

Appendix 1  
Summary of Dispensing Red Flag Analysis  
All Walgreens Stores

PLAINTIFF TRIAL  
EXHIBIT

**P-04744\_00001**

**Summary of Walgreens Dispensing Red Flag Analysis  
San Francisco County, CA  
Red Flag Computations - Nonrecurrent**

	<b>No of Prescriptions</b>
All Prescriptions	2,929,821
Opioid Prescriptions	2,478,103

<b>Red Flags Computation</b>	<b>Flagged</b>	<b>%</b>
Flagged for Any of the Red Flag Computation 1-14	1,800,940	61.5%
Red Flag Computation 1	181,027	7.3%
Red Flag Computation 2	236,340	9.5%
Red Flag Computation 3	296,264	12.0%
Red Flag Computation 4	206,511	8.3%
Red Flag Computation 5	98,953	3.4%
Red Flag Computation 6	13,412	0.5%
Red Flag Computation 7	857,235	29.3%
Red Flag Computation 8	243,360	8.3%
Red Flag Computation 9	63,261	2.6%
Red Flag Computation 11	160,622	6.5%
Red Flag Computation 12	80,793	3.3%
Red Flag Computation 14	15,792	0.6%
Red Flag Computation 15	604,409	24.4%
Red Flag Computation 16	229,954	9.3%

Notes:

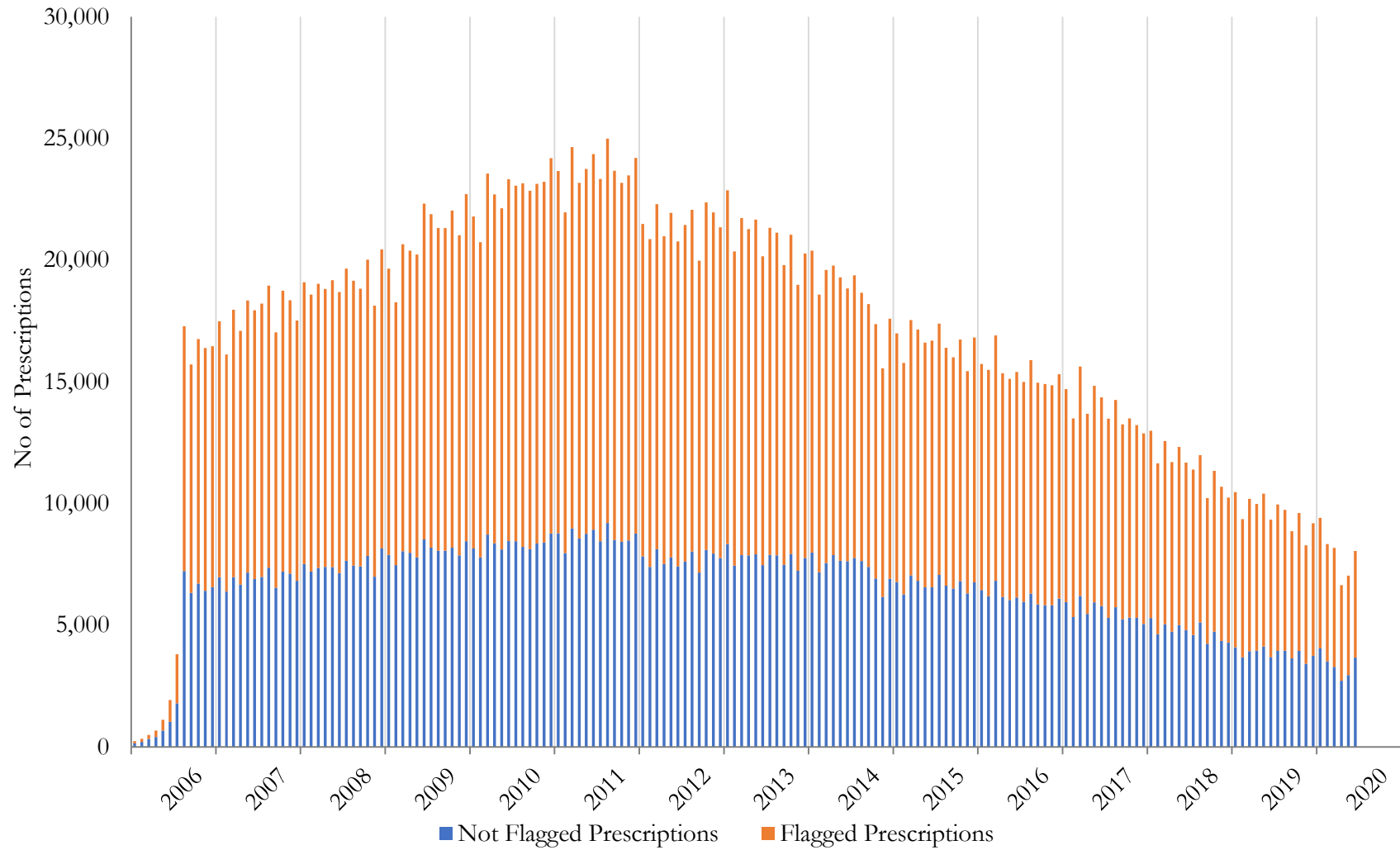
<sup>1</sup> **Defendant**

Walgreens

**Date Range**

January 2006 to June 2020

### Summary of Walgreens Dispensing Red Flag Analysis San Francisco County, CA Red Flag Computations - Nonrecurrent



Defendant  
Walgreens

Date Range  
January 2006 to June 2020

**Summary of Walgreens Dispensing Red Flag Analysis  
San Francisco County, CA  
Red Flag Computations - Recurrent**

	<b>No of Prescriptions</b>
All Prescriptions	2,929,821
Opioid Prescriptions	2,478,103

<b>Red Flags Computation</b>	<b>Flagged</b>	<b>%</b>
Flagged for Any of the Red Flag Computation 1-14	2,446,699	83.5%
Red Flag Computation 1	274,147	11.1%
Red Flag Computation 2	2,319,231	93.6%
Red Flag Computation 3	1,029,223	41.5%
Red Flag Computation 4	835,914	33.7%
Red Flag Computation 5	183,700	6.3%
Red Flag Computation 6	803,935	27.4%
Red Flag Computation 7	919,943	31.4%
Red Flag Computation 8	2,103,444	71.8%
Red Flag Computation 9	330,863	13.4%
Red Flag Computation 11	1,651,151	66.6%
Red Flag Computation 12	1,357,386	54.8%
Red Flag Computation 14	195,856	7.9%
Red Flag Computation 15	788,066	31.8%
Red Flag Computation 16	783,159	31.6%

Notes:

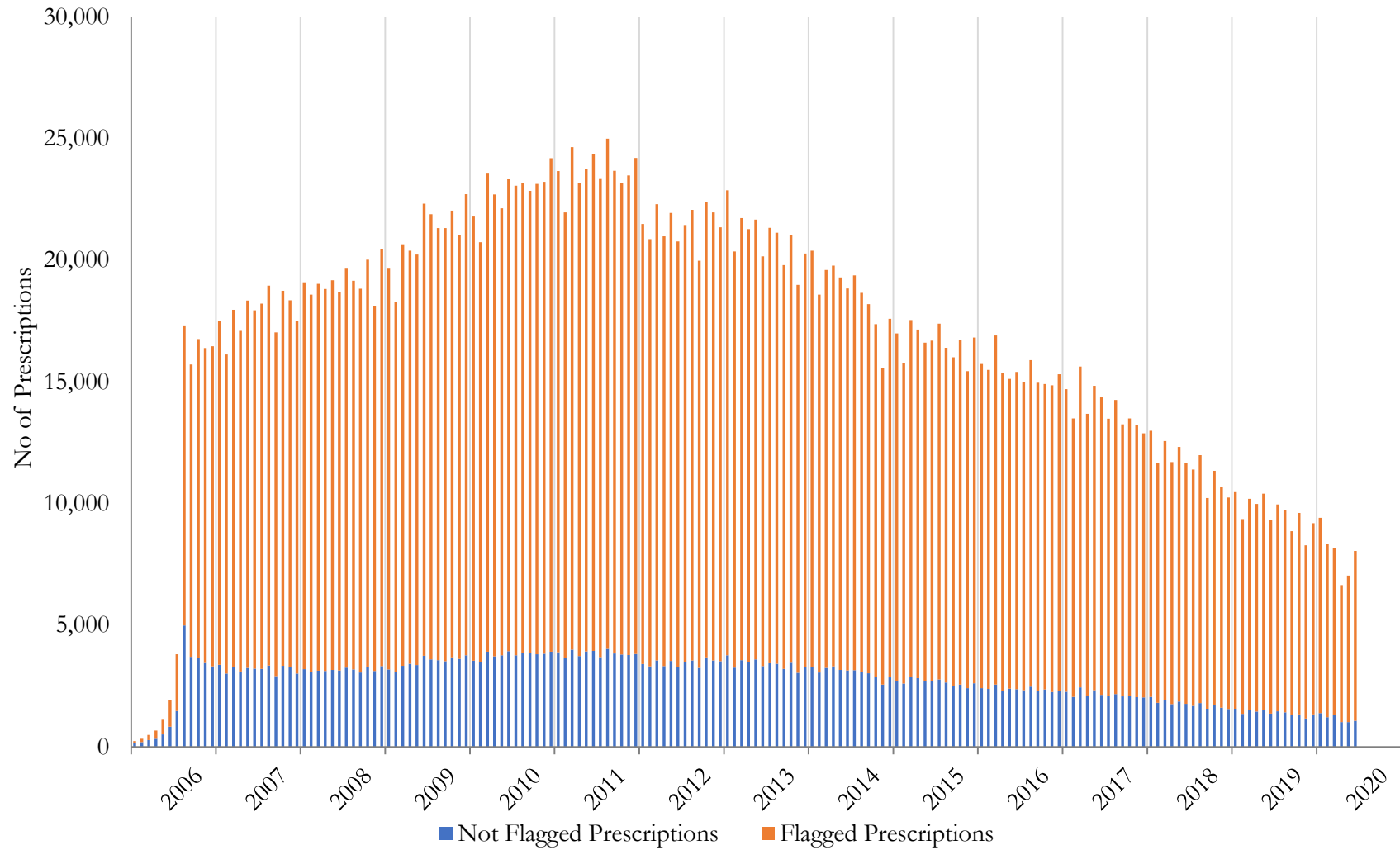
<sup>1</sup> **Defendant**

Walgreens

**Date Range**

January 2006 to June 2020

### Summary of Walgreens Dispensing Red Flag Analysis San Francisco County, CA Red Flag Computations - Recurrent



Defendant  
Walgreens

Date Range  
January 2006 to June 2020

**Summary of Walgreens Dispensing Red Flag Analysis - By Year**  
**San Francisco County, CA**  
 # of Prescriptions - Nonrecurrent

	Total	2006	2007	2008	2009	2010	2011	2012	2013	2014	2015	2016	2017	2018	2019	2020
<b>Total # of Prescriptions of Rx</b>	2,929,821	91,215	213,786	229,635	251,811	273,839	284,407	257,538	250,624	223,237	199,568	184,960	167,319	138,807	115,418	47,657
<b>Total # of Prescriptions of Opioid Rx</b>	2,478,103	77,260	180,670	194,543	212,331	230,318	239,767	217,328	210,989	187,900	168,725	157,527	142,345	118,425	99,132	40,843
<b>Red Flag Computation 1</b>	181,027 7.31%	6,531 8.45%	13,981 7.74%	12,044 6.19%	12,600 5.93%	14,444 6.27%	15,030 6.27%	13,786 6.34%	14,317 6.79%	13,301 7.08%	12,988 7.70%	13,762 8.74%	13,451 9.45%	11,411 9.64%	9,917 10.00%	3,464 8.48%
<b>Red Flag Computation 2</b>	236,340 9.54%	8,454 10.94%	18,734 10.37%	16,534 8.50%	17,291 8.14%	19,260 8.36%	20,358 8.49%	18,531 8.53%	18,937 8.98%	16,901 8.99%	16,286 9.65%	17,228 10.94%	17,186 12.07%	14,337 12.11%	12,017 12.12%	4,286 10.49%
<b>Red Flag Computation 3</b>	296,264 11.96%	7,220 9.35%	19,793 10.96%	22,784 11.71%	26,041 12.26%	30,653 13.31%	32,237 13.45%	29,482 13.57%	26,580 12.60%	22,971 12.23%	20,242 12.00%	18,393 11.68%	15,543 10.92%	11,919 10.06%	9,057 9.14%	3,349 8.20%
<b>Red Flag Computation 4</b>	206,511 8.33%	4,578 5.93%	13,717 7.59%	16,714 8.59%	20,515 9.66%	23,246 10.09%	23,438 9.78%	20,652 9.50%	21,384 10.14%	17,174 9.14%	13,773 8.16%	10,643 6.76%	8,622 6.06%	6,309 5.33%	4,291 4.33%	1,455 3.56%
<b>Red Flag Computation 5</b>	98,953 3.38%	2,727 2.99%	6,645 3.11%	7,252 3.16%	8,174 3.25%	9,722 3.55%	10,238 3.60%	9,625 3.74%	9,165 3.66%	7,691 3.45%	7,179 3.60%	6,187 3.35%	5,538 3.31%	4,574 3.30%	3,010 2.61%	1,226 2.57%
<b>Red Flag Computation 6</b>	13,412 0.46%	468 0.51%	960 0.45%	1,035 0.45%	1,223 0.49%	1,394 0.51%	1,452 0.51%	1,390 0.54%	1,436 0.57%	1,047 0.47%	930 0.47%	665 0.36%	630 0.38%	444 0.32%	245 0.21%	93 0.20%
<b>Red Flag Computation 7</b>	857,235 29.26%	26,308 28.84%	63,336 29.63%	68,045 29.63%	75,793 30.10%	84,742 30.95%	86,344 30.36%	77,151 29.96%	76,366 30.47%	66,139 29.63%	56,908 28.52%	51,118 27.64%	46,265 27.65%	37,226 26.82%	29,421 25.49%	12,073 25.33%
<b>Red Flag Computation 8</b>	243,360 8.31%	7,289 7.99%	16,631 7.78%	18,190 7.92%	20,449 8.12%	23,355 8.53%	23,680 8.33%	21,839 8.48%	21,994 8.78%	18,874 8.45%	16,507 8.27%	15,929 8.61%	14,796 8.84%	11,386 8.20%	8,783 7.61%	3,658 7.68%
<b>Red Flag Computation 9</b>	63,261 2.55%	1,375 1.78%	3,474 1.92%	3,463 1.78%	4,213 1.98%	4,565 1.98%	5,648 2.36%	5,755 2.65%	5,941 2.82%	5,325 2.83%	5,502 3.26%	5,372 3.41%	4,608 3.24%	3,711 3.13%	2,993 3.02%	1,316 3.22%
<b>Red Flag Computation 11</b>	160,622 6.48%	3,397 4.40%	8,480 4.69%	9,713 4.99%	12,740 6.00%	17,212 7.47%	15,855 6.61%	15,206 7.00%	13,238 6.27%	10,561 5.62%	9,601 5.69%	9,098 5.78%	7,943 5.58%	6,316 5.33%	15,208 15.34%	6,054 14.82%
<b>Red Flag Computation 12</b>	80,793 3.26%	2,177 2.82%	6,728 3.72%	7,540 3.88%	9,334 4.40%	10,898 4.73%	8,896 3.71%	6,850 3.15%	6,140 2.91%	4,957 2.64%	4,154 2.46%	3,952 2.51%	3,389 2.38%	2,719 2.30%	2,413 2.43%	646 1.58%
<b>Red Flag Computation 14</b>	15,792 0.64%	910 1.18%	1,950 1.08%	2,289 1.18%	2,444 1.15%	2,267 0.98%	2,118 0.88%	1,817 0.84%	1,306 0.62%	687 0.37%	0 0.00%	0 0.00%	2 0.00%	2 0.00%	0 0.00%	0 0.00%
<b>Red Flag Computation 15</b>	604,409 24.39%	13,445 17.40%	38,160 21.12%	44,918 23.09%	51,910 24.45%	61,881 26.87%	63,794 26.61%	60,357 27.77%	55,082 26.11%	44,631 23.75%	41,019 24.31%	38,676 24.55%	34,330 24.12%	26,861 22.68%	21,034 21.22%	8,311 20.35%
<b>Red Flag Computation 16</b>	229,954 9.28%	9,739 12.61%	23,303 12.90%	22,527 11.58%	22,174 10.44%	22,943 9.96%	23,197 9.67%	21,972 10.11%	19,194 9.10%	14,181 7.55%	11,723 6.95%	10,506 6.67%	9,346 6.57%	8,636 7.29%	7,506 7.57%	3,007 7.36%
<b>Flagged for Any of the Red Flag Computation</b>	1,800,940 61.47%	53,374 58.51%	130,671 61.12%	140,108 61.01%	155,278 61.66%	173,886 63.50%	180,570 63.49%	164,854 64.01%	157,523 62.85%	134,550 60.27%	119,449 59.85%	111,307 60.18%	100,681 60.17%	81,939 59.03%	69,287 60.03%	27,463 57.63%

**Notes**  
 Defendant Date Range  
 Walgreens 1/2006 - 6/2020

**Summary of Walgreens Dispensing Red Flag Analysis - By Year**  
**San Francisco County, CA**

Dosage Units - Nonrecurrent

	Total	2006	2007	2008	2009	2010	2011	2012	2013	2014	2015	2016	2017	2018	2019	2020
<b>Total Dosage Units of Rx</b>	178,543,614	5,066,995	11,746,243	13,087,239	14,805,210	16,932,266	17,736,727	16,513,865	15,827,000	13,913,414	12,879,606	11,752,943	10,439,762	8,410,080	6,633,691	2,798,573
<b>Total Dosage Units of Opioid Rx</b>	155,763,131	4,374,538	10,146,416	11,344,092	12,827,071	14,705,471	15,467,823	14,450,471	13,793,950	12,115,575	11,313,749	10,367,883	9,192,814	7,371,633	5,834,356	2,457,289
<b>Red Flag Computation 1</b>	10,231,671 6.57%	347,279 7.94%	708,152 6.98%	634,329 5.59%	691,836 5.39%	832,578 5.66%	868,693 5.62%	847,814 5.87%	864,614 6.27%	764,947 6.31%	800,912 7.08%	834,013 8.04%	800,690 8.71%	613,549 8.32%	466,926 8.00%	155,339 6.32%
<b>Red Flag Computation 2</b>	13,230,212 8.49%	456,772 10.44%	996,611 9.82%	889,894 7.84%	974,134 7.59%	1,105,315 7.52%	1,186,996 7.67%	1,114,507 7.71%	1,092,924 7.92%	951,638 7.85%	986,262 8.72%	1,027,574 9.91%	968,865 10.54%	729,766 9.90%	558,017 9.56%	190,937 7.77%
<b>Red Flag Computation 3</b>	23,975,364 15.39%	560,881 12.82%	1,528,474 15.06%	1,736,688 15.31%	2,032,184 15.84%	2,468,742 16.79%	2,695,636 17.43%	2,475,562 17.13%	2,241,073 16.25%	1,901,786 15.70%	1,677,490 14.83%	1,526,119 14.72%	1,245,263 13.55%	949,406 12.88%	689,394 11.82%	246,666 10.04%
<b>Red Flag Computation 4</b>	17,354,303 11.14%	339,835 7.77%	999,899 9.85%	1,270,356 11.20%	1,678,923 13.09%	1,995,053 13.57%	2,002,921 12.95%	1,851,137 12.81%	1,965,404 14.25%	1,498,404 12.37%	1,180,969 10.44%	901,198 8.69%	704,380 7.66%	516,705 7.01%	339,977 5.83%	109,142 4.44%
<b>Red Flag Computation 5</b>	7,714,069 4.32%	190,564 3.76%	476,602 4.06%	545,000 4.16%	641,833 4.34%	796,460 4.70%	823,417 4.64%	772,773 4.68%	705,655 4.46%	590,986 4.25%	594,753 4.62%	490,567 4.17%	430,864 4.13%	350,586 4.17%	220,114 3.32%	83,895 3.00%
<b>Red Flag Computation 6</b>	1,103,955 0.62%	34,580 0.68%	74,310 0.63%	87,632 0.67%	108,304 0.73%	134,553 0.79%	117,150 0.66%	121,675 0.74%	112,907 0.71%	83,580 0.60%	78,534 0.61%	52,031 0.44%	48,501 0.46%	31,537 0.37%	13,452 0.20%	5,209 0.19%
<b>Red Flag Computation 7</b>	57,002,404 31.93%	1,648,056 32.53%	3,949,025 33.62%	4,397,800 33.60%	5,000,957 33.78%	5,828,933 34.43%	5,887,123 33.19%	5,351,694 32.41%	5,180,760 32.73%	4,393,572 31.58%	3,924,158 30.47%	3,470,863 29.53%	3,026,274 28.99%	2,411,511 28.67%	1,803,570 27.19%	728,108 26.02%
<b>Red Flag Computation 8</b>	15,073,107 8.44%	440,766 8.70%	954,476 8.13%	1,101,771 8.42%	1,307,042 8.83%	1,591,538 9.40%	1,526,281 8.61%	1,456,004 8.82%	1,396,584 8.82%	1,151,081 8.27%	1,051,095 8.16%	974,140 8.29%	869,956 8.33%	642,623 7.64%	439,460 6.62%	170,290 6.08%
<b>Red Flag Computation 9</b>	5,565,045 3.57%	77,312 1.77%	232,731 2.29%	263,662 2.32%	317,665 2.48%	379,986 2.58%	509,005 3.29%	552,198 3.82%	582,204 4.22%	487,309 4.02%	526,767 4.66%	519,156 5.01%	425,177 4.63%	337,836 4.58%	249,010 4.27%	105,027 4.27%
<b>Red Flag Computation 11</b>	24,807,008 15.93%	573,698 13.11%	1,343,383 13.24%	1,574,947 13.88%	2,047,579 15.96%	2,702,521 18.38%	2,612,767 16.89%	2,589,717 17.92%	2,164,147 15.69%	1,702,800 14.05%	1,579,995 13.97%	1,460,161 14.08%	1,215,831 13.23%	985,866 13.37%	1,608,292 27.57%	645,304 26.26%
<b>Red Flag Computation 12</b>	4,018,869 2.58%	65,623 1.50%	207,649 2.05%	255,892 2.26%	486,816 3.80%	830,812 5.65%	421,324 2.72%	341,739 2.36%	312,317 2.26%	239,226 1.97%	197,122 1.74%	187,059 1.80%	173,397 1.89%	146,153 1.98%	121,160 2.08%	32,580 1.33%
<b>Red Flag Computation 14</b>	1,734,505 1.11%	95,213 2.18%	202,691 2.00%	257,574 2.27%	263,309 2.05%	261,512 1.78%	237,886 1.54%	202,790 1.40%	140,660 1.02%	72,430 0.60%	0 0.00%	0 0.00%	140 0.00%	300 0.00%	0 0.00%	0 0.00%
<b>Red Flag Computation 15</b>	61,520,261 39.50%	1,404,906 32.12%	3,832,650 37.77%	4,527,088 39.91%	5,313,409 41.42%	6,484,128 44.09%	6,702,130 43.33%	6,332,914 43.82%	5,677,102 41.16%	4,543,111 37.50%	4,190,839 37.04%	3,842,511 37.06%	3,361,103 36.56%	2,592,146 35.16%	1,953,346 33.48%	762,878 31.05%
<b>Red Flag Computation 16</b>	8,837,651 5.67%	385,103 8.80%	891,020 8.78%	837,366 7.38%	795,025 6.20%	852,697 5.80%	893,237 5.77%	848,231 5.87%	764,339 5.54%	519,439 4.29%	440,987 3.90%	394,716 3.81%	400,419 4.36%	373,218 5.06%	311,166 5.33%	130,688 5.32%
<b>Flagged for Any of the Red Flag Computation</b>	123,697,136 69.28%	3,337,474 65.87%	8,127,489 69.19%	9,095,449 69.50%	10,420,904 70.39%	12,216,065 72.15%	12,725,262 71.75%	11,866,088 71.86%	11,150,451 70.45%	9,410,799 67.64%	8,643,000 67.11%	7,911,916 67.32%	6,986,879 66.93%	5,522,220 65.66%	4,479,776 67.53%	1,803,364 64.44%

**Notes**  
 Defendant: Walgreens  
 Date Range: 1/2006 - 6/2020

**Summary of Walgreens Dispensing Red Flag Analysis - By Year**  
**San Francisco County, CA**

MME - Nonrecurrent

	Total	2006	2007	2008	2009	2010	2011	2012	2013	2014	2015	2016	2017	2018	2019	2020
<b>Total MME of Rx</b>	3,185,161,323	81,244,875	197,298,847	220,676,108	268,283,402	333,017,986	324,708,577	310,126,410	283,319,643	237,063,319	225,125,286	209,731,536	185,355,168	146,401,658	115,119,726	47,688,782
<b>Total MME of Opioid Rx</b>	3,185,161,323	81,244,875	197,298,847	220,676,108	268,283,402	333,017,986	324,708,577	310,126,410	283,319,643	237,063,319	225,125,286	209,731,536	185,355,168	146,401,658	115,119,726	47,688,782
<b>Red Flag Computation 1</b>	213,114,610 6.69%	7,289,568 8.97%	14,627,835 7.41%	13,638,382 6.18%	15,775,009 5.88%	20,794,602 6.24%	18,313,667 5.64%	18,304,398 5.90%	17,639,085 6.23%	14,269,181 6.02%	15,667,655 6.96%	17,001,484 8.11%	16,324,934 8.81%	11,891,511 8.12%	8,594,711 7.47%	2,982,588 6.25%
<b>Red Flag Computation 2</b>	276,611,790 8.68%	9,383,745 11.55%	21,180,048 10.74%	19,153,719 8.68%	22,202,269 8.28%	26,825,574 8.06%	25,092,274 7.73%	24,086,065 7.77%	22,481,236 7.93%	17,971,973 7.58%	19,850,154 8.82%	21,336,420 10.17%	19,813,373 10.69%	13,852,905 9.46%	9,866,033 8.57%	3,516,001 7.37%
<b>Red Flag Computation 3</b>	660,459,367 20.74%	18,329,796 22.56%	48,632,910 24.65%	50,778,010 23.01%	59,806,351 22.29%	72,995,137 21.92%	76,722,186 23.63%	69,369,064 22.37%	60,287,452 21.28%	48,631,821 20.51%	42,042,022 18.67%	38,364,057 18.29%	30,192,174 16.29%	22,349,856 15.27%	16,407,275 14.25%	5,551,257 11.64%
<b>Red Flag Computation 4</b>	508,592,243 15.97%	10,400,472 12.80%	29,324,332 14.86%	36,031,044 16.33%	51,674,884 19.26%	65,274,456 19.60%	58,958,353 18.16%	55,220,542 17.81%	60,349,464 21.30%	44,618,000 18.82%	31,951,274 14.19%	23,616,608 11.26%	16,992,259 9.17%	13,010,473 8.89%	8,687,998 7.55%	2,482,085 5.20%
<b>Red Flag Computation 5</b>	119,149,443 3.74%	2,480,816 3.05%	6,906,468 3.50%	9,388,005 4.25%	11,194,956 4.17%	15,163,106 4.55%	14,078,345 4.34%	14,135,211 4.56%	11,331,960 4.00%	8,034,495 3.39%	8,167,493 3.63%	6,316,620 3.01%	4,980,295 2.69%	4,178,600 2.85%	2,164,557 1.88%	628,518 1.32%
<b>Red Flag Computation 6</b>	16,524,973 0.52%	410,482 0.51%	919,969 0.47%	1,399,105 0.63%	1,695,473 0.63%	3,082,813 0.93%	1,535,160 0.47%	2,217,243 0.71%	1,662,686 0.59%	929,213 0.39%	1,120,675 0.50%	545,045 0.26%	533,508 0.29%	335,899 0.23%	91,649 0.08%	46,056 0.10%
<b>Red Flag Computation 7</b>	1,010,358,021 31.72%	25,171,152 30.98%	65,308,304 33.10%	75,324,385 34.13%	94,707,662 35.30%	120,680,098 36.24%	108,052,088 33.28%	99,408,105 32.05%	90,710,355 32.02%	71,788,337 30.28%	66,107,772 29.36%	59,169,999 28.21%	51,463,708 27.76%	40,779,102 27.85%	29,897,883 25.97%	11,789,073 24.72%
<b>Red Flag Computation 8</b>	275,389,356 8.65%	6,884,687 8.47%	14,866,025 7.53%	17,115,181 7.76%	25,172,383 9.38%	37,650,482 11.31%	28,162,638 8.67%	29,161,329 9.40%	24,481,520 8.64%	19,065,322 8.04%	18,379,048 8.16%	17,300,517 8.25%	15,654,725 8.45%	11,240,472 7.68%	7,407,516 6.43%	2,847,511 5.97%
<b>Red Flag Computation 9</b>	114,089,668 3.58%	1,053,237 1.30%	2,961,199 1.50%	3,735,493 1.69%	4,979,911 1.86%	7,081,647 2.13%	10,120,658 3.12%	12,307,372 3.97%	13,574,028 4.79%	10,426,668 4.40%	11,185,031 4.97%	11,678,930 5.57%	9,298,546 5.02%	7,536,354 5.15%	5,748,977 4.99%	2,401,619 5.04%
<b>Red Flag Computation 11</b>	1,456,278,561 45.72%	38,645,039 47.57%	93,387,186 47.33%	104,214,216 47.22%	136,469,601 50.87%	180,300,949 54.14%	155,848,713 48.00%	146,332,517 47.18%	122,193,343 43.13%	94,869,625 40.02%	86,684,453 38.50%	79,492,355 37.90%	67,967,063 36.67%	52,619,840 35.94%	69,429,685 60.31%	27,823,978 58.34%
<b>Red Flag Computation 12</b>	88,069,611 2.76%	490,984 0.60%	1,781,407 0.90%	2,879,368 1.30%	16,601,384 6.19%	37,034,250 11.12%	5,722,859 1.76%	5,415,929 1.75%	4,233,366 1.49%	3,227,992 1.36%	2,370,260 1.05%	2,305,723 1.10%	2,122,672 1.15%	1,970,323 1.35%	1,505,173 1.31%	407,923 0.86%
<b>Red Flag Computation 14</b>	13,627,111 0.43%	701,283 0.86%	1,537,921 0.78%	2,019,960 0.92%	2,053,723 0.77%	2,042,986 0.61%	1,889,615 0.58%	1,630,870 0.53%	1,138,489 0.40%	592,465 0.25%	0 0.00%	0 0.00%	6,300 0.00%	13,500 0.01%	0 0.00%	0 0.00%
<b>Red Flag Computation 15</b>	2,005,818,076 62.97%	45,715,326 56.27%	125,298,462 63.51%	141,645,841 64.19%	177,502,816 66.16%	227,359,153 68.27%	218,685,099 67.35%	207,983,805 67.06%	181,708,392 64.14%	144,765,403 61.07%	135,713,970 60.28%	124,158,914 59.20%	107,512,631 58.00%	81,163,492 55.44%	62,465,971 54.26%	24,138,802 50.62%
<b>Red Flag Computation 16</b>	128,570,252 4.04%	4,847,006 5.97%	11,206,752 5.68%	9,976,622 4.52%	10,239,685 3.82%	12,863,137 3.86%	12,687,303 3.91%	12,810,435 4.13%	12,236,005 4.32%	7,675,155 3.24%	6,650,730 2.95%	6,158,259 2.94%	6,969,842 3.76%	6,456,869 4.41%	5,506,763 4.78%	2,285,691 4.79%
<b>Flagged for Any of the Red Flag Computation</b>	2,713,945,163 85.21%	67,907,386 83.58%	169,244,647 85.78%	190,091,764 86.14%	234,040,386 87.24%	295,135,255 88.62%	283,146,821 87.20%	270,445,413 87.20%	242,890,762 85.73%	197,527,491 83.32%	185,729,723 82.50%	172,526,343 82.26%	151,066,278 81.50%	117,487,167 80.25%	97,431,916 84.64%	39,273,812 82.35%

**Notes**  
 Defendant: Walgreens  
 Date Range: 1/2006 - 6/2020



**Summary of Walgreens Dispensing Red Flag Analysis - By Year**  
**San Francisco County, CA**  
 # of Prescriptions - Recurrent

	Total	2006	2007	2008	2009	2010	2011	2012	2013	2014	2015	2016	2017	2018	2019	2020
<b>Total # of Prescriptions of Rx</b>	2,929,821	91,215	213,786	229,635	251,811	273,839	284,407	257,538	250,624	223,237	199,568	184,960	167,319	138,807	115,418	47,657
<b>Total # of Prescriptions of Opioid Rx</b>	2,478,103	77,260	180,670	194,543	212,331	230,318	239,767	217,328	210,989	187,900	168,725	157,527	142,345	118,425	99,132	40,843
<b>Red Flag Computation 1</b>	274,147 11.06%	6,803 8.81%	15,371 8.51%	15,082 7.75%	17,490 8.24%	21,490 9.33%	23,670 9.87%	22,416 10.31%	23,631 11.20%	22,180 11.80%	21,920 12.99%	22,175 14.08%	21,323 14.98%	18,548 15.66%	15,996 16.14%	6,052 14.82%
<b>Red Flag Computation 2</b>	2,319,231 93.59%	52,853 68.41%	158,389 87.67%	178,432 91.72%	197,937 93.22%	217,725 94.53%	228,431 95.27%	207,019 95.26%	202,162 95.82%	179,104 95.32%	161,658 95.81%	151,344 96.07%	137,026 96.26%	113,475 95.82%	94,920 95.75%	38,756 94.89%
<b>Red Flag Computation 3</b>	1,029,223 41.53%	10,993 14.23%	45,067 24.94%	62,739 32.25%	75,902 35.75%	91,644 39.79%	102,988 42.95%	99,088 45.59%	97,178 46.06%	86,577 46.08%	80,499 47.71%	76,121 48.32%	70,486 49.52%	58,800 49.65%	49,547 49.98%	21,594 52.87%
<b>Red Flag Computation 4</b>	835,914 33.73%	7,265 9.40%	33,786 18.70%	49,696 25.54%	63,167 29.75%	75,602 32.83%	83,142 34.68%	79,088 36.39%	79,153 37.52%	71,642 38.13%	67,357 39.92%	62,759 39.84%	57,587 40.46%	48,489 40.94%	39,870 40.22%	17,311 42.38%
<b>Red Flag Computation 5</b>	183,700 6.27%	1,681 1.84%	6,702 3.13%	9,608 4.18%	12,247 4.86%	15,047 5.49%	17,078 6.00%	16,810 6.53%	17,340 6.92%	16,241 7.28%	15,251 7.64%	14,698 7.95%	13,768 8.23%	12,464 8.98%	10,253 8.88%	4,512 9.47%
<b>Red Flag Computation 6</b>	803,935 27.44%	6,359 6.97%	26,934 12.60%	43,434 18.91%	58,780 23.34%	73,364 26.79%	81,744 28.74%	81,192 31.53%	80,660 32.18%	70,007 31.36%	66,212 33.18%	61,314 33.15%	56,013 33.48%	45,830 33.02%	36,987 32.05%	15,105 31.70%
<b>Red Flag Computation 7</b>	919,943 31.40%	17,234 18.89%	50,856 23.79%	62,276 27.12%	72,926 28.96%	84,172 30.74%	90,087 31.68%	83,319 32.35%	84,203 33.60%	74,975 33.59%	67,837 33.99%	63,532 34.35%	58,714 35.09%	49,937 35.98%	41,918 36.32%	17,957 37.68%
<b>Red Flag Computation 8</b>	2,103,444 71.79%	38,491 42.20%	131,145 61.34%	157,879 68.75%	179,073 71.11%	200,262 73.13%	209,940 73.82%	194,021 75.34%	189,041 75.43%	165,602 74.18%	149,381 74.85%	138,548 74.91%	124,844 74.61%	103,355 74.46%	86,619 75.05%	35,243 73.95%
<b>Red Flag Computation 9</b>	330,863 13.35%	2,885 3.73%	12,193 6.75%	16,998 8.74%	21,691 10.22%	25,959 11.27%	30,436 12.69%	31,535 14.51%	32,499 15.40%	29,257 15.57%	27,985 16.59%	26,660 16.92%	25,046 17.60%	21,612 18.25%	18,182 18.34%	7,925 19.40%
<b>Red Flag Computation 11</b>	1,651,151 66.63%	23,534 30.46%	85,398 47.27%	108,548 55.80%	129,491 60.99%	155,184 67.38%	169,417 70.66%	158,722 73.03%	153,743 72.87%	134,047 71.34%	121,220 71.84%	111,838 71.00%	101,906 71.59%	84,935 71.72%	78,866 79.56%	34,302 83.99%
<b>Red Flag Computation 12</b>	1,357,386 54.78%	14,558 18.84%	64,363 35.62%	89,399 45.95%	109,854 51.74%	130,000 56.44%	143,419 59.82%	133,848 61.59%	130,423 61.82%	113,715 60.52%	101,661 60.25%	94,016 59.68%	83,629 58.75%	69,061 58.32%	56,816 57.31%	22,624 55.39%
<b>Red Flag Computation 14</b>	195,856 7.90%	2,010 2.60%	7,818 4.33%	13,303 6.84%	17,040 8.03%	19,589 8.51%	21,001 8.76%	20,410 9.39%	20,395 9.67%	17,842 9.50%	14,484 8.58%	12,358 7.85%	10,993 7.72%	8,731 7.37%	6,933 6.99%	2,949 7.22%
<b>Red Flag Computation 15</b>	788,066 31.80%	13,449 17.41%	40,540 22.44%	51,135 26.28%	60,904 28.68%	73,509 31.92%	78,248 32.64%	75,909 34.93%	72,930 34.57%	62,272 33.14%	58,545 34.70%	55,764 35.40%	51,192 35.96%	42,597 35.97%	35,624 35.94%	15,448 37.82%
<b>Red Flag Computation 16</b>	783,159 31.60%	13,127 16.99%	42,459 23.50%	54,297 27.91%	62,833 29.59%	71,615 31.09%	77,780 32.44%	74,880 34.45%	71,534 33.90%	62,328 33.17%	56,704 33.61%	52,733 33.48%	48,057 33.76%	42,789 36.13%	36,260 36.58%	15,763 38.59%
<b>Flagged for Any of the Red Flag Computation</b>	2,446,699 83.51%	68,301 74.88%	175,432 82.06%	191,542 83.41%	209,937 83.37%	228,438 83.42%	238,296 83.79%	216,108 83.91%	209,770 83.70%	186,473 83.53%	167,578 83.97%	156,535 84.63%	141,450 84.54%	117,661 84.77%	98,566 85.40%	40,612 85.22%

**Notes**  
 Defendant Date Range  
 Walgreens 1/2006 - 6/2020

**Summary of Walgreens Dispensing Red Flag Analysis - By Year**  
**San Francisco County, CA**  
 Dosage Units - Recurrent

	Total	2006	2007	2008	2009	2010	2011	2012	2013	2014	2015	2016	2017	2018	2019	2020
<b>Total Dosage Units of Rx</b>	178,543,614	5,066,995	11,746,243	13,087,239	14,805,210	16,932,266	17,736,727	16,513,865	15,827,000	13,913,414	12,879,606	11,752,943	10,439,762	8,410,080	6,633,691	2,798,573
<b>Total Dosage Units of Opioid Rx</b>	155,763,131	4,374,538	10,146,416	11,344,092	12,827,071	14,705,471	15,467,823	14,450,471	13,793,950	12,115,575	11,313,749	10,367,883	9,192,814	7,371,633	5,834,356	2,457,289
<b>Red Flag Computation 1</b>	17,736,388 11.39%	360,222 8.23%	798,257 7.87%	842,166 7.42%	1,020,004 7.95%	1,350,990 9.19%	1,561,296 10.09%	1,552,989 10.75%	1,623,895 11.77%	1,511,882 12.48%	1,574,502 13.92%	1,565,380 15.10%	1,467,996 15.97%	1,203,696 16.33%	947,050 16.23%	356,063 14.49%
<b>Red Flag Computation 2</b>	146,456,768 94.03%	3,031,184 69.29%	8,897,734 87.69%	10,444,752 92.07%	11,977,363 93.38%	13,945,914 94.83%	14,775,687 95.53%	13,816,238 95.61%	13,269,209 96.20%	11,591,907 95.68%	10,870,179 96.08%	9,975,293 96.21%	8,860,774 96.39%	7,077,141 96.01%	5,593,031 95.86%	2,330,362 94.83%
<b>Red Flag Computation 3</b>	90,626,032 58.18%	879,602 20.11%	3,793,912 37.39%	5,341,707 47.09%	6,501,532 50.69%	8,022,636 54.56%	9,186,628 59.39%	8,978,520 62.13%	8,717,681 63.20%	7,691,256 63.48%	7,333,684 64.82%	6,846,497 66.04%	6,232,217 67.79%	5,116,503 69.41%	4,176,037 71.58%	1,807,620 73.56%
<b>Red Flag Computation 4</b>	75,274,944 48.33%	549,757 12.57%	2,690,622 26.52%	4,092,484 36.08%	5,474,706 42.68%	6,867,179 46.70%	7,628,713 49.32%	7,365,010 50.97%	7,286,882 52.83%	6,539,727 53.98%	6,322,783 55.89%	5,847,015 56.40%	5,280,545 57.44%	4,369,162 59.27%	3,466,892 59.42%	1,493,467 60.78%
<b>Red Flag Computation 5</b>	16,622,758 9.31%	136,505 2.69%	551,596 4.70%	813,736 6.22%	1,066,770 7.21%	1,383,074 8.17%	1,585,747 8.94%	1,570,540 9.51%	1,598,867 10.10%	1,466,556 10.54%	1,467,366 11.39%	1,404,069 11.95%	1,265,436 12.12%	1,088,063 12.94%	857,463 12.93%	366,970 13.11%
<b>Red Flag Computation 6</b>	68,981,280 38.64%	543,819 10.73%	2,238,899 19.06%	3,703,744 28.30%	5,095,311 34.42%	6,558,970 38.74%	7,118,928 40.14%	7,121,804 43.13%	6,879,738 43.47%	5,884,053 42.29%	5,813,610 45.14%	5,322,323 45.29%	4,749,528 45.49%	3,823,974 45.47%	2,933,374 44.22%	1,193,205 42.64%
<b>Red Flag Computation 7</b>	73,153,613 40.97%	1,240,041 24.47%	3,705,383 31.55%	4,661,723 35.62%	5,595,050 37.79%	6,707,650 39.61%	7,214,932 40.68%	6,893,401 41.74%	6,834,977 43.19%	6,050,770 43.49%	5,749,401 44.64%	5,284,978 44.97%	4,762,793 45.62%	3,943,505 46.89%	3,158,787 47.62%	1,350,222 48.25%
<b>Red Flag Computation 8</b>	140,802,924 78.86%	2,555,983 50.44%	8,164,443 69.51%	9,927,103 75.85%	11,555,927 78.05%	13,516,456 79.83%	14,261,057 80.40%	13,544,836 82.02%	12,939,977 81.76%	11,213,979 80.60%	10,523,204 81.70%	9,603,449 81.71%	8,524,476 81.65%	6,828,835 81.20%	5,410,642 81.56%	2,232,557 79.77%
<b>Red Flag Computation 9</b>	30,471,450 19.56%	185,376 4.24%	902,001 8.89%	1,399,094 12.33%	1,833,988 14.30%	2,330,698 15.85%	2,867,446 18.54%	3,024,411 20.93%	3,138,855 22.76%	2,802,711 23.13%	2,728,348 24.12%	2,553,230 24.63%	2,345,092 25.51%	2,008,300 27.24%	1,650,076 28.28%	701,824 28.56%
<b>Red Flag Computation 11</b>	127,040,175 81.56%	2,019,285 46.16%	6,648,835 65.53%	8,289,048 73.07%	9,937,345 77.47%	12,113,875 82.38%	13,066,893 84.48%	12,484,220 86.39%	11,895,277 86.24%	10,313,101 85.12%	9,666,024 85.44%	8,827,582 85.14%	7,850,404 85.40%	6,329,320 85.86%	5,307,628 90.97%	2,291,338 93.25%
<b>Red Flag Computation 12</b>	88,669,162 56.93%	691,539 15.81%	3,324,730 32.77%	5,037,341 44.40%	6,650,150 51.84%	8,549,612 58.14%	9,403,899 60.80%	9,214,954 63.77%	8,894,653 64.48%	7,720,538 63.72%	7,200,172 63.64%	6,548,190 63.16%	5,749,765 62.55%	4,632,833 62.85%	3,586,307 61.47%	1,464,479 59.60%
<b>Red Flag Computation 14</b>	19,279,774 12.38%	200,097 4.57%	737,079 7.26%	1,241,924 10.95%	1,593,001 12.42%	1,931,499 13.13%	2,101,001 13.58%	2,027,089 14.03%	2,015,915 14.61%	1,759,059 14.52%	1,493,533 13.20%	1,250,994 12.07%	1,104,841 12.02%	872,149 11.83%	671,340 11.51%	280,253 11.40%
<b>Red Flag Computation 15</b>	79,882,269 51.28%	1,405,026 32.12%	4,063,629 40.05%	5,135,177 45.27%	6,163,215 48.05%	7,615,923 51.79%	8,124,189 52.52%	7,894,725 54.63%	7,478,901 54.22%	6,349,997 52.41%	6,014,458 53.16%	5,622,727 54.23%	5,053,711 54.97%	4,150,128 56.30%	3,371,214 57.78%	1,439,249 58.57%
<b>Red Flag Computation 16</b>	57,200,247 36.72%	665,353 15.21%	2,429,560 23.95%	3,463,918 30.53%	4,241,503 33.07%	5,189,701 35.29%	5,792,611 37.45%	5,670,716 39.24%	5,390,457 39.08%	4,691,669 38.72%	4,517,023 39.93%	4,147,001 40.00%	3,797,210 41.31%	3,321,701 45.06%	2,699,771 46.27%	1,182,053 48.10%
<b>Flagged for Any of the Red Flag Computation</b>	154,677,582 86.63%	3,997,479 78.89%	9,971,330 84.89%	11,242,147 85.90%	12,744,653 86.08%	14,644,091 86.49%	15,422,673 86.95%	14,414,473 87.29%	13,756,027 86.91%	12,071,791 86.76%	11,277,312 87.56%	10,339,060 87.97%	9,169,326 87.83%	7,352,748 87.43%	5,822,249 87.77%	2,452,223 87.62%

**Notes**  
 Defendant Date Range  
 Walgreens 1/2006 - 6/2020

**Summary of Walgreens Dispensing Red Flag Analysis - By Year**  
**San Francisco County, CA**

MME - Recurrent

	Total	2006	2007	2008	2009	2010	2011	2012	2013	2014	2015	2016	2017	2018	2019	2020
<b>Total MME of Rx</b>	3,185,161,323	81,244,875	197,298,847	220,676,108	268,283,402	333,017,986	324,708,577	310,126,410	283,319,643	237,063,319	225,125,286	209,731,536	185,355,168	146,401,658	115,119,726	47,688,782
<b>Total MME of Opioid Rx</b>	3,185,161,323	81,244,875	197,298,847	220,676,108	268,283,402	333,017,986	324,708,577	310,126,410	283,319,643	237,063,319	225,125,286	209,731,536	185,355,168	146,401,658	115,119,726	47,688,782
<b>Red Flag Computation 1</b>	396,591,963 12.45%	7,436,070 9.15%	16,064,235 8.14%	18,189,703 8.24%	22,582,092 8.42%	33,252,383 9.99%	35,391,555 10.90%	35,823,249 11.55%	36,502,517 12.88%	32,332,228 13.64%	36,215,075 16.09%	36,527,640 17.42%	34,178,061 18.44%	25,623,659 17.50%	19,306,415 16.77%	7,167,081 15.03%
<b>Red Flag Computation 2</b>	3,011,228,102 94.54%	59,173,226 72.83%	173,068,244 87.72%	204,223,913 92.54%	251,768,356 93.84%	317,719,085 95.41%	310,657,978 95.67%	297,790,824 96.02%	273,913,408 96.68%	228,406,377 96.35%	217,203,081 96.48%	202,297,035 96.46%	178,536,565 96.32%	140,832,591 96.20%	110,668,385 96.13%	44,969,033 94.30%
<b>Red Flag Computation 3</b>	2,330,336,334 73.16%	27,010,222 33.25%	110,917,080 56.22%	144,459,184 65.46%	178,386,974 66.49%	223,444,733 67.10%	245,965,705 75.75%	239,210,943 77.13%	222,553,717 78.55%	187,221,074 78.98%	178,358,067 79.23%	167,637,473 79.93%	150,302,810 81.09%	119,703,874 81.76%	95,219,584 82.71%	39,944,895 83.76%
<b>Red Flag Computation 4</b>	2,061,271,006 64.71%	15,908,161 19.58%	76,638,844 38.84%	113,852,273 51.59%	160,380,696 59.78%	210,286,795 63.15%	215,580,400 66.39%	209,447,216 67.54%	200,435,981 70.75%	173,021,503 72.99%	166,008,970 73.74%	154,433,228 73.63%	136,663,311 73.73%	108,960,383 74.43%	84,492,101 73.39%	35,161,145 73.73%
<b>Red Flag Computation 5</b>	424,198,116 13.32%	3,249,505 4.00%	13,276,449 6.73%	20,093,417 9.11%	27,953,137 10.42%	40,551,945 12.18%	43,256,690 13.32%	43,772,713 14.11%	41,798,207 14.75%	36,669,240 15.47%	37,113,161 16.49%	35,596,233 16.97%	30,203,215 16.29%	24,432,765 16.69%	18,500,464 16.07%	7,730,974 16.21%
<b>Red Flag Computation 6</b>	1,649,859,267 51.80%	15,461,268 19.03%	58,115,713 29.46%	92,759,417 42.03%	133,823,491 49.88%	183,214,437 55.02%	171,963,374 52.96%	175,547,861 56.61%	161,646,922 57.05%	130,545,918 55.07%	132,295,163 58.77%	120,915,716 57.65%	104,884,048 56.59%	82,208,638 56.15%	62,099,310 53.94%	24,377,991 51.12%
<b>Red Flag Computation 7</b>	1,759,557,485 55.24%	27,544,397 33.90%	87,889,481 44.55%	110,308,282 49.99%	142,664,100 53.18%	181,980,026 54.65%	177,410,796 54.64%	170,763,656 55.06%	162,700,219 57.43%	139,261,654 58.74%	134,393,724 59.70%	125,365,048 59.77%	111,291,620 60.04%	89,137,659 60.89%	69,916,201 60.73%	28,930,622 60.67%
<b>Red Flag Computation 8</b>	2,992,085,045 93.94%	54,891,663 67.56%	169,519,909 85.92%	201,963,512 91.52%	253,143,467 94.36%	317,860,201 95.45%	309,964,856 95.46%	298,951,153 96.40%	273,476,033 96.53%	226,328,346 95.47%	215,477,409 95.71%	200,215,531 95.46%	176,607,006 95.28%	139,283,435 95.14%	109,867,447 95.44%	44,535,077 93.39%
<b>Red Flag Computation 9</b>	784,767,401 24.64%	4,529,972 5.58%	21,074,000 10.68%	31,567,062 14.30%	45,269,709 16.87%	60,680,433 18.22%	73,509,153 22.64%	80,897,846 26.09%	83,071,858 29.32%	71,881,051 30.32%	71,957,040 31.96%	68,375,045 32.60%	61,726,031 33.30%	51,496,013 35.17%	41,652,960 36.18%	17,079,226 35.81%
<b>Red Flag Computation 11</b>	2,951,434,463 92.66%	61,287,794 75.44%	169,100,529 85.71%	196,847,421 89.20%	245,855,004 91.64%	312,550,157 93.85%	305,814,527 94.18%	294,831,315 95.07%	268,029,422 94.60%	222,360,244 93.80%	210,624,655 93.56%	196,202,506 93.55%	173,633,733 93.68%	137,154,839 93.68%	110,828,571 96.27%	46,313,745 97.12%
<b>Red Flag Computation 12</b>	1,905,810,920 59.83%	12,570,522 15.47%	60,949,551 30.89%	94,238,083 42.70%	144,529,067 53.87%	207,771,586 62.39%	206,702,814 63.66%	207,707,103 66.97%	192,814,877 68.06%	159,507,690 67.28%	152,456,769 67.72%	141,930,825 67.67%	123,978,363 66.89%	98,002,433 66.94%	73,708,788 64.03%	28,942,449 60.69%
<b>Red Flag Computation 14</b>	309,880,314 9.73%	2,211,449 2.72%	8,195,271 4.15%	16,192,330 7.34%	23,313,516 8.69%	30,281,889 9.09%	33,084,317 10.19%	32,996,874 10.64%	33,676,858 11.89%	29,335,969 12.37%	26,880,904 11.94%	23,243,723 11.08%	19,639,721 10.60%	14,781,624 10.10%	11,356,452 9.86%	4,689,417 9.83%
<b>Red Flag Computation 15</b>	2,372,368,869 74.48%	45,722,961 56.28%	131,469,278 66.63%	156,333,558 70.84%	196,628,713 73.29%	251,592,046 75.55%	246,946,855 76.05%	239,326,823 77.17%	218,303,804 77.05%	179,181,378 75.58%	170,059,128 75.54%	159,724,228 76.16%	141,276,174 76.22%	111,159,086 75.93%	88,327,289 76.73%	36,317,547 76.16%
<b>Red Flag Computation 16</b>	1,388,429,100 43.59%	11,686,590 14.38%	51,941,564 26.33%	77,974,732 35.33%	104,846,485 39.08%	138,244,542 41.51%	145,937,253 44.94%	145,086,676 46.78%	132,516,138 46.77%	110,021,610 46.41%	108,959,591 48.40%	101,814,786 48.55%	92,369,860 49.83%	78,597,994 53.69%	61,953,144 53.82%	26,478,136 55.52%
<b>Flagged for Any of the Red Flag Computation</b>	3,177,454,044 99.76%	78,570,253 96.71%	196,031,367 99.36%	220,030,064 99.71%	267,749,800 99.80%	332,553,042 99.86%	324,355,650 99.89%	309,861,237 99.91%	283,045,216 99.90%	236,760,645 99.87%	224,877,986 99.89%	209,522,370 99.90%	185,166,413 99.90%	146,255,981 99.90%	115,034,184 99.93%	47,639,835 99.90%

**Notes**  
 Defendant Date Range  
 Walgreens 1/2006 - 6/2020

**Summary of Dispensing Red Flag Analysis  
San Francisco County, CA  
Nonrecurrent - Flagged Multiple Times**

<b>Defendant</b>	<b>Walgreens</b>	
<b>Total # of Opioid Prescriptions</b>	<b>2,478,103</b>	
Opioid Prescriptions Flagged - 2+ Methods	796,224	32.13%
Opioid Prescriptions Flagged - 3+ Methods	348,282	14.05%
Opioid Prescriptions Flagged - 4+ Methods	132,199	5.33%
Opioid Prescriptions Flagged - 5+ Methods	42,655	1.72%
Opioid Prescriptions Flagged - 6+ Methods	11,608	0.47%
Opioid Prescriptions Flagged - 7+ Methods	2,895	0.12%
Opioid Prescriptions Flagged - 8+ Methods	598	0.02%
Opioid Prescriptions Flagged - 9+ Methods	100	0.00%
Opioid Prescriptions Flagged - 10+ Methods	10	0.00%
Opioid Prescriptions Flagged - 11+ Methods	1	0.00%
Opioid Prescriptions Flagged - 12+ Methods	0	0.00%

***Notes***

Defendant

Walgreens

Date Range

1/2006 - 6/2020

**Summary of Dispensing Red Flag Analysis  
San Francisco County, CA  
Recurrent - Flagged Multiple Times**

<b>Defendant</b>	<b>Walgreens</b>	
<b>Total # of Opioid Prescriptions</b>	<b>2,478,103</b>	
Opioid Prescriptions Flagged - 2+ Methods	2,340,110	94.43%
Opioid Prescriptions Flagged - 3+ Methods	2,119,492	85.53%
Opioid Prescriptions Flagged - 4+ Methods	1,768,184	71.35%
Opioid Prescriptions Flagged - 5+ Methods	1,401,094	56.54%
Opioid Prescriptions Flagged - 6+ Methods	1,090,580	44.01%
Opioid Prescriptions Flagged - 7+ Methods	849,840	34.29%
Opioid Prescriptions Flagged - 8+ Methods	636,828	25.70%
Opioid Prescriptions Flagged - 9+ Methods	440,377	17.77%
Opioid Prescriptions Flagged - 10+ Methods	268,426	10.83%
Opioid Prescriptions Flagged - 11+ Methods	138,413	5.59%
Opioid Prescriptions Flagged - 12+ Methods	57,549	2.32%
Opioid Prescriptions Flagged - 13+ Methods	15,962	0.64%
Opioid Prescriptions Flagged - 14+ Methods	2,464	0.10%

***Notes***

Defendant  
Walgreens

Date Range  
1/2006 - 6/2020