
From: Napoli, Thomas </O=MAIL/OU=EXCHANGE ADMINISTRATIVE GROUP (FYDIBOHF23SPDLT)/CN=RECIPIENTS/CN=TOM.NAPOLI>
To: William Simmons (wsimmons@actavis.com)
Sent: 7/31/2014 2:59:50 PM
Subject: FW: US Generic S&OP Deck
Attachments: July 2014 US Generic SOP Meeting.pptx

Will,

For your internal use. Some good information within, especially within the demand slides. Also some good intel on Rite-Aid's award of Oxy 15/30 through McKesson.

I will forward this to you each month because it provides good intel that we don't always get from the business.
Tom

From: Ann M Cipkins
Sent: Thursday, July 31, 2014 9:45 AM
To: Diane L Beideman; Paul M Bisaro; Andrew S Boyer; Todd Branning; Cassano, Briana; Napoleon D Clark; Sara Copp; Thansee M Diaz; Ellen D Dommermuth; Marc L Falkin; Carolina M Garavaglia; Miguel A Gomez Rodriguez; Elsa Goncalves; Helga Gudlaugsdottir; Matthew Hellstern; Walter J Hetrick; Robert S Kulik; David Marlow; Jessica McLeod; Christine A Miller; Kimberley Nair; Tom P Napoli; Christina L Perry; Jill Plum; Jeff V Regan; Robert P Rieping; Christina Rivera; Rick C Rogerson; Robert A Stewart; Wayne R Swanton; Jennifer Wang; James A Williamson; Karin L Wills; Cassano, Briana
Subject: RE: US Generic S&OP Deck

Attached is the Generic S&OP deck.

Ann Cipkins
Director Demand Management
400 Interpace Parkway Bldg A
Parsippany, NJ 07054
862-261-7454
Cell 973-722-5406
** Ann.Cipkins@Actavis.com*

 Actavis


CHALLENGE · CONNECT · COMMIT
Our Winning Way

This message and its attachments are intended for the named addressee only, and may contain confidential, proprietary or legally privileged information. No confidentiality or privilege is waived or lost by any mistransmission. If you have by coincidence or mistake received this email and its attachments, please immediately delete it and all copies of it from your system, destroy any hard copies of it and notify the sender. You must not, directly or indirectly, use, disclose, distribute, print or copy any part of this message or its attachments if you are not the intended recipient. Please note that the sender of this e-mail and its attachments is solely responsible for its content if it does not concern the operations of Actavis or its affiliates.



Confidential

Acquired_Actavis_0247651

PLAINTIFF TRIAL
EXHIBIT
P-02439_00001

P-02439_00001

File Provided Natively

Confidential

Acquired_Actavis_02476518

P-02439 _ 00002



US Generic S&OP

July 30, 2014

building
the **BEST**

Agenda

PEOPLE·PRODUCTS·COMPANY

- Action Items All
- Metrics All
- Demand Review A. Cipkins
- Supply Review T. Perry
- Summary All

The Actavis logo consists of a stylized 'A' symbol above the word 'Actavis'. The 'A' is composed of two overlapping shapes, one blue and one green. The word 'Actavis' is written in a green, sans-serif font.

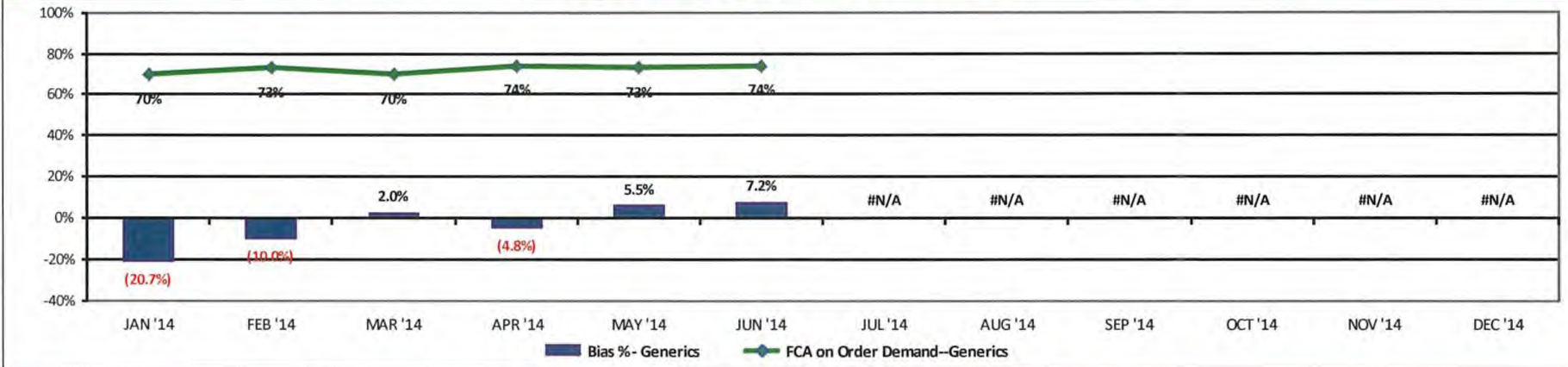
Action Items

1. **Pantoprazole: J. Regan** to source alternate supplier
2. **Quinidine Sulfate: Marketing** to advise if item can be discontinued (300mg 100ct).
3. **Bupropion: D. Marlow** to understand capacity from Sivic.
4. **Pravastatin: Marketing** to review/update forecast. Sandoz re-launched recently.
5. **Telmisartan: Marketing** to provide revised forecast based on increased competition
6. **Dexmethylphenidate:**
 - a. **D. Marlow** to follow up on quota. How much available vs. API availability?
 - b. **Marketing** to confirm launch timing for 5mg, 10mg, 15mg, 20mg sku's
7. **Testosterone Cypionate:**
 - a. **C. Miller** to confirm launch timing of 1ML sku.
8. **Lidocaine/Prilocaine: Marketing** to confirm timing and quantity of potential opportunity.
9. **Doxycycline Hyclate: Marketing** to confirm timing and quantity of potential opportunity.



US GENERICS FCA & FCB

US Forecast Accuracy and Bias



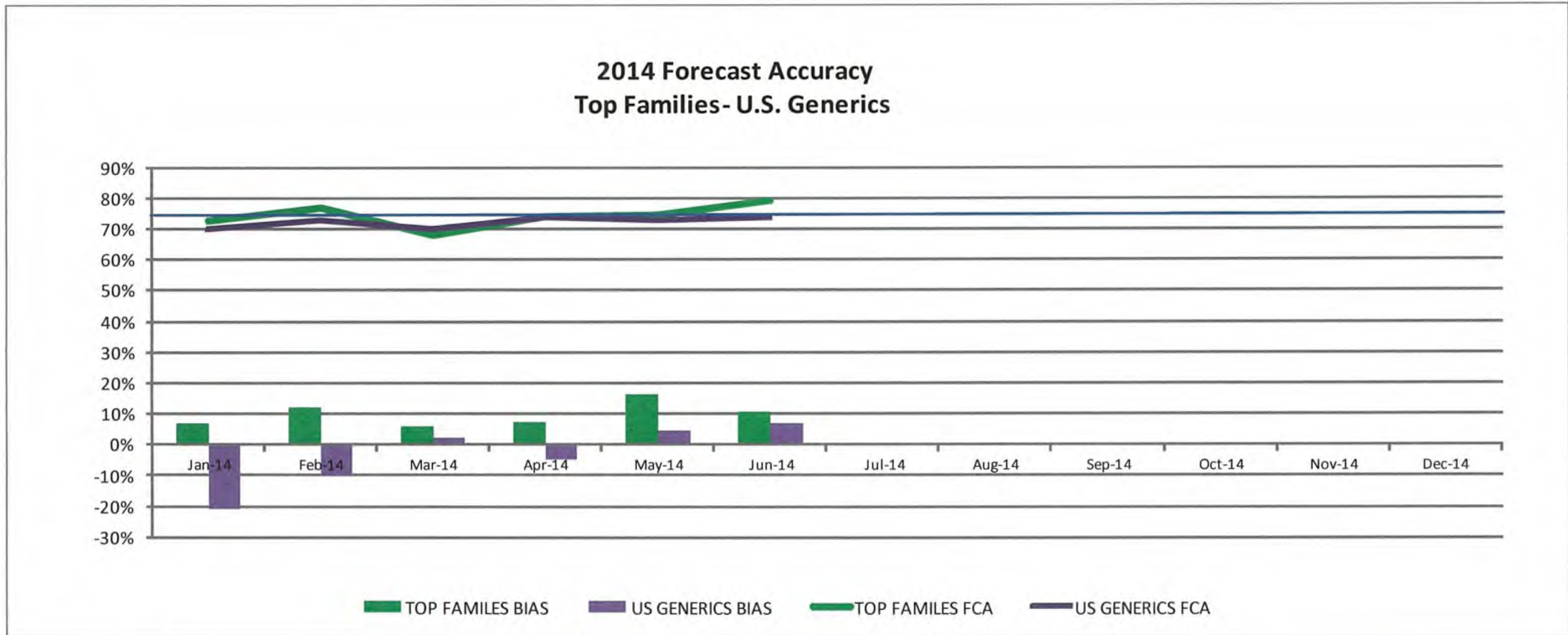
Data Displayed in Charting		Current Year				Current Reporting Month: JUN '14		
	Data Format	Current Month	Target	Current YTD (Average)	Previous YTD (Average)	Prod. Family	ABC Indicator Rank	Comments
Forecast Accuracy	%	74%	75%	72%	74%	DICLO SOD/MISOP	A	Corrected positive bias within frozen period
Forecast Bias	%	7.2%	5.0%	-3.5%	-1.5%	OXYCODONE HCL	A	Awarded business (Publix) within frozen period
						TESTOSTERONE	A	Lost business (CVS & Wal-mart) within frozen period

		Current Year 2014														
	Data Format	Target	Previous YTD (Average)	Current YTD (Average)	JAN '14	FEB '14	MAR '14	APR '14	MAY '14	JUN '14	JUL '14	AUG '14	SEP '14	OCT '14	NOV '14	DEC '14
FCA on Order Demand--Generics	%	75%	74%	72%	70%	73%	70%	74%	73%	74%						
Bias %- Generics	%	+4%	-1.5%	-3.5%	-20.7%	-10.0%	2.0%	-4.8%	5.5%	7.2%						
YTD Result - Generics	%		74%	72%	71%	72%	71%	71%	72%	72%						





Metric: U.S. FCA – Top Families

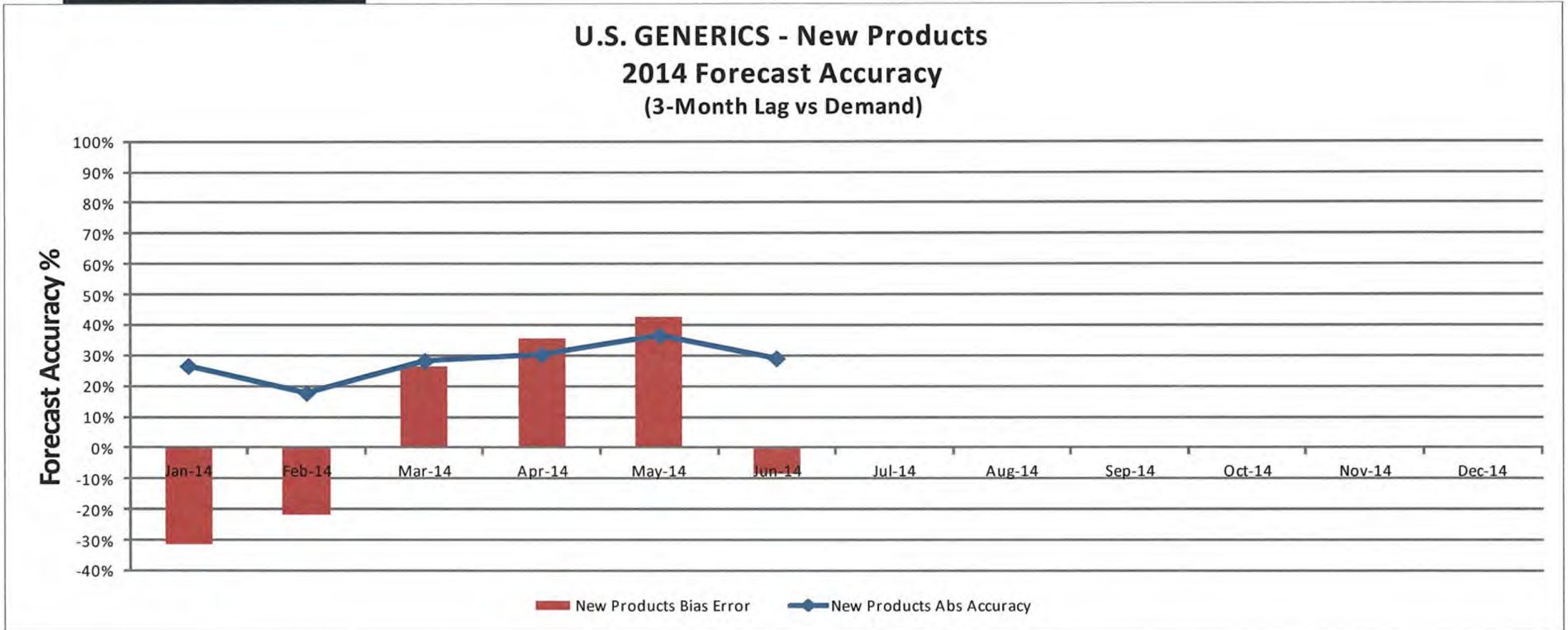


Top Families:				Contributors to bias:	Bias %	Comment:
% YTD	Target	% YTD	Target (+/-)			
74%	75%	9.9%	+4%	MATZIM LA	43%	Decreases per current sales out and new competitor entered market.
				OXYCODONE/APAP	25%	Lost Walgreen's and ABC since supply issues in Mar/Apr
				TESTOSTERONE	37%	Lost Wal-mart business in frozen period. Continue to lose market share to other competitors





Metric: U.S. Forecast Accuracy New Products



Monthly Absolute Accuracy													
	Jan-14	Feb-14	Mar-14	Apr-14	May-14	Jun-14	Jul-14	Aug-14	Sep-14	Oct-14	Nov-14	Dec-14	2014 AVG
New Products	27%	17.6%	28.1%	30.2%	36.7%	28.9%							28%

Monthly BIAS Tracking													
	Jan-14	Feb-14	Mar-14	Apr-14	May-14	Jun-14	Jul-14	Aug-14	Sep-14	Oct-14	Nov-14	Dec-14	2014 AVG
New Products	-31%	-21.8%	26.4%	35.7%	42.5%	-8.3%							7%





U.S. Forecast Accuracy – July 2014

New Products Detail

PEOPLE·PRODUCTS·COMPANY

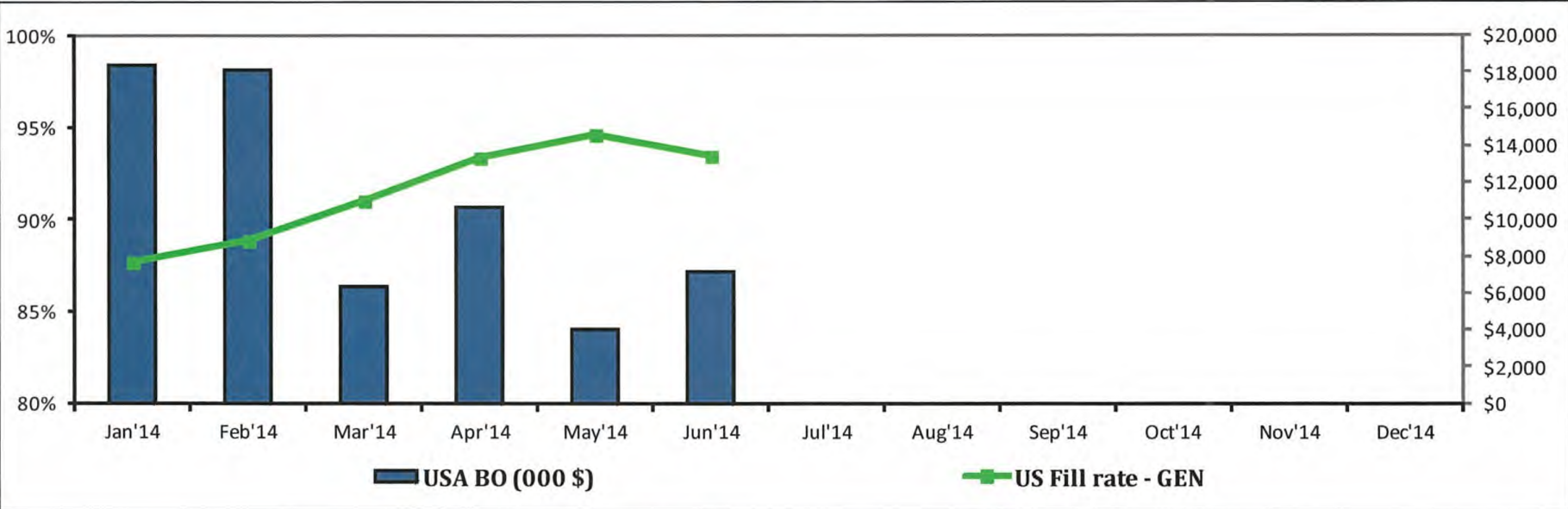
Family	Launch Date	Scenario	Target				Comments
			Mkt Share	ABC Error	Bias	Abs Accuracy	
OMMORPHONEHLR60s	Feb-14	latew/3	25%	N	64%	38%	Over-forecasted customer response to 60s launch; not shifting from 100s
MORPHINESLAMZA	Feb-14	Exclusive	100%	N	37%	68%	Scenario changed from On-Time w/2 to Exclusive with in frozen period
DEMEIHLR-ENDATE	Feb-14	latew/4	15%	N	100%	0%	launched w/ short dated product; waiting for fresh stock to approach customers (July) still waiting
AMPHETAMINESCOMBO	Apr-14	latew/6	10%	N	81%	19%	Over-forecast market share goal; currently pursuing O/S business. Forecast was reduced to current trends in July pass
CLONIDINETS	May-14	latew/3	20%	N	65%	35%	Over-forecasted with in frozen period but hit Mkt assumption at time of launch in May.
HIDROMORPHONE	May-14	FIF	50%	N	11%	89%	Great results!





Metric: US Fill Rate

US Fill Rate



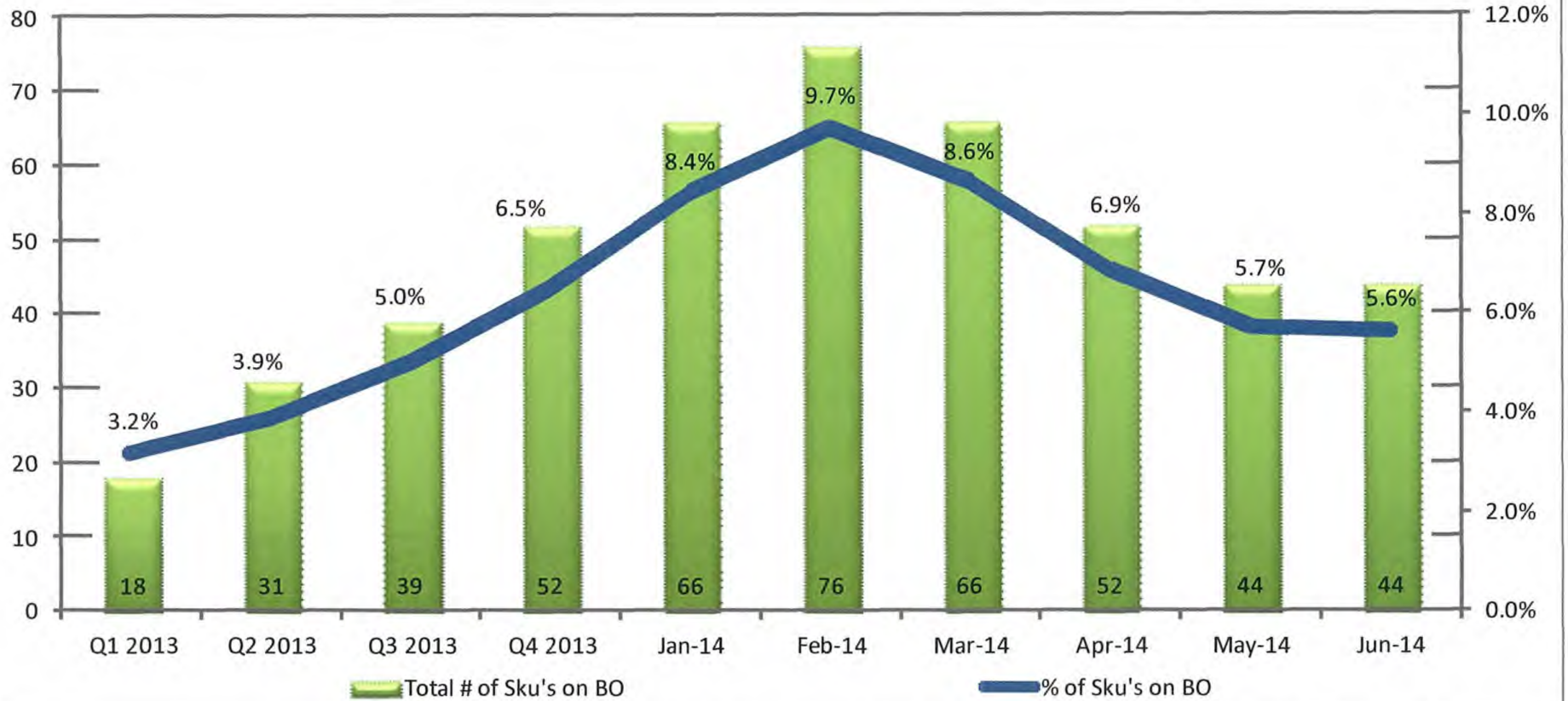
Market	Service Level % Month	Service Level % YTD	Service Level Target	PY Service Level %	Backorders (\$000 USD) Month
US	93.5%	92.2%	95%	94.3%	\$4,022

Note: 2014 metric is based on lines vs. orders

Prod. Family	Site	Fill Rate Impact	Comments
CYCLOSPORINE	TPM	0.34%	Delayed transfer
TAMSULOSIN HCL	Elizabeth Mfg	0.28%	PKG constraint
ATENOLOL CHLOR	GOA	0.25%	API Availability
VALSARTAN HCTZ	Florida	0.22%	Bulk shipment delayed by 3 weeks
VALACYCLOVIR HCL ACT	TPM	0.21%	Vivimed API delays



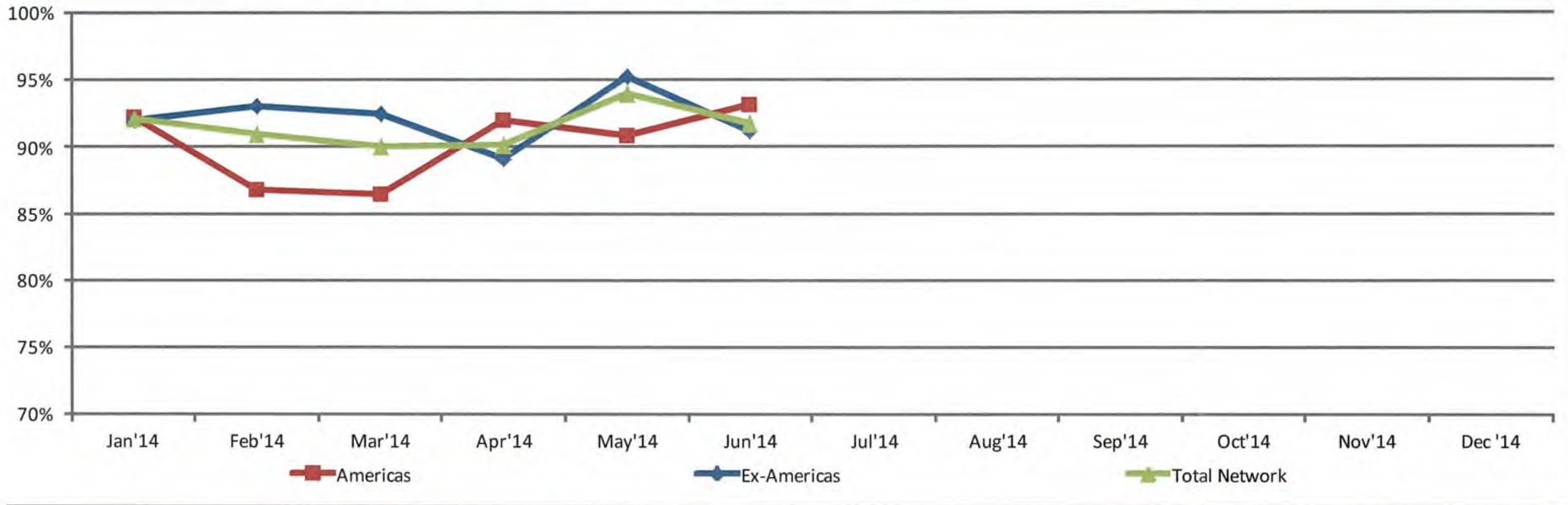
Metric: % of SKUs on Backorder



	Q1 2013	Q2 2013	Q3 2013	Q4 2013	Jan-14	Feb-14	Mar-14	Apr-14	May-14	Jun-14
% of Sku's on BO	3.2%	3.9%	5.0%	6.5%	8.4%	9.7%	8.6%	6.9%	5.7%	5.6%
Total # of Sku's	566	788	786	799	782	780	764	758	771	780
Total # of Sku's on BO	18	31	39	52	66	76	66	52	44	44
Total BO	\$1,087	\$1,640	\$3,805	\$9,555	\$18,354	\$17,774	\$6,370	\$10,613	\$3,944	\$3,914

Schedule Adherence

Global Internal Mfg. Plants - Schedule Adherence



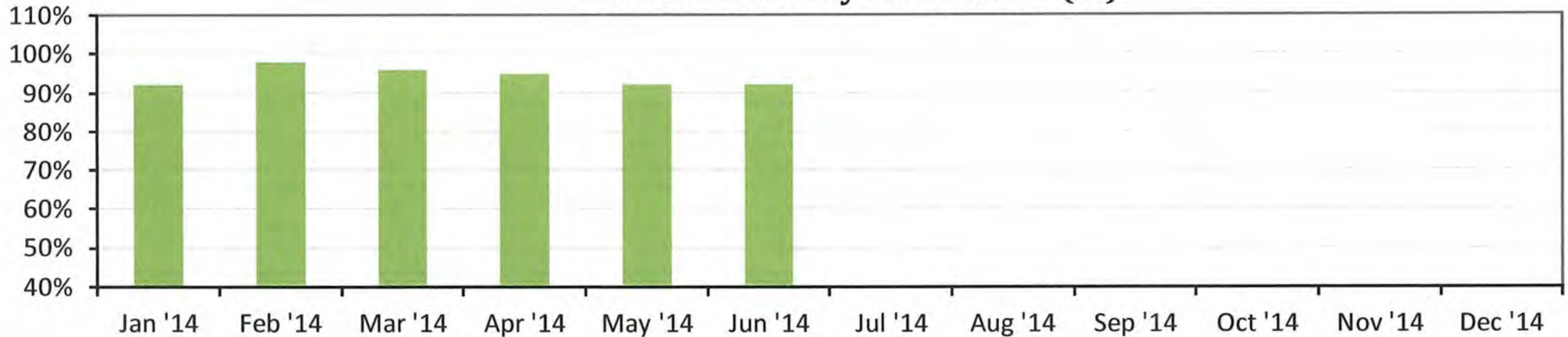
Schedule Adherence	% Month	% YTD	Target	Prior Yr
Americas	91%	90%	90% FG 85% Bulk	88%
Ex-Americas	95%	93%	90%	94%
Total Network	94%	92%	90%	92%

Site	Reason Code	Comments
Malta Hal Far (86%)	Exec - Equip	Alendronate 70MG: Machine down (High speed Line)
	Exec - Equip	Pramipexole: Pin hole issue
	Exec - Ops	Azithromycin: Awaiting reply from supplier re- shelf extension of API
	Exec - Qual	Valsartan: 2 batches rejected
Goa (85%)	Exec - Qual	Lorazepam: Quality document error
	RMQ	Allopurinol: Flow issues due to API particle size
	Exec - Qual	Ciprofloxacin: Core release delay
	Exec - Qual	Nabumetone: Core release delay

TPM Delivery Performance

US TPM Delivery Performance

U.S. TPM Delivery Performance (%)



Market/Region	Performance % Month	Performance % YTD	Target	Prior Yr 2013
US	92%	94%	95%	91%

Market	Supplier	Comments / Issues & Corrective Actions (CA)
US	Patheon Canada	Sronyx: Late deliveries due to OOS Stockout: N/A CA: Widening spec for particle size CBE-0
US	Abbvie	Dronabinol 2.5mg & 5mg: Label changes pushed March deliveries to 5/5. Bulk arrived at pkg site late & pushed 5/5 delivery to 5/30. Validation activities ran over schedule & pushed 5/30 delivery to early June. Stockout: Dronabinol 5mg (from 5/13 to 6/3); 2.5mg (from 5/28 to 6/6) CA: Abbvie to monitor Progesterone activities closer to avoid another early ship.
US	Intas	Finasteride: Late deliveries Stock Out: \$20k CA: Bi-weekly status updates



% FG below SS

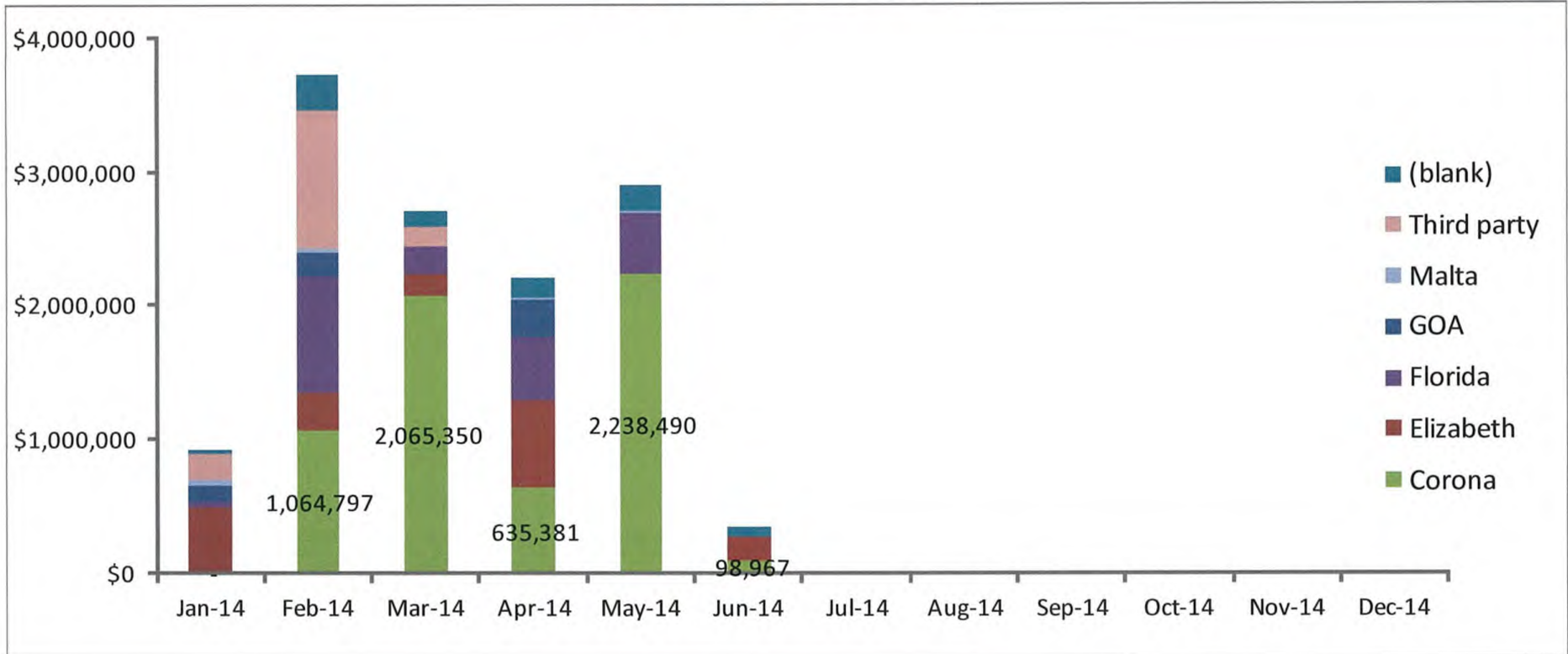
PE % SKUs below SS threshold									
Breakdown by Site - US Mkt	Nov-13	Dec-13	Jan-14	Feb-14	Mar-14	Apr-14	May-14	Jun-14	Jul-14
TPM	14%	17%	18%	21%	18%	14%	15%	15%	17%
Corona	31%	41%	39%	40%	33%	22%	12%	12%	11%
SLC	0%	0%	6%	6%	7%	0%	6%	0%	0%
Florida	24%	32%	30%	42%	48%	33%	23%	16%	11%
Malta	8%	17%	19%	36%	24%	28%	38%	25%	15%
Goa	15%	19%	8%	4%	13%	16%	25%	18%	14%
Elizabeth	20%	25%	37%	32%	37%	41%	45%	35%	31%
Lincolnton	7%	8%	14%	11%	13%	17%	11%	10%	10%
Copiague	6%	10%	15%	9%	30%	30%	25%	15%	5%
WC Ireland								0%	0%
WC Puerto Rico							0%	0%	0%
WC TPM							10%	4%	0%
US Total	15%	20%	22%	22%	24%	23%	22%	17%	17%

Site	Comments	Recovery
Elizabeth	MRF Capacity/Prioritization (Duloxetine, Mixed Amphetamine, Propranolol) Gabapentin Capsules Site Transition (Vivimed Delays) Dextroamphetamine Launch (18 month shelf life)	Sept Oct Aug



US Failure to Supply

US Failure To Supply



Market	Failure to Supply Value Month	Failure to Supply Value YTD
US	\$ 347,896	\$ 12,801,390

Prod. Family	Site	Amount (\$000)	Comments
PROPRANOLOL ER	Elizabeth	\$ 167	Deprioritized in MRF capacity
AMETHIA	Corona	\$ 67	Recovery of Corona OC products





TU Summary (as of 7/1)

SKU	Description	TU End Date	Cumulative Lost Sales	Cumulative Lost Margin	Reason Code	Comments
00228402911	OXY/IBUPROFEN 5/400MG TAB 100	8/1/2014	11,711	7,719	API Issue	<ul style="list-style-type: none"> CBE-30 submitted for Oxy spec consolidation in June MFG/PKG complete. Product at Gurnee on 8/1.
00591322126	TEST ENA INJ 200MG/ML 5ML VIAL	8/4/2014	1,082,012	802,362	API issue	<ul style="list-style-type: none"> Hikma shipment delay
00228263611	GABAPENTIN 600MG TAB 100	1/1/2015	119,121	24,328	Capacity Constraint	<ul style="list-style-type: none"> MRF capacity constraint TU end dependent on manufacturing transfer to Goa
00228263750	GABAPENTIN 800MG TAB 500	1/1/2015	240,397	53,775		
00591375701	AMLOD BESY/BEN 2.5/10MG C100	1/15/2015	469,481	325,111	Stability failure	<ul style="list-style-type: none"> Modifying pack type to add more dessicant, change is annual reportable.
00591375801	AMLOD BESY/BEN 5/10MG CAP100	1/15/2015	619,688	474,449		
00591375805	AMLOD BESY/BEN 5/10MG CAP500	1/15/2015	1,484,902	1,124,533		
00591543801	QUINIDINE 200MG TAB 100	9/15/2014	22,952	13,155	API issue	<ul style="list-style-type: none"> API availability & technical issue requiring PT investigation
00591037001	LOXAPINE 10MG CAP 100	8/1/2014	253,345	143,450	API issue	<ul style="list-style-type: none"> Transfer challenges



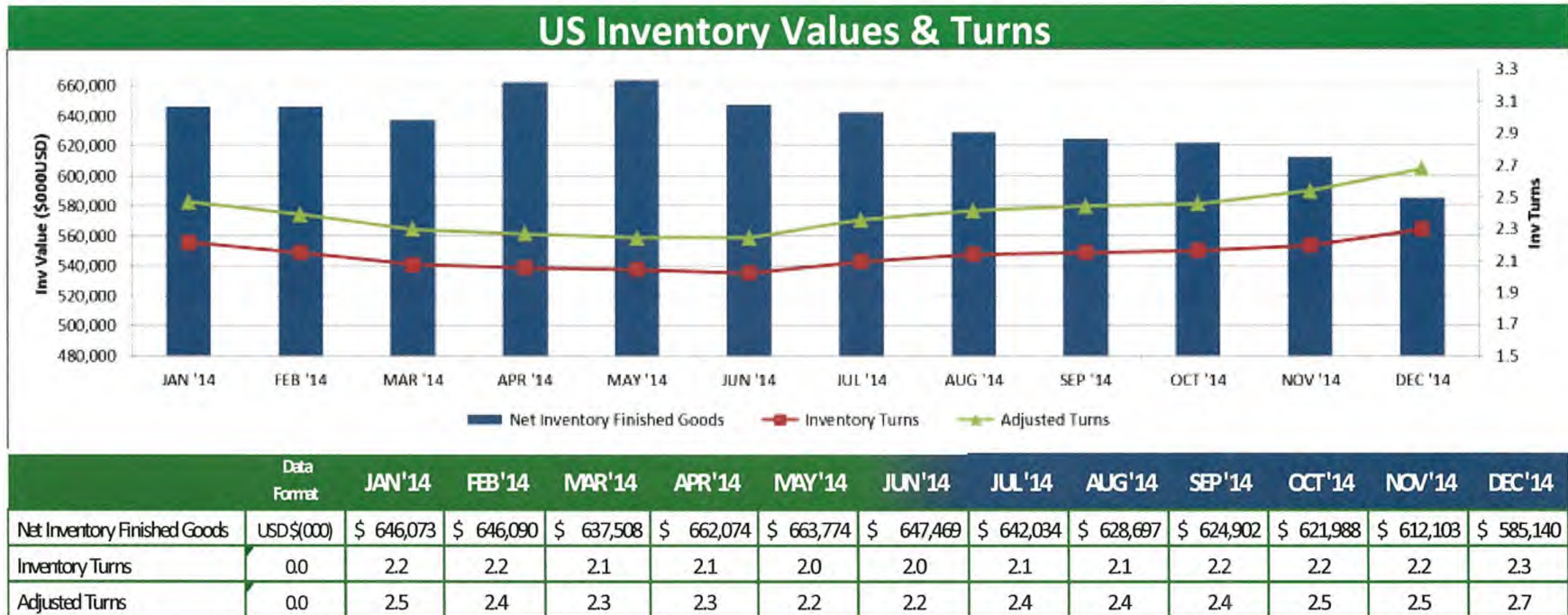
TU Summary (as of 7/1)

SKU	Description	TU End Date	Cumulative Lost Sales	Cumulative Lost Margin	Reason Code	Comments
00591333105	BUPROPION XL 150MG TAB 500	TBD	569,158	404,015	Stability failure	<ul style="list-style-type: none"> Re-launch delayed due PV2 dissolution failure Pursuing TPM manufactured product
00591333119	BUPROPION XL 150MG TAB 90	TBD	4,333,072	3,676,203		
00591333130	BUPROPION XL 150MG TAB 30	TBD	3,274,707	2,717,921		
16252052750	PRAVASTATIN 20MG TAB 500	9/1/2014	95,555	62,657	Business Decision	<ul style="list-style-type: none"> Re-launch planned based on market demand Launch build production in process
16252052790	PRAVASTATIN 20MG TAB 90	9/1/2014	47,830	18,491		
16252052850	PRAVASTATIN 40MG TAB 500	9/1/2014	26,842	3,381		
16252052890	PRAVASTATIN 40MG TAB 90	9/1/2014	859,864	619,102		
16252052990	PRAVASTATIN 80MG TAB 90	9/1/2014	2,007,111	1,425,049		
00591356115	VANCOMYCIN 250MG CAP 2 X 10	8/8/2014	579,528	495,478	Stability failure	<ul style="list-style-type: none"> Stability failures / ongoing investigation resulting in all inventory being placed on hold
00591356015	VANCOMYCIN 125MG CAP 2 X 10	10/20/2014	688,009	458,960		
Total			\$15,691,561	\$12,040,058		



US – Inventory Turns

PEOPLE-PRODUCTS-COMPANY



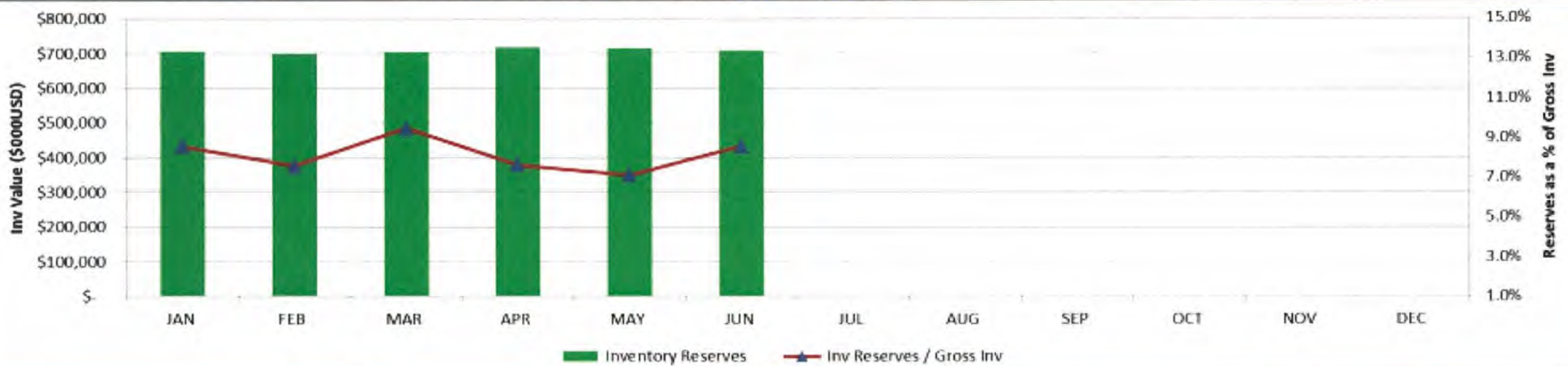
- Inventory figures and turns include Warner Chilcott less intercompany markup.
- Adjusted turns excludes strategic inventory of \$65mm in June 2014.



US Inventory Reserves

PEOPLE-PRODUCTS-COMPANY

US Inventory Reserves



	Data Format	Current Month	Budget	Year End Projection	Comments
Inventory Reserves	USD\$(000)	\$0,887			Gross inventory and reserves include Water Chikitt
Gross Inventory	USD\$(000)	\$708,356			
Inv/Reserves/Gross Inv	%	8.6%			

Market	Product	Root cause	Exposure	Short-date	Action
US	Next Choice OTC	Late to market by >7 months. Actual forecast lower than the volume built for.	\$3,290,439	Q1-Q2 2015	Marketing to pursue additional business.
US	Ramipril	Significant forecast decrease.	\$1,000,000	Jul14 - Jan15	Marketing to pursue additional business
US	Hydrocodone/Ibuprofen	Demand decreases, large batch size vs. FCST	\$560,000	Q3'14 & Q2'15	Marketing to evaluate. Product to be reviewed at PRG.
US	Hydro/Apap 10/325MG 100 ct	Significant forecast decrease in March (78%)	\$507,000	Q1 2015	Plan to repack into 500 count being developed



PEOPLE·PRODUCTS·COMPANY



DEMAND UPDATE



building
the BEST

Demand Review – US- Major Changes July Cycle

PEOPLE·PRODUCTS·COMPANY

FAMILY	ABC Rank	Chg Next 12 Mo in SDUs	% Inc/Dec	Comments
ALBUTEROL SUL INH	B	(77,050.5)	-21%	MtKesson loss resulting in reduction offset slightly by Target award
BAC	B	39,746.5	81%	Awarded business for Innovativ, Target and Winn Dixie + removal of cannibalization assumption for the 50/325/40MG sku
CLONAZEPAM	B	125,831.9	39%	MtKesson award (100ct skus) and one time buys for GSM increasing forecast
DESONIDE	A	5,925.9	30%	New business for: Target, Winn Dixie, MtKesson, and IPC awards resulting in increases for all sku's in family
DULOXETINE HYDROCHLO	N	(30,574.0)	-14%	Change to unconstrained forecast, decreased by add'l competitors who entered the market in addition to price erosion
HCTZ CAP	B	(38,695.2)	-46%	Lost MtKesson business for both sku's in family
LORAZEPAM	B	(78,462.0)	-10%	Decline in sales out for MtKesson, ABC and W*Ms since supply issues from Feb-Apr
MIXED AMPHETAMINE	N	(40,424.0)	-47%	Forecast reduced based on current customer acceptances. Increase in the number of competitors since initial launch and regulatory hold issue
PERIVETHRIN CREAM	A	14,593.4	31%	Awarded Target, Winn Dixie & MtKesson new business
RAMIPRIL Capsules	B	(19,416.8)	-25%	Decreased to reflect lower sales out, ABC trending low
SILVER SULFADIAZINE	B	(19,336.7)	-23%	Loss of business after supply issues resulted in forecast reductions
ZOLPIDEM TARTRATE ER	A	(10,106.3)	-29%	Lost MtKesson business for 100 count sku's in family





2014-2015 Demand Comparison Top Families

Family	Total 2014 Budget SDU's	Total 2014 Fcst SDU's	Chg Fcst vs. Budget 2014	% Chg Fcst vs. Budget 2014	Total 2015 Budget SDU's	Total 2015 SDU's	% Chg Fcst vs. Budget	YOY % Chg 2015 vs 2014 Fcst in SDUs	2014 Chg vs Prev Fcst	2015 Chg vs Prev Fcst
BUPRENORPHINE/NALOXN	19,440	31,483	12,043	62%	29,475	34,619	5,144	10%	-3%	-3%
BUPROPION XL	128,335	74,734	(53,601)	-42%	129,577	129,461	(116)	73%	-5%	0%
DOXYCYCLINE HYCL	167,923	139,600	(28,323)	-17%	92,687	139,202	46,515	0%	-2%	0%
GLIPIZIDE ER	260,999	212,980	(48,018)	-18%	195,756	211,638	15,882	-1%	-1%	-2%
HYDROCODONE	2,042,429	1,455,433	(586,995)	-29%	1,882,840	1,480,146	(402,694)	2%	-1%	-4%
LIDOCAINE PATCH	82,812	97,801	14,988	18%	73,064	69,427	(3,637)	-29%	0%	0%
MATZIM LA	13,976	11,534	(2,442)	-17%	13,453	10,349	(3,104)	-10%	-14%	-22%
METFORMIN HCL XT AG	20,430	23,252	2,822	14%	25,967	25,167	(801)	8%	2%	0%
METHYLPHENIDATE	144,340	97,100	(47,240)	-33%	113,834	111,823	(2,011)	15%	-1%	0%
METHYLPHENIDATE AG	119,106	161,426	42,320	36%	157,661	163,569	5,908	1%	0%	0%
METOPROLOL SUCC ER	819,446	870,193	50,747	6%	816,283	883,409	67,126	2%	0%	0%
MIXED AMPHETAMINE	124,574	25,647	(98,928)	-79%	115,137	52,147	(62,991)	103%	-44%	-50%
MORPHINE ER (KADIAN)	10,205	9,097	(1,108)	-11%	9,207	9,279	72	2%	-1%	0%
OXYCODONE/APAP	698,941	647,201	(51,740)	-7%	656,576	686,103	29,527	6%	-1%	-1%
PERMETHRIN CREAM	47,359	53,163	5,804	12%	46,898	61,496	14,598	16%	18%	31%
POTASSIUM CHL TAB	394,024	438,825	44,801	11%	393,839	409,632	15,793	-7%	9%	4%
PREDNISONE	425,237	177,879	(247,358)	-58%	192,599	162,359	(30,240)	-9%	-2%	-2%
PROPRANOLOL ER	101,754	93,120	(8,634)	-8%	118,636	86,551	(32,084)	-7%	-10%	-15%
TESTOSTERONE	14,208	8,951	(5,257)	-37%	13,786	8,550	(5,236)	-4%	-2%	-4%
ALL OTHER OC'S	1,148,004	1,037,382	(110,622.0)	-10%	1,095,039	1,017,955	(77,084)	-2%	-2%	-3%
TOTAL TOP FAMILIES	6,783,541	5,666,801	(1,116,740)	-16%	6,172,315	5,752,882	(419,433)	2%		
GRAND TOTAL:	17,400,469	16,753,232	(647,237)	-4%	17,846,893	17,390,518	(456,375)	4%	-1%	-2%

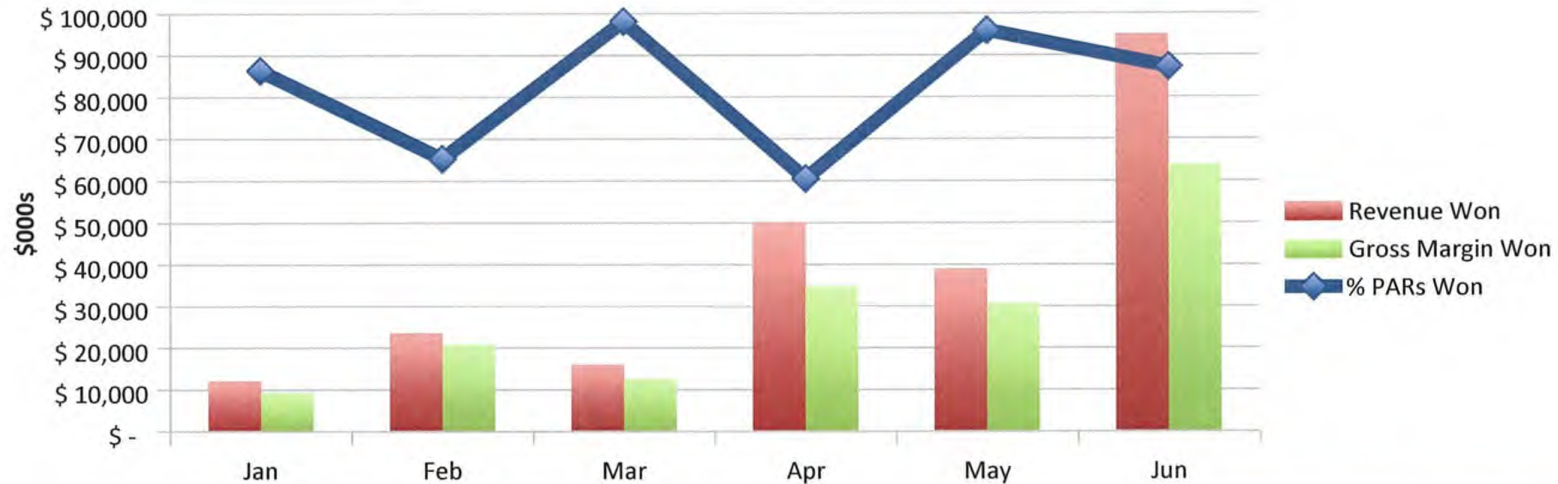
Note:
represents Apr
pass



building
the **BEST**

2014 PAR Performance YTD Summary

PEOPLE·PRODUCTS·COMPANY



% of Pars Won						
	Jan	Feb	Mar	Apr	May	Jun
% PARs Won	86.4%	65.3%	98.1%	60.6%	95.9%	87.2%
Revenue Won	\$ 12,189	\$ 23,629.25	\$ 16,093.16	\$ 50,102.70	\$ 39,008.65	\$ 95,139.15
Gross Margin Won	\$ 9,399.21	\$ 21,022.37	\$ 12,795.10	\$ 34,963.80	\$ 30,796.60	\$ 63,952.13

Top Awarded Opportunities	
SAP Family	Net Annual Value
ENOXAPARIN SOD	31,443,800
METOPROLOL ANDRX	15,309,191
DESONIDE	8,492,670

*June #s are Opportunities initiated prior to 06/04 with a response in June



building
the **BEST**

PEOPLE·PRODUCTS·COMPANY

June PAR Summary

*Excluding RFPs (Data Source: CAPs)

Top Families Won - June		
Family	# of Opportunities	Value
ENOXAPARIN SOD	7	3,268,620.61
OXYMORPHONE HCL ER	2	3,018,369.20
DULOXETINE HYDROCHL	2	2,239,777.70
CARTIA XT	12	694,949.66
BACC	1	169,451.52
TOTAL-JUNE	43	10,165,298.06

Missed Opportunities By Reason Code			
Reason Code	# of Opportunities	Value	Comments
Other-No Response	26	34,625,387	No response received from customer
Pricing	4	33,979,484	Offer rejected/not accepted due to pricing
Other-No Reason provided	5	12,262,750	Customer declined offer
No Bid - Lead time	4	1,245,417	Decision not to bid on business (Sumatriptan-TU)
No Bid-Pricing	5	231,084	Pricing decision to not bid on business
LT - Customer Reject	1	150,090	Valacyclovir 150 day LT rejected by customer
Strategic Decision	1	23,119	Marketing decision not to bid on business
Total	46	80,114,969	

*June #s are Opportunities initiated on or after 06/04 with a response in June



- McKesson has confirmed the Rite Aid award for Oxy 15mg & 30mg beginning in September. The volume is:
 - > 30 MG 391,888 units annually
 - > 15 MG 351,675 units annually
- Potential opportunities:
 - Bad inspection for API supplier Ipca, which may create opportunity for us.
 - Clonidine TDS Patch-Teva is expecting to be on BO for a few weeks because of an API issue. May want to hedge our safety stock for a few weeks.

New Products Cycle to Cycle Change and Comparison to Budget

Family	Site	Site Budget	Launch Date	18 month Budget (000 SDUs's)	Total July SDUs('000s)	Total June SDUs ('000s)	Delta '000 SDUs)	July Vs. June % Delta	Commentary
Amphetamine Combo Tablet Buprenorphine SL	Elizabeth Mfg	x	Apr-14	130,490	77,794	149,772	(71,978)	-93%	Reduction to forecast based on current customer acceptances; 10mg, 20mg, 30mg Launched in April 2014. Number of competitors increased & regulatory hold driving gap to budget
	Elizabeth Mfg	x	Jul-14	16,574	16,712	14,878	1,835	11%	Revised forecast with latest Launch forecast reflects Late w/4
Donepezil ER	Elizabeth Mfg	x	Jul-14	2,371	1,797	2,467	(670)	-37%	Revised forecast per Latest Live model reflects Late w/4; Launch also moved to July 2014
Fluvoxamine	Elizabeth Mfg	x	Aug-14	2,191	2,008	2,008	-	0%	
Naproxen Sodium ER	Florida Mfg	x	Aug-14	690	869	1,386	(517)	-59%	Late w/2. 500mg had an incorrect LD, changed from June '14 to Aug '14 in the July pass
PRAVASTATIN SODIUM	Goa Mfd/Florida	x	Aug-14	245,410	174,646	174,646	-	0%	
NITROFURANTOIN	Goa Mfd/Florida	x	Sep-14	24,907	15,853	17,671	(1,818)	-11%	
RALOXIFENE HCL	Goa Mfd/Florida	x	Sep-14	36,660	28,799	24,638	4,161	14%	
LAMOTRIGINE	Goa Mfd/TPM	x	Sep-14	3,660	-	-	-	-100%	LD is TBD
ADAPALENE	Lincolnton Mfg		Oct-14		3,880	3,898	(18)	0%	
Guanfacine	Elizabeth Mfg	x	Oct-14	55,177	55,177	55,177	-	0%	
Fenofibric Acid	Florida Mfg		Dec-14	0	11,219	0	11,219	100%	Entered Launch beg Dec '14-reflects Late w/5
NITROFURANTOIN MONO MACRO	Goa Mfd/TPM	x	Dec-14	27,495	16,115	16,115	-	0%	
Estradiol TDS - Vivelle Dot	SLC Mfg	x	Dec-14	5,976	3,294	3,294	(0)	0%	
Clonidine ER	Elizabeth Mfg	x	Jan-15	15,890	12,059	15,890	(3,831)	-32%	Moved Launch forecast from Oct-2014 to Jan-15, due to regulatory cycle time.
Clozapine Tablets	Florida Mfg	x	Jan-15	22,974	17,708	20,749	(3,041)	-17%	Moved Launch forecast from June 2014 to Jan-2015, due to regulatory cycle time.
Metaxalone	Florida Mfg	x	Jan-15	27,000	19,275	19,275	-	0%	
REPAGLINIDE	Malta Mfd/Florida		Jan-15	0	10,013	13,469	(3,456)	-35%	LD moved from Sept '14 to Jan '15
VALSARTAN	Malta Mfd/Florida		Jan-15	0	60,768	-	60,768	100%	LD was TBD now Jan '15
DEXMETHYLPHENIDATE	TPM		Jan-15		3,146	3,848	(702)	-22%	Moved Launch forecast from Aug-2014 to Jan-15, due to regulatory cycle time.
Nitroglycerin	Florida Mfg	x	Mar-15	105,600	70,665	70,665	0	0%	
Paliperidone	Florida Mfg	x	Mar-15	5,236	4,100	4,100	-	0%	Two scenarios out there; budget may reflect upside.
COLCHICINE USP	Goa Mfd/TPM		Mar-15	0	14,823	14,823	-	0%	
COLESEVELAM HCL	Goa Mfd/TPM		Apr-15	0	27,665	27,665	-	0%	
Esomeprazole	Florida Mfg	x	May-15	40,000	54,569	81,474	(26,905)	-49%	Moved Forecast to May-2015 from Jan '15, due to regulatory cycle time.
Testosterone Pump 1%	SLC Mfg	x	Aug-15	0	10,214	10,214	-	0%	
Methylphenidate TDS	SLC Mfg	x	Sep-15	3,762	2,327	2,327	-	0%	
Testosterone Tubes - Testim	SLC Mfg	x	Dec-15	2,663	1,384	1,384	-	0%	
Fentanyl Matrix TDS	SLC Mfg	x	Jan-16	17,000	0	0	-	0%	Launch date moved out to 2016. due to regulatory cycle time.
Sirolimus	Florida Mfg	x	TBD	4,050	0	3,682	(3,682)	-100%	Initial forecast reflected FTF w/ a Launch of April 2014. Launch now TBD. due to regulatory cycle time.

building
the **BEST**

PEOPLE·PRODUCTS·COMPANY

SUPPLY UPDATE


Actavis

Capacity Constraints

Constraint	Site	Situation	Impact	Actions
Fluid-bed work centers	ELZ	High utilization for MRF products	MRF products (Duloxetine, Mixed Amphet ER, Propranolol, Diltiazem) limited availability to take on new business. Recovery pushed out to end of year due to recent issues (Diltiazem API, humidity)	<ul style="list-style-type: none"> ▪ Change parts to cross qualify Duloxetine put in place. Project to reduce change over time in progress. ▪ Working with Marketing to prioritize available line time.
Packaging	FLA	Packaging capability is not aligned with volume plan due resource constraints and product mix	Not meeting MPS requirements, low inventory, and service risks	<ul style="list-style-type: none"> ▪ Adjusted packaging plan to match 2014 capabilities by balancing volume across the network. ▪ Created packaging capacity expansion plan to be executed Aug 2014 – March 2015 ▪ Moved Diazepam & Lorazepam to Florida ownership Oct 2014.



Transfers

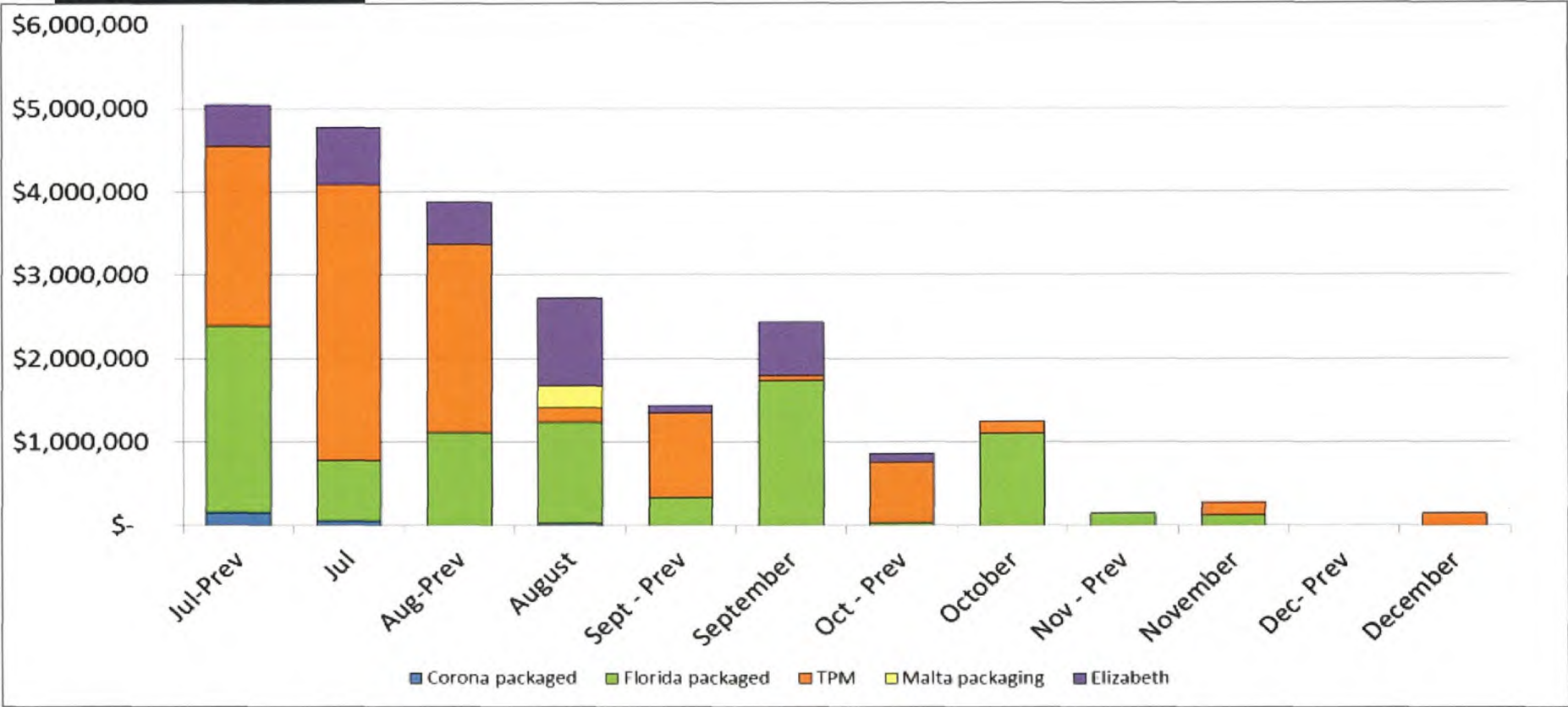
PEOPLE·PRODUCTS·COMPANY

Product Family	Donor Site	Receiving Site	Ownership Date	Status
Sumatriptan	Cobalt	Malta	TBD	<ul style="list-style-type: none"> • Equipment challenges – additional trial batch being run, targeting end of September shipment of bulk from Hal Far • Earliest resupply likely year-end • US out of stock, product to be TU. Canada out of stock in fall. • Discussion required on long-term CER • Trail batches have passed, will revalidate and commercial product available in October 2014.
Microgestin	Corona	Fajardo	June '14	<p>Cut over dates to Fajardo stock:</p> <ul style="list-style-type: none"> • Microgestin 1.5/30 126 21's: 8/4/14 • Microgestin 1.5/30 128 28's: 9/10/14 • Microgestin 1/20 126 21's: 8/18/14 • Microgestin 1/20 128 28's: 9/15/14





Backorder Projection



Florida Reduced bridge stock at transfer Gabapentin Caps & Valacyclovir (Aug – Oct)

TPM Methylphenidate release delayed (July)
Sumatripan to be TU (July – Oct)
Acyclovir API delay (Oct – Dec)

Elizabeth Diltiazem & Amphetimine ER capacity constraint (Aug – Sept)





US Service Risks

Product Family	Site	Recovery	Peak BO (\$000)	Current WOS	Supply Status
Verapamil HCL SR	TPM	Nov 2014	\$1,774	-1.4 to 4.9	<ul style="list-style-type: none"> Long lead time product due to process variability. Bead availability not able to fulfill all open orders.
Potassium Chloride	TPM	Oct 2014	\$1,938	4.2 – 11.0	<ul style="list-style-type: none"> Issue with supply of bulk from Aptalis – root cause is TBD Bulk production reduced from 25MM to 10MM tablets per month. Potential backorder in October. Bluepoint MTO requirement may be impacted.
Tamoxifen	FLA	Aug 2015	\$1,300	5.3 to 14	<ul style="list-style-type: none"> Market shortage causing an API shortage at the supplier Service impact starting Nov 2014, Backordered for May – Jul 2015
Methylphenidate ER	TPM	Aug 2014	\$1,256	2.6	<ul style="list-style-type: none"> Prior dissolution testing failure Issue now resolved, lots packaged & awaiting revalidation report
Diltiazem 360mg	ELZ	Sept 2014	\$800	-4.9	<ul style="list-style-type: none"> API investigation delayed production, manufacturing re-starting in July Forecast increase starting October
Dexmethylphenidate	TPM	Oct 2014	\$684	1.3	<ul style="list-style-type: none"> Tentative plan to re-start manufacturing in August
Gabapentin Caps	GOA/FLA	Nov 2014	\$550	-3.2 to 11.7	<ul style="list-style-type: none"> Unreliable TPM supplier, low inventory at transfer of ownership
Clindamycin	GOA/FLA	Oct 2014	\$400	0.8	<ul style="list-style-type: none"> Planning error on forecast cutover date Recovery dependent on transition to new NDC, PV batches complete
Ibandronate Sodium	HAL FAR	TBD	\$350	8.6	<ul style="list-style-type: none"> Batch failure, API failure & low yield impacting supply Product to be TU once inventory is depleted
Metoprolol Succinate	FLA	Oct 2014	\$250	-0.6 to 2.8	<ul style="list-style-type: none"> Intermediate dissolution failure, PT investigation



API Issues

Material	Site	Issue
Acyclovir	TPM	<ul style="list-style-type: none"> Forecast for finished product has increased due to production issues at competitor. Vendor lead times 8-9 months. API available through August to maintain Finished Good safety stock
Butalbital	COR	<ul style="list-style-type: none"> Large forecast increase coupled with transfer to Florida Nov 2014 Transferred material from Florida Site Potential supply disruption Aug – Sept 2014 Working with supplier to obtain additional material, recovery is TBD
Cabergoline	FLA/TPM	<ul style="list-style-type: none"> API and Finished Good inventories will expire/short date end of June 2014 Pfizer identified as new supplier, will require PAS filing Product to be discontinued
Corn Starch (for Minocycline)	GOA	<ul style="list-style-type: none"> New specification of corn starch 9-11% LOD required. Short term - Roquette will select lots with required LOD, August requirements available 7/22 Long term - PT investigation to increase LOD specification Recovery projected for Nov/Dec 2014
Lorazepam	GOA	<ul style="list-style-type: none"> Forecast increases driving increased API demand, Controlled substance with long import permitting process Next deliveries scheduled for August and December. API will be consumed by the end of August resulting FG backorders January – March 2015.
Ramipril	HAL FAR/ FLA	<ul style="list-style-type: none"> OOS assay result from internal and third party testing, not aligned with vendor results For US market, impacting only 1.25mg SKU at this time Impact to finished goods starting July 2014



API Issues

Material	Site	Issue
Nizatidine	GOA	<ul style="list-style-type: none"> ▪ DRL asked to obtain special NOC for supply of API ▪ Working with liaison department to obtain the NOC. ▪ Manufacturing has been delayed, backorder is projected for August. ▪ Recovery in December pending receipt of the NOC.
Podophyllotoxin	TPM	<ul style="list-style-type: none"> ▪ Phenstiehl material - lot testing failure from manufacturer. ▪ New pre-ship samples have passed, API delivery expected in September 2014 ▪ Finished good impact starting June 2014, affects Brand/AG gel & solution
D Amphetamine	ELZ	<ul style="list-style-type: none"> ▪ Awaiting response from DEA on additional quota request, response expected by mid/late August ▪ Currently enough API to cover FG through early November
Tamoxifen	FLA	<ul style="list-style-type: none"> ▪ Forecast increased due to market shortage ▪ Supplier unable to deliver orders needed from January 2015 thru June 2015. ▪ Pending alignment to conditional PO small scale, unapproved additional material ▪ FG backorder projected for the November and May – July 2015
Vancomycin	TPM	<ul style="list-style-type: none"> ▪ Finished Good potency issue due to API dating, reduced API & FG expiration dating ▪ Current API inventory supports finished good requirements through Jan 2015 ▪ Next API delivery is scheduled for Nov 2014





SUMMARY

PEOPLE·PRODUCTS·COMPANY

- Next S&OP meeting – August 28th
- Action Items to Note
- Escalation Items

