

To: Jeffrey Blickman[jblickman@theranos.com]
From: Sharada Sivaraman
Sent: Tue 8/13/2013 8:59:05 PM
Importance: Normal
Subject: RE: demo workflow
Received: Tue 8/13/2013 8:59:06 PM

Hi Jeff,

The ELISA team is running thyroid panel for all 6 samples.

Sharada

=====

PRIVILEGED AND CONFIDENTIAL COMMUNICATION

IMPORTANT – This electronic transmission, and any files transmitted with it are confidential and/or legally privileged information. This information is intended solely for the use of the individual or entity to which they are addressed. Any disclosure, retransmission, reproduction, dissemination or other use of the contents of this information by persons or entities other than the intended recipient is strictly prohibited. If you have received this email in error, please contact us immediately and delete all copies. Please note that any views or opinions presented in this email are solely those of the author and do not necessarily represent those of Theranos, Inc. Finally, before opening or using attachments the recipient should check this email and any attachments for the presence of viruses. Theranos, Inc. accepts no liability for any damage caused by any virus transmitted by this email. Our sole responsibility is limited to resupplying any affected attachments.

Theranos, Inc., 1601 S. California Ave, Palo Alto, CA 94304
650-838-9292 www.theranos.com

=====

From: Jeffrey Blickman
Sent: Tuesday, August 13, 2013 1:41 PM
To: Nicholas Haase; Daniel Edlin; Daniel Young; Paul Patel; Chinmay Pangarkar; Sharada Sivaraman; Tina Noyes; Matthew Black; Nishit Doshi; Rose Edmonds; Xinwei Sam Gong; Sarah Cabayan; Kwesi Mercurius; Prasad Gawande
Cc: Christian Holmes
Subject: RE: demo workflow

Can someone please confirm for me which panels (and subsequent tests) are being run for each sample. It's my current understanding that the same panels/tests are being run on all samples, but need this info as soon as able so we're prepared to can load results into the LIS.

Thanks,

Jeff

From: Nicholas Haase
Sent: Tuesday, August 13, 2013 1:00 PM
To: Daniel Edlin; Daniel Young; Paul Patel; Chinmay Pangarkar; Sharada Sivaraman; Tina Noyes; Matthew Black; Nishit Doshi; Rose Edmonds; Xinwei Sam Gong; Sarah Cabayan; Kwesi Mercurius; Prasad Gawande
Cc: Jeffrey Blickman; Christian Holmes
Subject: RE: demo workflow

Update: We just started the Advia run of all samples.

From: Daniel Edlin
Sent: Tuesday, August 13, 2013 12:36 PM
To: Nicholas Haase; Daniel Young; Paul Patel; Chinmay Pangarkar; Sharada Sivaraman; Tina Noyes; Matthew Black; Nishit Doshi; Rose Edmonds; Xinwei Sam Gong; Sarah Cabayan; Kwesi Mercurius; Prasad Gawande
Cc: Jeffrey Blickman; Christian Holmes
Subject: RE: demo workflow

Once your respective results are ready, please send them Daniel Young.

Thanks everyone

From: Daniel Edlin
Sent: Tuesday, August 13, 2013 12:11 PM
To: Daniel Edlin; Nicholas Haase; Daniel Young; Paul Patel; Chinmay Pangarkar; Sharada Sivaraman; Tina Noyes; Matthew Black; Nishit Doshi; Rose Edmonds; Xinwei Sam Gong; Sarah Cabayan; Kwesi Mercurius; Prasad Gawande
Cc: Jeffrey Blickman
Subject: RE: demo workflow

Please find sample volume recoveries attached.

Sent from my Windows Phone

From: [Daniel Edlin](#)
Sent: 8/13/2013 11:36 AM
To: [Daniel Edlin](#); [Nicholas Haase](#); [Daniel Young](#); [Paul Patel](#); [Chinmay Pangarkar](#); [Sharada Sivaraman](#); [Tina Noyes](#); [Matthew Black](#); [Nishit Doshi](#); [Rose Edmonds](#); [Xinwei Sam Gong](#); [Sarah Cabayan](#); [Kwesi Mercurius](#); [Prasad Gawande](#)
Cc: [Jeffrey Blickman](#)
Subject: RE: demo workflow

We have six samples; please meet in the lab for the hand off

Sent from my Windows Phone

From: [Daniel Edlin](#)
Sent: 8/13/2013 10:53 AM
To: [Nicholas Haase](#); [Daniel Young](#); [Paul Patel](#); [Chinmay Pangarkar](#); [Sharada Sivaraman](#); [Tina Noyes](#); [Matthew Black](#); [Nishit Doshi](#); [Rose Edmonds](#); [Xinwei Sam Gong](#); [Sarah Cabayan](#); [Kwesi Mercurius](#); [Prasad Gawande](#)
Cc: [Jeffrey Blickman](#)
Subject: RE: demo workflow

Hi all – we will be collecting finger stick samples very soon. Please be on standby.

Thanks,

Dan

From: Nicholas Haase
Sent: Tuesday, August 13, 2013 8:40 AM
To: Daniel Young; Daniel Edlin; Paul Patel; Chinmay Pangarkar; Sharada Sivaraman; Tina Noyes; Matthew Black; Nishit Doshi; Rose Edmonds; Xinwei Sam Gong; Sarah Cabayan; Kwesi Mercurius; Prasad Gawande
Subject: RE: demo workflow

That's what I thought, thanks for clarifying.

Nick

From: Daniel Young
Sent: Tuesday, August 13, 2013 8:38 AM

To: Nicholas Haase; Daniel Edlin; Paul Patel; Chinmay Pangarkar; Sharada Sivaraman; Tina Noyes; Matthew Black; Nishit Doshi; Rose Edmonds; Xinwei Sam Gong; Sarah Cabayan; Kwesi Mercurius; Prasad Gawande
Subject: RE: demo workflow

I think it is correct, just not very clear. Here is the upshot:

If 16-18uL: chem8 + lipids

If >18uL: chem 14 + lipids

If <16uL: lipids

From: Nicholas Haase

Sent: Tuesday, August 13, 2013 8:36 AM

To: Daniel Young; Daniel Edlin; Paul Patel; Chinmay Pangarkar; Sharada Sivaraman; Tina Noyes; Matthew Black; Nishit Doshi; Rose Edmonds; Xinwei Sam Gong; Sarah Cabayan; Kwesi Mercurius; Prasad Gawande

Subject: RE: demo workflow

Daniel,

For the condition of there being less than 18 uL EDTA plasma (the bottom row of panes, on the right), wherein we would run just lipids, do you mean that is actually for <16 uL?

Nick

From: Daniel Young

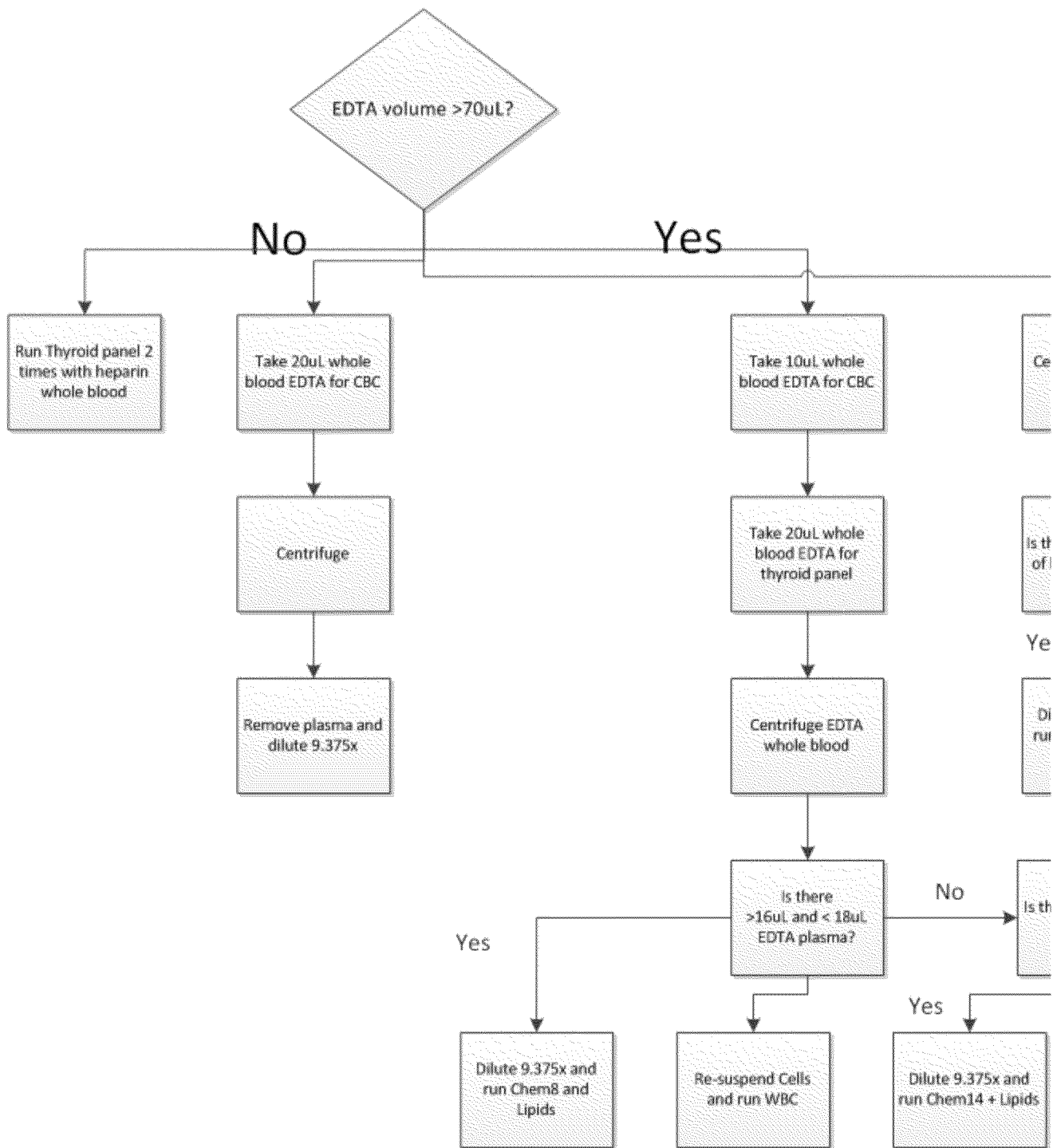
Sent: Tuesday, August 13, 2013 8:14 AM

To: Daniel Edlin; Paul Patel; Chinmay Pangarkar; Sharada Sivaraman; Tina Noyes; Matthew Black; Nishit Doshi; Rose Edmonds; Nicholas Haase; Xinwei Sam Gong; Sarah Cabayan; Kwesi Mercurius; Prasad Gawande

Subject: demo workflow

Importance: High

Please review the attached proposal ASAP, as I likely made a mistake:



Daniel Young, PhD

Vice President, Theranos Systems

Theranos, Inc

1601 S. California Ave

Palo Alto, CA 94304

650-470-6119 (office)

(mobile)

PRIVILEGED AND CONFIDENTIAL COMMUNICATION

IMPORTANT – This electronic transmission, and any files transmitted with it are confidential and/or legally privileged information. This

information is intended solely for the use of the individual or entity to which it is addressed. Any disclosure, retransmission, reproduction, dissemination or other use of the contents of this information by persons or entities other than the intended recipient is strictly prohibited. If you have received this email in error, please contact us immediately and delete all copies. Please note that any views or opinions presented in this email are solely those of the author and do not necessarily represent those of Theranos, Inc. Finally, before opening or using attachments the recipient should check this email and any attachments for the presence of viruses. Theranos, Inc. accepts no liability for any damage caused by any virus transmitted by this email. Our sole responsibility is limited to resupplying any affected attachments.

Theranos, Inc., 3200 Hillview Avenue, Palo Alto, CA, 94304

650-838-9292 www.theranos.com