

██████████ MSFS, CEM, PPS
HR Emergency Management Specialist, Principal
Cell: ██████████

From: ██████████
Sent: Wednesday, July 14, 2021 1:17 PM
To: ██████████
Subject: Wildfire Awareness: Dixie Fire

Team,

This information is being sent proactively to ensure we are aware of emerging conditions in Butte County and in support of safety for our coworkers. Based on recent wildfire activity seen this morning at this link you will find a [Wildfire Response Safety](#) connection for use.

Below are links to information involving an active fire in our North Valley area identified as the Dixie Fire in Butte County. Please support any needed stop work actions, proactively or by order, involving at risk conditions & support local OEC or other emergency response actions. Many local actions are being supported by our external partners as they respond and support this wildfire. We will be initiating proactive LiveSafe (Geo-Fence) and Everbridge notifications to our coworkers in this county. We also have active outage conditions in this area involving both Electric T&D asset levels, current service interruptions can be seen at this [link](#).

As with incidents of this nature, we all have the responsibility to support conversations that do not **speculate on the situation**. We also need to be mindful of social media interaction & posts as employees of PG&E, allow Corp Communications to support all media inquiries and adhere to any potential evidence collection responsibilities that may be asked of us. It is incredibly important that **our actions** support & focus on the safety of our ourselves, our coworkers and the communities we serve. Let's make sure we work together and display discipline in our approaches, thank you for all you do!

- [Alert Wildfire](#)
- [Cal Fire Incident \(Dixie Fire\)](#)

Lastly, we are evaluating extent of condition, **no EOC activation has been agreed to currently**, please remain aware and ready to support any on-call responsibilities. Notification of a needed EOC activation will be supported per process by EP&R accordingly.

Thanks,

EO EOC On-Call,
██████████
PG&E
Sr Director, Wildfire Risk
██████████

Team,

We are tracking an additional fire which includes evacuations. The HAWC provided its update in the link below. HR is waiting for the zip code analysis in order to conduct its impacted personnel report. HR will engage the North Valley OEC leadership when its activated. ██████████ are in the PSPS TTX #2 today so impacted personnel analysis will be conducted by ██████████ today.

██████████ will the same finance order code used for the River Fire be used for employee impacts for the Dixie Fire? Please let me know.

<https://pge.sharepoint.com/sites/EOCResources/EOC%20INCIDENTS/FORMS/ALLITEMS.ASPX?RootFolder=%2Fsites%2FEOCResources%2FEOC%20Incidents%2F2020%20EOC%20Incidents%2F2020%2E08%2E16%20Capacity%20Emergency%20Event%2FPlanning%2FRports%2FEvacuation%20Orders%2F2021%5FEvacuation%20Reports&FolderCTID=0x012000E7E71D6513813C4AA1FA960201F14F8D&View=%7B3645E8A3-A8D2-46E4-8FAB-D519557B4C43%7D>

██████████ MSFS, CEM, PPS
HR Emergency Management Specialist, Principal
Cell: ██████████

From: ██████████
Sent: Wednesday, July 14, 2021 10:18 AM
To: ██████████
Subject: Report #1 (Initial) - Dixie, Oroville, Butte County



Incident Report Number: 1 (Initial)

Date: 07/14/21

Time: 1017

Incident Type: Vegetation

Incident Name: Dixie

Lead Agency: USDA Forest Service/CAPNF - Plumas National Forest / CAL FIRE

Incident Location: HWY 70 [39.874,-121.378](#)

City/Community: Oroville

PGE-DIXIE-NDCAL-000020634

County: Butte
PG&E Division: North Valley
PSS Assigned: [REDACTED]

FIA: 248
Tier: Tier 3
Acreage: 1,200
Containment %: 0
Outages: Yes
Max Customers Impacted: 4
Current Customers Impacted: 3

Current Summary:

The Dixie Fire is approximately 1,200 acres, 0% contained and burning in steep and inaccessible terrain north of Highway 70 and west of Merlin, underneath PG&E's Distribution and Transmission line assets. The fire has come out of the Feather River Canyon bottom and has reached the ridgetop near the Caribou-Table MTN – 230kV lines. The fire is currently burning upslope, upcanyon to the east, northeast and under normal diurnal summertime burning conditions. CAL FIRE is attempting to get ground resources to the ridgetop along the 300 U Line road in an attempt to stop the forward rate of spread using dozers and fixed wing aircraft. This fire is very dynamic and lag time for getting ground resources in place will be the challenge for firefighters.

Last night at 2030 hours, CAL FIRE requested PG&E to deenergize the Bucks Creek 1101 circuit from SSD 941, affecting three customers for firefighter safety. T-line Supervisor [REDACTED] is engaged on-scene working with PSS [REDACTED] SIPT resources are on scene (E-211 and 213) pretreating distribution assets on the Bucks Creek 1101, then later today will begin pretreatment efforts to the west on the Big Bend 1101 from Flea MTN west to the community of Concow. PG&E's GIS Team is working to build a PG&E perimeter map. PSS [REDACTED] will continue to provide remote support for PSS [REDACTED] for reporting purposes as there is little to no communications available in the Feather River Canyon.

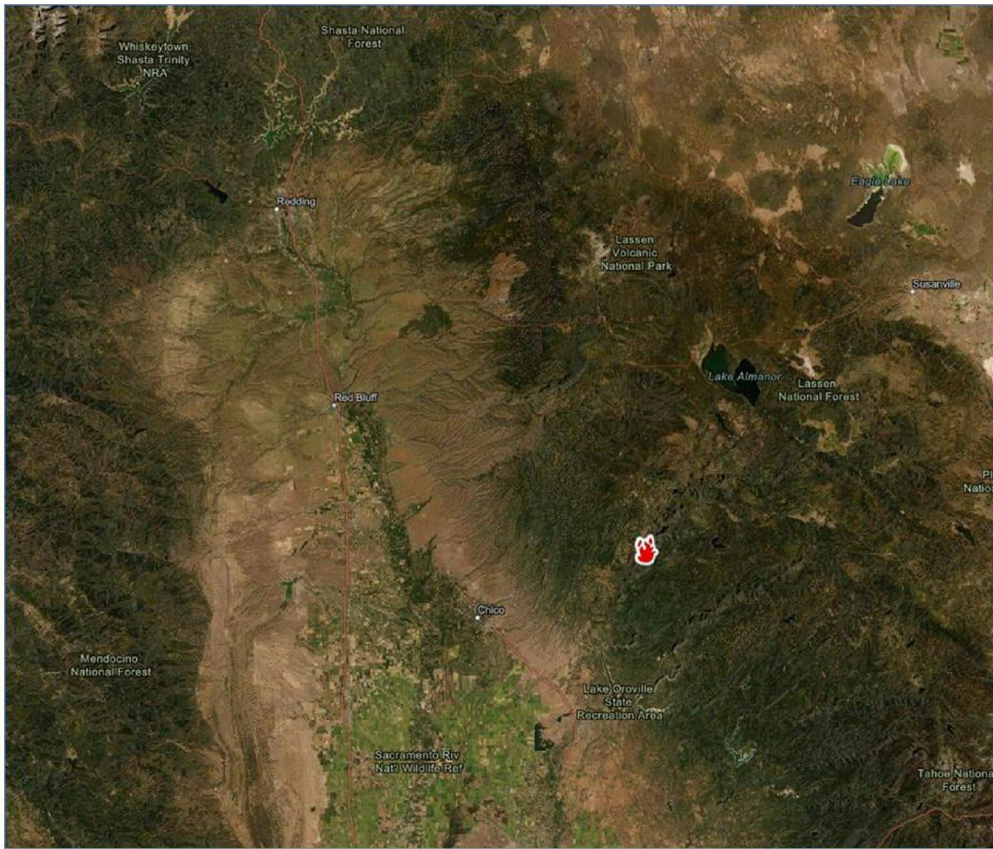
Smoke visible on [multiple wildfire cameras](#).

Assets Potentially at Risk:

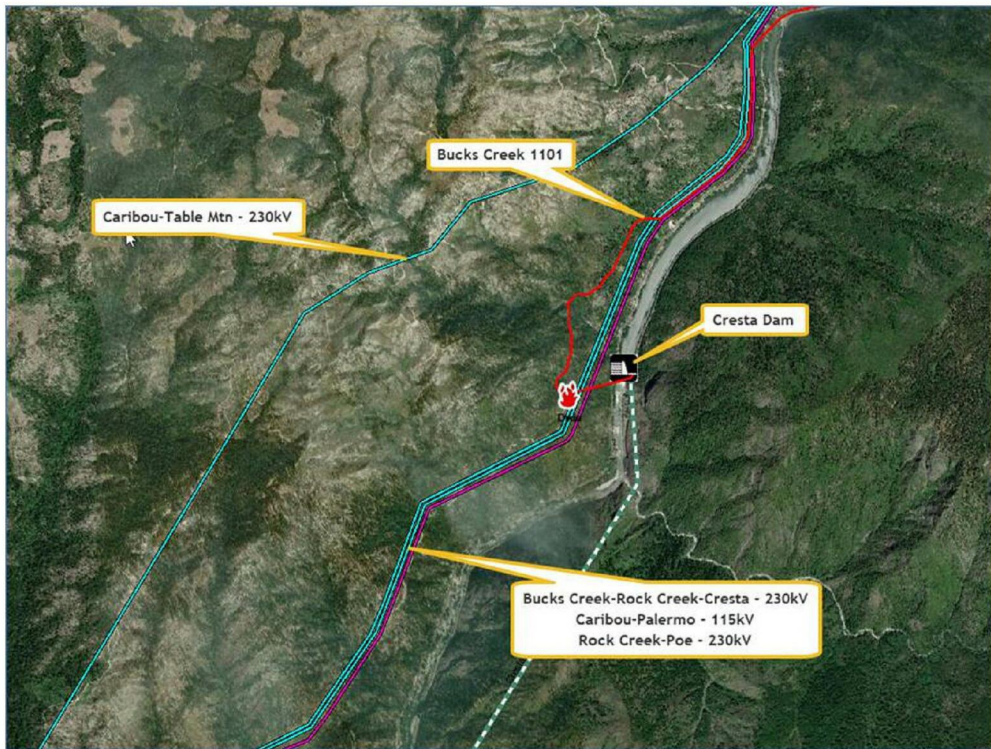
- Distribution: Bucks Creek 1101
- Transmission: Bucks Creek-Rock Creek-Cresta – 230kV, Caribou-Palermo – 115kV, Rock Creek-Poe – 230kV, Caribou-Table Mtn – 230kV
- Gas T and D Line: None at this Time
- Telecom: None at this Time
- Hydro: Cresta Dam
- Others: None at this Time

WSOC Hotline: [REDACTED]

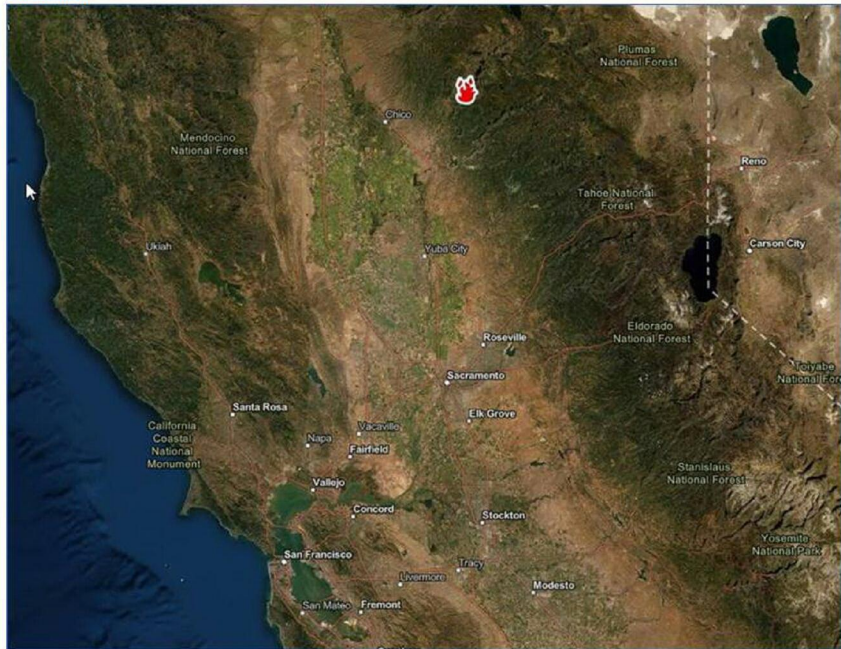
[Overview:](#)



Detail:



Orientation:



Hazard Awareness & Warning Center (HAWC)

24x7 [REDACTED]

To Subscribe to HAWC Incident Reports, please submit request to [REDACTED]

Some of the measures included in this document, email, presentation, or study are contemplated as additional precautionary measures intended to further reduce the risk of wildfires.