

From: [REDACTED]
To: [REDACTED]
Sent: 7/14/2021 12:10:49 PM
Subject: RE: Dixie Fire Information
Attachments: Dixie_overview_07142021_1140.pdf

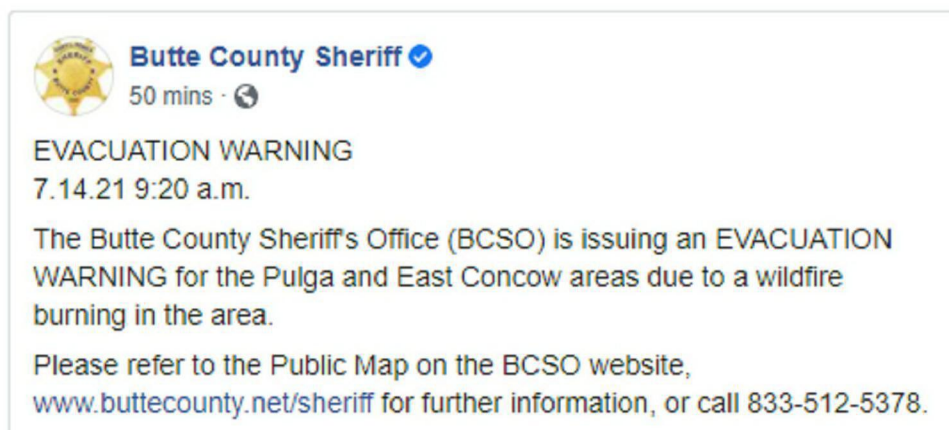
Dixie Fire Map from PG&E.

From: [REDACTED]
Sent: Wednesday, July 14, 2021 10:12 AM
To: [REDACTED]
Subject: RE: Dixie Fire Information

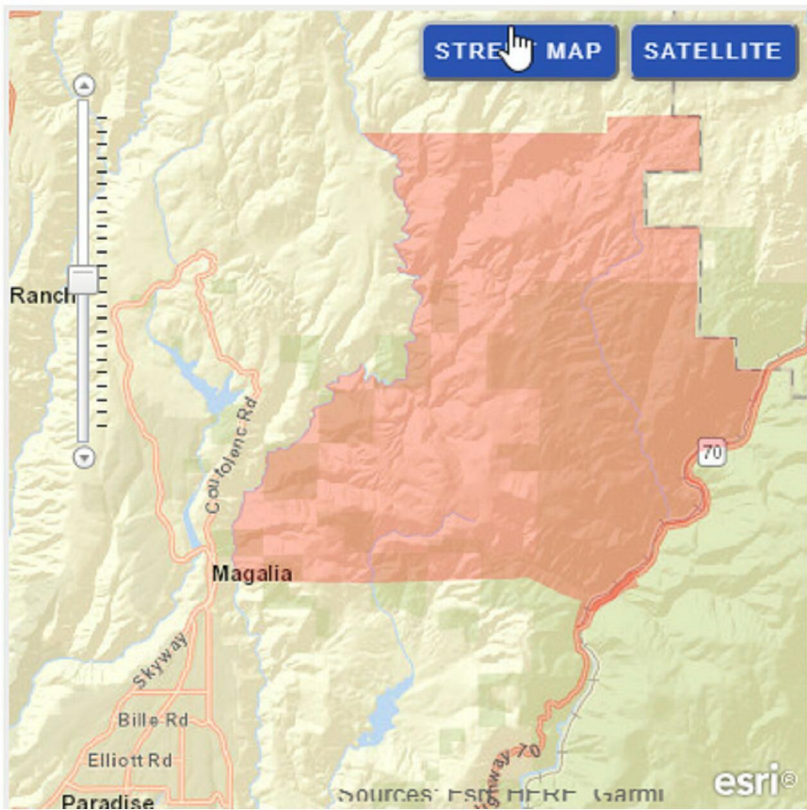
Latest updates from Cal Fire and Butte County. Plumas County Sheriff isn't currently showing any information on the fire.



The screenshot shows two tweets from the verified account 'CAL FIRE Butte Unit/Butte County Fire Department'. The first tweet, posted 27 minutes ago, states that the fire is 1200 acres and burning north away from populated areas, with large resource orders being issued. The second tweet, posted 1 hour ago, reports that the fire is currently 500 acres and 0% contained. Both tweets show engagement metrics such as replies, retweets, and likes.



The screenshot shows a post from the verified account 'Butte County Sheriff'. It is an 'EVACUATION WARNING' issued at 9:20 a.m. on 7.14.21. The text states that the Butte County Sheriff's Office (BCSO) is issuing an evacuation warning for the Pulga and East Concow areas due to a wildfire. It provides a public map on the BCSO website (www.buttecounty.net/sheriff) and a phone number (833-512-5378) for further information.



From: [REDACTED]
Sent: Wednesday, July 14, 2021 9:09 AM
To: [REDACTED]

Subject: RE: Dixie Fire Information



From: [REDACTED]
Sent: Wednesday, July 14, 2021 6:41 AM
To: [REDACTED]

Subject: Dixie Fire Information

Cal Fire's Twitter is calling for a large resource order for today.

https://twitter.com/CALFIRE_ButteCo/status/1415235750249959428?ref_src=twsrc%5Egoogle%7Ctwcamp%5Eserp%7Ctwgr%5Etweet

<https://fireaviation.com/2021/07/14/aircraft-on-the-dixie-fire-in-butte-county-california/>