

From: [REDACTED]
To: [REDACTED]
Sent: 7/14/2021 12:10:49 PM
Subject: RE: Dixie Fire Information
Attachments: Dixie_overview_07142021_1140.pdf

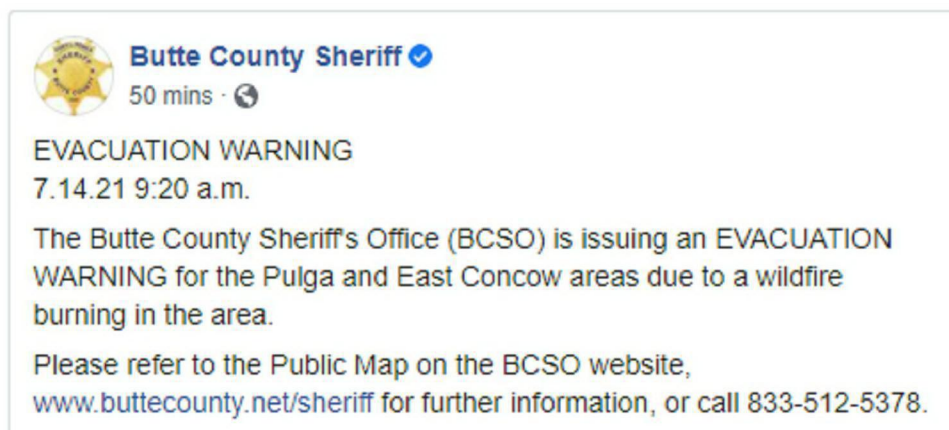
Dixie Fire Map from PG&E.

From: [REDACTED]
Sent: Wednesday, July 14, 2021 10:12 AM
To: [REDACTED]
Subject: RE: Dixie Fire Information

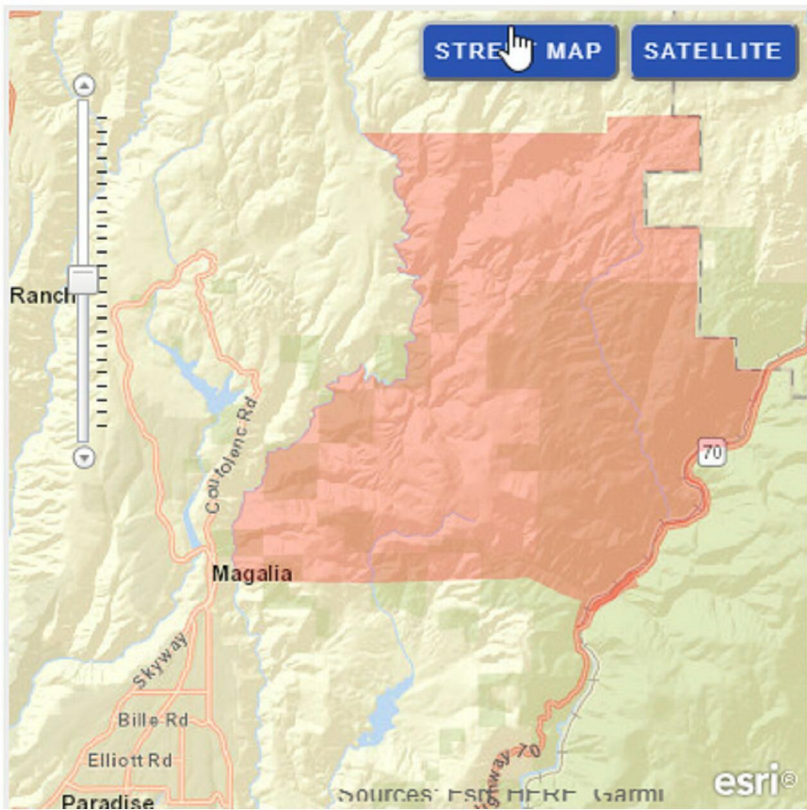
Latest updates from Cal Fire and Butte County. Plumas County Sheriff isn't currently showing any information on the fire.



The image shows two tweets from the account 'CAL FIRE Butte Unit/Butte County Fire Department'. The first tweet, posted 27 minutes ago, contains the text: '#Dixiefire [update]. Fire is 1200 acres, burning to the north away from populated areas. Large resource orders are happening.' It has 10 replies, 50 retweets, and 77 likes. The second tweet, posted 1 hour ago, contains the text: '#Dixiefire [update], The fire is currently 500 acres and 0% contained'. It has 10 replies, 51 retweets, and 75 likes.



The image shows a post from 'Butte County Sheriff' with a verified badge. It is timestamped '50 mins' and includes a globe icon. The text reads: 'EVACUATION WARNING 7.14.21 9:20 a.m. The Butte County Sheriff's Office (BCSO) is issuing an EVACUATION WARNING for the Pulga and East Concow areas due to a wildfire burning in the area. Please refer to the Public Map on the BCSO website, www.buttecounty.net/sheriff for further information, or call 833-512-5378.'



From: [REDACTED]
Sent: Wednesday, July 14, 2021 9:09 AM
To: [REDACTED]

Subject: RE: Dixie Fire Information



From: [REDACTED]
Sent: Wednesday, July 14, 2021 6:41 AM
To: [REDACTED]

Subject: Dixie Fire Information

Cal Fire's Twitter is calling for a large resource order for today.

https://twitter.com/CALFIRE_ButteCo/status/1415235750249959428?ref_src=twsrc%5Egoogle%7Ctwcamp%5Eserp%7Ctwgr%5Etweet

<https://fireaviation.com/2021/07/14/aircraft-on-the-dixie-fire-in-butte-county-california/>