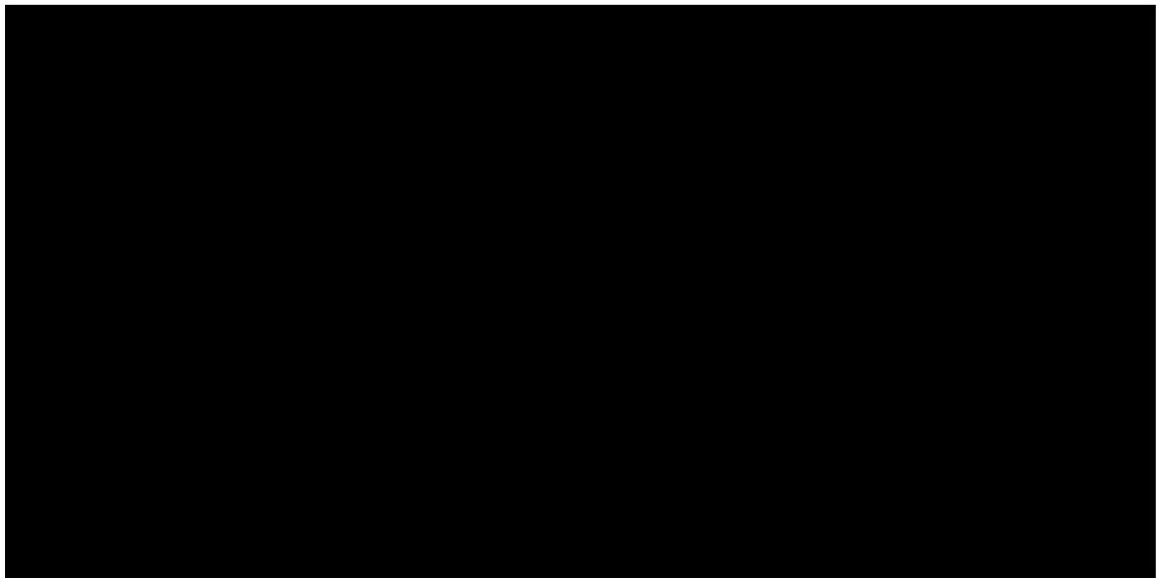


From:

To:



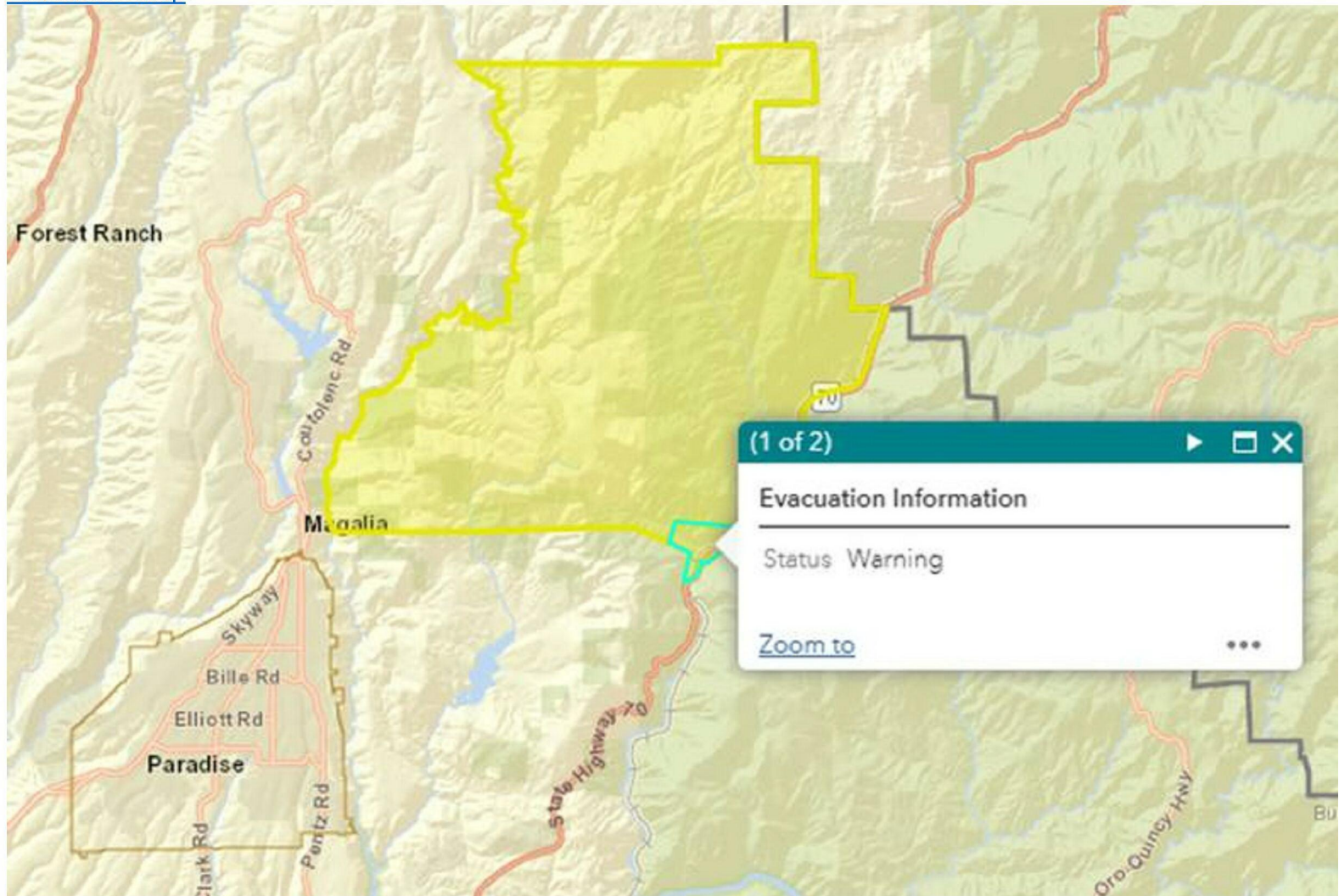
CC:

Sent: 7/14/2021 9:45:06 AM

Subject: RE: Fire observed near hwy 70 @ Cresta Dam

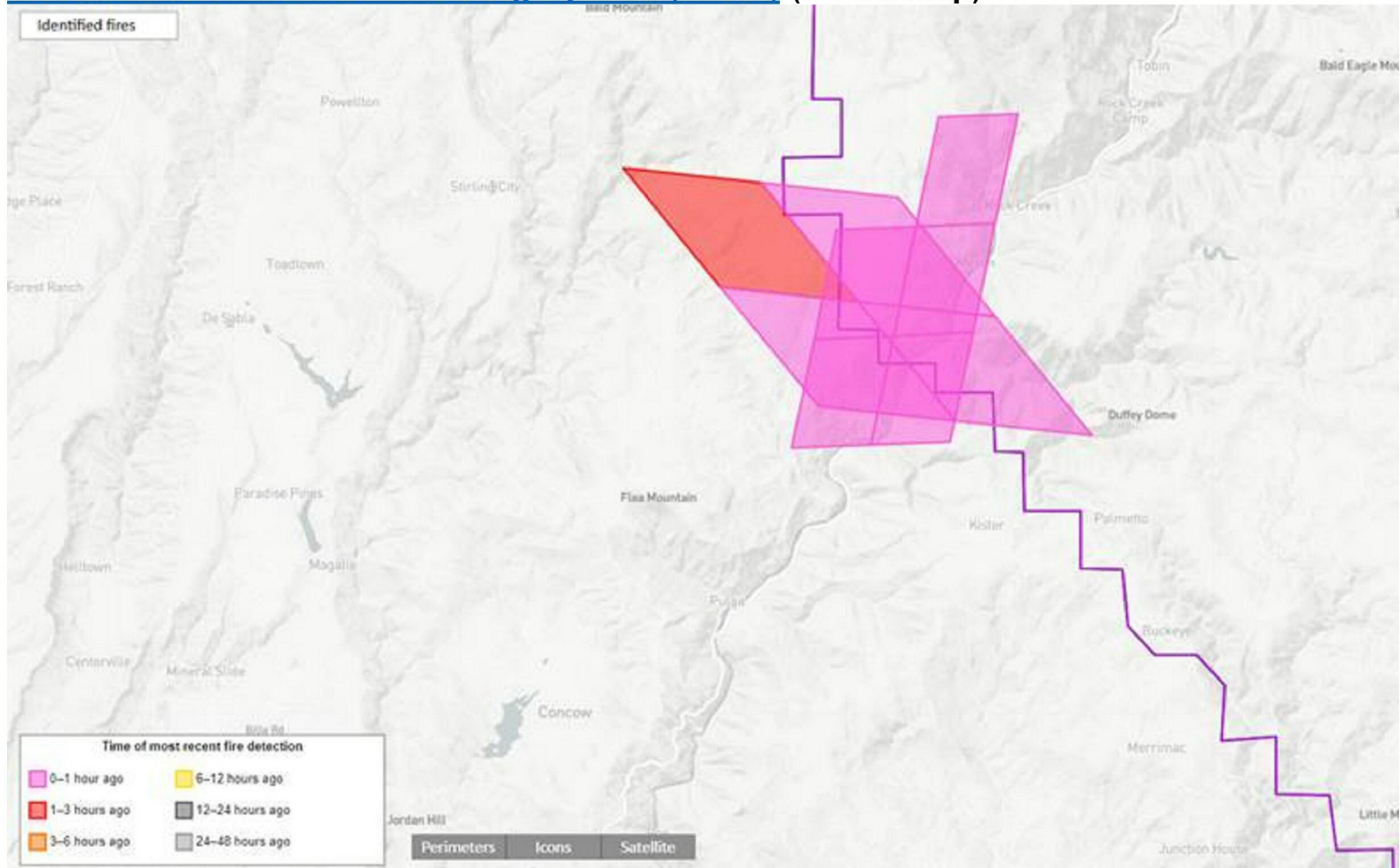
FYI – [#DixieFire](#) now at ~1,200 acres. [Butte County Sheriff](#) issued Evacuation Warning for Pulga area.

[Evacuation Map:](#)



Some other references:

Satellite Fire Detection & Alerting System (FDAS) (PG&E map)



Alertwildfire.org (live cameras)

ALERT Wildfire

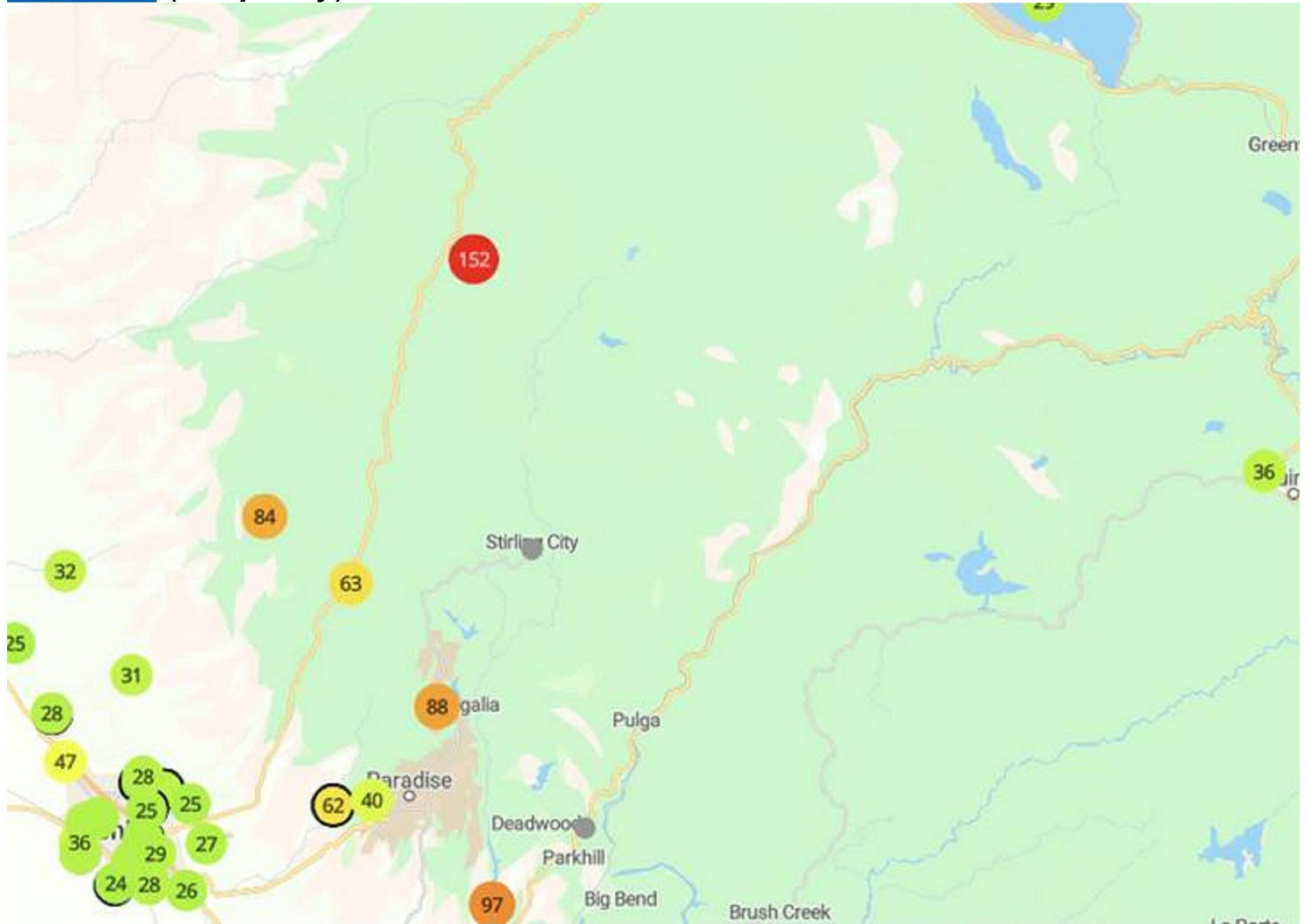
Shasta & Modoc Cameras (report fire start)

IMAGE COURTESY OF PG&E

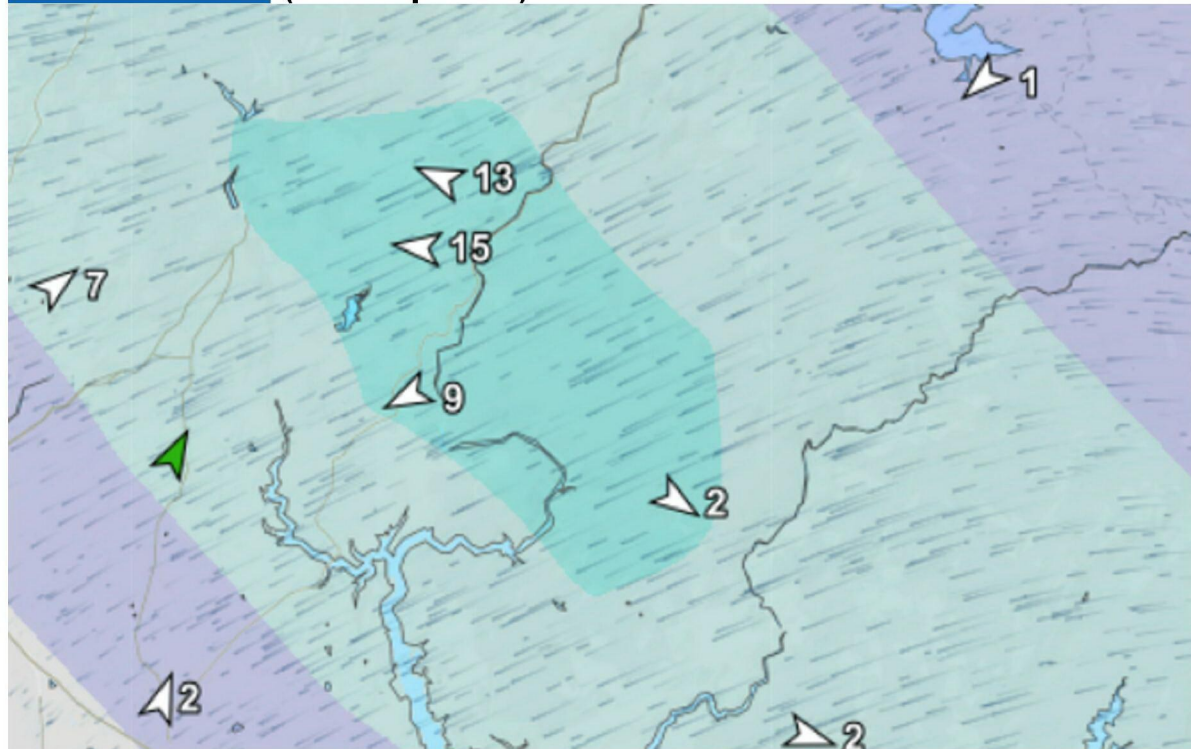
Axis: FleaMtn elev:4268' X:+49.80 Y:+2.18 Z:1.8 PGE_bsmith2_07-14T08:27 © NV Seismo Lab 2021/07/14 08:38:37.05 ALERTWildfire.org

The screenshot shows the Alertwildfire.org website interface. At the top, there is a navigation bar with the 'ALERT Wildfire' logo and links for 'About' and 'Partners'. Below the navigation bar, there is a section for 'Shasta & Modoc Cameras' with a '(report fire start)' link. The main content area is split into two parts: a large live camera feed on the left showing a wildfire with thick smoke rising into the sky, and a map on the right showing the geographic location of the camera. The map includes a scale bar (1 km, 2 km) and a legend. At the bottom of the camera feed, there is a metadata string: 'Axis: FleaMtn elev:4268' X:+49.80 Y:+2.18 Z:1.8 PGE_bsmith2_07-14T08:27 © NV Seismo Lab 2021/07/14 08:38:37.05 ALERTWildfire.org'. The website also features social media icons for YouTube, Facebook, Twitter, and Instagram.

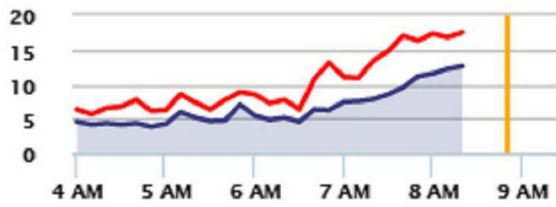
[PurpleAir](#) (air quality)



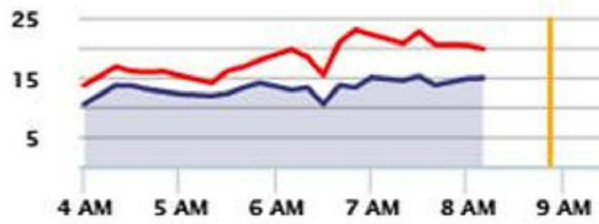
[WindAlert.com](#) (wind speeds)



13 Flea Mountain CA US
 13 (g18) mph ESE 8:20 AM, 77.4°F



15 Concow Road CA US
 15 (g20) mph E 8:10 AM, 72.9°F

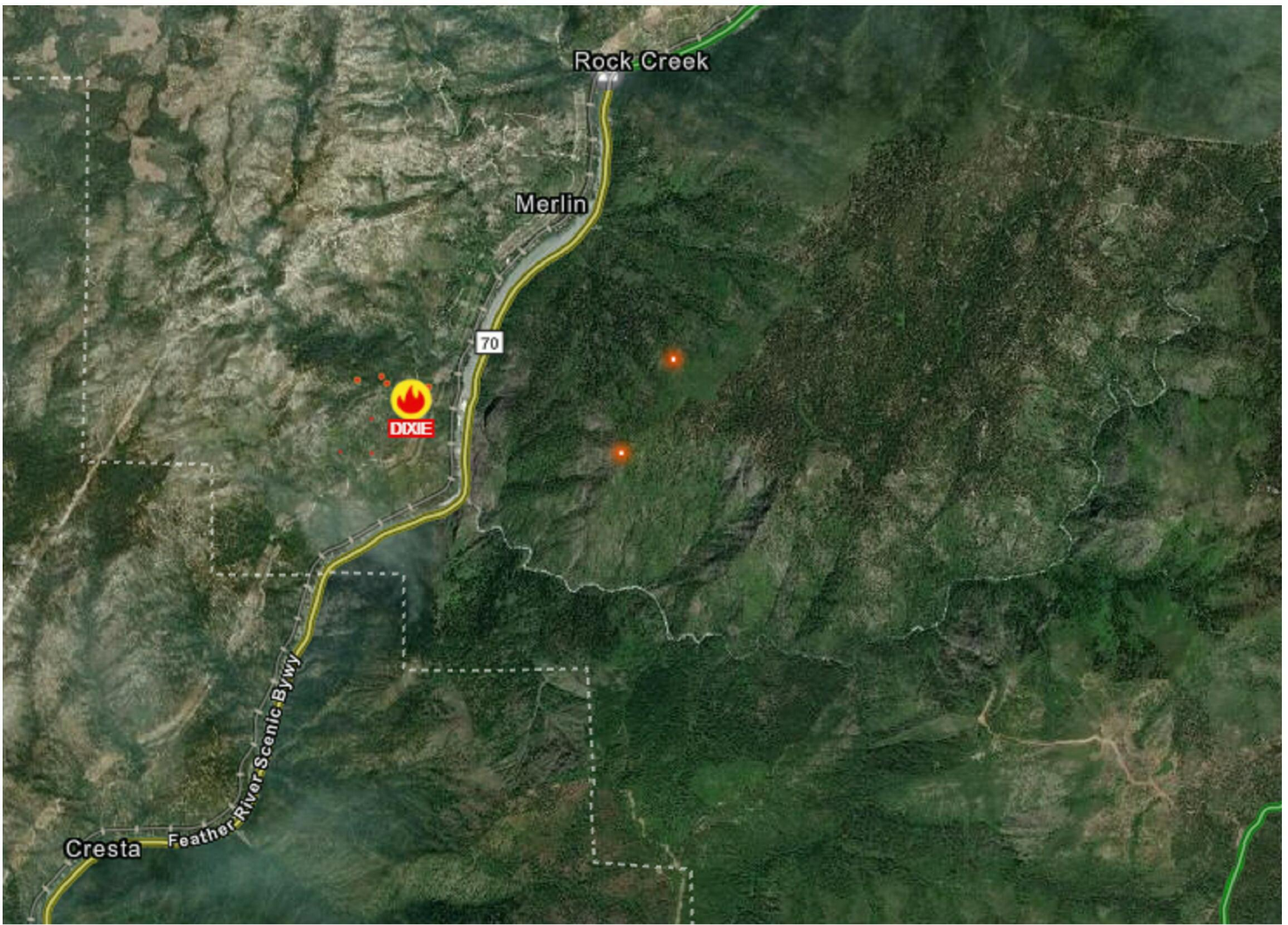


WindAlert Free Forecast

Model: Blend (Quicklook) ▼

		Wed, 14 Jul															
Hour		10AM	11AM	12PM	1PM	2PM	3PM	4PM	5PM	6PM	7PM	8PM	9PM	10PM	11PM	12AM	1AM
Wind (mph)		5	8	9	10	10	10	10	10	8	7	6	5	4	3	3	3
		↗	↗	↗	↗	↗	↗	↗	↗	↗	↗	↗	↗	↗	↖	↖	↖
Gust		7	9	11	12	14	14	14	13	12	11	9	9	8	7	6	6

[Arcgis.com](https://www.arcgis.com) (Hot spot map)



From: [REDACTED]

Sent: Wednesday, July 14, 2021 6:31 AM

To: [REDACTED]

[REDACTED]

Cc: [REDACTED]

Subject: Re: Fire observed near hwy 70 @ Cresta Dam

Bucks Team,

The fire at Cresta Dam and Hwy 70 continues to grow, but thankfully towards the north. No road closures are in place.

We'll continue to update through the day.

I would like the crews at Bucks to take minimal actions prepare the powerhouse for fire. Let's make sure the yard is cleaned up, and the back up generator is fueled.

If you get a chance let your family's know we're monitoring the situation and if 70 is closed sometime today we'll be home late for dinner because it's a long drive around.

See you shortly,

[REDACTED]

Outage Manager, Sr

Sent from iPhone

From: [REDACTED]

Sent: Tuesday, July 13, 2021 9:19:57 PM

To: [REDACTED]

Cc: [REDACTED]

Subject: Fire observed near hwy 70 @ Cresta Dam

Bucks Team. A fire was observed up the hill at Cresta Dam, opposite side of the road. It seemed to be mild and a couple acres. Calfire trucks were there observing. Please be aware of how this might effect your commute to and from the powerhouse tomorrow.

[REDACTED]
Outage Manager, Sr

Sent from iPhone

From: [REDACTED]
Sent: Tuesday, July 13, 2021 8:02:46 PM
To: [REDACTED]

Subject: Bucks PH Outage 2020 Daily Status Report 07/13/2021

Bucks PH Outage 2020 Daily Status Report: July 13, 2021

Safety:

- Fire Index Zone 285: Today – **R4**, Tomorrow – **R4**
- Weather: Sunny, 98* (Storrie, CA). Know symptoms of heat illness and preventative measures

RETURN TO SERVICE

- U2 CAISO RTS : 12/15/2021* (updating to 12/22/2021, rebaseline #4)
- U2 Forecast : 12/22/2021

Administrative and Work Items:

- Rotor Separation Target Date – 7/30
- Trucks & traffic control confirmed for Wednesday for runner transport
- Critical Need – approved rotor repair quality plan & TCB contract (expected Friday)
- Communicate to Inspection Supervisor when night shift is likely to start (tentative Monday)

Work Progress Review:

- GC DeSabra – continuing control room wiring, preparing for 52g-2 delivery
- GC Elec Techs – on hold until more work becomes available for unit 2
- GC Drum – setting up induction heating for removable hub removal, fabricating devices for hub removal
- TCB – mobilization & layout (onsite), stand fabrication (offsite), moved spreader beam
- PM – setting up TCB contract & budget for rotor repair, set up trucking & traffic control for runner move
- Eng – assisting removable hub removal, developing rotor repair quality plan, reviewing rotor/shaft lift plans from TCB

Schedule Lookahead:

- GC DeSabra – receive 52g-2 @ Rodgers Flat, continue control room wiring, review changes to panel 9r
- GC Drum – continue removable hub removal
- TCB – continue mobilization & layout, transport stands to Bucks

Issues:

- Rotor Repair - CAP [121625142](#) – repair contractor mobilizing under FCA, contract in routing. GC removing runners & hub.
- Need to decide the method of removing the shaft & rotor from the unit. TCB submitted two different lift plans for review. This is being worked on by engineering an TCB.
- Several documents are needed before TCB can begin their scope in the rotor repair process.
 - Executed contract (routing)
 - Approved Site Specific Safety Plan (routing)
 - Approved Quality Plan (in development)
 - Approved Lift Plan (under review)
 - Night Inspector (need estimated start date)

(thanks to inspection for pictures)



^Moving Spreader Beam



^Removable Hub Fixture

Thank you,

[Redacted]

Outage Manager Sr
Power Generation, Outage Management

[Redacted]