



SPOT REPORT

FIRE GUARD DETECTION AND ASSESSMENT

COMPILED FROM MULTIPLE SOURCES



Area estimate and graphical depiction is not actual fire perimeter. Acreage is not to be used for official reporting.

Serial: 20210713-2.2-2250

What: Dixie

Confirmed Wildfire

Lat: 39 52.3123
Lon: -121 22.8396

County: Plumas County

Initial Detection:

DPA: STATE

Urban Proximity:
Remote area

Weather:
Temp: 71 RH: 27
WindSpeed: 1 Wind Direction: ENE

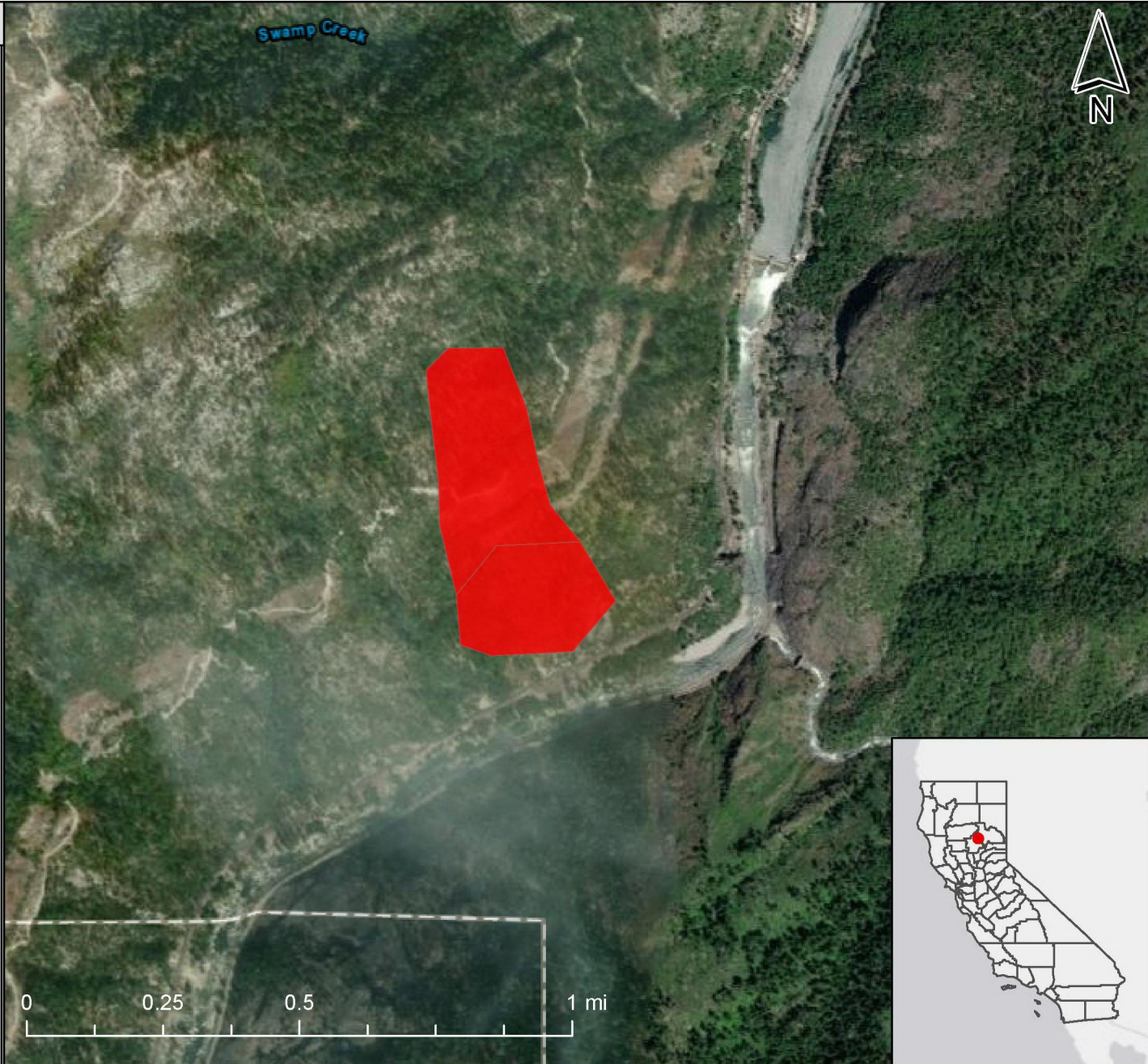
Legend

FireGuard Heat Detection

- within 15 minutes
- 15-30 minutes
- 30-45 minutes
- 45 to 60 minutes
- 1 1/4 to 1 1/2 hours
- 1 to 1 1/4 hours
- 1 1/2 to 1 3/4 hours
- 1 3/4 to 2 hours
- 2 to 24 hours
- Greater than 24 Hours Old

First Heat Detected for an Incident

- First Heat Detected for an Incident



Comments: Confirmed per North Ops