



# SPOT REPORT

FIRE GUARD DETECTION AND ASSESSMENT

COMPILED FROM MULTIPLE SOURCES



Area estimate and graphical depiction is not actual fire perimeter. Acreage is not to be used for official reporting.

**Serial:** 20210713-2.1-2235

**What:**  
 Probable Wildfire  
 Lat: 39 52.1354  
 Lon: -121 22.8406

**County:** Plumas County

**Initial Detection:**

**DPA:** STATE

**Urban Proximity:**  
 Remote area

**Weather:**  
 Temp: 72 RH: 27  
 WindSpeed: 1 Wind Direction: ENE

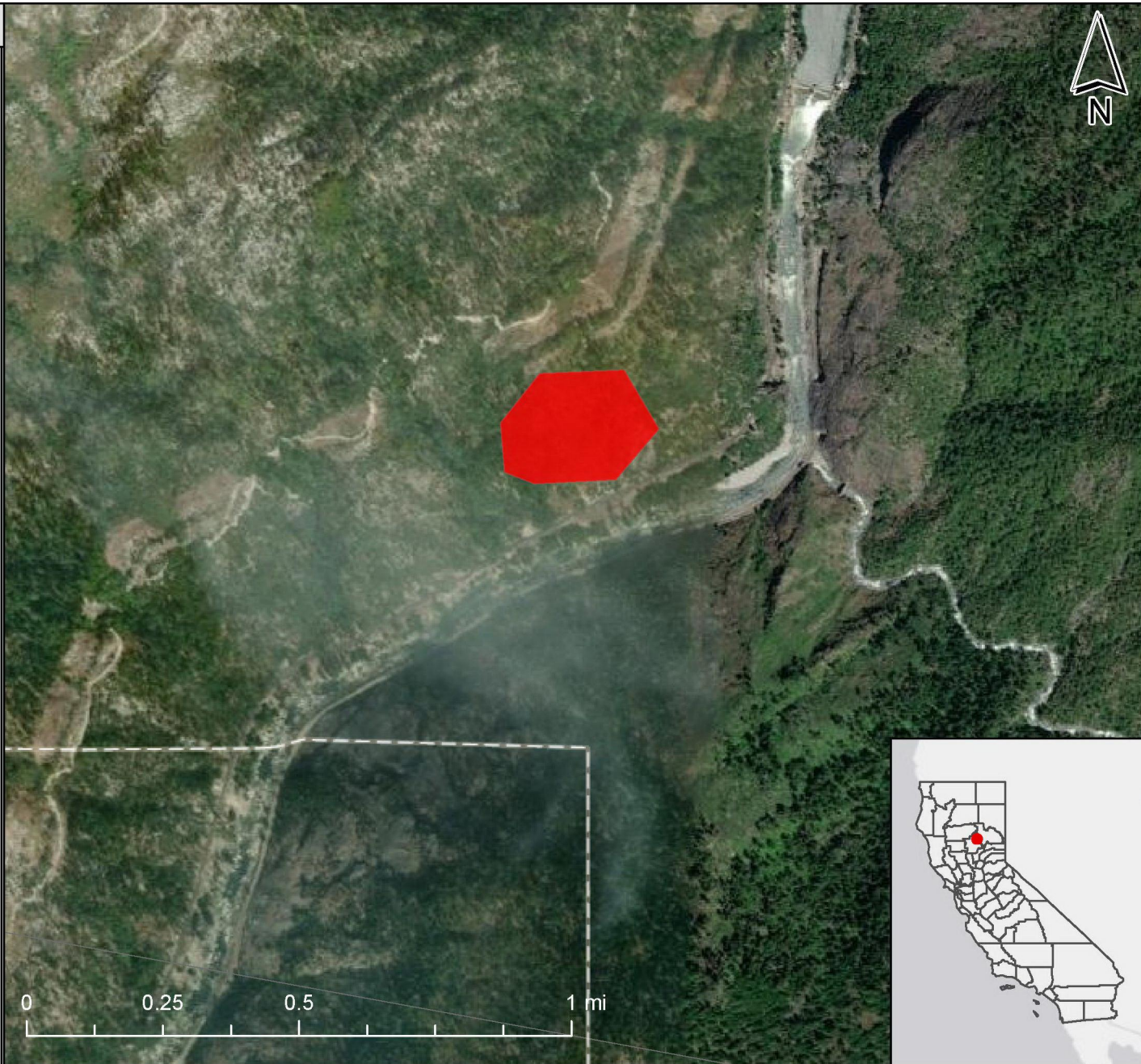
**Legend**

**FireGuard Heat Detection**

- within 15 minutes
- 15-30 minutes
- 30-45 minutes
- 45 to 60 minutes
- 1 1/4 to 1 1/2 hours
- 1 to 1 1/4 hours
- 1 1/2 to 1 3/4 hours
- 1 3/4 to 2 hours
- 2 to 24 hours
- Greater than 24 Hours Old

**First Heat Detected for an Incident**

- First Heat Detected for an Incident



**Comments:** None