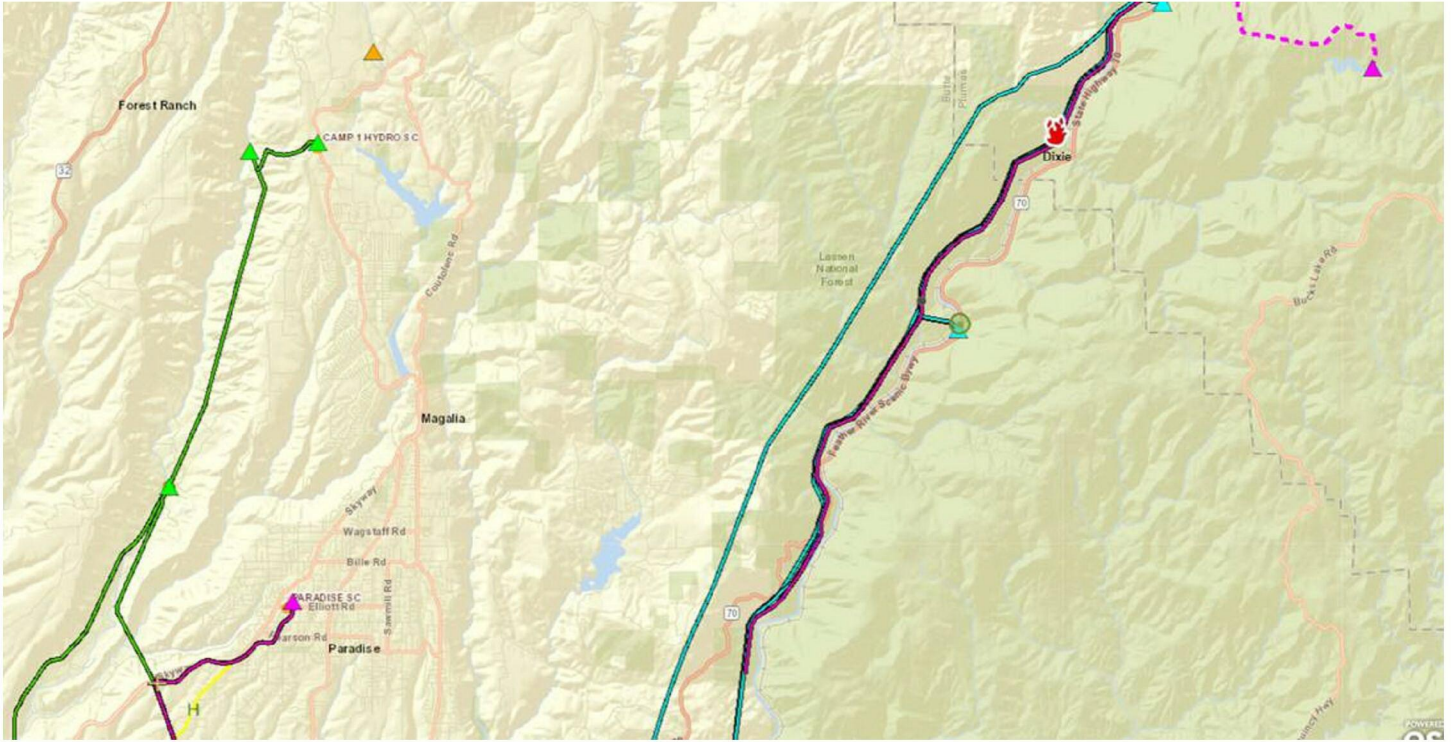


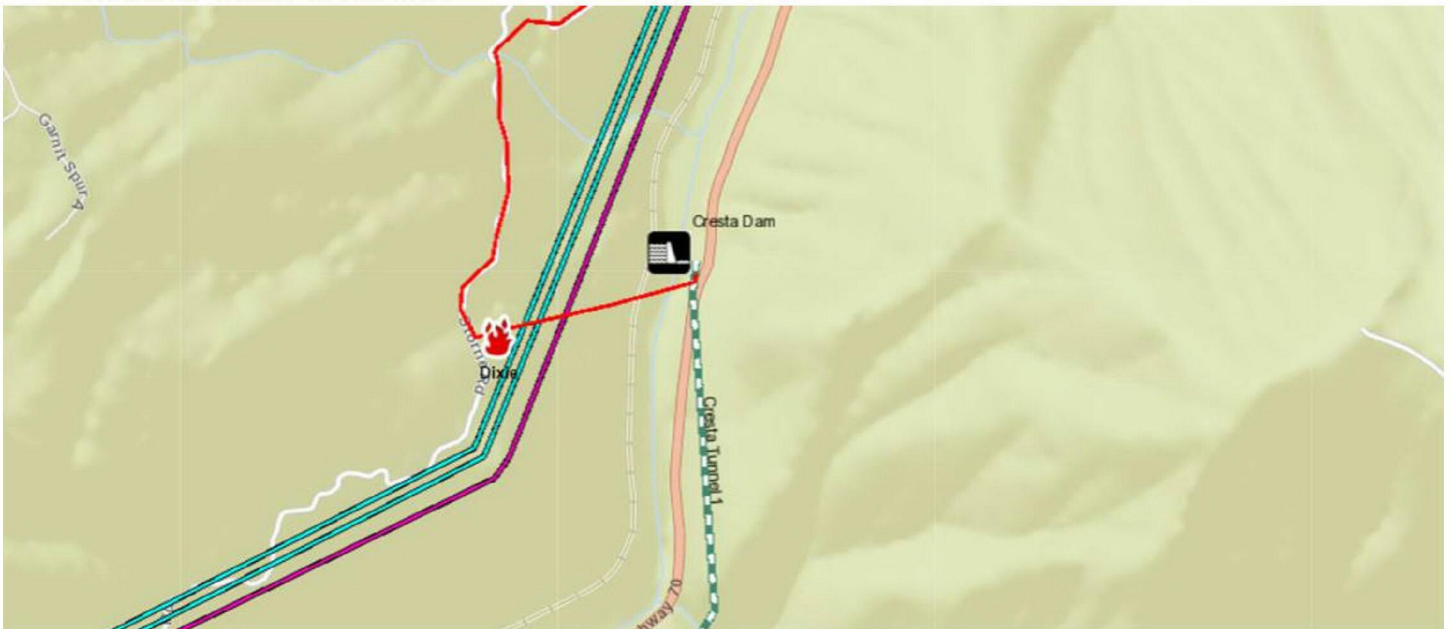
From:  
Sent: 7/13/2021 7:38:19 PM  
Subject:

Maps

- Rock Creek Poe 230 KV
- Bucks Creek-Rock Creek-Cresta 230 KV
- Caribou-Palermo 115 KV



- Red line: Bucks Creek 1101



Director, Wildfire Safety Operations

*Some of the measures included in this email are contemplated as additional precautionary measures intended to further reduce the risk of wildfires.*