

**Preliminary Summary Information as of 2000 7/13: Dixie Fire in Oroville, Butte County, North Valley. Tier 3**

HAWK entry at 1848: Per Twitter information, 1-to-2-acre vegetation fire surrounded by retardant drops and a road. Fire is burning in steep terrain with heavy timber. Per PSS, crews will have to hike in or be flown in. Fire agency equipment is staging. PSS and SIPT E213 are at staging area. Cell coverage is challenging in that area.

Assets in area: Rock Creek-Poe 230 kv line, Bucks Creek-Rock Creek-Cresta 230 kv, Caribous-Palermo 115 kv, Bucks Creek 1101 in the area along with the Cresta Dam. (Twitter)

First IRWIN Time	None	First SM Last Gasp Time	None
First GOES Satellite Time	None	First SM Partial Voltage Time	None
OIS Outage #	None	Distribution SCADA Relay and Alarm Times	None
Max and current customer impacts	None	Transmission SCADA Relay and Alarm Times	None
Acre Size and Containment	1 – 2 acres Containment unknown	Tier	3

Preliminary Summary Information as of 17007/12: Creekside Fire in Cottonwood, Shasta County, North Valley. Tier 2

HAWC Log Entry at 1412: Firefighters on scene of a structure fire with extension to 5 acres vegetation in light flashy fuels moderate rate of spread with multiple structures threatened. Outage originally affecting 1 customer. Possible evacuations needed and IC requesting PG&E to the scene.

Per HAWC report at 1448 – PSS reports forward progress stopped at 15 acres

EI Notified and investigation is in process

First IRWIN Time	1349 7/12	First SM Last Gasp Time	13557/12
First GOES Satellite Time	1356 7/12	First SM Partial Voltage Time	None
OIS Outage #	1402113	Distribution SCADA Relay and Alarm Times	None
Max and current customer impacts	35 Max 3 Current	Transmission SCADA Relay and Alarm Times	None
Acre Size and Containment	15 acres Forward Progress Stopped	Tier	2

Preliminary Summary Information as of 13307/11: Quartz Fire in Sutter Creek, Amado County. Tier 2

HAWC Log Entry at 12:18: Per Broadcastify radio traffic, Firefighters responding to vegetation fire off Quartz Mountain Road East. Fire appears to be burning in timber and brush. Units acknowledging electrical hazard at scene. 664 customers fed of Martell 1101 impacted.

Per HAWC report at 18:09 – IC reports “forward progress stopped”

EII Notified

First IRWIN Time	11227/11	First SM Last Gasp Time	11:15
First GOES Satellite Time	n/a	First SM Partial Voltage Time	None
OIS Outage #	1399414	Distribution SCADA Relay and Alarm Times	
Max and current customer impacts	664 currently impacted	Transmission SCADA Relay and Alarm Times	None
Acre Size and Containment		Tier	2

Preliminary Summary Information as of 16457/11: River Fire in Raymond, Mariposa County. Yosemite Division. Tier 2

HAWC Log Entry at 14:36: Per Broadcastify radio traffic, IC reporting 20-30 acre fire with moderate rate of spread with updated address at Oak Grove Road and Oak Grove School Road. Fuel type is light and flashy and mixed with oak woodland. Topography is rigid and remote

There are structures threatened and evacuations in the immediate area. There are distribution assets off of the Mariposa 2102 inside the fire footprint. A portion has been de-energized for firefighter safety affecting 35 customers (Evacuation orders directed by Madera County Sheriff.

Nearest PG&E asset is Mariposa 2102. 35 customers impacted. No outages reported in OMT. Per ILIS report at 1552, M&C supervisor reports opening switch 7428 per CAL FIRE request due to fire advancing towards tap line.

PSS and M&C leadership are engaged. SIPT is enroute and tman is on site. EII Notified

First IRWIN Time	1411 7/11	First SM Last Gasp Time	1548 7/11
First GOES Satellite Time	1406 7/11	First SM Partial Voltage Time	None at this time.
OIS Outage #	1399513	Distribution SCADA Relay and Alarm Times	None at this time
Max and current customer impacts	35 customers currently out.	Transmission SCADA Relay and Alarm Times	None
Acre Size and Containment	200+ acres with significant spotting to the east 0% containment	Tier	2



**Preliminary Summary Information as of 1900 7/8:** Auburn Fire in Grass Valley, Nevada County. Tier 2

HAWC Log Entry at 17:36: Per Broadcastify radio traffic, IC was reporting power lines are down with a 20' x 20' spot fire. Rate of spread is slow, fuel type is light and flashy with brush and trees, and topography is rolling hills. Fire is bordered by country roads and wildland with structures in the area.

842 customers fed of Grass Valley 1103 impacted.

Per HAWC report at 18:09 – IC reports “forward progress stopped”

EII Notified

First IRWIN Time	1722 7/8	First SM Last Gasp Time	1717 7/8
First GOES Satellite Time	N/A	First SM Partial Voltage Time	None
OIS Outage #	1394869	Distribution SCADA Relay and Alarm Times	1718 7/8 - LR 2110 indicated above minimum to trip (mtt) alarm and locked out.
Max and current customer impacts	842	Transmission SCADA Relay and Alarm Times	n/a
Acre Size and Containment	<1 acre Forward Progress Stopped	Tier	2

**Preliminary Summary Information as of 1630 7/7: Broiler Fire in Redwood Valley, Mendocino County.**

HAWC Log at 15:05: IC is reporting 15 acres in the grass, with structures threatened and moderate rate of spread Fuel type is light and flashy, topography is fairly flat and fire is bordered by paved roads and residential wildland with structures in the area. Fire has grown to 50 acres and the fire has jumped West Road at Uva Drive. Structures are threatened and evacuations have been ordered.

Per ILIS, Line recloser 1204 was opened via SCADA impacting 797 customers. Tman reported fire was burning and needed the line deenergized as fire was in vicinity of our equipment.

EII Notified

First IRWIN Time	1444 7/7	First SM Last Gasp Time	1510 7/7 Still investigating for additional last gasp information
First GOES Satellite Time	1451 7/7	First SM Partial Voltage Time	None
OIS Outage #	1393971	Distribution SCADA Relay and Alarm Times	1510.Opened by DCC. No alarms prior to 1510
Max and current customer impacts	797	Transmission SCADA Relay and Alarm Times	n/a
Acre Size and Containment	50 acres 0% containment	Tier	2

**Preliminary Summary Information as of 1500 6/30: SALT FIRE in Lakehead, Shasta County. North Valley Division**

20 plus acre fire with a rapid rate of spread. Evacuations taking place in area. Northbound I-5 is closed.

Per Trans Sub update, at 13:47 Cragview-Cascade 115 KV line relayed and did not test by design. At 1409 Delta-Mountain Gate JCT 60KV line de-energized per CAL FIRE's request due to fire in area. This de-energization impacted the Antler source resulting in a customer outage impacting 954 customers.

North Valley OEC is activated. PG&E field team responding to support

EII Notified

First IRWIN Time	13:31	First SM Last Gasp Time	14:09
First GOES Satellite Time	13:36	First SM Partial Voltage Time	None
OIS Outage #	1389089	Distribution SCADA Relay and Alarm Times	14:18 CB 1101 opened by DCC. UV alarm at 14:09
Max and current customer impacts	954	Transmission SCADA Relay and Alarm Times	13:47 Crag View-Cascade 115 KV line. AB phase fault
Acre Size and Containment	20 acres (Dynamic!) 0%	Tier	2

Preliminary Summary Information as of 19006/30: Wonderland FIRE in Redding, Shasta County, North Valley Division

HAWC 1803 entry: Per Broadcastify radio, Units on scene are reporting fully involved structure fire into the vegetation, currently 1-2 acres with spotting across the road. Area is composed of flat terrain along the west side of I5 Interstate, primarily grass and brush in the area.

Nearest asset is: STILLWATER 1101, Pipeline Centerlines:402 (Broadcastify)

EII Notified

First IRWIN Time		First SM Last Gasp Time	
First GOES Satellite Time		First SM Partial Voltage Time	
OIS Outage #		Distribution SCADA Relay and Alarm Times	
Max and current customer impacts		Transmission SCADA Relay and Alarm Times	
Acre Size and Containment	2	Tier	



**Preliminary Summary Information as of 2030 6/29: Blue FIRE in Shaver Lake, Fresno County. Fresno Division**

HAWC update at 1710: Per Public Safety Specialist, Fire Agency requested PG&E to shut down line for firefighter safety. Troublemaker deenergized line at 17:46 initially impacting 890 customers off of the Auberry 1101 circuit.

HAWC entry at 2014: Per Public Safety Specialist – Tman and SIPT are on site and reporting an unknown number of poles impacted by the fire. Tman is not currently able to access area. Tman estimates 8 impacted spans.

EII Notified

First IRWIN Time	16:22 6/29	First SM Last Gasp Time	17:46 6/29
First GOES Satellite Time	None	First SM Partial Voltage Time	None
OIS Outage #	1388358, 1388387	Distribution SCADA Relay and Alarm Times	In progress
Max and current customer impacts	890 max 568 current	Transmission SCADA Relay and Alarm Times	N/A
Acre Size and Containment	Unknown acre size and containment	Tier	2

**Preliminary Summary Information:** Wilkinson FIRE, Humboldt Division, Clearlake, Lake County, Tier 2

HAWC update at 1742: Per PSS, potential vehicle fire spread to vegetation and Air Attack reporting structure engulfed. The fire is located at the intersection of Wilkinson and Dam Rd in Clearlake. Evacuations in place in vicinity of fire.

ILIS entry at 1803: Per D troubleman, fire is burning under Transmission lines in area. Wilkinson Fire IC requests de-energization of Highlands 1103 circuit. (ILIS entry is preliminary). T troubleman is enroute.

EII Notified

First IRWIN Time	1706 6/21	First SM Last Gasp Time	1803 6/21
First GOES Satellite Time	1736 6/21	First SM Partial Voltage Time	n/a
OIS Outage #	1381563	Distribution SCADA Relay and Alarm Times	
Max and current customer impacts	2584	Transmission SCADA Relay and Alarm Times	none
Acre Size and Containment	15 acres 50% contained. (unofficial)	Tier	2

**Preliminary Summary Information:** Panoche FIRE, Central Coast Division, Paicines, San Benito County, Tier 2

HAWC initial update at 1351: Resources on-scene of vegetation fire east of 20400 Panoche Rd. IC reporting 5-7 acres rapid spread west with terrain in grassy/woodland fuels with potential for 100-200 acres.

Forward progress was stopped at 100 acres. Fire is currently at 145 acres and 50% contained.

Per email and discussion with GPOM Senior Manager, the fire may have been started by a PG&E vehicle who was working in the area. An investigation team is being formed to investigate this incident.

**Assets in Area:**

- Panoche 1103
- Coburn-Las Aguilas Switching Station-230 KV
- Moss Landing-Las Aguilas Switching Station-230 KV
- Gas Transmission Pipeline Centerlines: B32023 and 300A

EII Notified

First IRWIN Time	1338	First SM Last Gasp Time	N/A
First GOES Satellite Time	1351	First SM Partial Voltage Time	N/A
OIS Outage #	N/A	Distribution SCADA Relay and Alarm Times	N/A
Max and current customer impacts	N/A	Transmission SCADA Relay and Alarm Times	N/A
Acre Size and Containment	145 acres 50% Containment Forward Progress Stopped.	Tier	2

**Preliminary Summary Information:** Pine FIRE, North Valley Division, Happy Valley, Shasta County, Tier 2

HAWC 1404 entry: Vegetation fire reported in area of Happy Valley. IC reporting 15 acres with a moderate rate of spread. Jessup 1101 in the immediate area.

Evacuations: Happy Valley: Cloverdale Road from Heavenly Valley Lane west to Clear Creek Road.

The fire can be seen on Alert Wildfire Cameras Eighthmy and Ducket,

EII Notified

First IRWIN Time	1343	First SM Last Gasp Time	1428
First GOES Satellite Time	1406	First SM Partial Voltage Time	None
OIS Outage #	1383145	Distribution SCADA Relay and Alarm Times	Still assessing
Max and current customer impacts	249	Transmission SCADA Relay and Alarm Times	None
Acre Size and Containment	20 acres 0% contained. (unofficial)	Tier	2



**Preliminary Summary Information:** Swanzy FIRE, North Bay Division, Vallejo, Solano County, Tier 1

Per Broadcastify, veg fire reported in Vallejo by IC with structures threatened. Evacuations requested for Swanzy Ct and the south end of Del Sur

EI Notified

First IRWIN Time		First SM Last Gasp Time	
First GOES Satellite Time		First SM Partial Voltage Time	
OIS Outage #		Distribution SCADA Relay and Alarm Times	
Max and current customer impacts		Transmission SCADA Relay and Alarm Times	
Acre Size and Containment		Tier	1

**Preliminary Summary Information:** PARK FIRE, Chico, Butte County, Tier 2  
Fire was initially reported as 20 acres plus burning down canyon at moderate rate in the Upper Bidwell Park area.

As of fire is now estimated at about 600 acres. Fire did burn under Round Mtn – Table Mtn 500 kV lines. No apparent issues.

SIPT pre-treated approximately 10 D line poles. Per PSS, fire is looking good as of this morning.

EII Notified

First IRWIN Time	2136	First SM Last Gasp Time	None
First GOES Satellite Time	2136	First SM Partial Voltage Time	None
OIS Outage #	None	Distribution SCADA Relay and Alarm Times	None
Max and current customer impacts	None	Transmission SCADA Relay and Alarm Times	None
Acre Size and Containment	600 acres 25%	Tier	3

Preliminary Summary Information: Whittlesey FIRE, Nevada City, Nevada County, Tier 3  
Fire resources responded to vegetation fire initially reported as 1-2 acres at a slow rate of spread with reports of lines down.

As of 0558, PSS reports forward progress stopped at approximately 3 acres.

Per ILIS, tman is on site awaiting approval to access the area and assess damage.

Columbia Hill 1101

EII Notified

First IRWIN Time	0437	First SM Last Gasp Time	0358
First GOES Satellite Time	None	First SM Partial Voltage Time	None
OIS Outage #	1377132	Distribution SCADA Relay and Alarm Times	None
Max and current customer impacts	6	Transmission SCADA Relay and Alarm Times	None
Acre Size and Containment	3 acres Forward Progress Stopped	Tier	3

**Preliminary Summary Information: Beale FIRE** Beale AFB, Marysville, Yolo County, Sierra. Tier 1, but a few miles from Tier 2.

Fire with critical rate of speed and structures potentially being threatened reported. PSS, SIPT, T and D troublemen dispatched to area. Evacuation advisories and warnings only as of 2114.

First IRWIN Time	2024 6/13	First SM Last Gasp Time	na
First GOES Satellite Time	2016 6/13	First SM Partial Voltage Time	Na
OIS Outage #	Na	Distribution SCADA Relay and Alarm Times	Na
Max and current customer impacts	Na	Transmission SCADA Relay and Alarm Times	Na
Acre Size and Containment	150 acres 90% containment	Tier	Tier 1, but within a few miles from Tier 2

<http://beta.alertwildfire.org/northcoast/?camera=Axis-BlackOak>

**Preliminary Summary Information: CREEK FIRE (Rumsey)** Dunnigan, Yolo County, SACRAMENTO. Tier 1

Vegetation fire in the area of County Road 41 and County Road 41A, originally reported as potentially 15 acres moderate rate of spread with structures threatened.

Forward progress stopped. CAL FIRE reports fire at 20 acres as of 2149. Per OIS, CAL FIRE called reporting wires down and tman requested at 2114. T-man is enroute to assess outage tag.

Madison 2101 outage impacting Rumsey and Guinda communities.

First IRWIN Time	1959 6/9	First SM Last Gasp Time	2015 6/9
First GOES Satellite Time	2011 6/9	First SM Partial Voltage Time	None
OIS Outage #	1369788	Distribution SCADA Relay Times	2109 LR lockout time
Max and current customer impacts	148 customers	Transmission SCADA Relay Times	n/a
Containment	Forward progress stopped	Tier	1

<http://beta.alertwildfire.org/northcoast/?camera=Axis-BlackOa>

**Preliminary Summary Information:** Wind driven fire in light flashy fuels fire appears to be burning to the east. Structures impacted with evacuations in place. Nearest assets are the Wheatland 1105 and Smartville-Nicolaus #1 and #2 60kv lines in the area and the Pipeline Center line 202 to the south.

First IRWIN Time	13:58	First SM Last Gasp Time	15:17
First GOES Satellite Time	13:06	First SM Partial Voltage Time	None
OIS Outage #	1368775	Distribution SCADA Relay Times	15:17 LR 248490 opened. Tman requested this action.
Max and current customer impacts	209	Transmission SCADA Relay Times	None
Containment	0%	Tier	1

<http://beta.alertwildfire.org/northcoast/?camera=Axis-BlackOak>

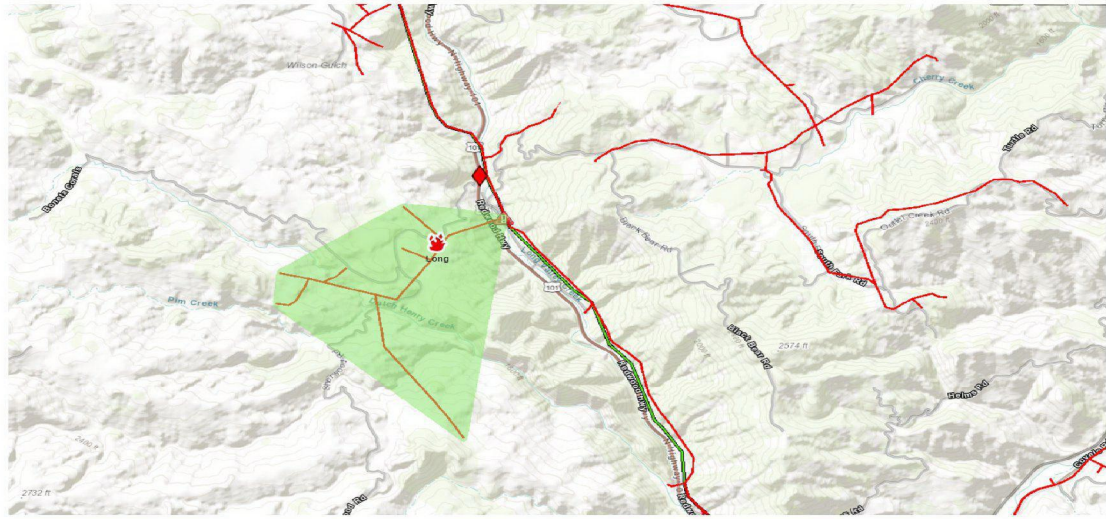
**Buck Fire**

**Preliminary Summary Information:** Per Broadcastify, vegetation fire located at the intersection of Grub Gulch Rd and Road 612. Per Broadcastify, IC reporting power lines down, fire burning in light flashy fuels with oak overstory. Fire has a moderate rate of spread. As of 1616, IC reports fire is at 15 – 20 acres.

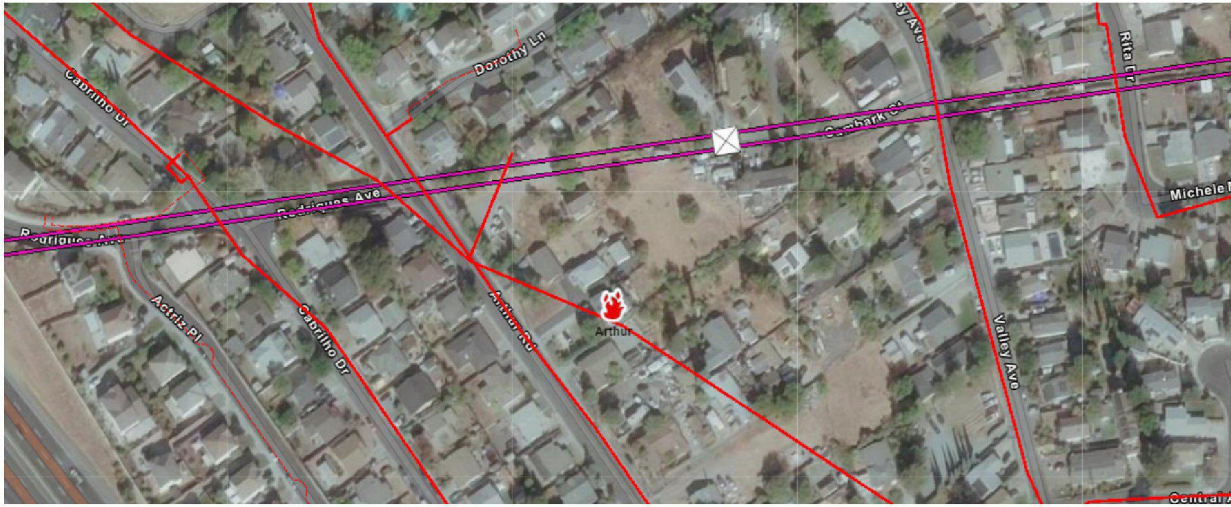
Cameras: <http://www.alertwildfire.org/sierra/index.html?camera=Axis-Deadwood2&v=fd40728>

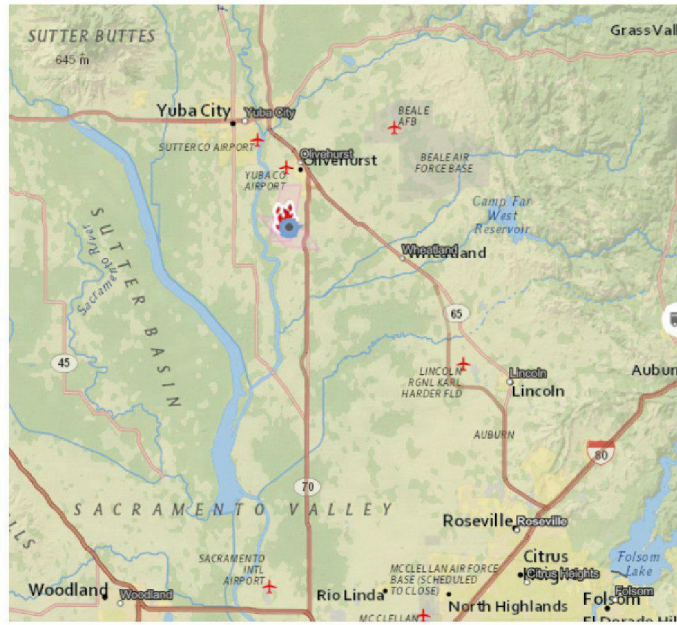
First IRWIN Time	15:11 6/6	First SM Last Gasp Time	15:06 6/6
First GOES Satellite Time	n/a	First SM Partial Voltage Time	None
OIS Outage #	1366985	Distribution SCADA Relay Times	n/a
Max and current customer impacts	80	Transmission SCADA Relay Times	n/a
Containment	0	Tier	2

<http://beta.alertwildfire.org/northcoast/?camera=Axis-BlackOak>



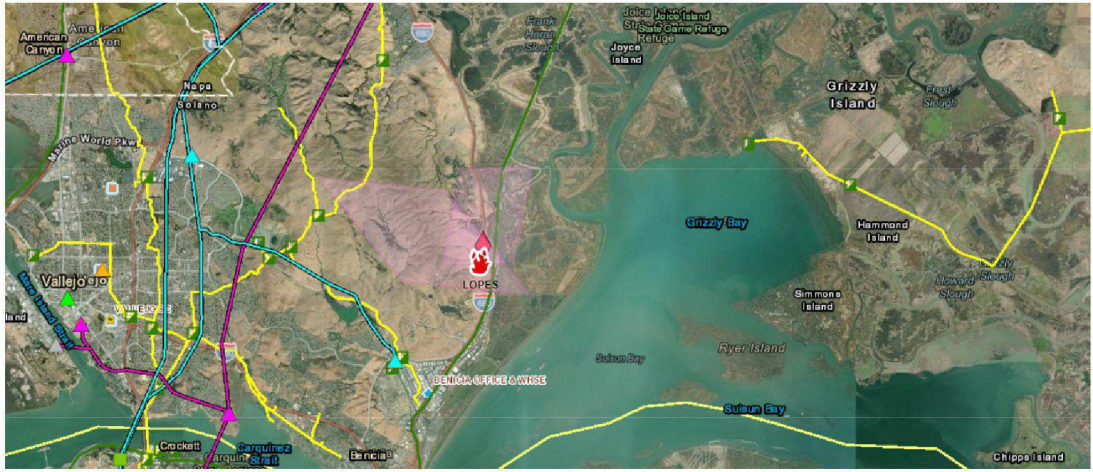






Lopes Fire: Tier 1. Benicia, Solano County. Nearest circuit is Bahia 1102  
 Per Broadcastify report, veg fire in the area of HWY 680 @ Lopes Road. IC reporting 3  
 Ac with a moderate rate of spread to the southeast, up slope. DCC Notified.

First IRWIN Time	5/8 1027	First SM Last Gasp Time	None
First GOES Satellite Time	5/8 1041	First SM Partial Voltage Time	None
OIS Outage #	None	Distribution SCADA Relay Times	None
Max and current customer impacts	None	Transmission SCADA Relay Times	None
Containment	0%	Miscellaneous	Significant media coverage



Cedar Fire: Tier 2. Bella Vista, Shasta County. Cedar Creek 1101  
 HAWC reports per CHP info: Possible powerlines down, multiple spot fires and one that was half acre or more and wind driven, spread to structure, fully involved. Fire confirmed on the Round Mountain Shasta Camera. Forward progress has been stopped. Tman is on site and working with Control Center to isolate.

First IRWIN Time	5/8 0242	First SM Last Gasp Time	5/8 0245
First GOES Satellite Time	N/A	First SM Partial Voltage Time	None
OIS Outage #	1343692 transformer level	Distribution SCADA Relay Times	N/A
Max and current customer impacts	21 customers	Transmission SCADA Relay Times	N/A



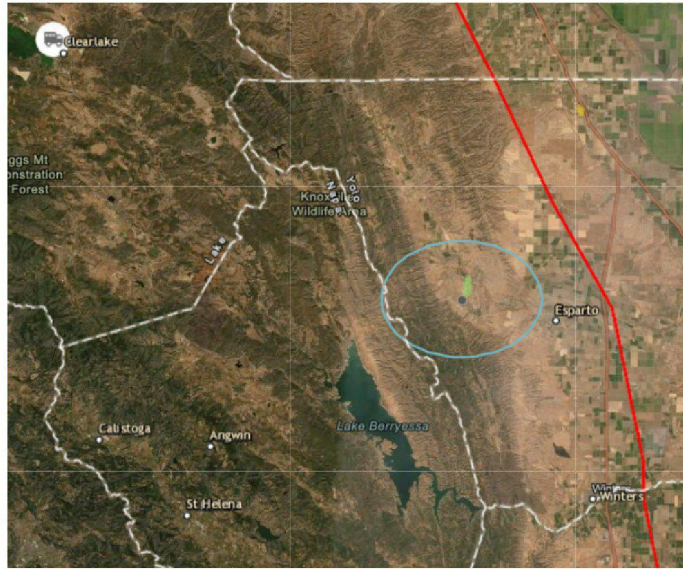


**Veg fire, Not named:**

**Tier 1, Capay, Yolo County, Sacramento Division, Madison 2101**

HAWC reports, based on Broadcastify feed - Vegetation fire in the area of County Road 79 and Highway 16. Initial reports are 5+ acres with powerlines down in the area. Light Flashy Fuels, accessible terrain. Tman reported via FAS tree fell into conductor. He reports 2.5 acre fire with no structure impact. EII notified.

First IRWIN Time	None	First SM Last Gasp Time	01:39
First GOES Satellite Time	None	First SM Partial Voltage Time	01:40
OIS Outage #	1343686. Fuse level	Distribution SCADA Relay Times	n/a
Max and current customer impacts	27 / 27	Transmission SCADA Relay Times	n/a





BLUF:			
First IRWIN Time	None	First SM Last Gasp Time	None
First GOES Satellite Time	None	First SM Partial Voltage Time	None
OIS Outage #	1342158. No customers out. 911 dispatch request	Distribution SCADA Relay Times	None
Max and current customer impacts	0	Transmission SCADA Relay Times	060 . Force Out

**BLUF:**

A brush fire grew to 13 acres this Thursday morning, threatening to spread to boats moored at the Antioch marina. East Contra Costa County firefighters responded to the fire near 1 Marina Place at around 3 a.m. No update on containment. No customers out. Contra Costa-Pittsburg 60kV line forced out of service for safety at 0603 per GCC.

First IRWIN Time	None	First SM Last Gasp Time	None
First GOES Satellite Time	None	First SM Partial Voltage Time	None
OIS Outage #	1342158. No customers out. 911 dispatch request	Distribution SCADA Relay Times	None
Max and current customer impacts	0	Transmission SCADA Relay Times	060 . Force Out

### Partial Voltage Analysis

[http://tableau.comp.pge.com/#/views/DMS\\_PVAnalysis/ILISOutages?iid=1](http://tableau.comp.pge.com/#/views/DMS_PVAnalysis/ILISOutages?iid=1)

---

### ILIS

[http://dodappwlsprd1.cloud.pge.com:8003/ilis\\_rpt/dailyeventlogdetail.jsp?odbeventlogid=21-0054544&numberofmonths=24&showchangehistorylog=1&showoutageremarks=1](http://dodappwlsprd1.cloud.pge.com:8003/ilis_rpt/dailyeventlogdetail.jsp?odbeventlogid=21-0054544&numberofmonths=24&showchangehistorylog=1&showoutageremarks=1)

Contacts:

- [REDACTED]

---

### Distribution SCADA

Contacts:

- [REDACTED]
  - [REDACTED]
-