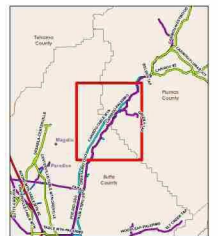


# Dixie Fire Overview

Wednesday, July 14, 2021 11:39:55 AM

PG&E Critical Infrastructure Information Exempt From Public Disclosure Must Be Held in Confidence Facilities to be Operated by PG&E Personnel Only



- PG&E Division
- PO&E Assets
  - Power house
  - Hydro bldg
  - Pole
  - Tower
- Fuse (Operating No. Label in Black)
- Recloser (Operating No. Label in Black)
- Switch (Operating No. Label in Red)
- Telecom Site
- Distribution Poles
- Distribution Transformer

- Electric Transmission
- RATED KV
  - 115 kV
  - 230 kV
- Penstock
- Conveyance
- Tunnels

Incident Data  
 Dixie IR Perimeter, 7/14 05:00

Electric Distribution Feeder:  
 Random Color for Display

