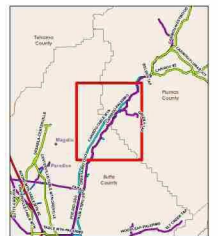


Dixie Fire Overview

Wednesday, July 14, 2021 11:39:55 AM

PG&E Critical Infrastructure Information Exempt From Public Disclosure Must Be Held in Confidence Facilities to be Operated by PG&E Personnel Only



- PG&E Division
- PO&E Assets
- Power house
- Hydro bldg
- Pole
- Tower
- Fuse (Operating No. Label in Black)
- Recloser (Operating No. Label in Black)
- Switch (Operating No. Label in Red)
- Telecom Site
- Distribution Poles
- Distribution Transformer

- Electric Transmission**
- RATED KV**
- 115 kV
- 230 kV
- Penstock
- Conveyance
- Tunnels

Incident Data
 Dixie IR Perimeter, 7/14 05:00

Electric Distribution Feeder:
 Random Color for Display

