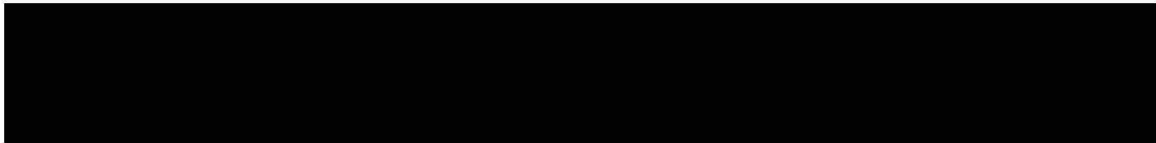


From:



To:

Sent: 7/14/2021 10:12:05 AM
Subject: RE: Dixie Fire Information

Latest updates from Cal Fire and Butte County. Plumas County Sheriff isn't currently showing any information on the fire.



CAL FIRE Butte Unit/Butte County Fire Department  @C... · 27m ...

[#Dixiefire](#) [update]. Fire is 1200 acres, burning to the north away from populated areas. Large resource orders are happening.


10 replies · 50 retweets · 77 likes





CAL FIRE Butte Unit/Butte County Fire Department  @CAL... · 1h ...

[#Dixiefire](#) [update], The fire is currently 500 acres and 0% contained

10 replies · 51 retweets · 75 likes

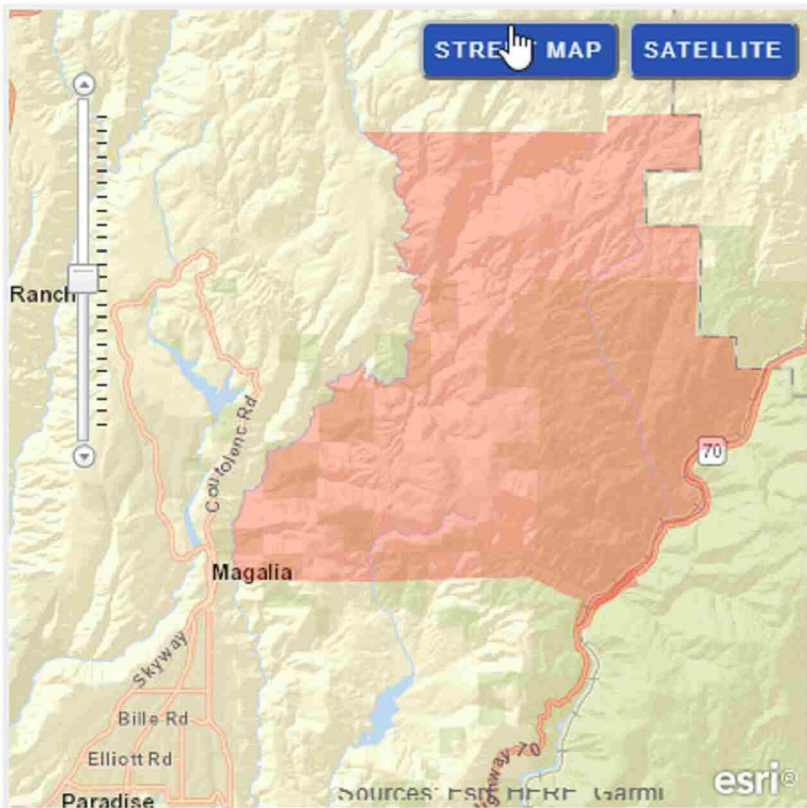


Butte County Sheriff  · 50 mins · 

EVACUATION WARNING
7.14.21 9:20 a.m.

The Butte County Sheriff's Office (BCSO) is issuing an EVACUATION WARNING for the Pulga and East Concow areas due to a wildfire burning in the area.

Please refer to the Public Map on the BCSO website, www.buttecounty.net/sheriff for further information, or call 833-512-5378.



From: [REDACTED]
Sent: Wednesday, July 14, 2021 9:09 AM
To: [REDACTED]

Subject: RE: Dixie Fire Information



From: [REDACTED]
Sent: Wednesday, July 14, 2021 6:41 AM
To: [REDACTED]

Subject: Dixie Fire Information

Cal Fire's Twitter is calling for a large resource order for today.

https://twitter.com/CALFIRE_ButteCo/status/1415235750249959428?ref_src=twsrc%5Egoogle%7Ctwcamp%5Eserp%7Ctwgr%5Etweet

<https://fireaviation.com/2021/07/14/aircraft-on-the-dixie-fire-in-butte-county-california/>