
From: [REDACTED]
To: [REDACTED]
Sent: 7/14/2021 9:20:29 AM
Subject: Update: "Dixie" Fire

Update:

T-line personnel report that the "Dixie" fire is burning between Caribou-Table Mountain 230kV line at tower 27/196 and Rock Creek-Poe 230kV line at tower 1/18. The Bucks Creek-Rock Creek-Poe 230kV line is in the right of way corridor as well. The fire is burning towards and within 200 yards of the Caribou-Table Mountain 230kV line. The fire is moving at a low rate of spread and mostly made up of grass low and is zero percent contained with no current threat to PG&E assets.

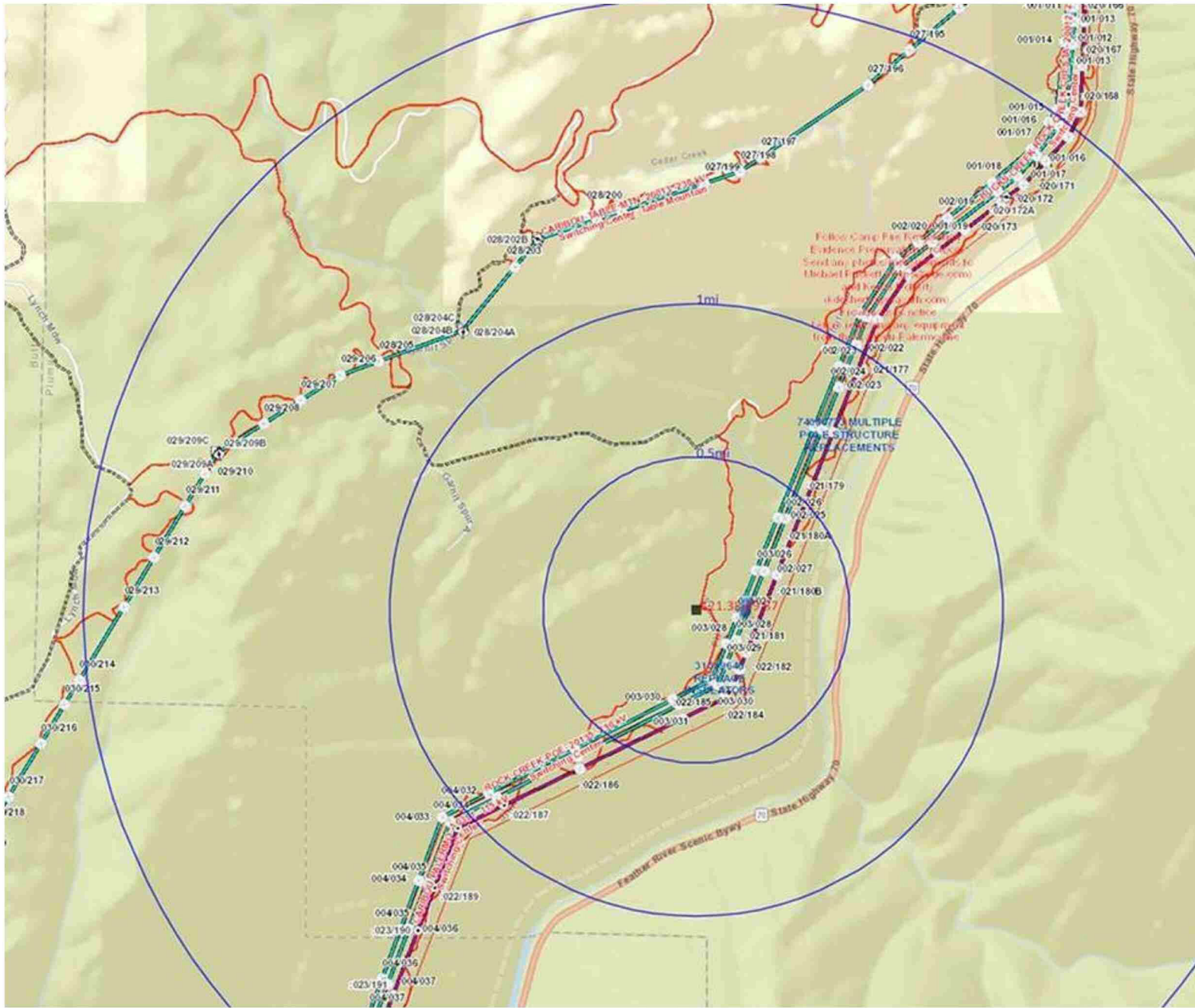
GCC is preparing switching to de-energize and clear the Caribou-Table Mountain 230kV line if needed which will include operating the Caribou 115/60kV system in a controlled island condition. Field personnel are in place to perform set up switching and load transfers as needed.

[REDACTED]
*Senior Transmission System Dispatcher
Vacaville Grid Control Center*



From: [REDACTED]
Sent: Tuesday, July 13, 2021 7:08 PM
To: [REDACTED]
Cc: [REDACTED]
Subject: "Dixie" Fire

2 acre fire near Rock Creek-Poe 230kV line. Winds blowing south towards the lines. Firefighting personnel on site fighting the fire. Personnel have been dispatched.



Operations Supervisor | Pacific Gas & Electric
 GCC | [REDACTED]