

From:

[REDACTED]

To:

CC:

Sent: 7/14/2021 7:23:36 AM

Subject: "Dixie" Fire - OE/ PE Reviews Requested (Possible Forced Caribou Island for 7/14/2021))

Hi [REDACTED]

Per our conversations this morning, please provide Engineering reviews for a possible forced Caribou Island today. Depending upon T-Line's field assessment, the Caribou-Table Mountain 230KV line may need to be de-energized.

[REDACTED]

We have a section of the Caribou-Westwood 60KV line cleared, LMUD is already in an island and Caribou does not have the 60KV Unit #1 available for generation support; Units 2 (ISOC Unit), 3 & 4 are available at this time. Belden is currently on the Caribou-Table Mountain 230KV line. The Marble Tie is open. Collins Pines is taking house power. SPI Quincy is generating.

[REDACTED]

I have notified North Valley Distribution about the potential for a forced Caribou Island and that we will most likely need someone at Spanish Creek to make Temp RLY settings for Spanish Creek CB 72; the Elec Tech is en route and will be on standby at Spanish Creek until further notice. We have SCADA control for Caribou CB 22 & 42 (Group 3), and Hamilton Branch 12 can be remotely adjusted by engineering, to my knowledge.

Please reply to this email with the engineering requirements and give me a call with any questions.

Thank you,

From: [REDACTED]

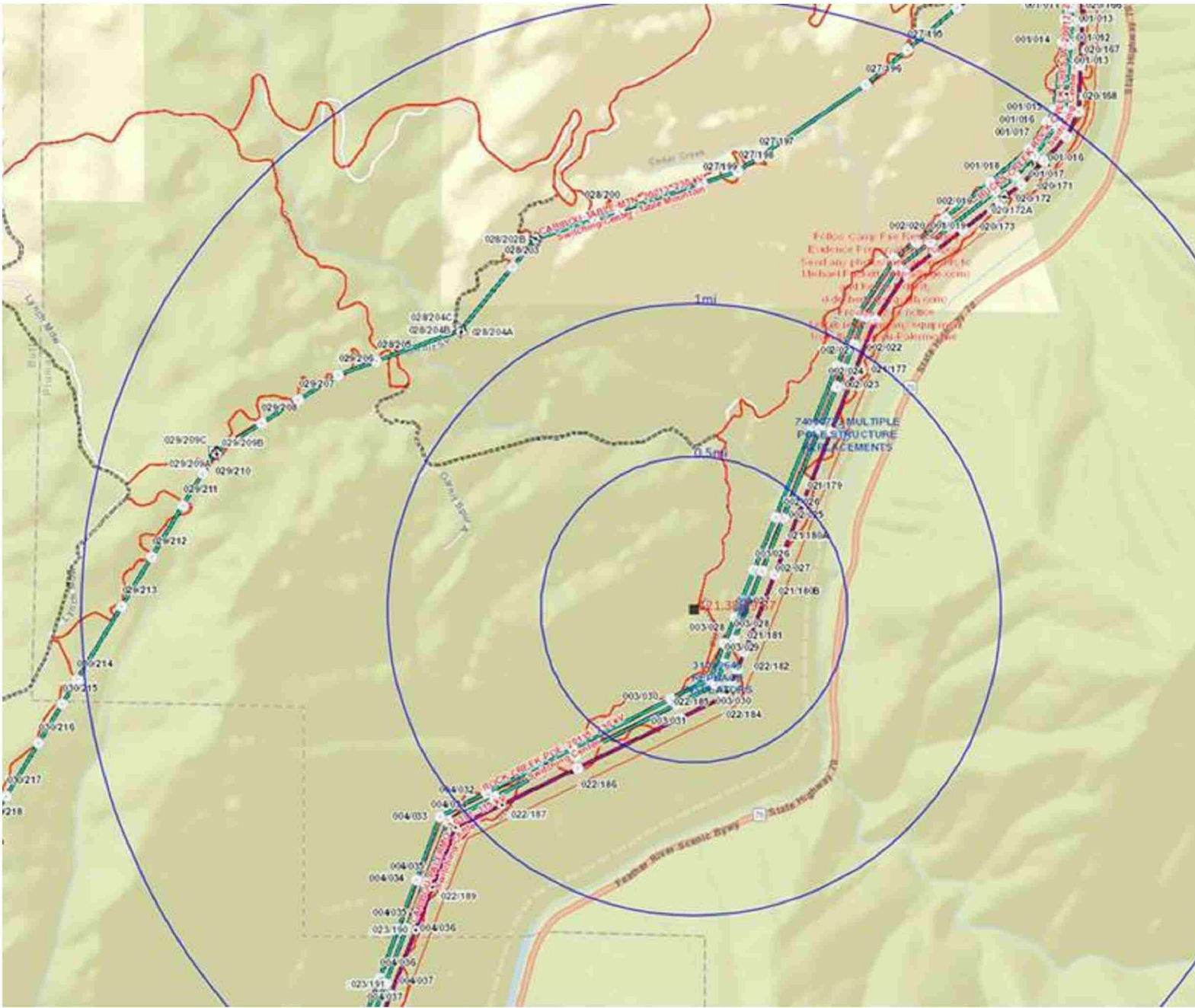
Sent: Tuesday, July 13, 2021 7:08 PM

To: [REDACTED]

Cc: [REDACTED]

Subject: "Dixie" Fire

2 acre fire near Rock Creek-Poe 230kV line. Winds blowing south towards the lines. Firefighting personnel on site fighting the fire. Personnel have been dispatched.



Operations Supervisor | Pacific Gas & Electric
GCC