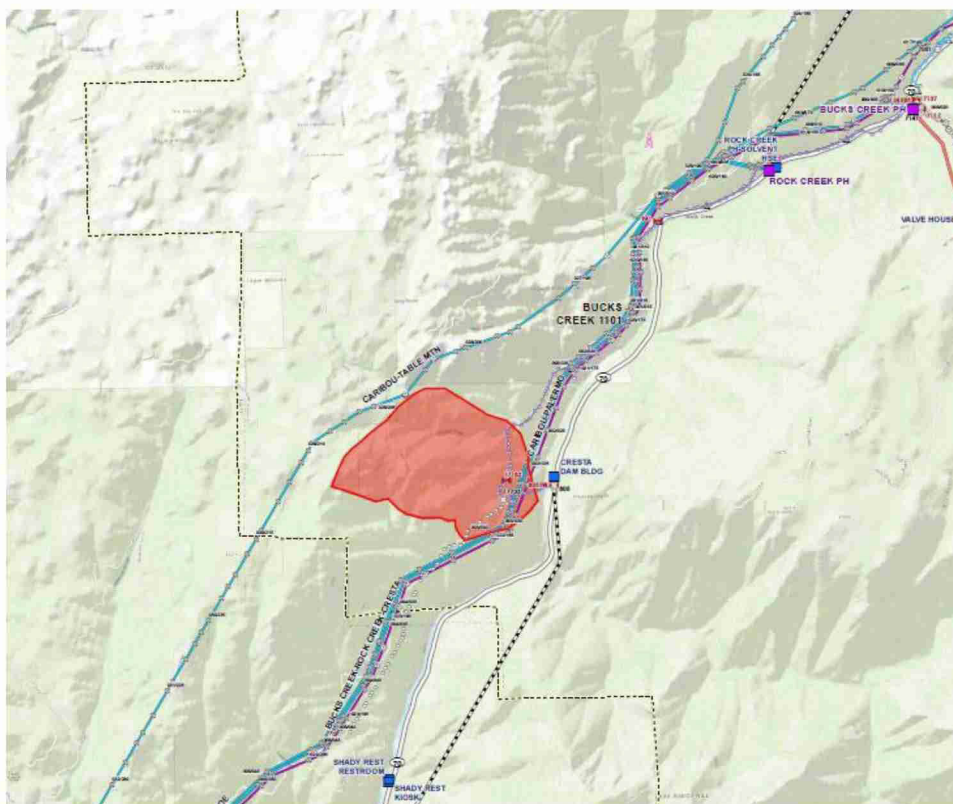


ICS 201

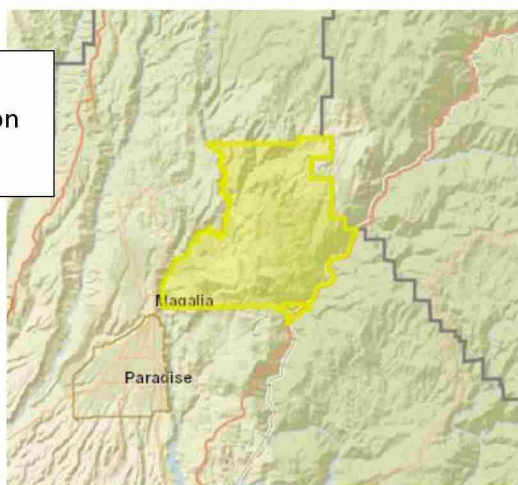
Incident Briefing	1. Incident Name Dixie Fire	2. Date Prepared 7/14/21	3. Time Prepared 1400
--------------------------	---------------------------------------	------------------------------------	---------------------------------

4. Map Sketch or Situational Awareness Information

The Dixie Fire started in an area of North Valley Division just above the Camp Fire perimeter. The fire is currently 1,200 acres and 0% contained. Fire spread is being driven by up canyon daytime winds and spreading to the northeast away from populated areas. Evacuations are in place in the communities of Concow and Pulga.



Current Evacuation area



Internal

ICS 201

ICS 201	Page 1	5. Prepared By [REDACTED]
---------	--------	------------------------------



6. Priorities/Objectives

1. Safety

- a. By 7/14, provide initial incident update to Safety Leadership regarding activation
- b. By, 7/14, develop perimeter for LiveSafe geofence
- c. By 7/14, reset Safety Reporting to support event
- d. By, 7/15, prepare initial Staffing needs to support the Dixie Fire if needed
- e. By 7/15, develop initial Safety Communications for employees

2. Law

- a. No EOC Objectives at this time

3. LNO

- a. Work with Reg Rel to provide any final edits to the CPUC email draft and ensure send
- b. Confirm potential LNO team participation of LPA and State Gov Rel participation for continued EOC activation

4. PIO

- a. Develop message for impacted employees, retirees and contractors to be pushed via Everbridge

5. CSO

- a. By 1800 evaluate staffing needs for the next OP.
- b. In coordination with LNO, by 1200 on 7/15 develop strategy for potential customer support in the field.

6. Operations

- a. Distribution
 - i. By 7/15, identify if all work scheduled in the evacuation zone has been cancelled

Internal

PGE-DIXIE-NDCAL-000018973

ICS 201

- b. Transmission
 - i. By 7/15, identify if all work scheduled in the evacuation zone has been cancelled
 - ii. When access is available, complete patrol of the Caribou/Table Mtn 230Kv fault zone provided by system protection
- c. Veg – [REDACTED] is the lead
- d. Power Gen - Currently there are no Power Generation assets at risk due to the fire.
 - i. Power Generation will support the established island with Caribou powerhouse to maintain power to the customers impacted by the Caribou-Table Mtn. 230

7. Plans

- a. By 7/14, prepare the 201 and the 203
- b. By 7/14 Provide information on potential event scope
- c. By 7/14 Prepare initial maps from the HAWC
- d. By 7/15 Prepare customer impact information and maps, and share with Public Safety Partners
- e. By 7/15 Schedule EOC Ops, C&G and Planning Briefings to get into a predictable operational cadence

8. Logistics

- a. Comms Unit to push Everbridge message once content is approved by EOC Commander
- b. By 1700 7/14 check availability of staffing
- c. By 1700 7/14 Propose activate MTCC
- d. By 1700 7/14 Verify ESP availability to support
- e. By 1700 7/14 determine support needed for local LOGS

9. Finance and Admin

- a. Identify scope of Everbridge message

10. Intel and Investigation

ICS 201

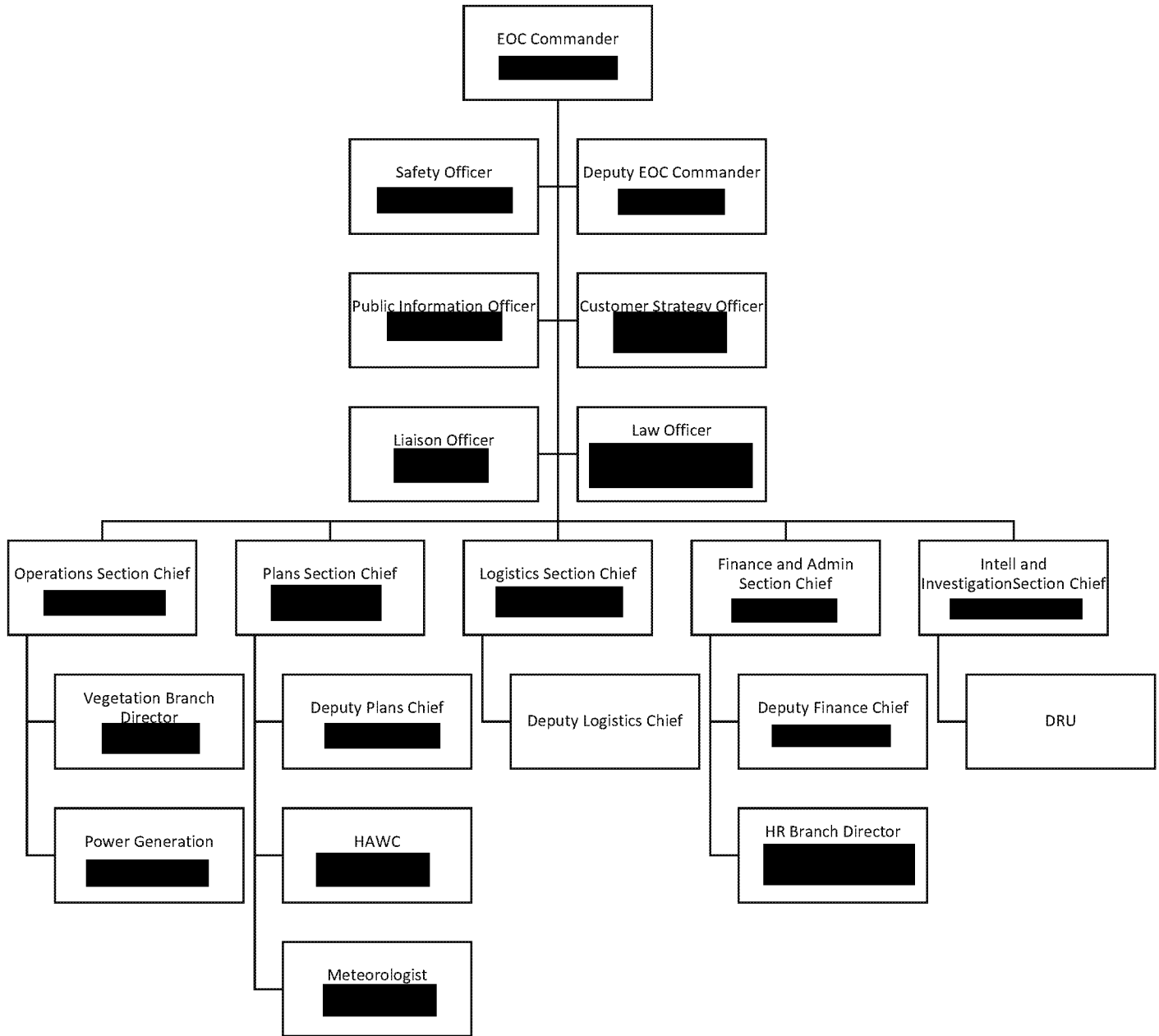
Page 2

7. Current Organization

Internal

PGE-DIXIE-NDCAL-000018974

ICS 201



Internal