

**System Hardening Field Visits**  
**Dec 14-16, 2020**

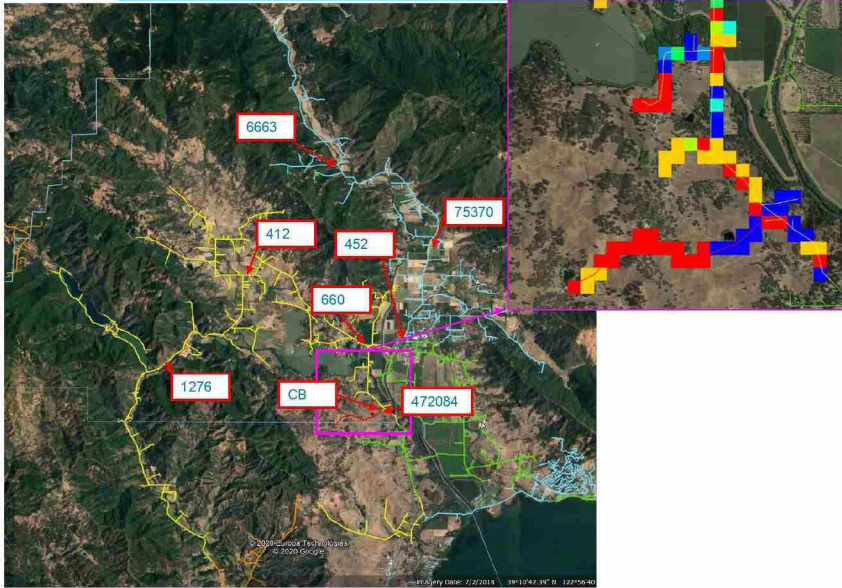
**Finalizing Circuits and contact info**



Together, Building  
a Better California



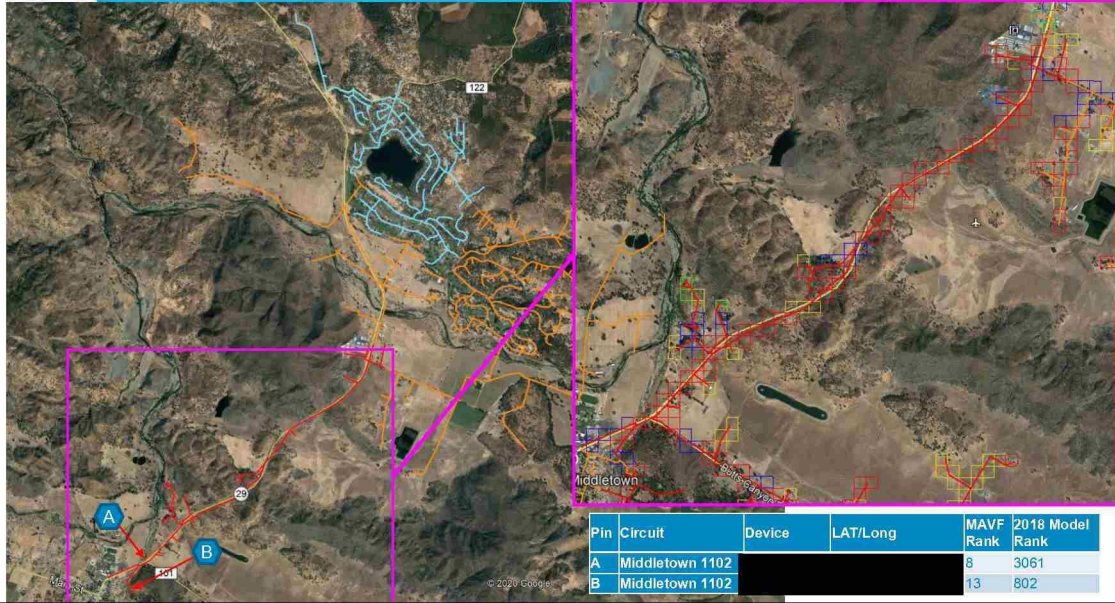
# Upper Lake 1101CB



| Circuit         | Device | Lat/Long | MAVF Rank | 2018 Model Rank |
|-----------------|--------|----------|-----------|-----------------|
| Upper Lake 1101 |        |          | 6         | 1534            |
| Upper Lake 1101 |        |          | 202       | 2506            |
| Upper Lake 1101 |        |          | 259       | 2122            |
| Upper Lake 1101 |        |          | 303       | 2360            |
| Upper Lake 1101 |        |          | 335       | 1931            |
| Upper Lake 1101 |        |          | 705       | 2009            |
| Upper Lake 1101 |        |          | 1057      | 816             |
| Upper Lake 1101 |        |          | 2047      | 713             |



# Middletown 1102CB and LR302610





# Middletown 1103CB and LR830

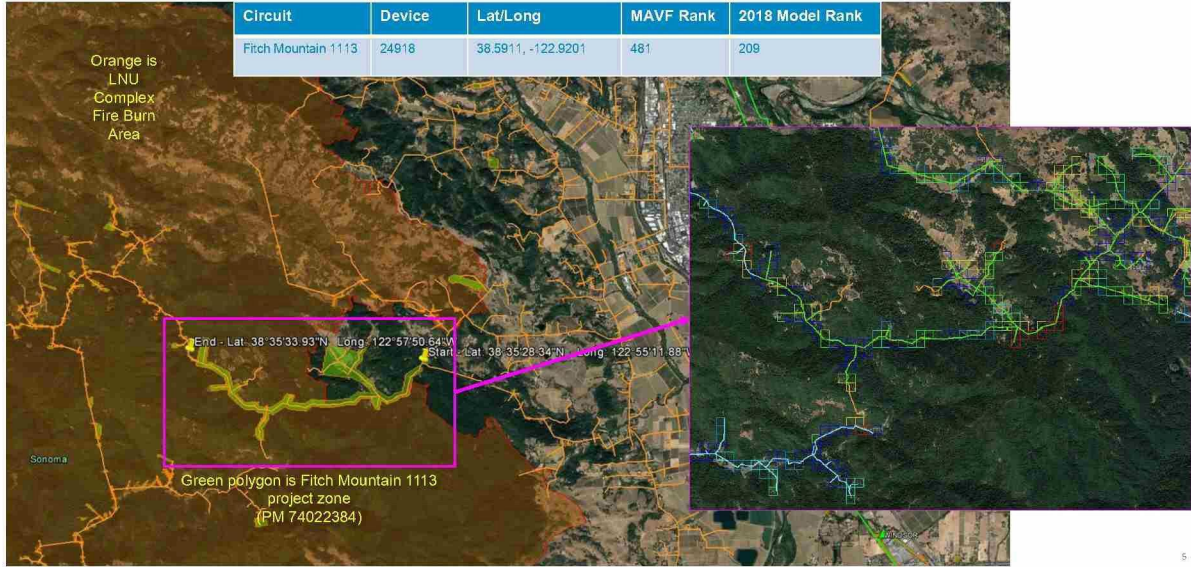
| Pin | Circuit         | Device | LAT/Long | MAVF Rank | 2018 Model Rank |
|-----|-----------------|--------|----------|-----------|-----------------|
| A   | Middletown 1103 |        |          | 5         | 1032            |
| B   | Middletown 1103 |        |          | 14        | 1322            |





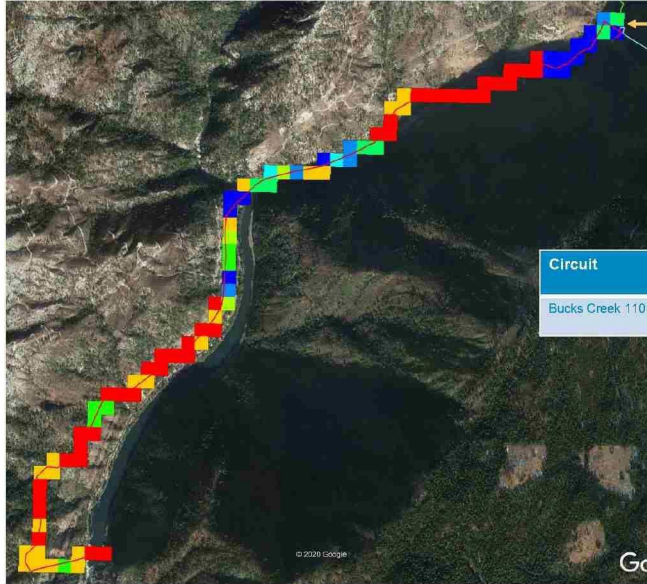
# Fitch Mountain 111324918

| Circuit             | Device | Lat/Long           | MAVF Rank | 2018 Model Rank |
|---------------------|--------|--------------------|-----------|-----------------|
| Fitch Mountain 1113 | 24918  | 38.5911, -122.9201 | 481       | 209             |





# Bucks Creek 1101CB



+39.9114, -121.3270

| Circuit          | Device | Lat/Long | MAVF Rank | 2018 Model Rank |
|------------------|--------|----------|-----------|-----------------|
| Bucks Creek 1101 |        |          | 11        | 1365            |