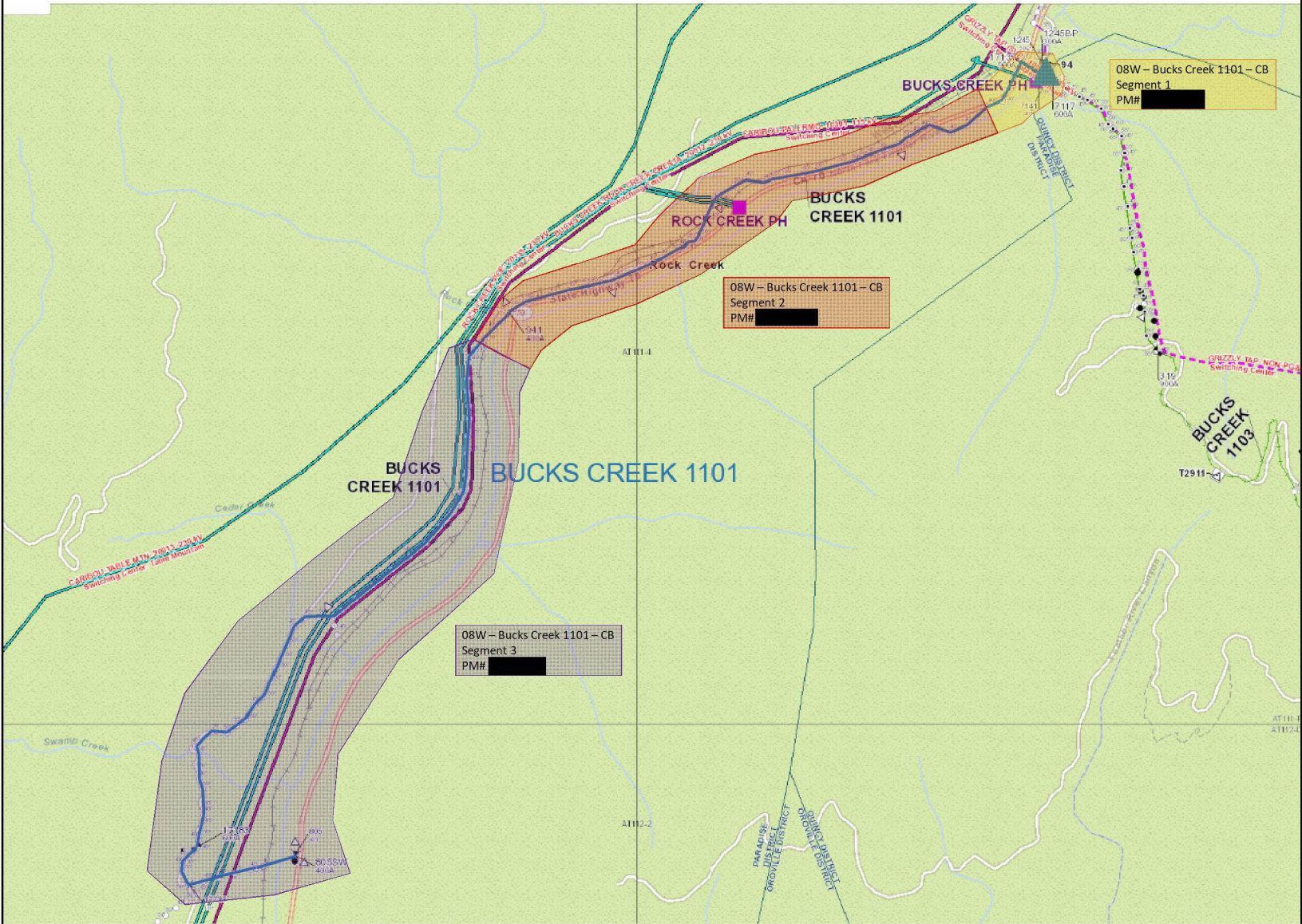


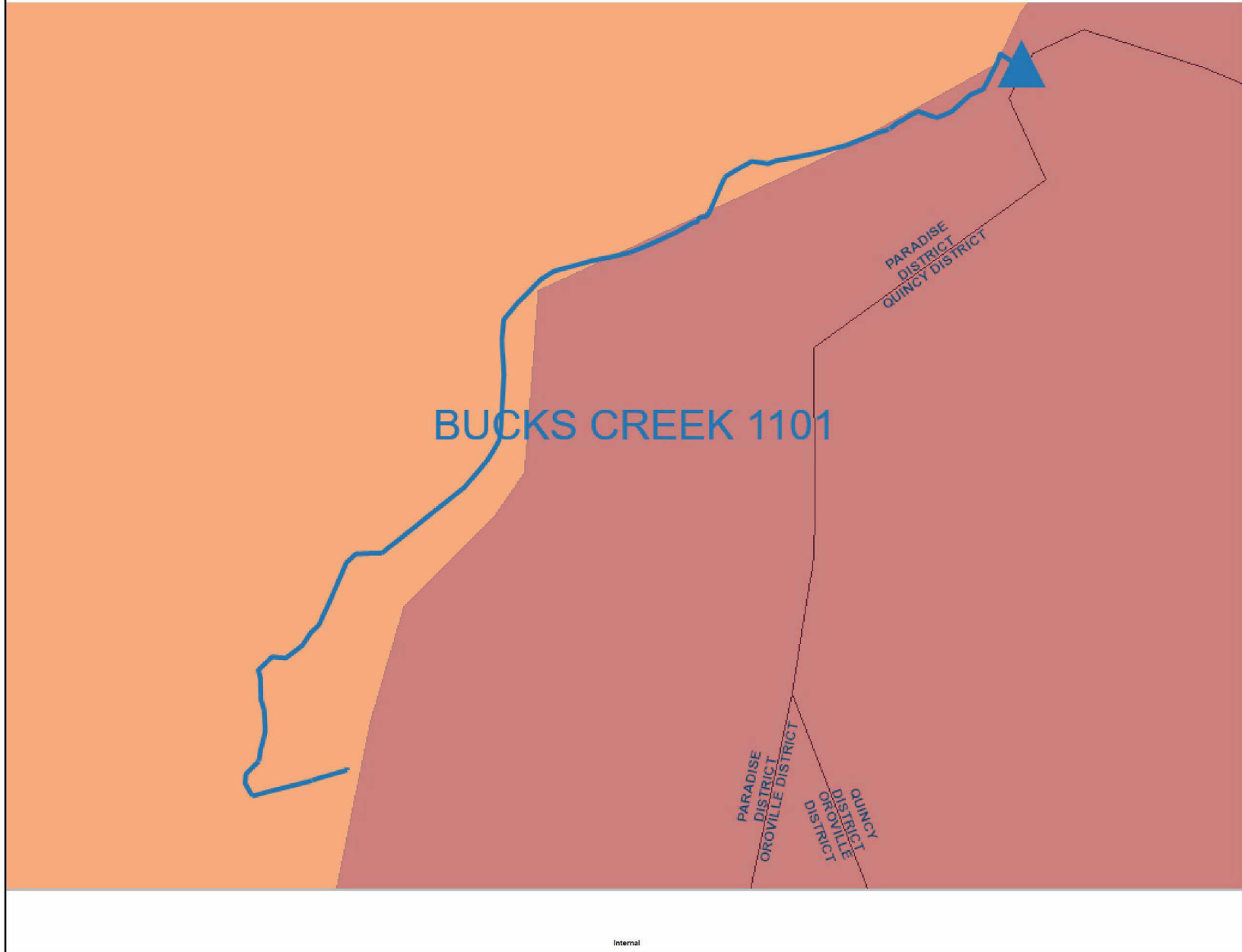
Bucks Creek 1101- PM# [REDACTED]

Overview Map



Internal

Bucks Creek 1101 Fire Tier Map



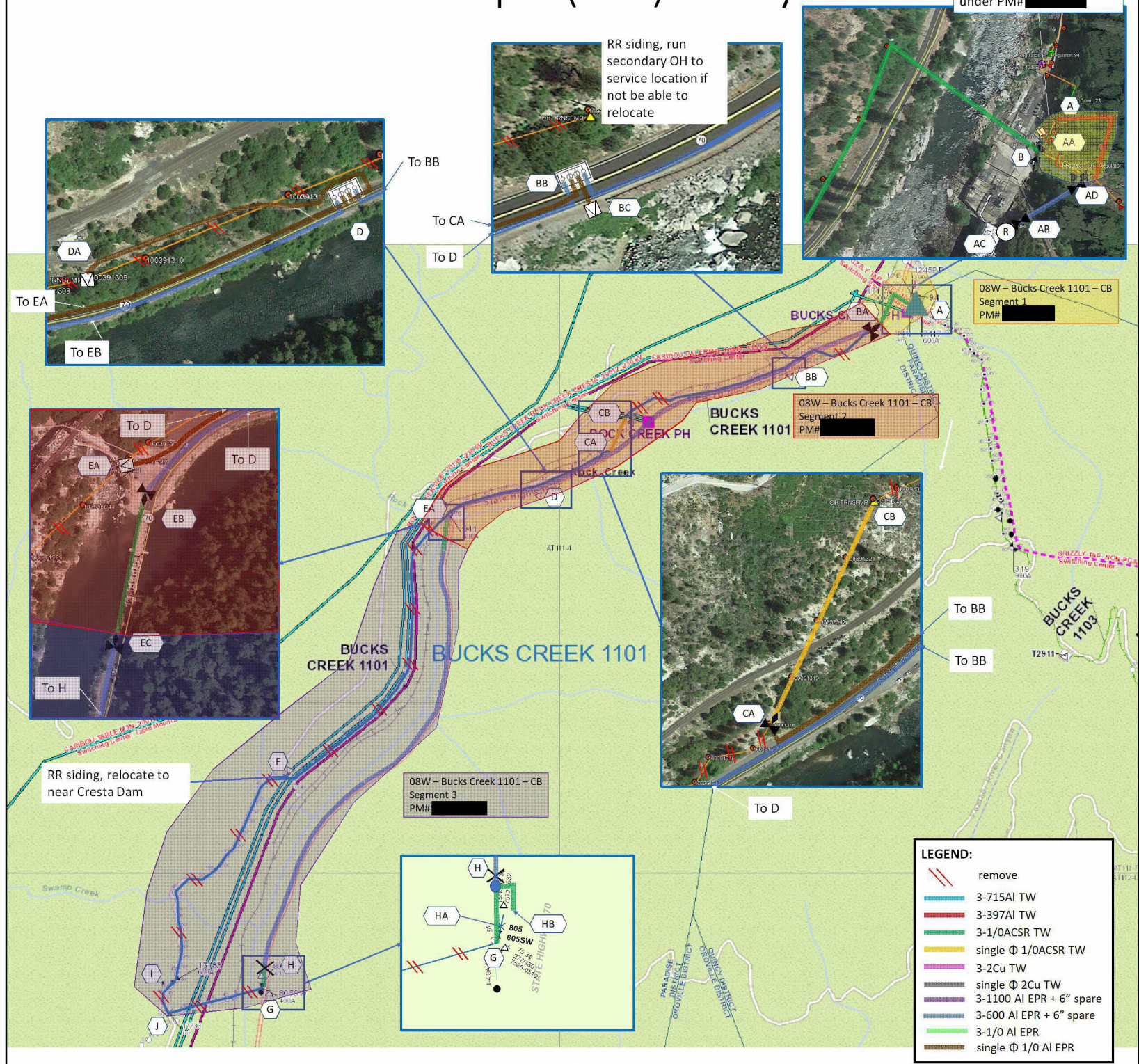
Internal

Satellite View



Preferred Scope (UG) – Key Sketch

Combine BC1101 with BC1103, to be completed under PM# [REDACTED]

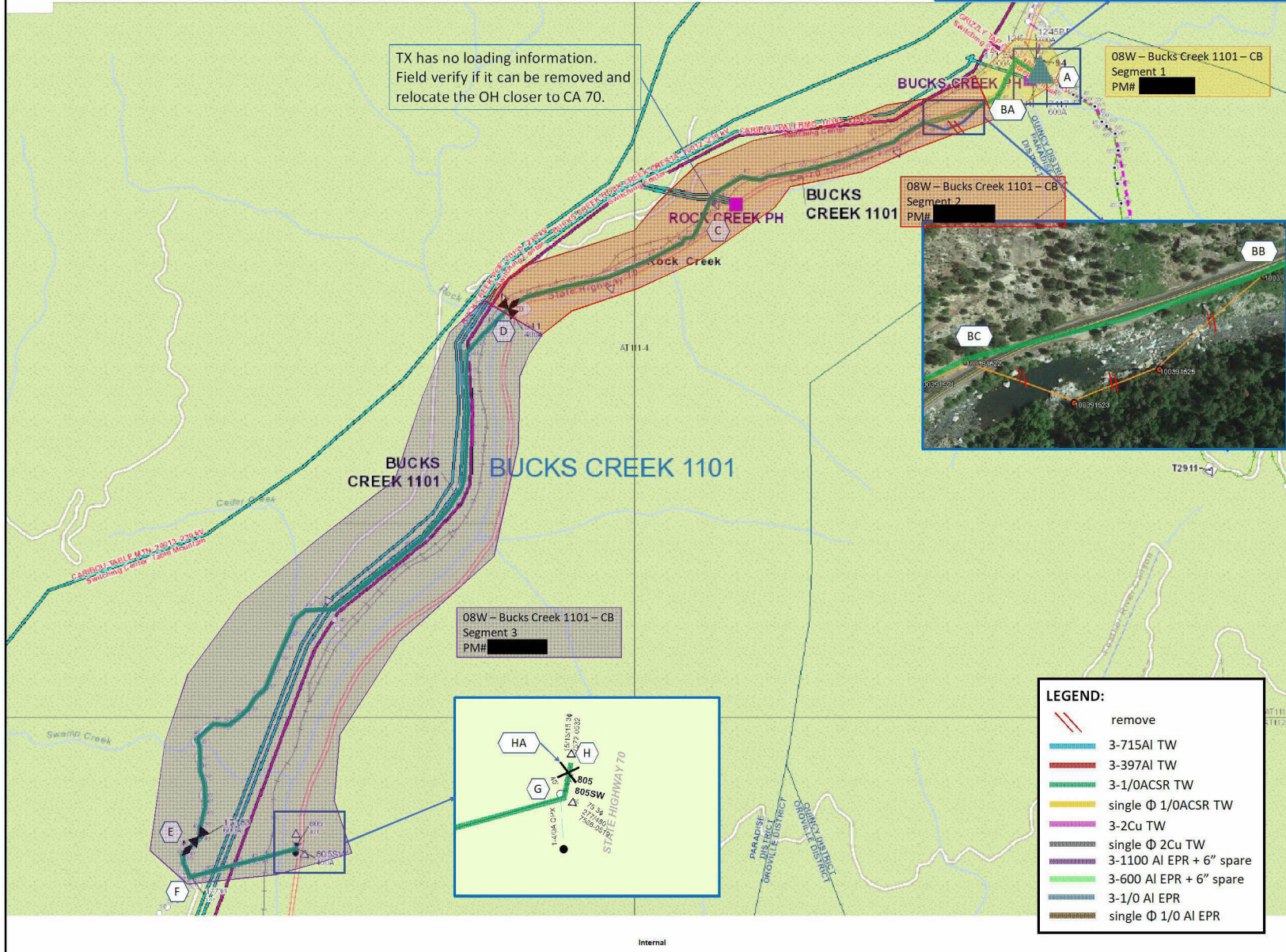


LEGEND:

	remove
	3-715AI TW
	3-397AI TW
	3-1/OACSR TW
	single Φ 1/OACSR TW
	3-2Cu TW
	single Φ 2Cu TW
	3-1100 AI EPR + 6" spare
	3-600 AI EPR + 6" spare
	3-1/0 AI EPR
	single Φ 1/0 AI EPR

Alternative 1 Scope – Key Sketch

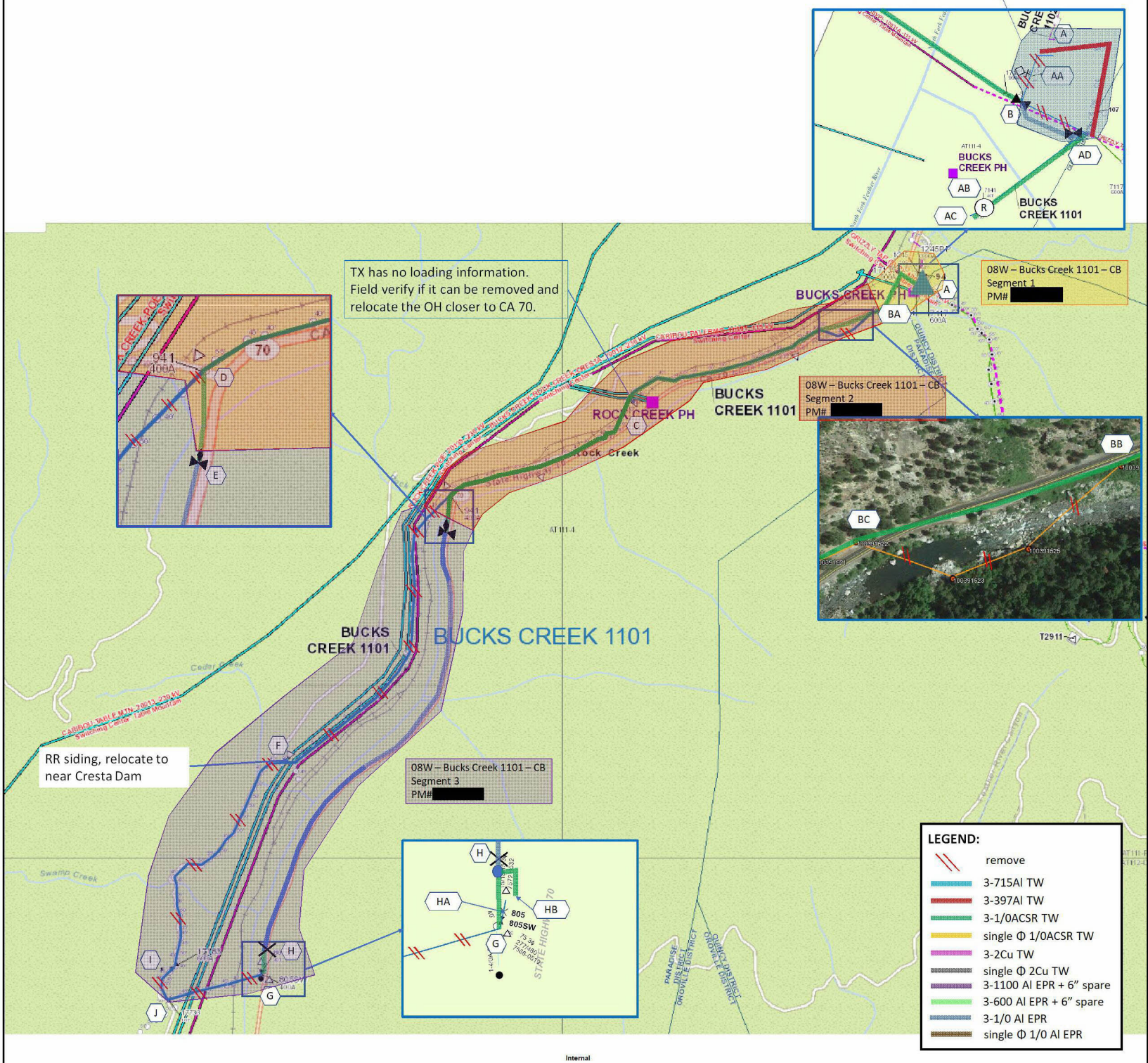
Combine BC1101 with BC1103, to be completed under PM# [REDACTED]



Internal

Alternative 2 Scope – Key Sketch

Combine BC1101 with BC1103, to be completed under PM# [REDACTED]



LEGEND:

	remove
	3-715AI TW
	3-397AI TW
	3-1/OACSR TW
	single Φ 1/OACSR TW
	3-2Cu TW
	single Φ 2Cu TW
	3-1100 AI EPR + 6" spare
	3-600 AI EPR + 6" spare
	3-1/0 AI EPR
	single Φ 1/0 AI EPR