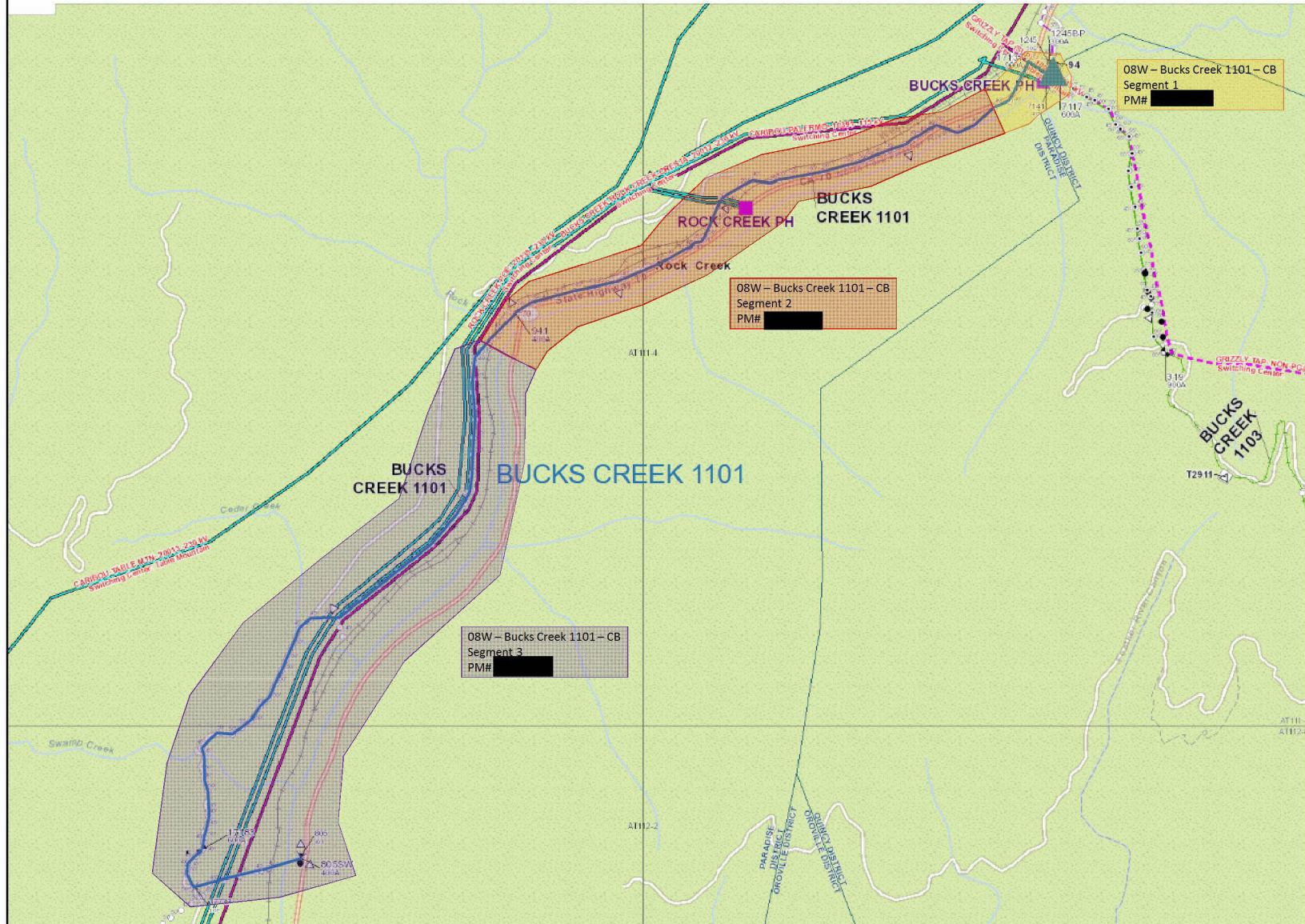
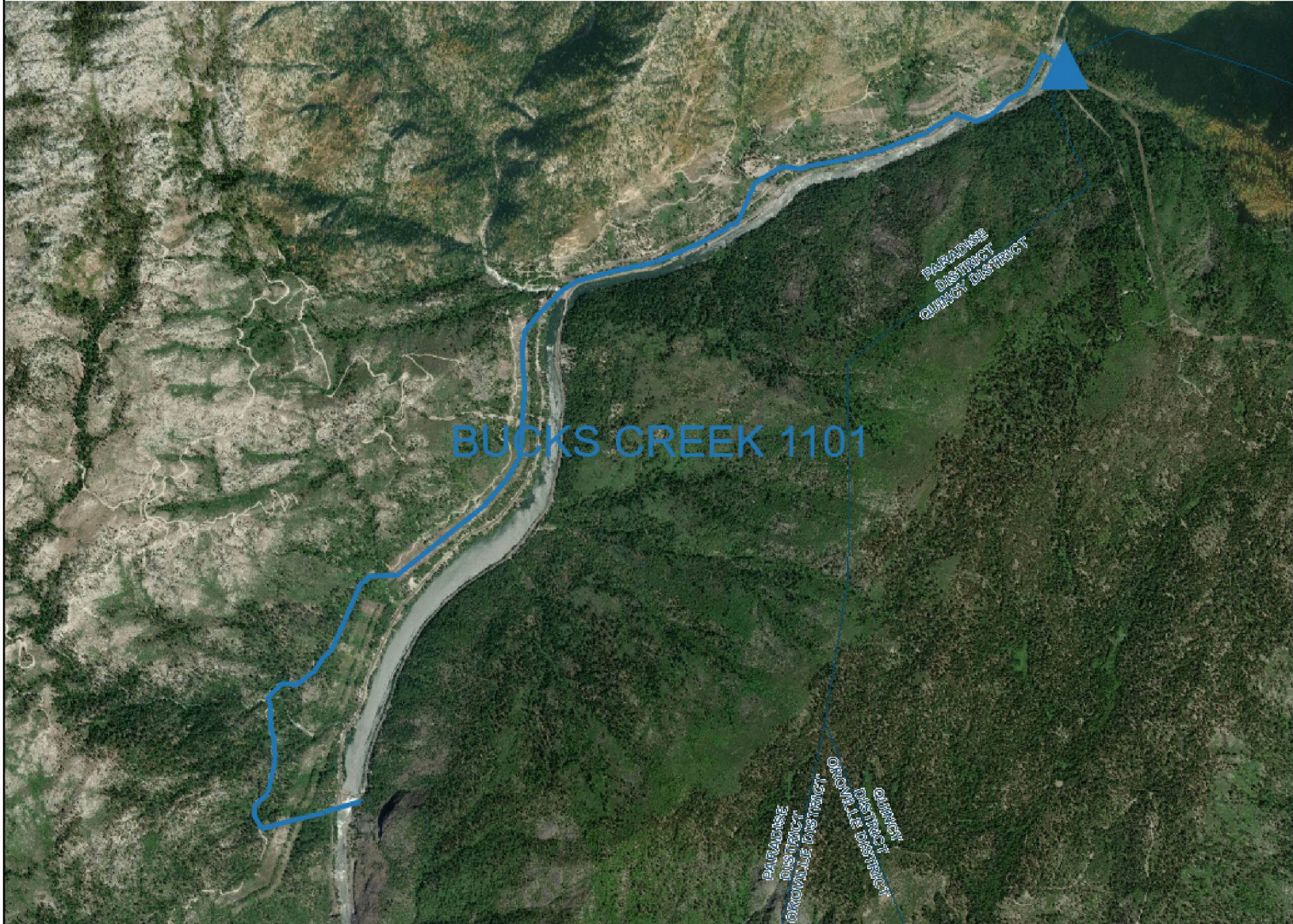


Bucks Creek 1101- PM# [REDACTED] Overview Map

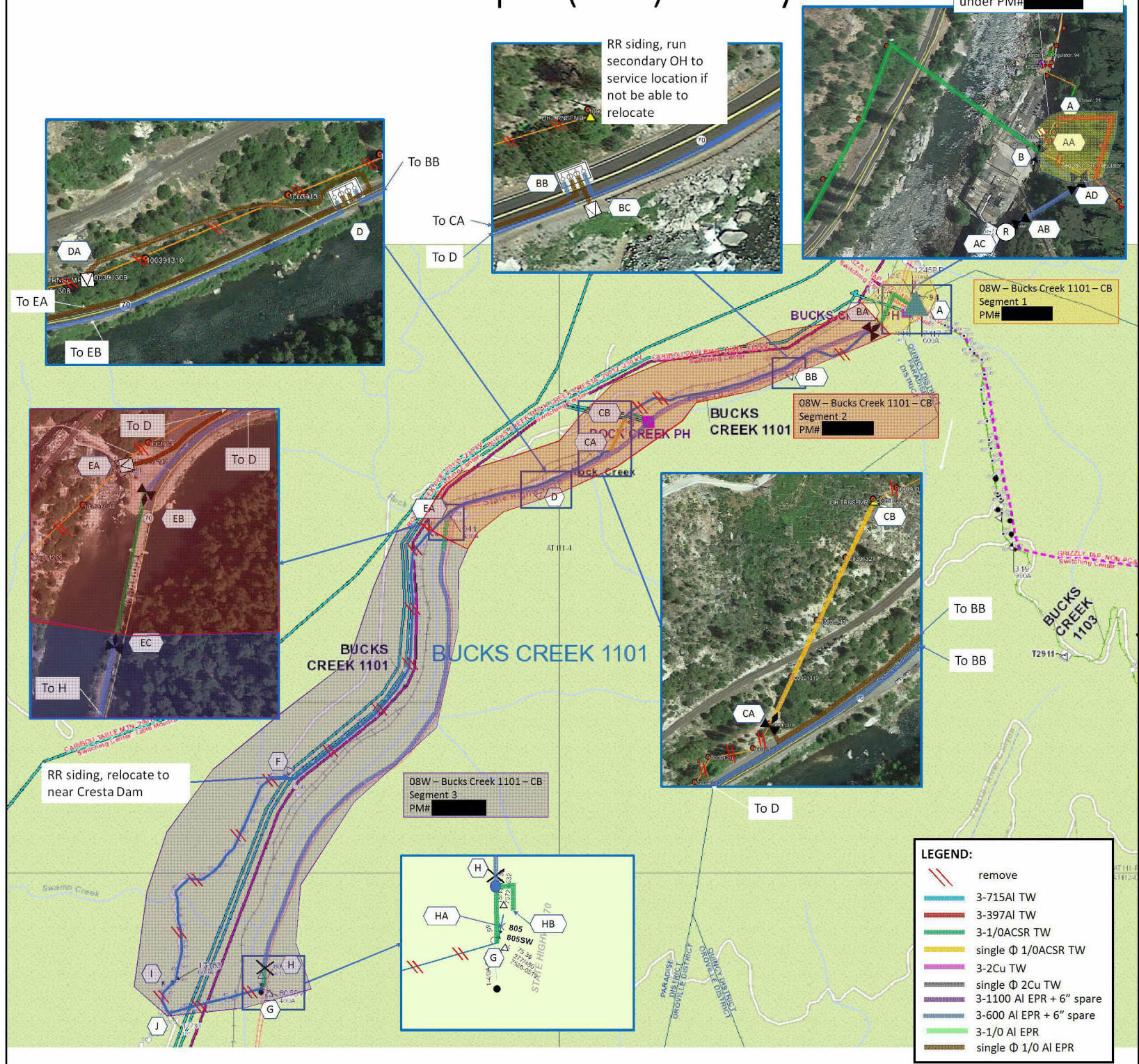


Satellite View



Preferred Scope (UG) – Key Sketch

Combine BC1101 with BC1103, to be completed under PM# [REDACTED]



To BB
To CA
To D
To EA
To EB

RR siding, run secondary OH to service location if not be able to relocate

To BB
To BB
To BB

To D
To D
To H

RR siding, relocate to near Cresta Dam

O8W – Bucks Creek 1101 – CB Segment 3
PM# [REDACTED]

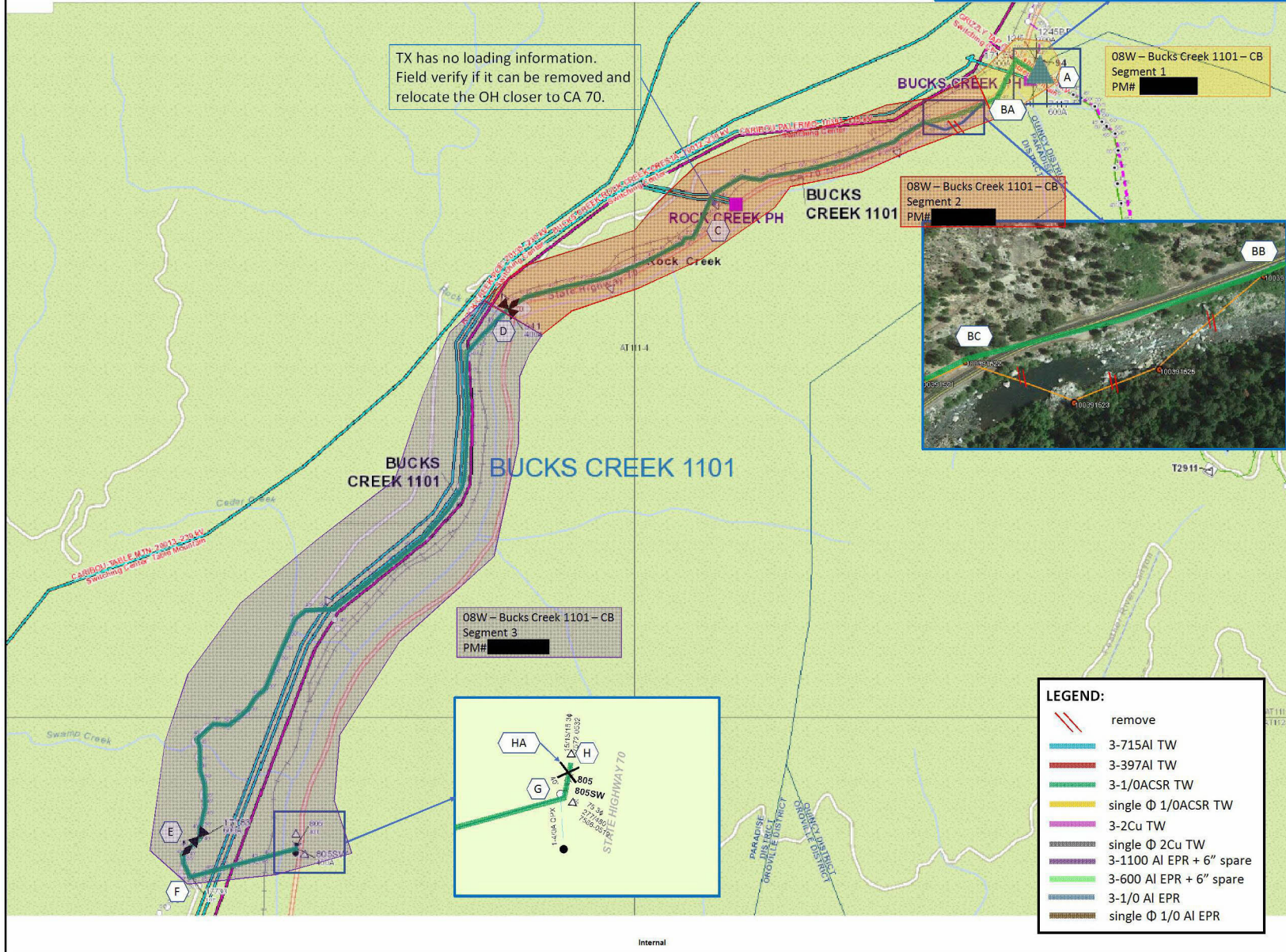
O8W – Bucks Creek 1101 – CB Segment 1
PM# [REDACTED]

O8W – Bucks Creek 1101 – CB Segment 2
PM# [REDACTED]

- LEGEND:**
- remove
 - 3-715AI TW
 - 3-397AI TW
 - 3-1/OACSR TW
 - single Φ 1/OACSR TW
 - 3-2Cu TW
 - single Φ 2Cu TW
 - 3-1100 AI EPR + 6" spare
 - 3-600 AI EPR + 6" spare
 - 3-1/O AI EPR
 - single Φ 1/O AI EPR

Alternative 1 Scope – Key Sketch

Combine BC1101 with BC1103, to be completed under PM# [REDACTED]



Alternative 2 Scope – Key Sketch

