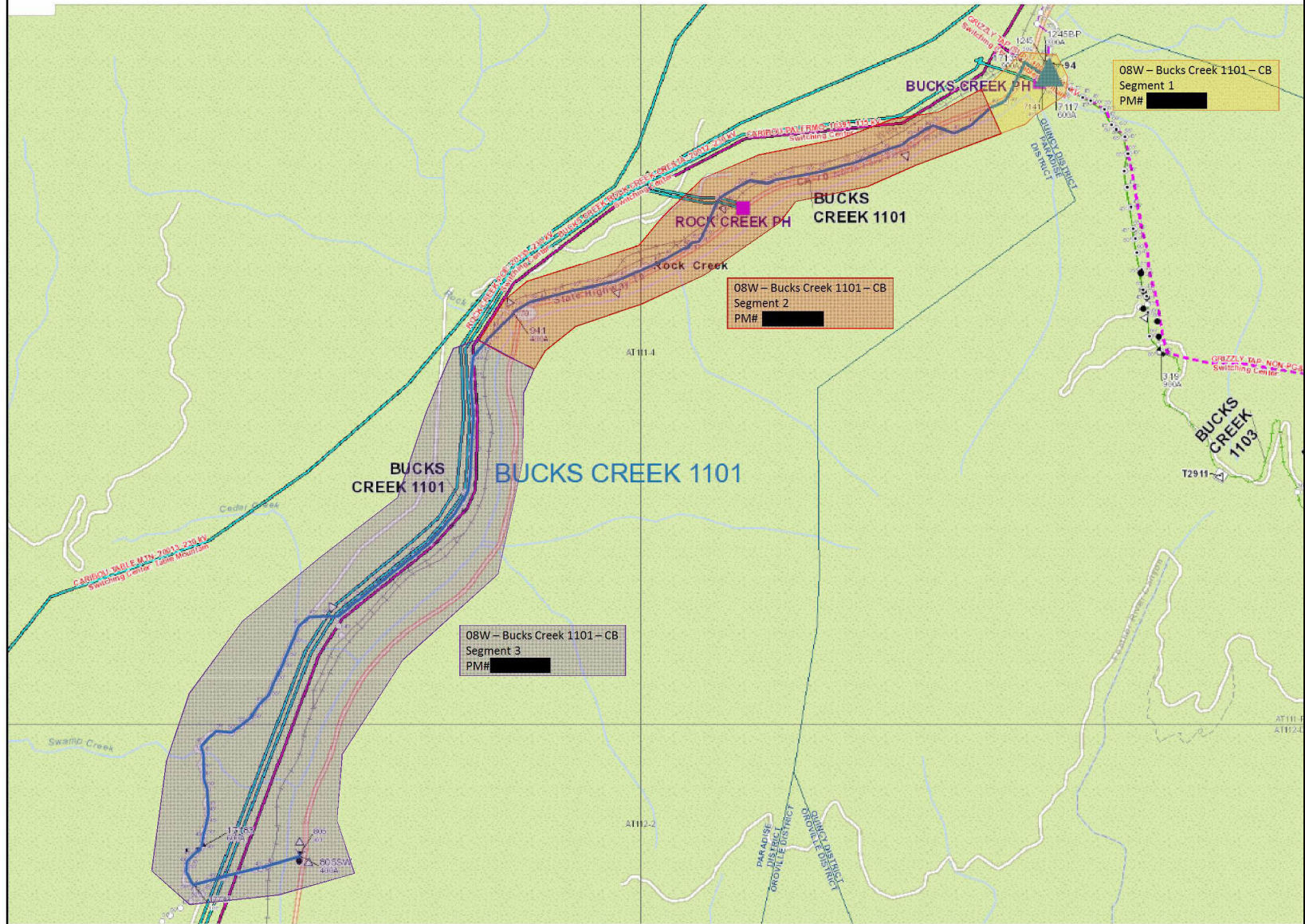
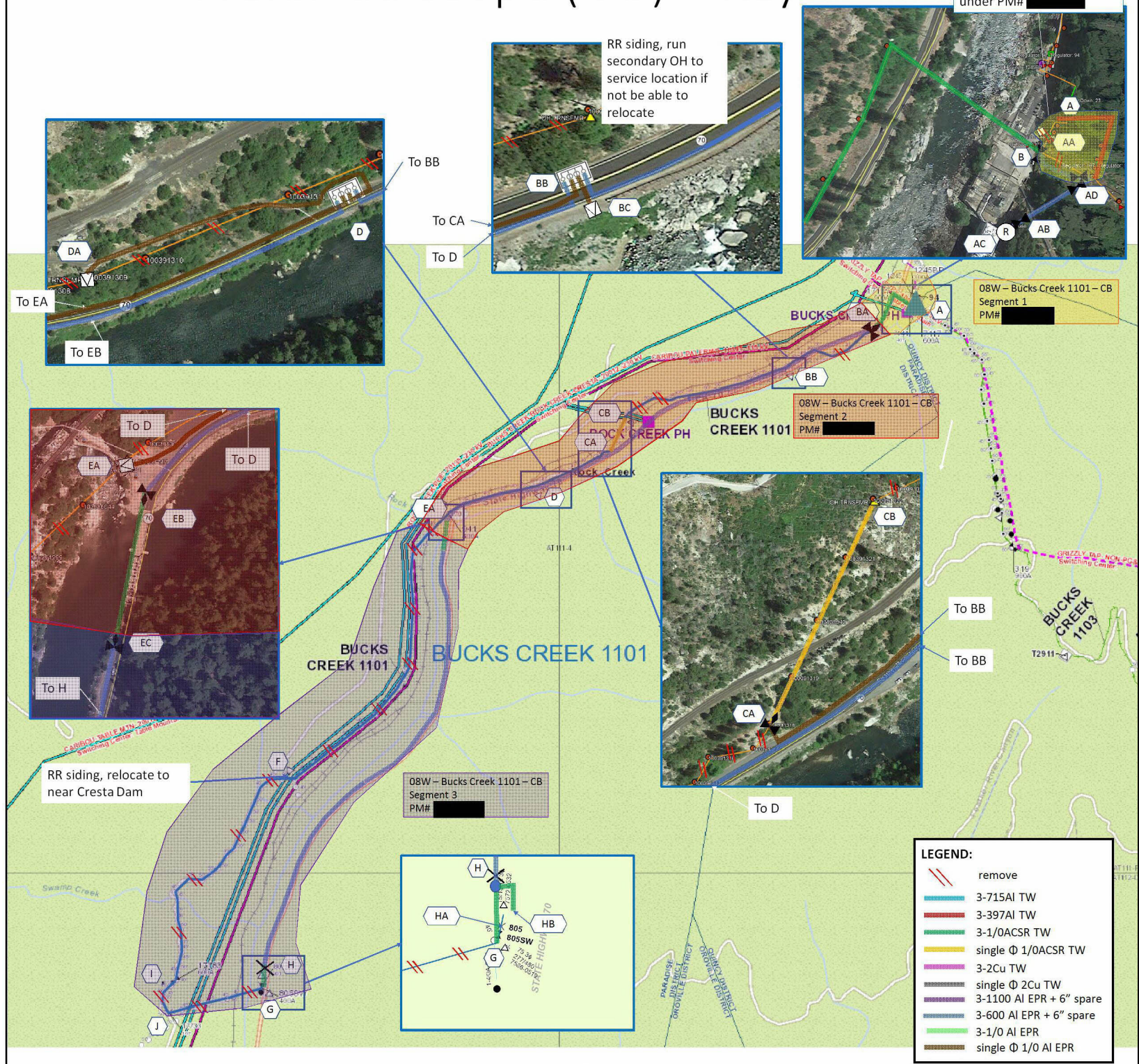


Bucks Creek 1101- PM# [REDACTED] Overview Map



Preferred Scope (UG) – Key Sketch

Combine BC1101 with BC1103, to be completed under PM# [REDACTED]



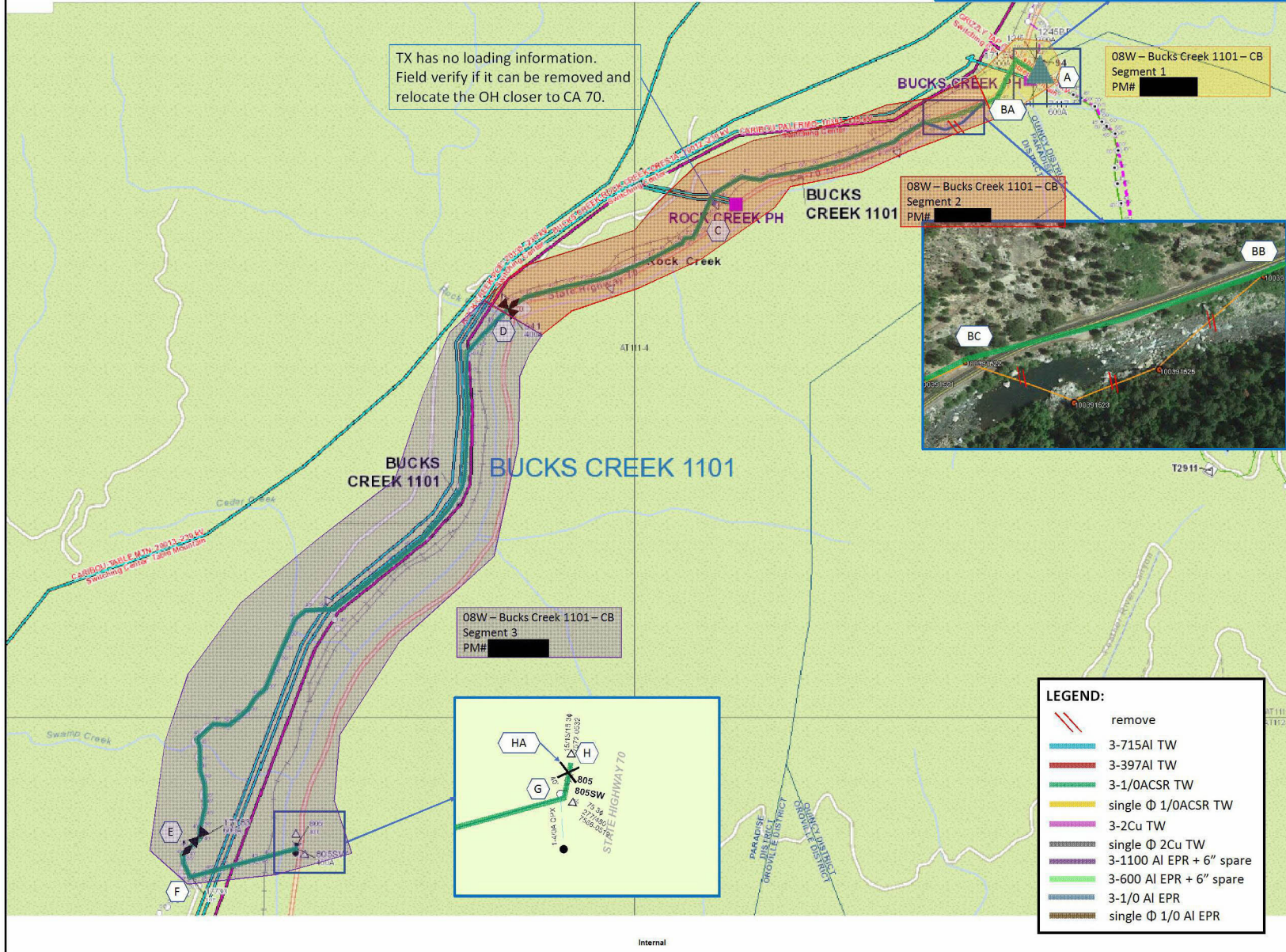
LEGEND:

- remove
- 3-715AI TW
- 3-397AI TW
- 3-1/OACSR TW
- single Φ 1/OACSR TW
- 3-2Cu TW
- single Φ 2Cu TW
- 3-1100 AI EPR + 6" spare
- 3-600 AI EPR + 6" spare
- 3-1/O AI EPR
- single Φ 1/O AI EPR

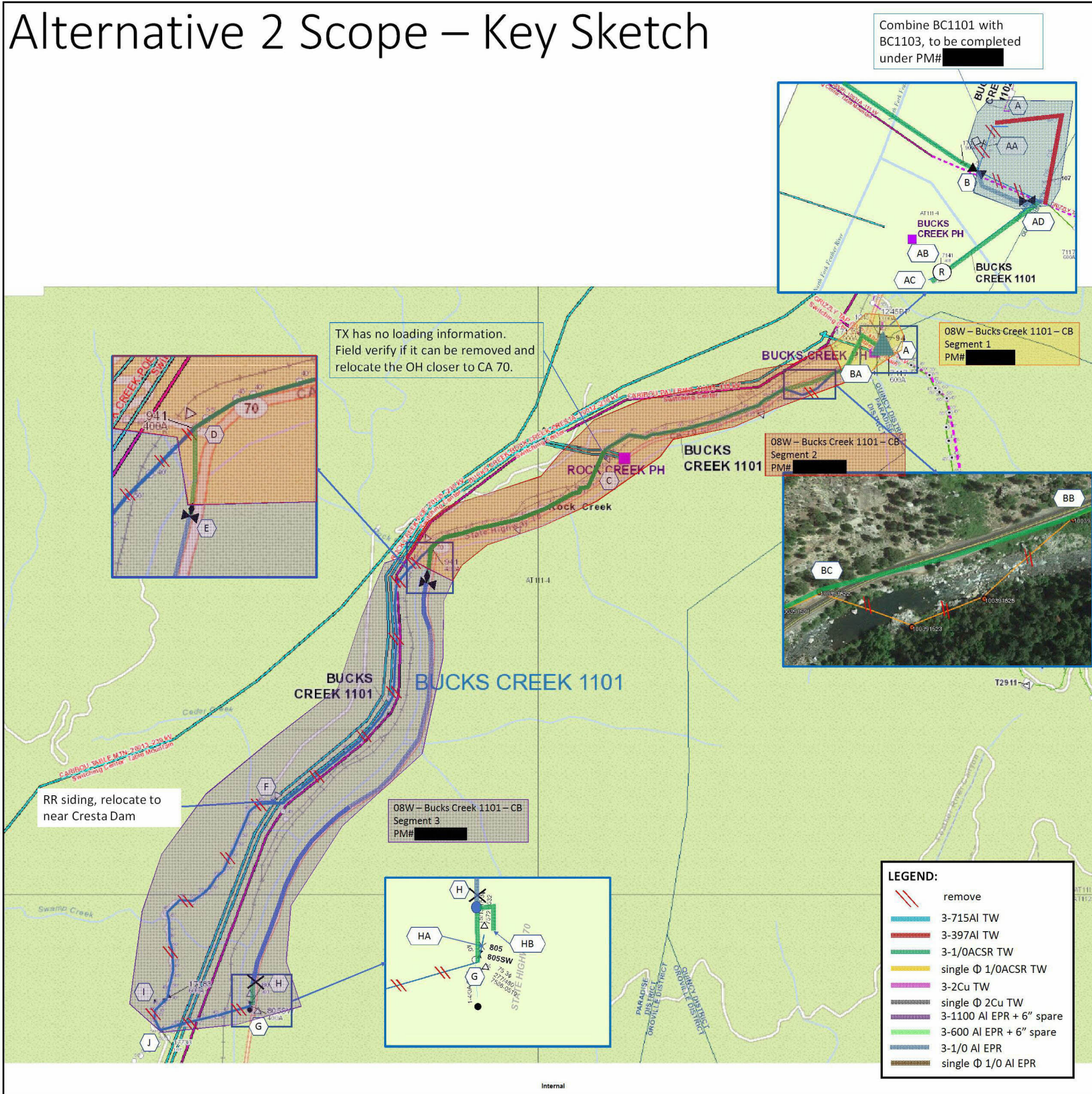
Internal

Alternative 1 Scope – Key Sketch

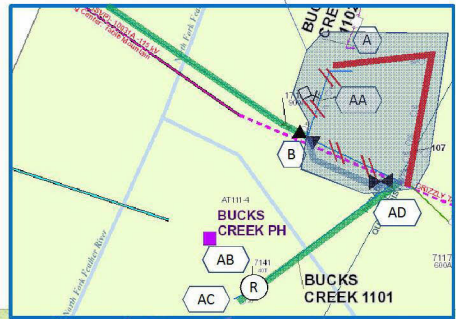
Combine BC1101 with BC1103, to be completed under PM# [REDACTED]



Alternative 2 Scope – Key Sketch

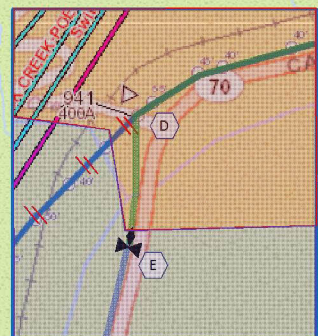


Combine BC1101 with BC1103, to be completed under PM# [REDACTED]



O8W - Bucks Creek 1101 - CB Segment 1
PM# [REDACTED]

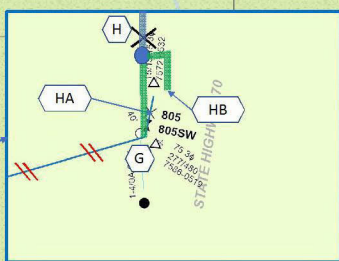
O8W - Bucks Creek 1101 - CB Segment 2
PM# [REDACTED]



TX has no loading information. Field verify if it can be removed and relocate the OH closer to CA 70.

RR siding, relocate to near Cresta Dam

O8W - Bucks Creek 1101 - CB Segment 3
PM# [REDACTED]



LEGEND:

	remove
	3-715AI TW
	3-397AI TW
	3-1/OACSR TW
	single Φ 1/OACSR TW
	3-2Cu TW
	single Φ 2Cu TW
	3-1100 AI EPR + 6" spare
	3-600 AI EPR + 6" spare
	3-1/0 AI EPR
	single Φ 1/0 AI EPR