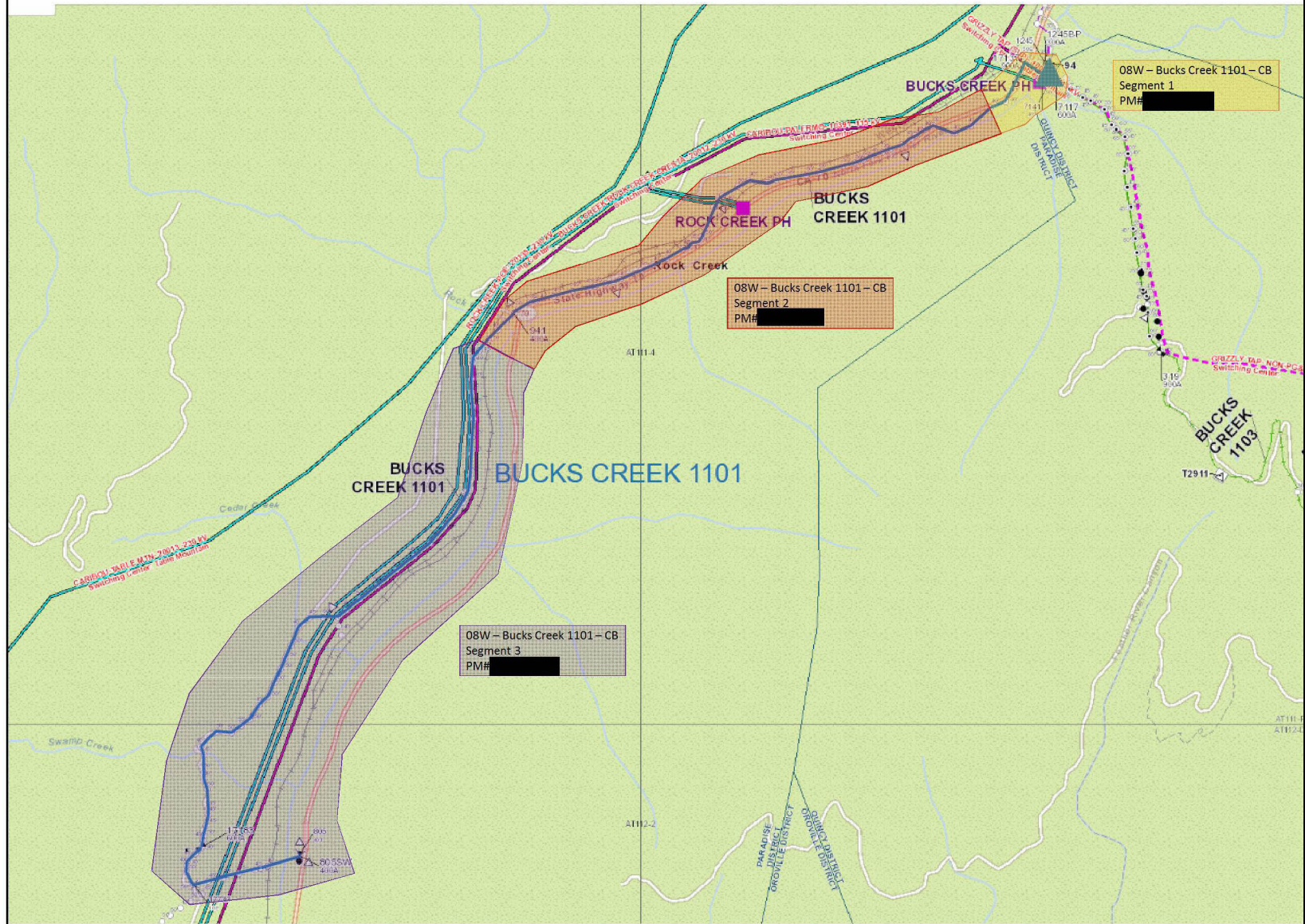
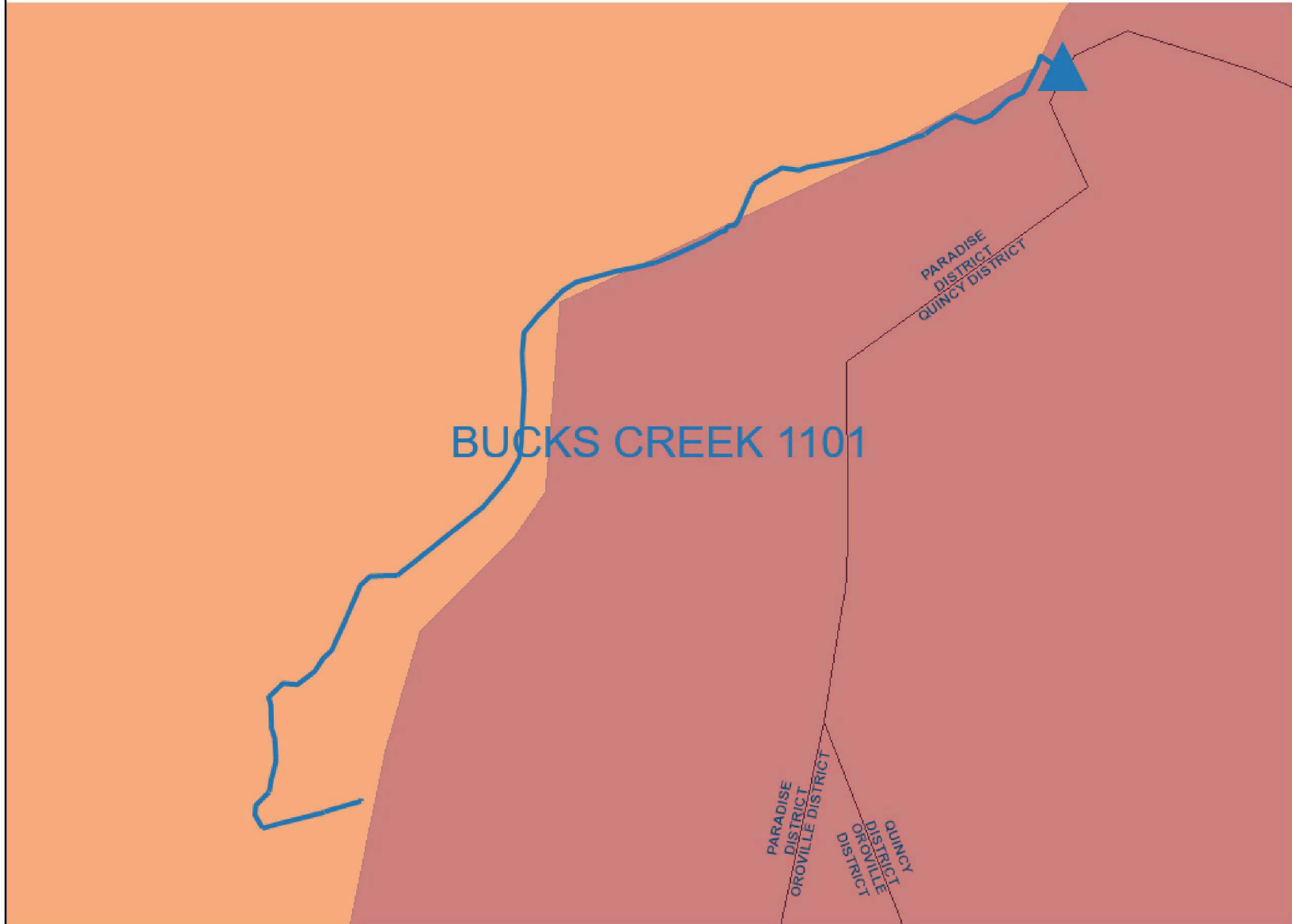


Bucks Creek 1101- PM# [REDACTED] Overview Map



Bucks Creek 1101 Fire Tier Map

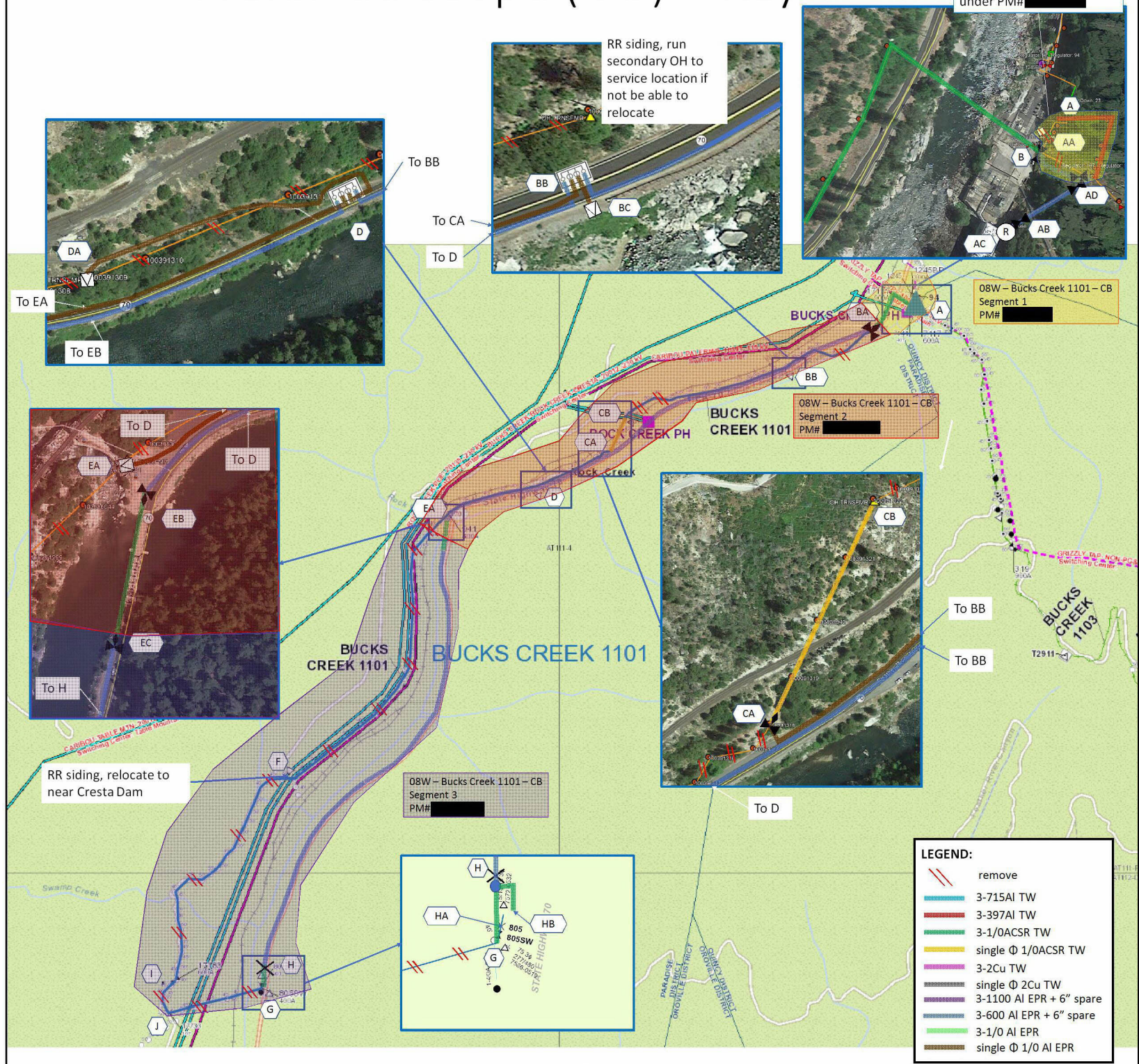


Satellite View



Preferred Scope (UG) – Key Sketch

Combine BC1101 with BC1103, to be completed under PM# [REDACTED]



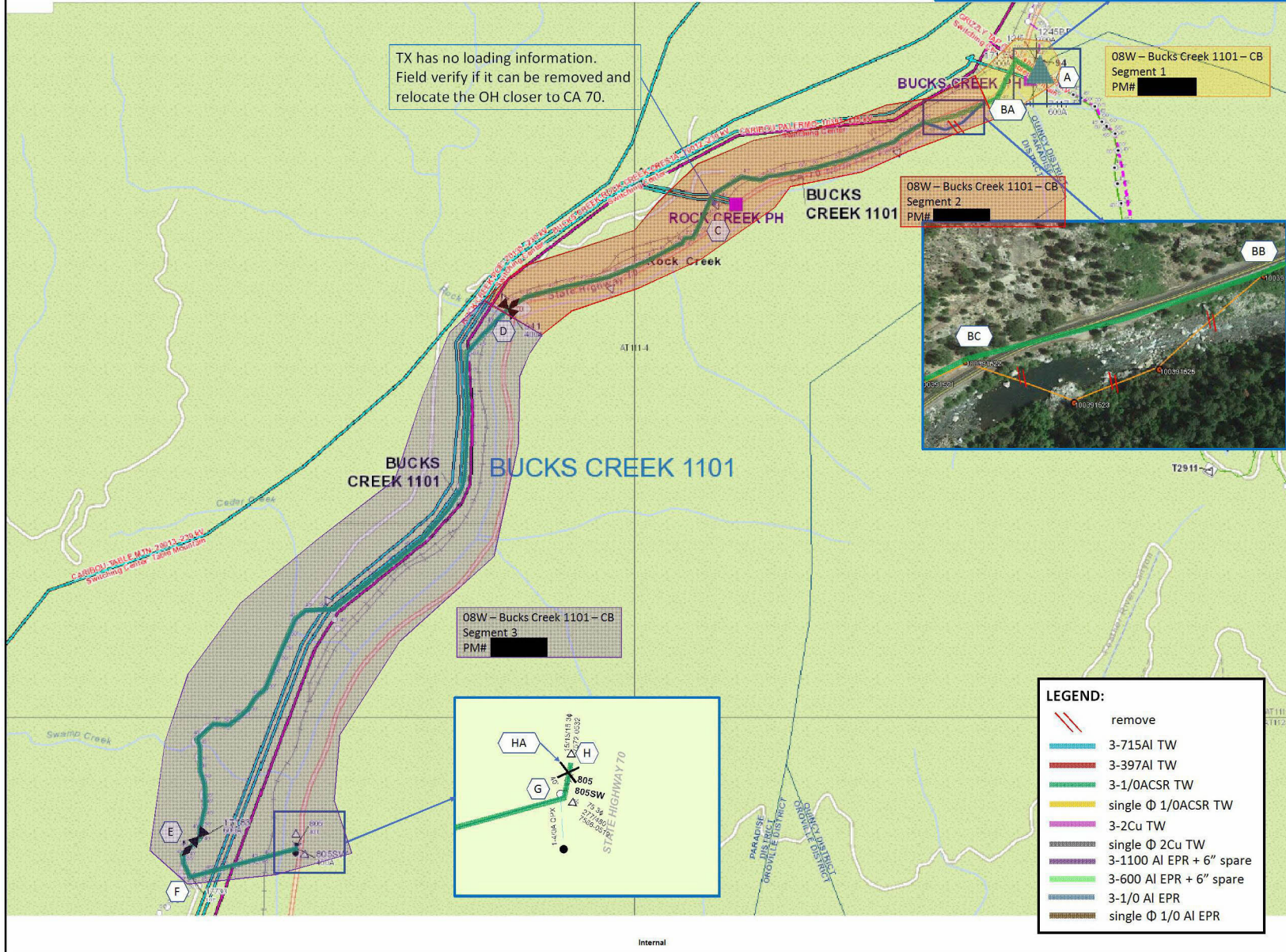
LEGEND:

- remove
- 3-715AI TW
- 3-397AI TW
- 3-1/OACSR TW
- single Φ 1/OACSR TW
- 3-2Cu TW
- single Φ 2Cu TW
- 3-1100 AI EPR + 6" spare
- 3-600 AI EPR + 6" spare
- 3-1/0 AI EPR
- single Φ 1/0 AI EPR

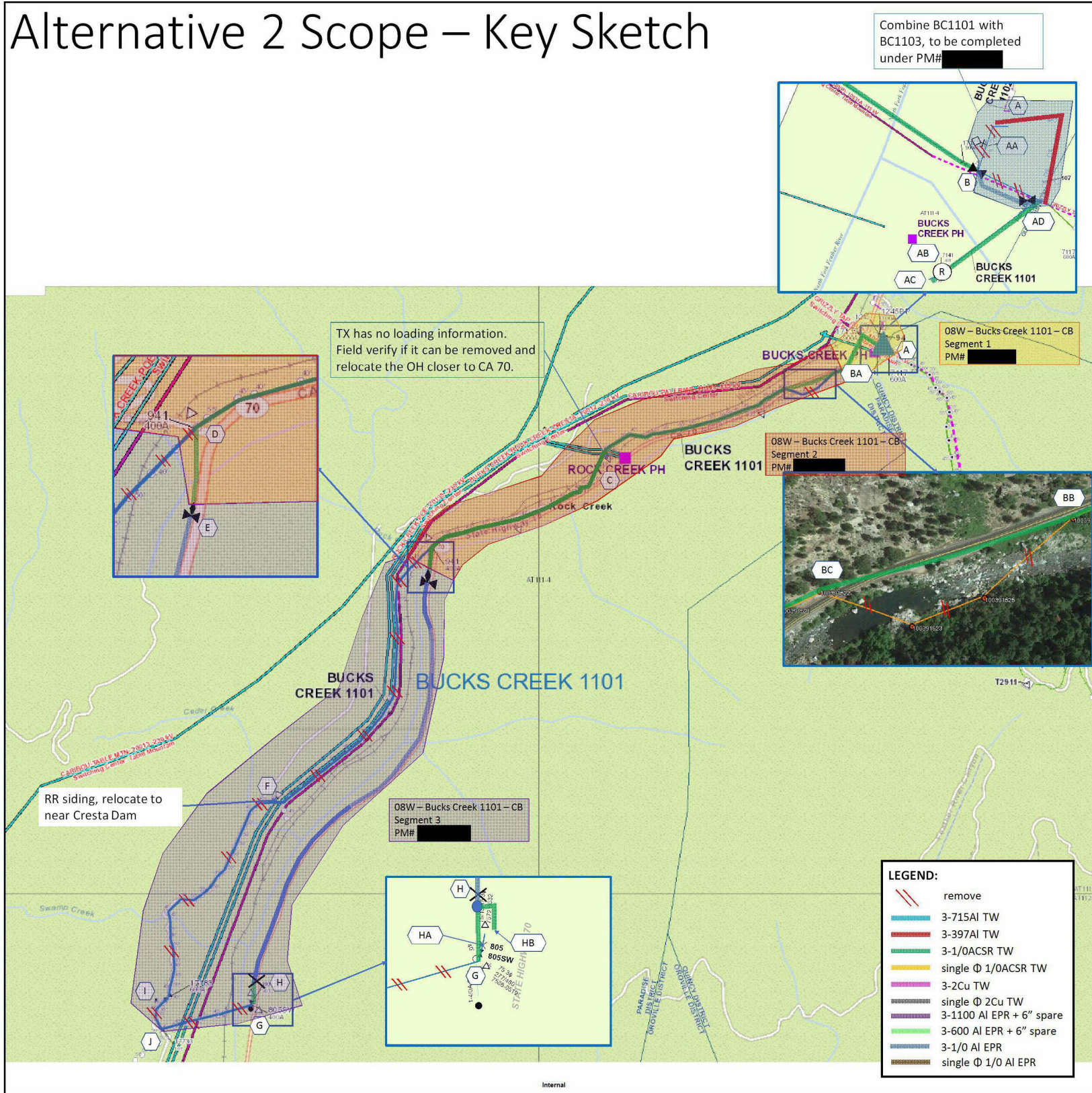
Internal

Alternative 1 Scope – Key Sketch

Combine BC1101 with BC1103, to be completed under PM# [REDACTED]



Alternative 2 Scope – Key Sketch



Combine BC1101 with BC1103, to be completed under PM# [redacted]

TX has no loading information. Field verify if it can be removed and relocate the OH closer to CA 70.

08W – Bucks Creek 1101 – CB Segment 1 PM# [redacted]

08W – Bucks Creek 1101 – CB Segment 2 PM# [redacted]

08W – Bucks Creek 1101 – CB Segment 3 PM# [redacted]

RR siding, relocate to near Cresta Dam

LEGEND:

	remove
	3-715AI TW
	3-397AI TW
	3-1/OACSR TW
	single 1/0 OACSR TW
	3-2Cu TW
	single 1/0 2Cu TW
	3-1100 AI EPR + 6" spare
	3-600 AI EPR + 6" spare
	3-1/0 AI EPR
	single 1/0 AI EPR