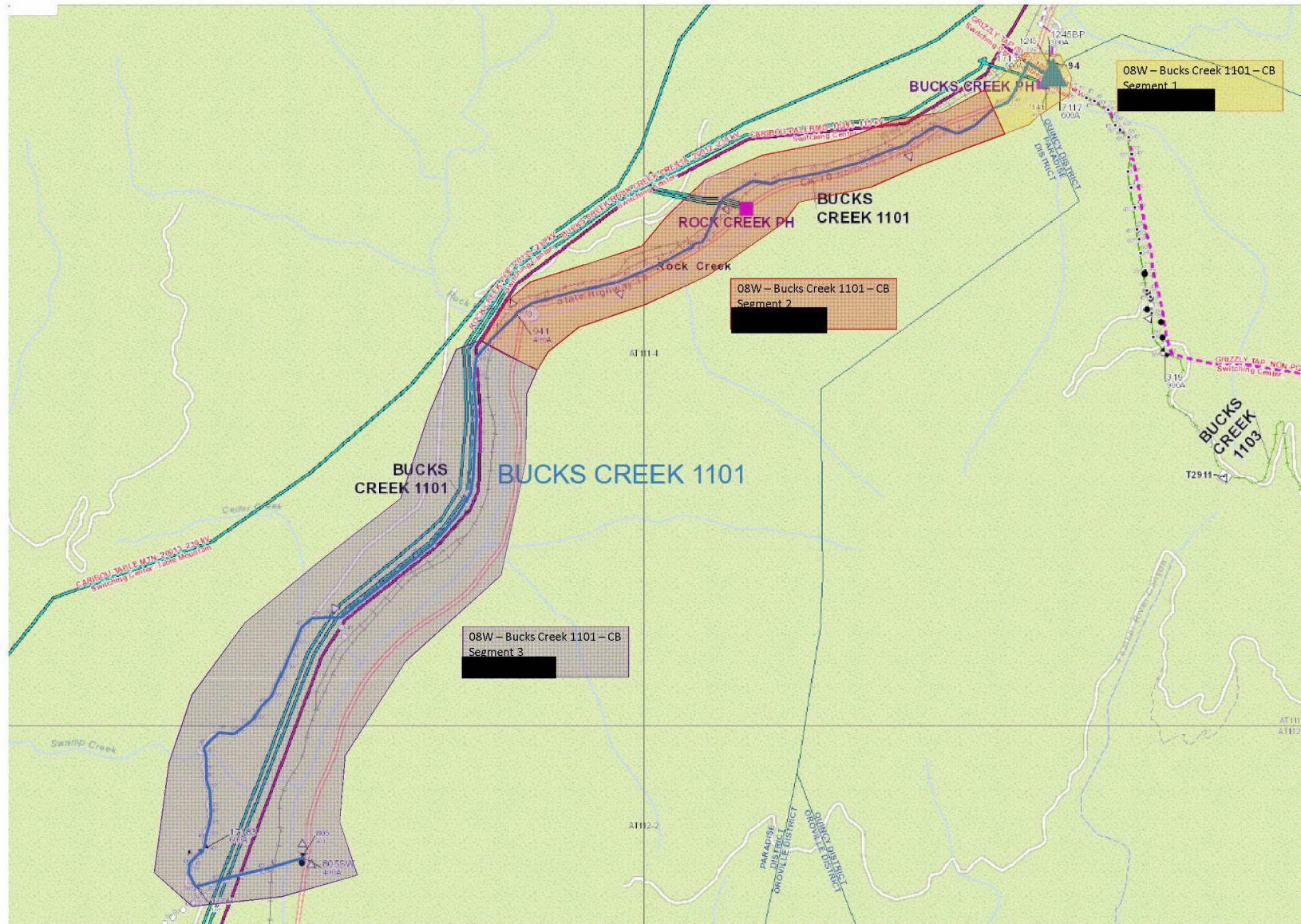
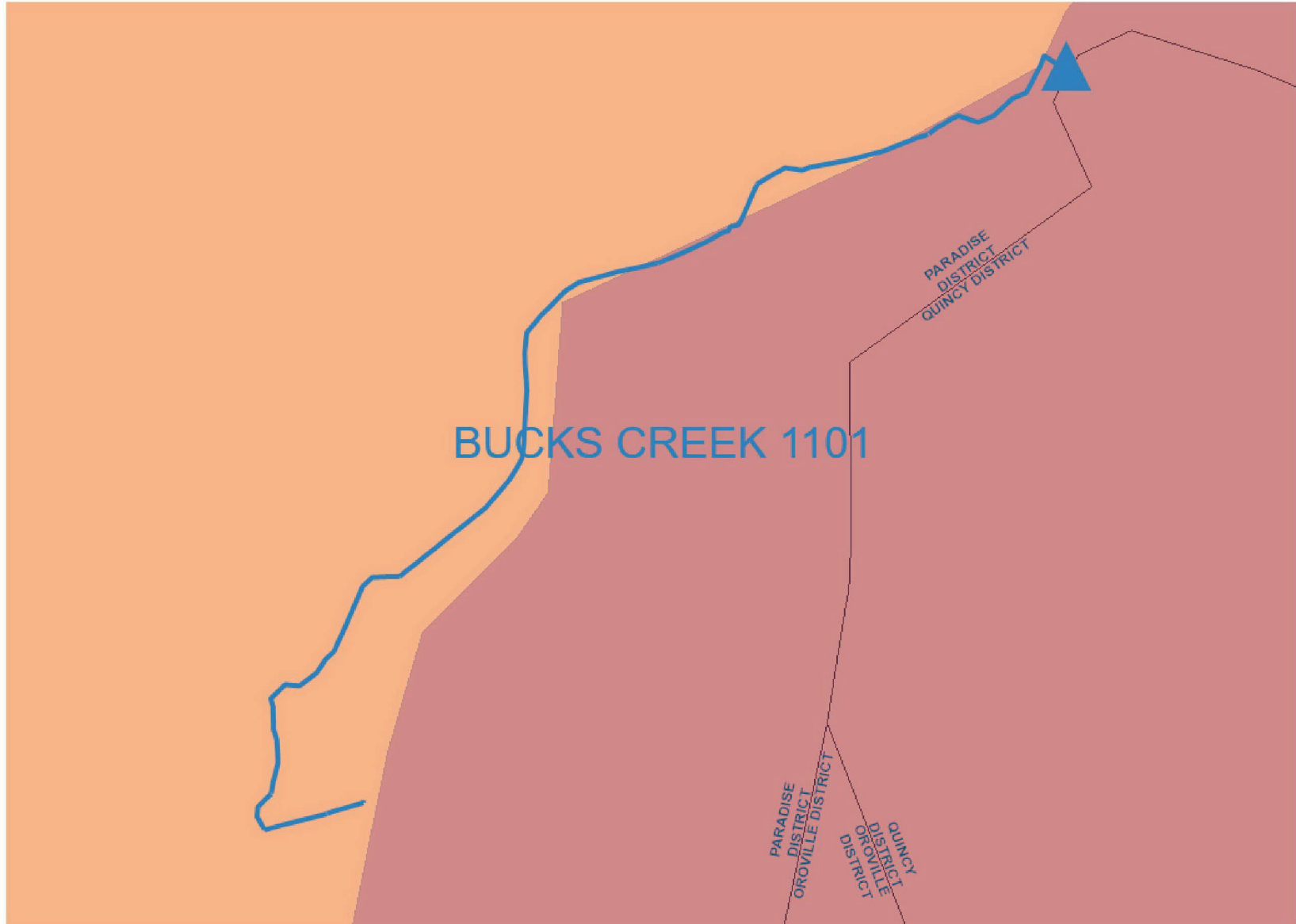


Bucks Creek 1101- PM# [REDACTED] Overview Map



Bucks Creek 1101 Fire Tier Map

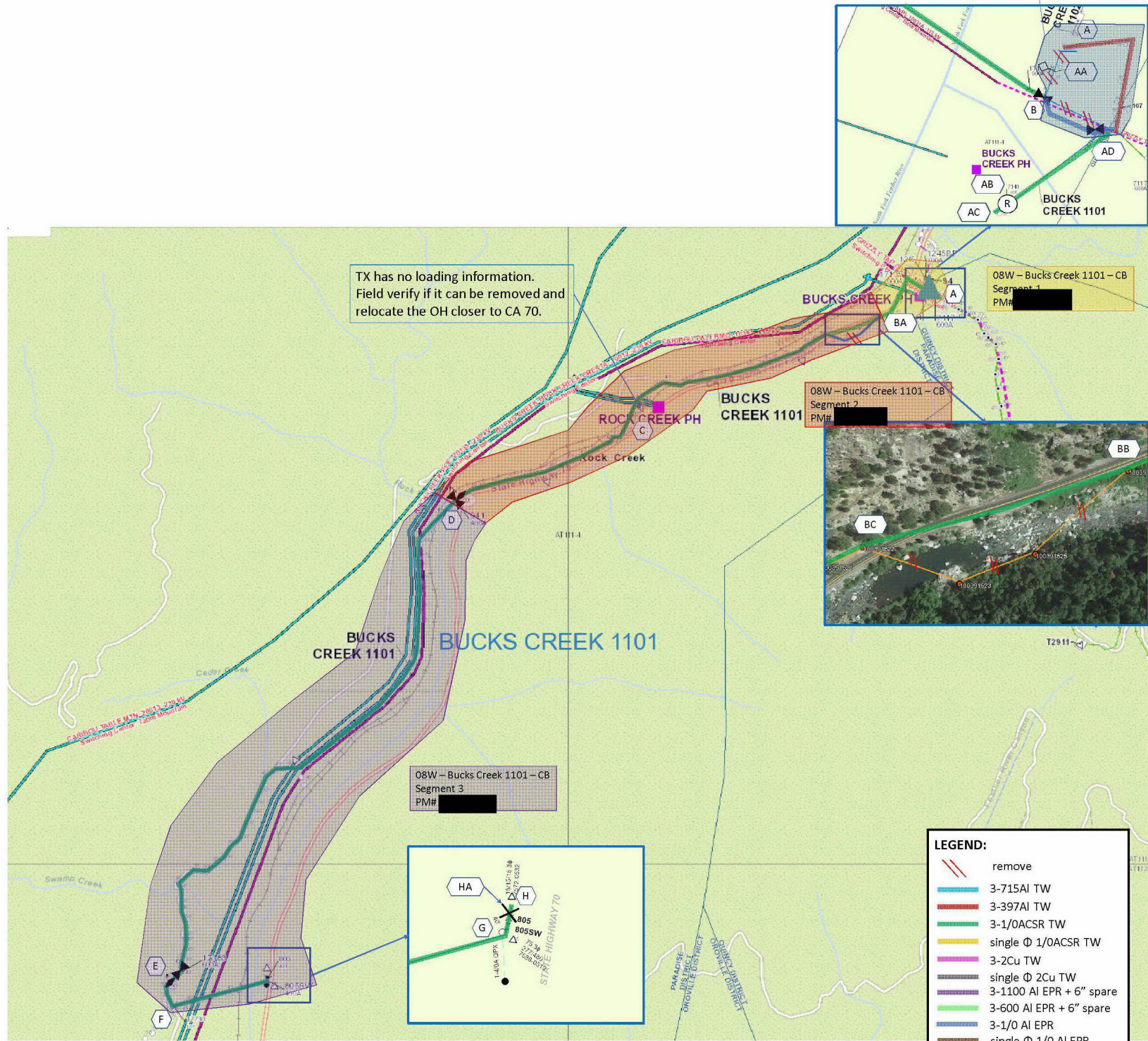


Satellite View

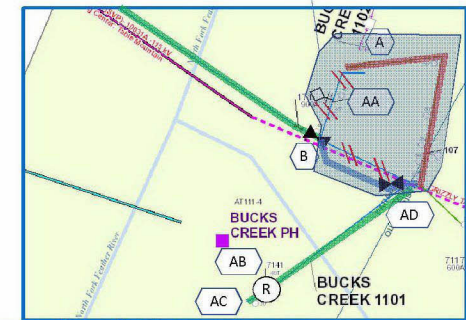


Alternative 1 Scope – Key Sketch

Combine BC1101 with BC1103, to be completed under PM# [REDACTED]



TX has no loading information. Field verify if it can be removed and relocate the OH closer to CA 70.

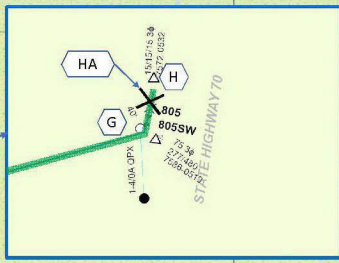


08W – Bucks Creek 1101 – CB Segment 1 PM# [REDACTED]

08W – Bucks Creek 1101 – CB Segment 2 PM# [REDACTED]



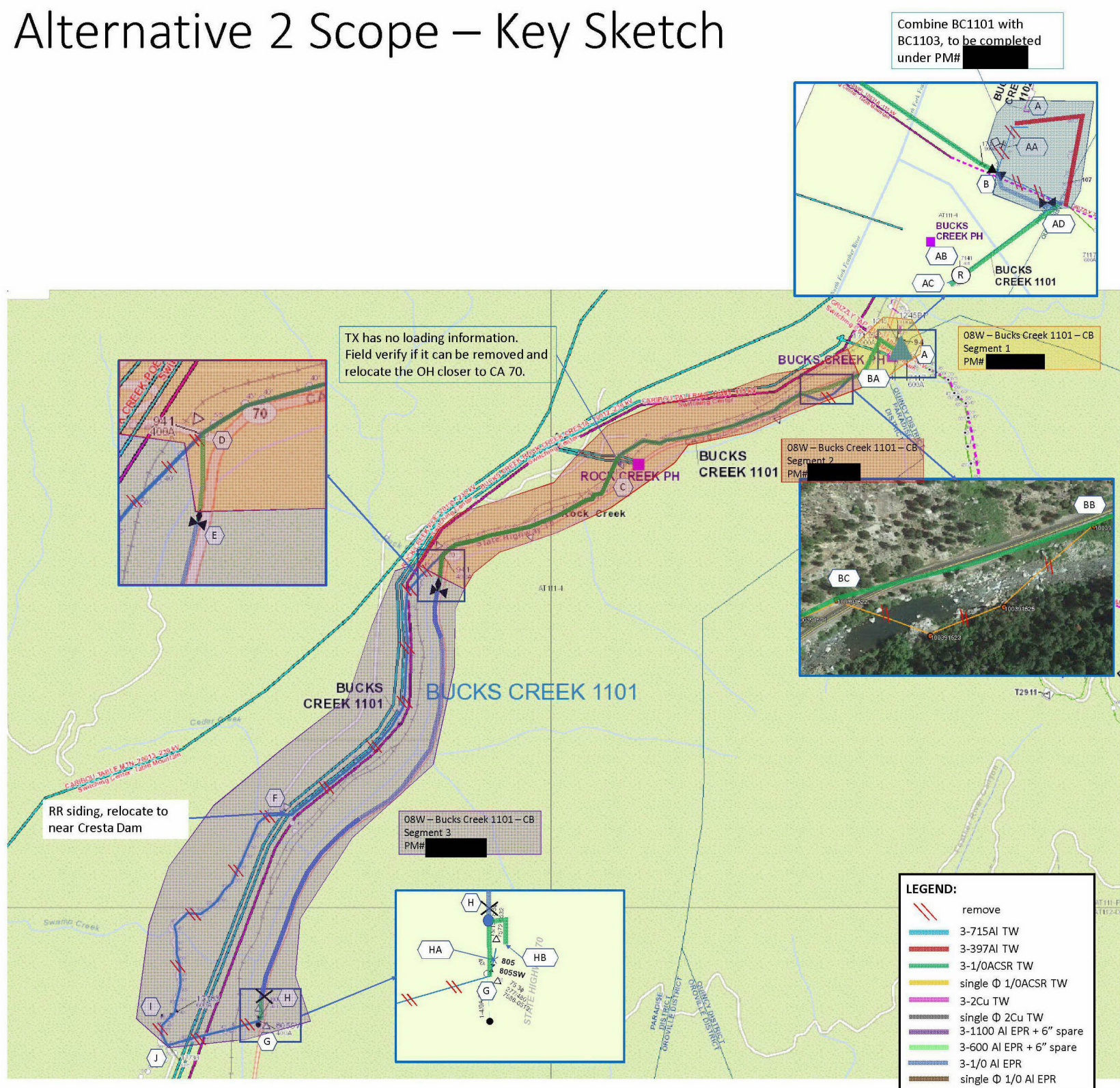
08W – Bucks Creek 1101 – CB Segment 3 PM# [REDACTED]



LEGEND:

	remove
	3-715AI TW
	3-397AI TW
	3-1/0ACSR TW
	single Φ 1/0ACSR TW
	3-2Cu TW
	single Φ 2Cu TW
	3-1100 AI EPR + 6" spare
	3-600 AI EPR + 6" spare
	3-1/0 AI EPR
	single Φ 1/0 AI EPR

Alternative 2 Scope – Key Sketch



Internal