

# System Hardening Field Visits

Dec 14-16, 2020

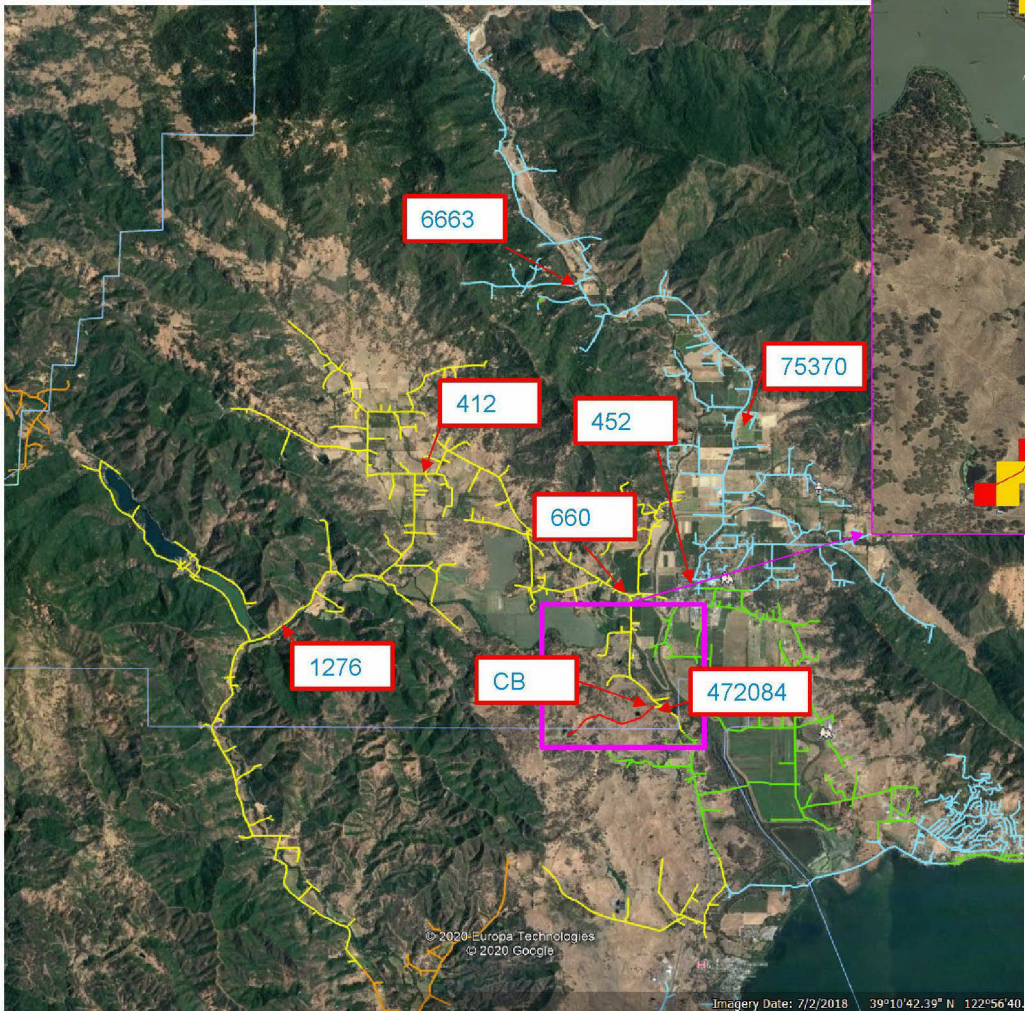
## Finalizing Circuits and contact info



Together, Building  
a Better California



# Upper Lake 1101CB

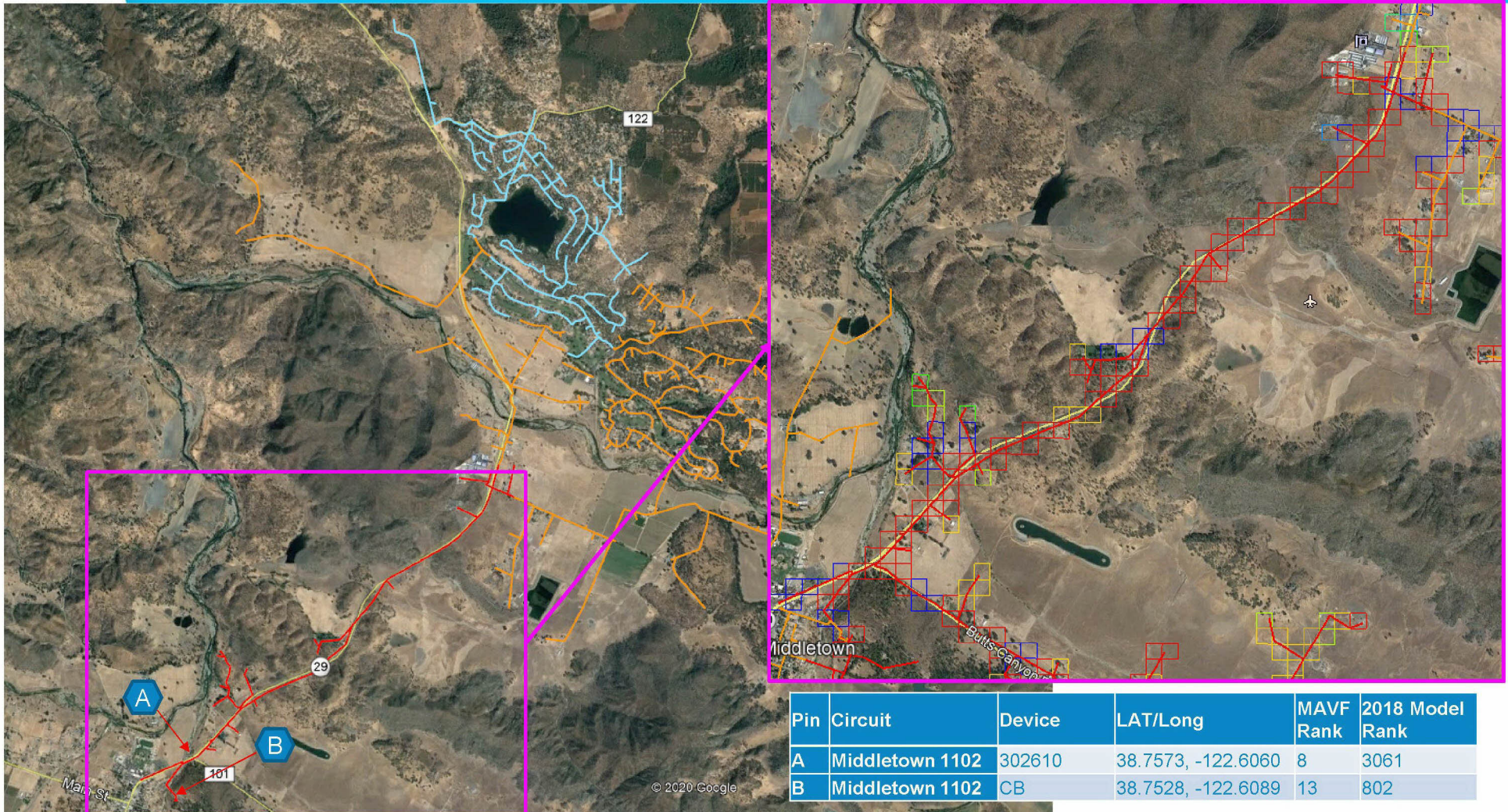


Circuit	Device	Lat/Long	MAVF Rank	2018 Model Rank
Upper Lake 1101	CB	+39.1458, -122.9171	6	1534
Upper Lake 1101	660	+39.1636, -122.9224	202	2506
Upper Lake 1101	412	+39.1825, -122.9620	259	2122
Upper Lake 1101	472084	+39.1456, -122.9162	303	2360
Upper Lake 1101	1276	+39.1586, -122.9889	335	1931
Upper Lake 1101	75370	+39.1893, -122.9008	705	2009
Upper Lake 1101	452	+39.1643, -122.9083	1057	816
Upper Lake 1101	6663	+39.2125, -122.9313	2047	713





# Middletown 1102CB and LR302610

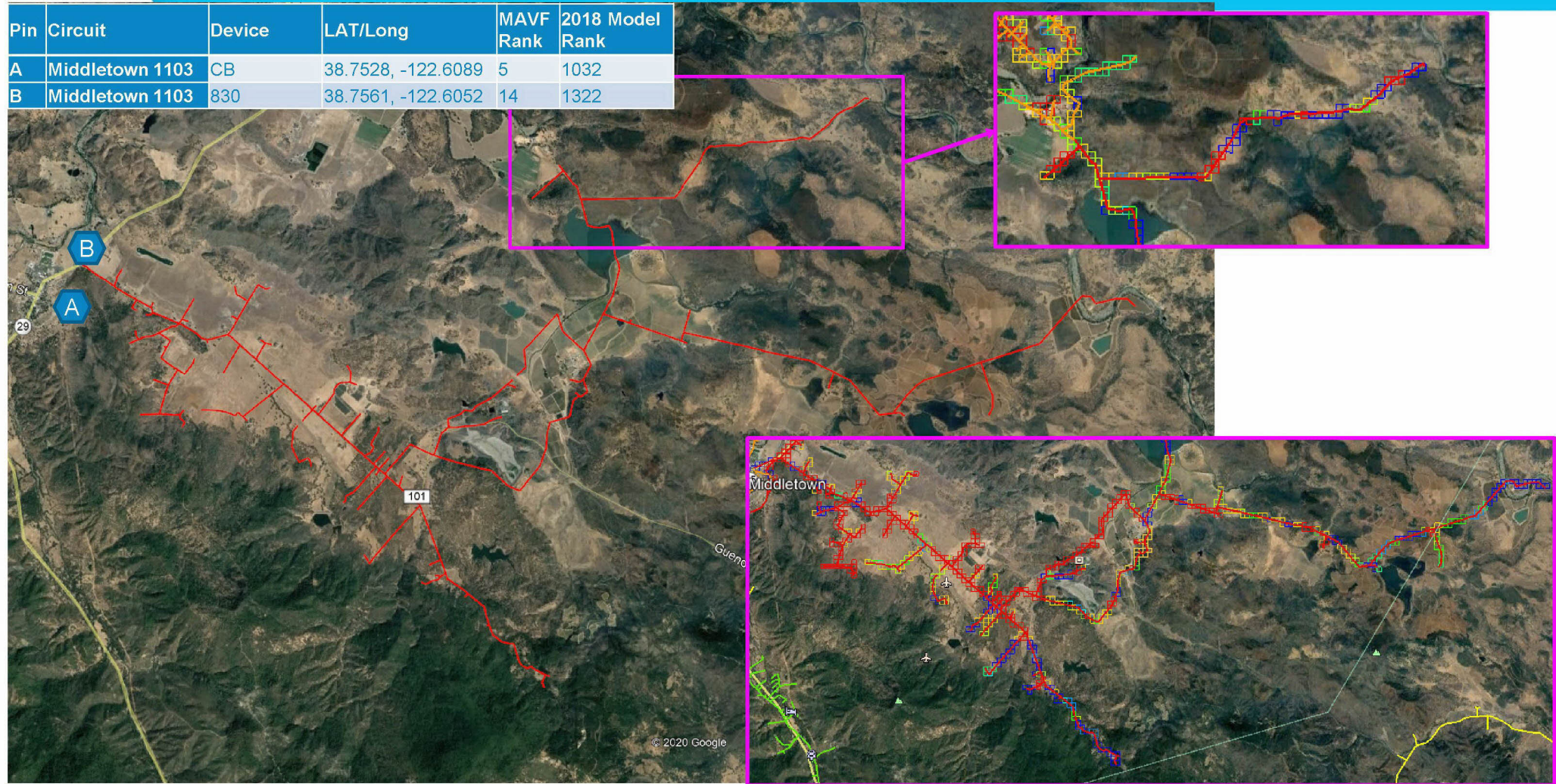






# Middletown 1103CB and LR830

Pin	Circuit	Device	LAT/Long	MAVF Rank	2018 Model Rank
A	Middletown 1103	CB	38.7528, -122.6089	5	1032
B	Middletown 1103	830	38.7561, -122.6052	14	1322







# Fitch Mountain 111324918

Circuit	Device	Lat/Long	MAVF Rank	2018 Model Rank
Fitch Mountain 1113	24918	38.5911, -122.9201	481	209

Orange is LNU Complex Fire Burn Area

End - Lat: 38°35'33.93"N Long: 122°57'50.64"W  
Start - Lat: 38°35'28.34"N Long: 122°55'11.88"W

Green polygon is Fitch Mountain 1113 project zone (PM 74022384)

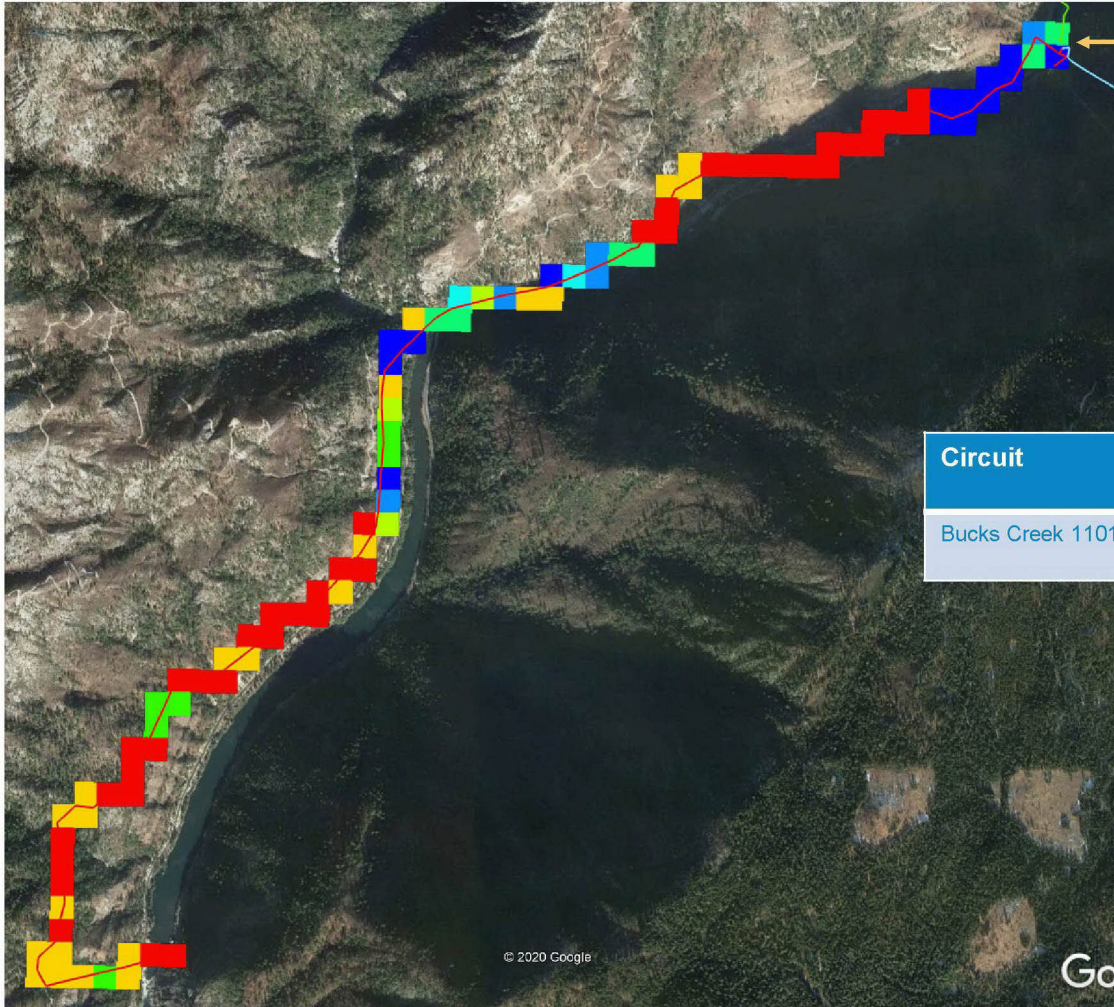
Sonoma

WINNERS





# Bucks Creek 1101CB



+39.9114, -121.3270

Circuit	Device	Lat/Long	MAVF Rank	2018 Model Rank
Bucks Creek 1101	CB	+39.9114 / -121.3270	11	1365