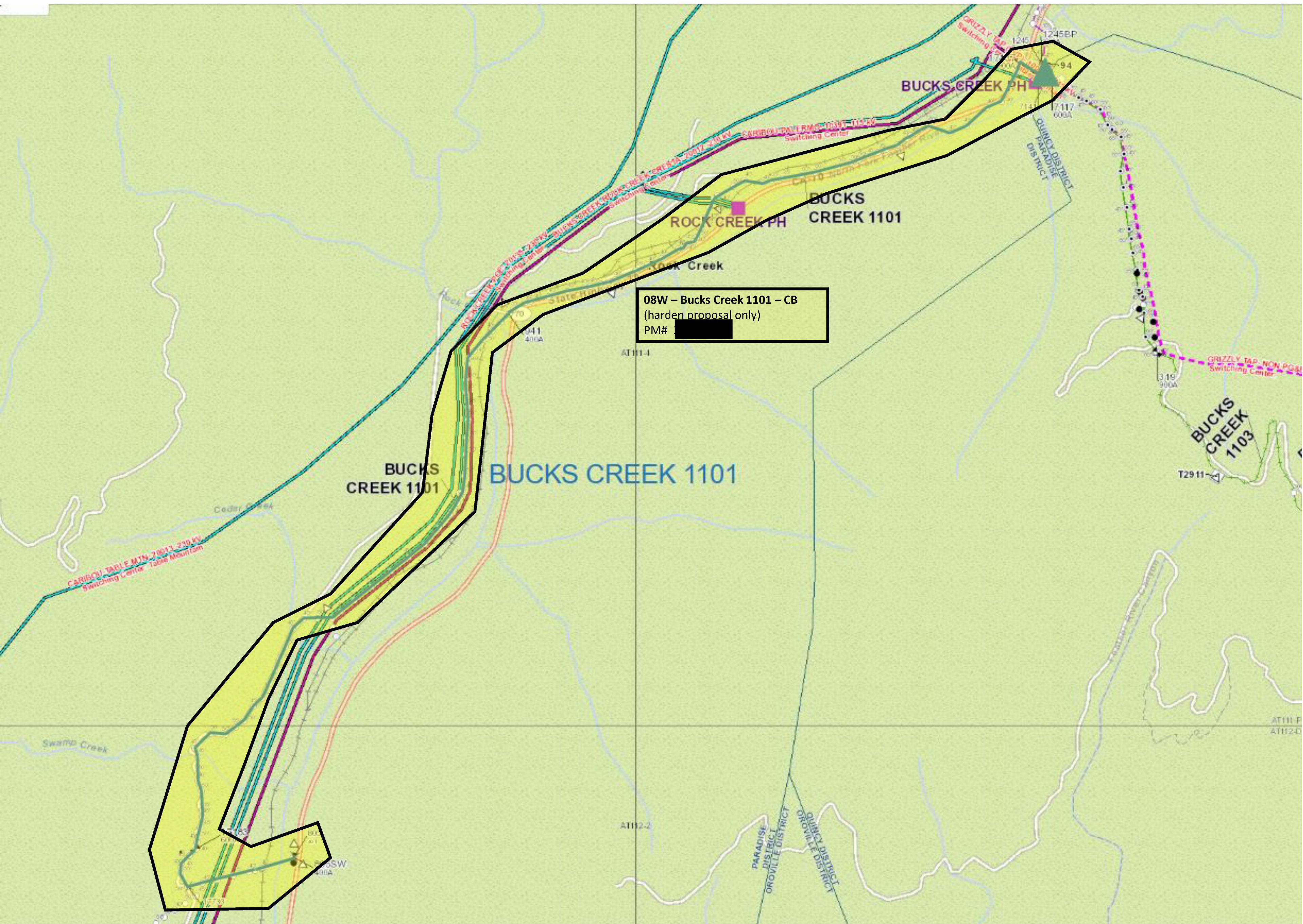
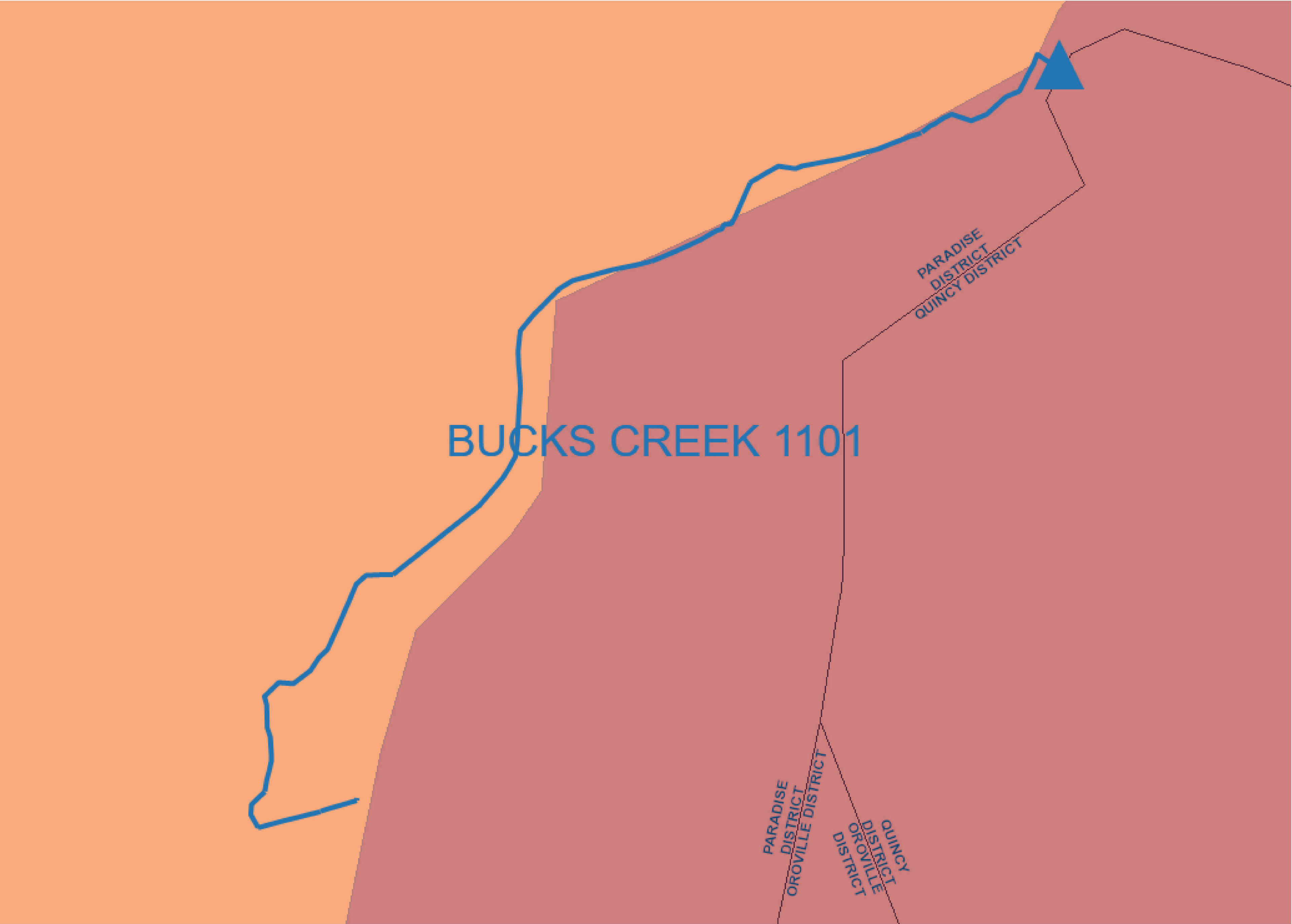


# Bucks Creek 1101- PM# [REDACTED] Overview Map



# Bucks Creek 1101 Fire Tier Map

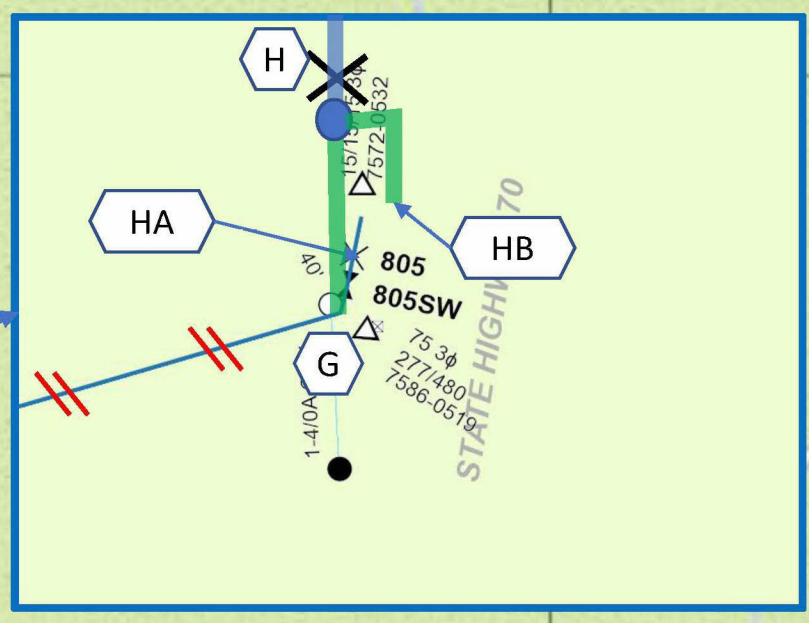
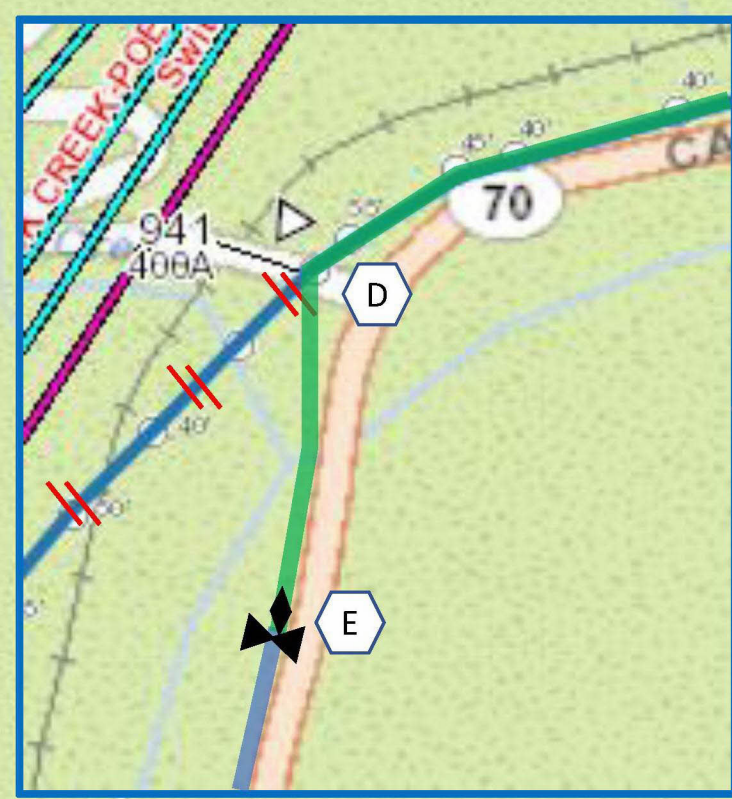
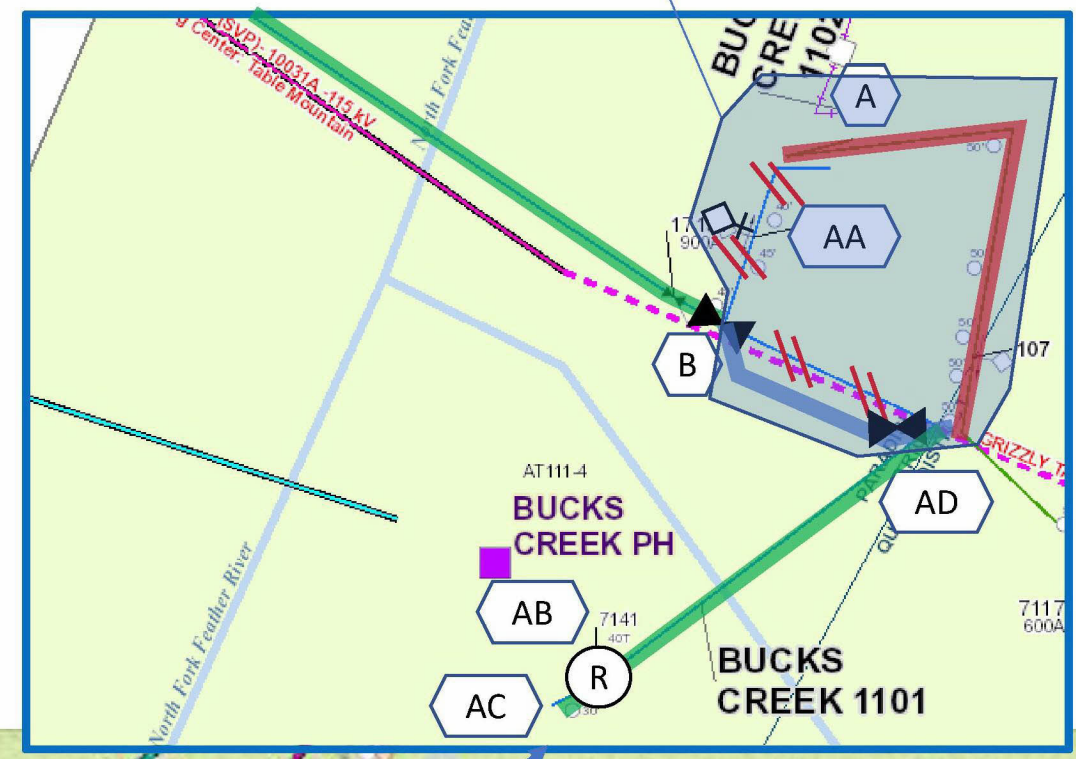
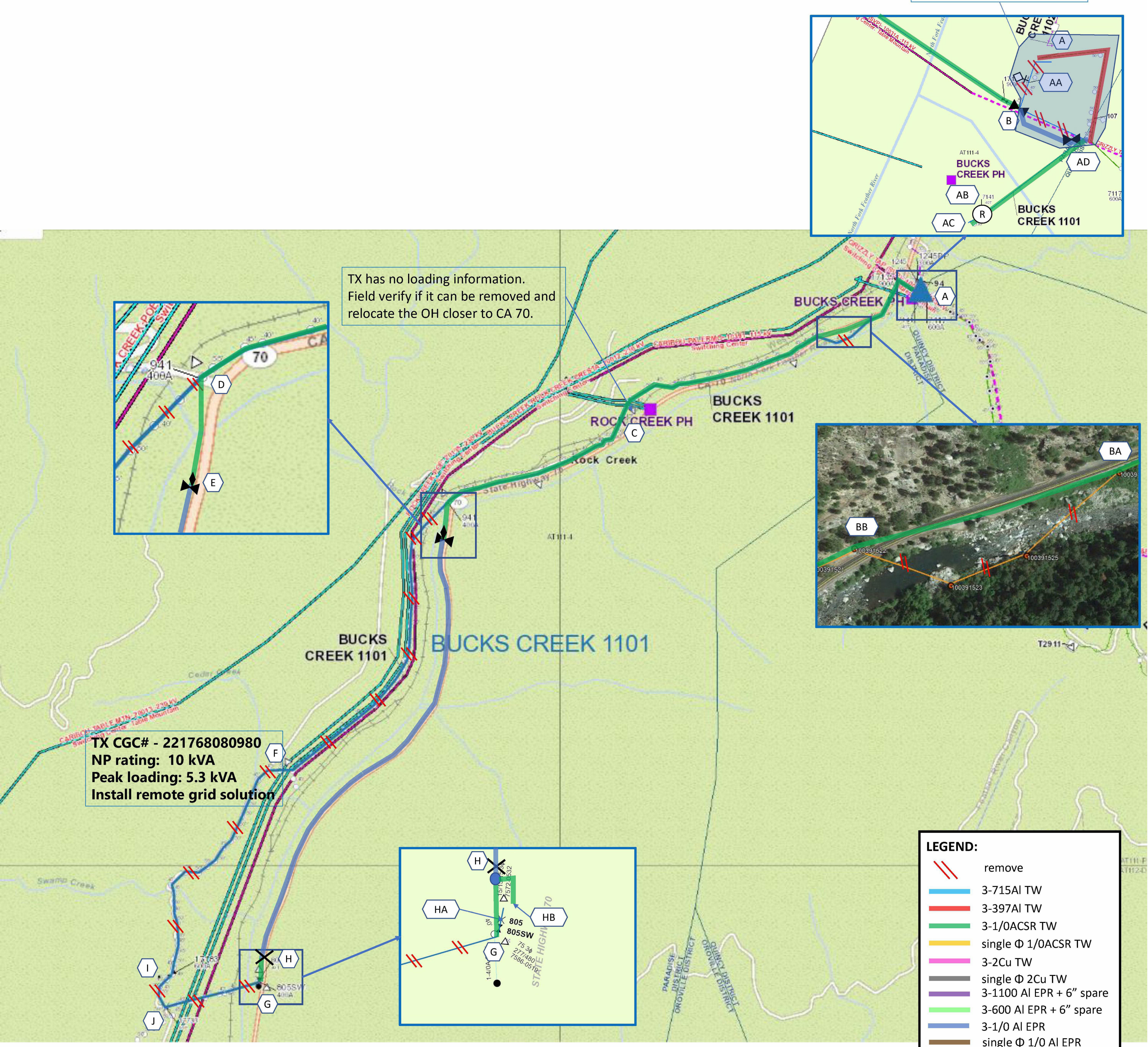


# Satellite View



# Preferred Scope – Key Sketch

Combine BC1101 with BC1103, to be completed under PM# [REDACTED]



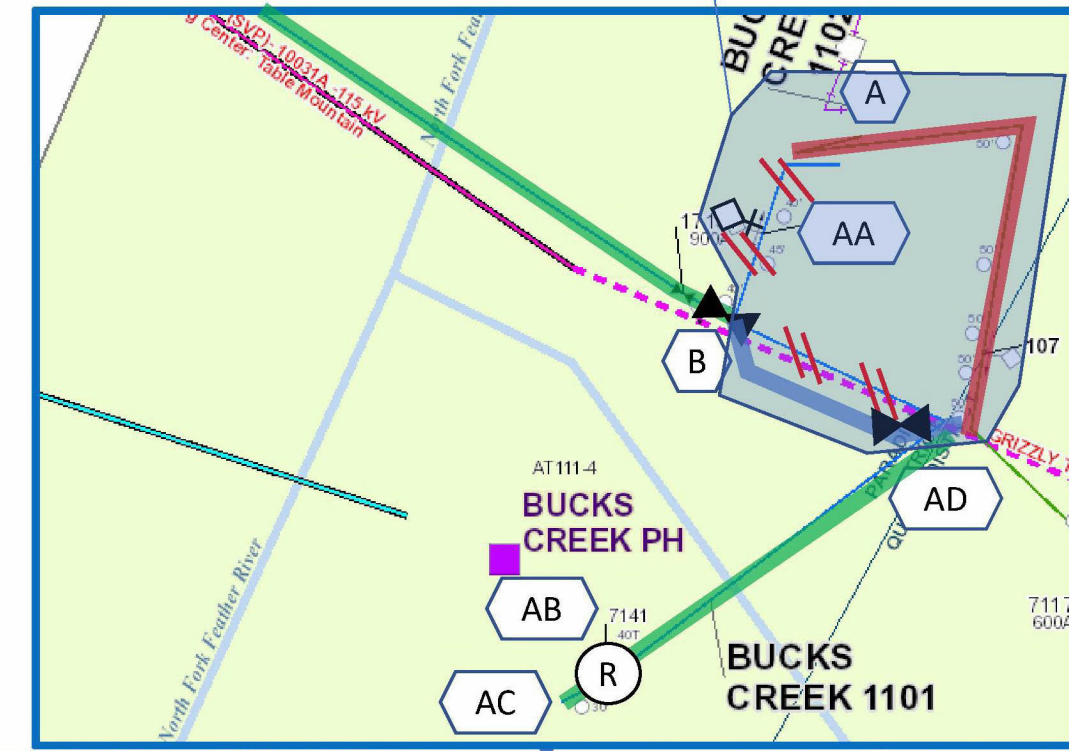
**TX CGC# - 221768080980**  
**NP rating: 10 kVA**  
**Peak loading: 5.3 kVA**  
**Install remote grid solution**

TX has no loading information.  
 Field verify if it can be removed and relocate the OH closer to CA 70.

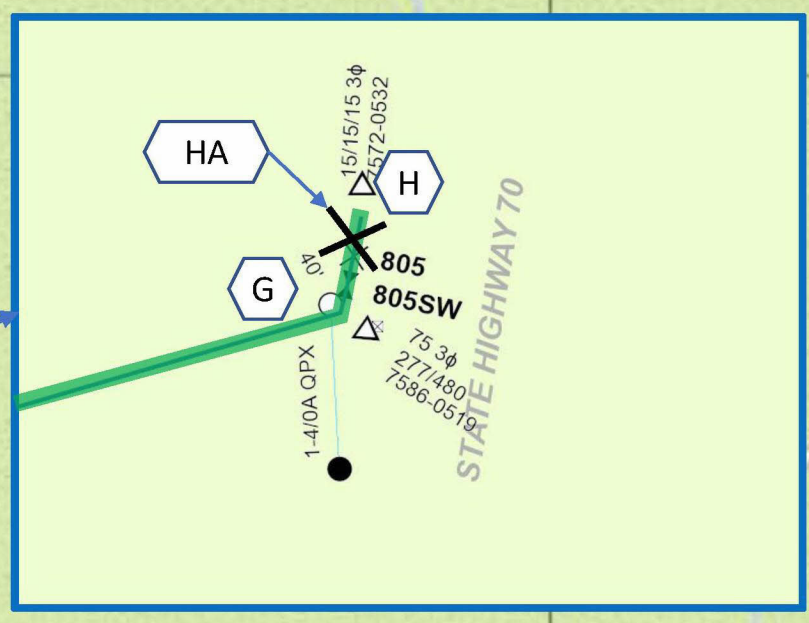
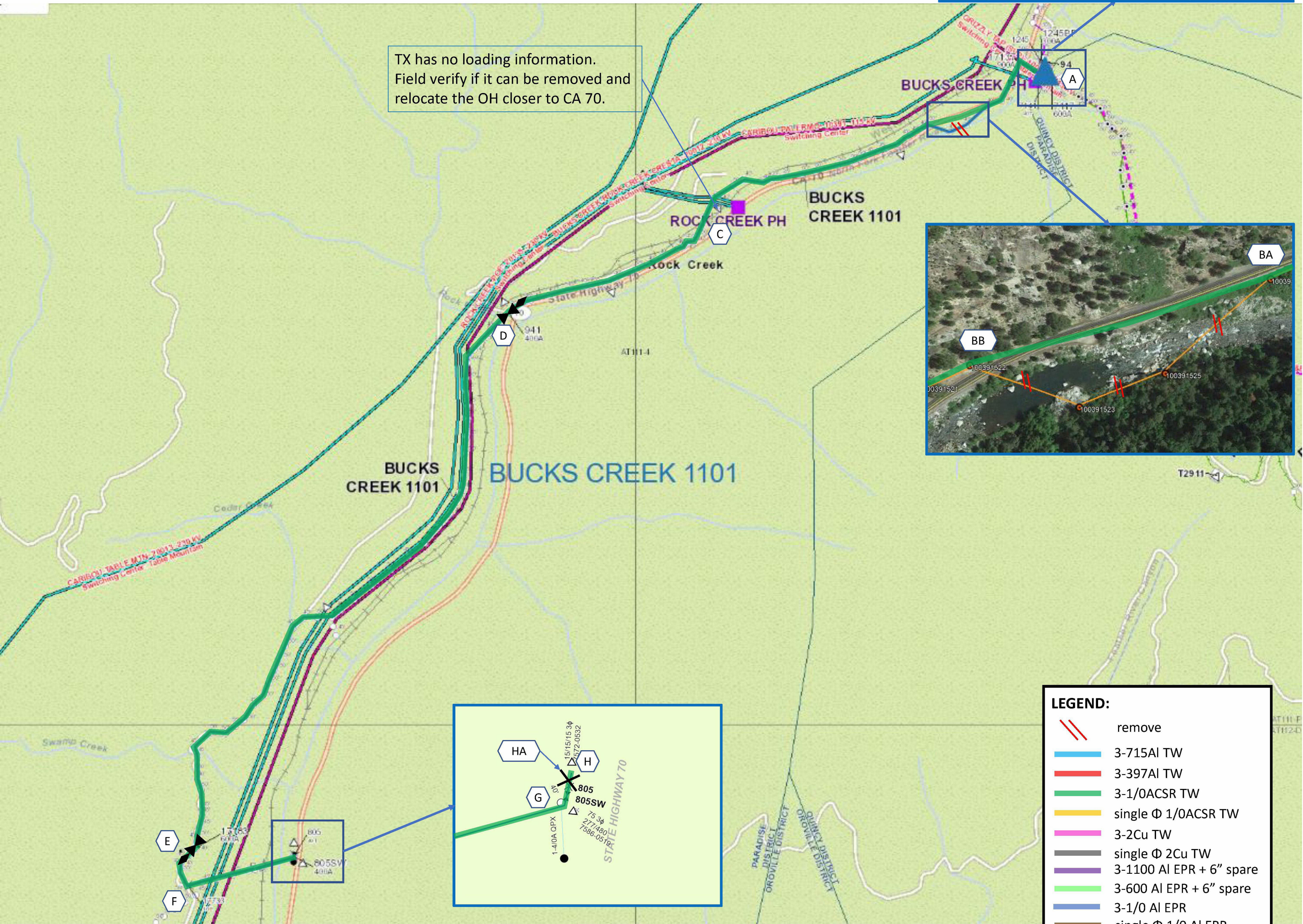
- LEGEND:**
- remove
  - 3-715AI TW
  - 3-397AI TW
  - 3-1/0ACSR TW
  - single  $\Phi$  1/0ACSR TW
  - 3-2Cu TW
  - single  $\Phi$  2Cu TW
  - 3-1100 AI EPR + 6" spare
  - 3-600 AI EPR + 6" spare
  - 3-1/0 AI EPR
  - single  $\Phi$  1/0 AI EPR

# Alternative 1 Scope – Key Sketch

Combine BC1101 with BC1103, to be completed under PM# [REDACTED]



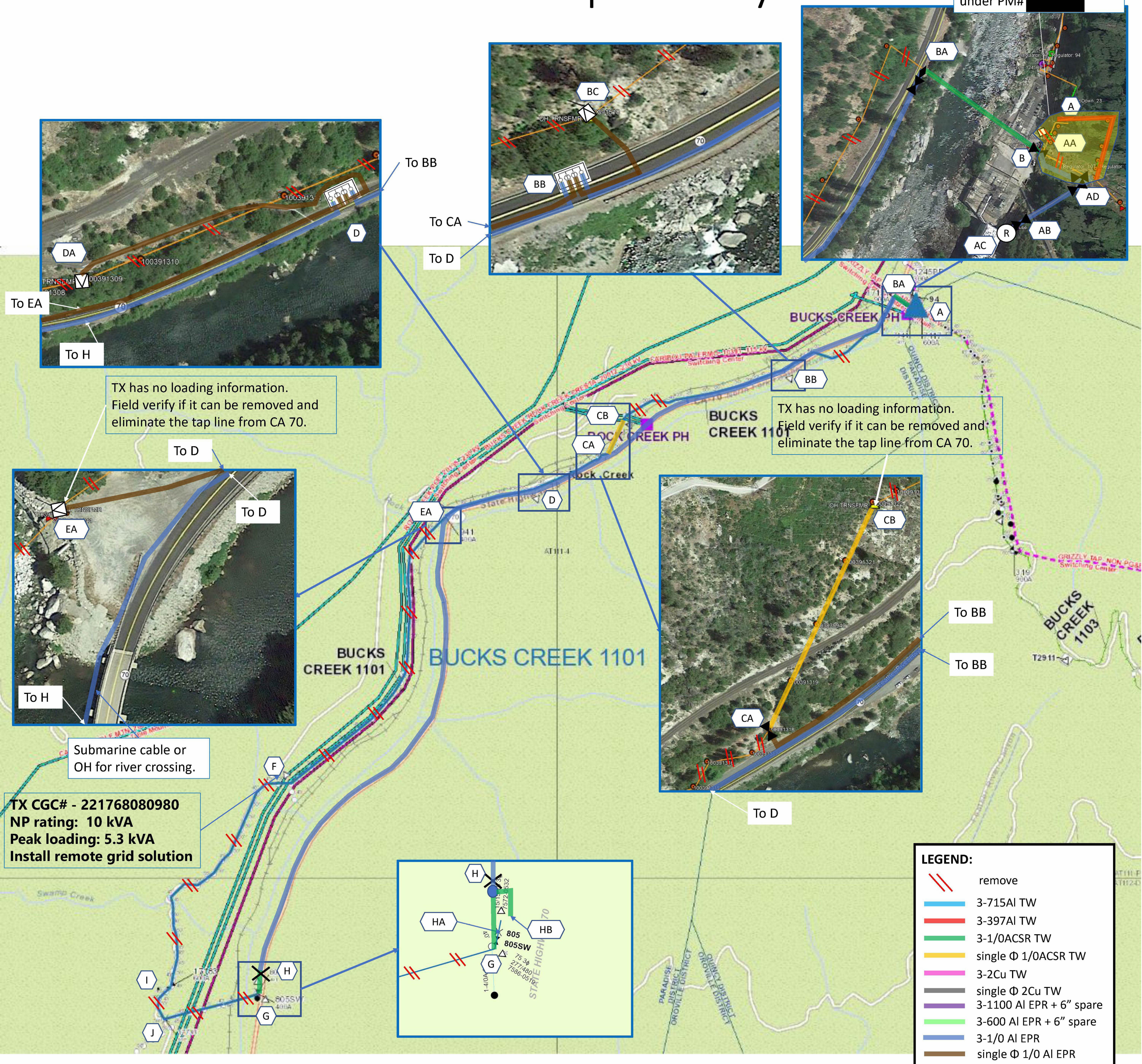
TX has no loading information. Field verify if it can be removed and relocate the OH closer to CA 70.



- LEGEND:**
- remove
  - 3-715AI TW
  - 3-397AI TW
  - 3-1/0ACSR TW
  - single  $\Phi$  1/0ACSR TW
  - 3-2Cu TW
  - single  $\Phi$  2Cu TW
  - 3-1100 AI EPR + 6" spare
  - 3-600 AI EPR + 6" spare
  - 3-1/0 AI EPR
  - single  $\Phi$  1/0 AI EPR

# Alternative 2 Scope – Key Sketch

Combine BC1101 with BC1103, to be completed under PM# [REDACTED]



**LEGEND:**

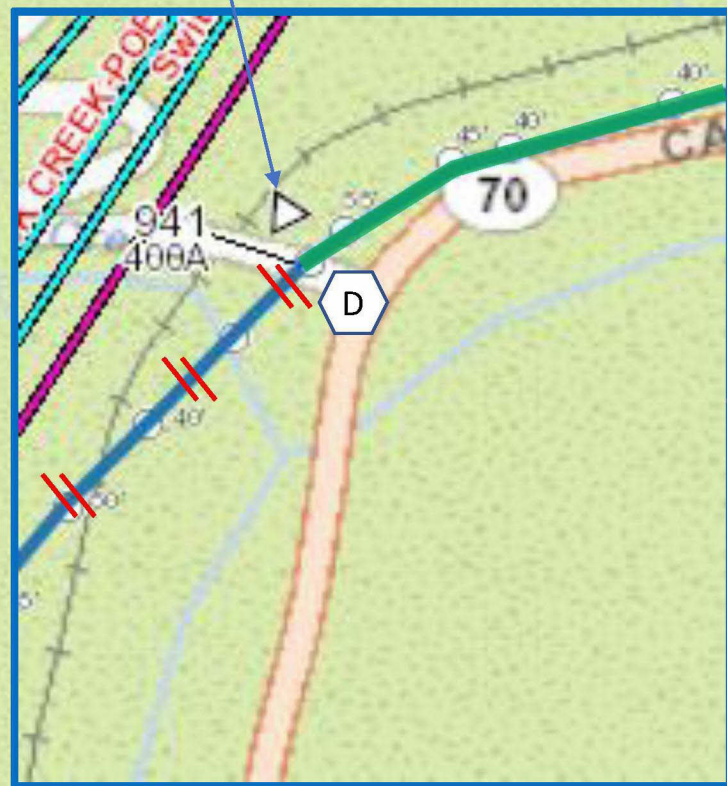
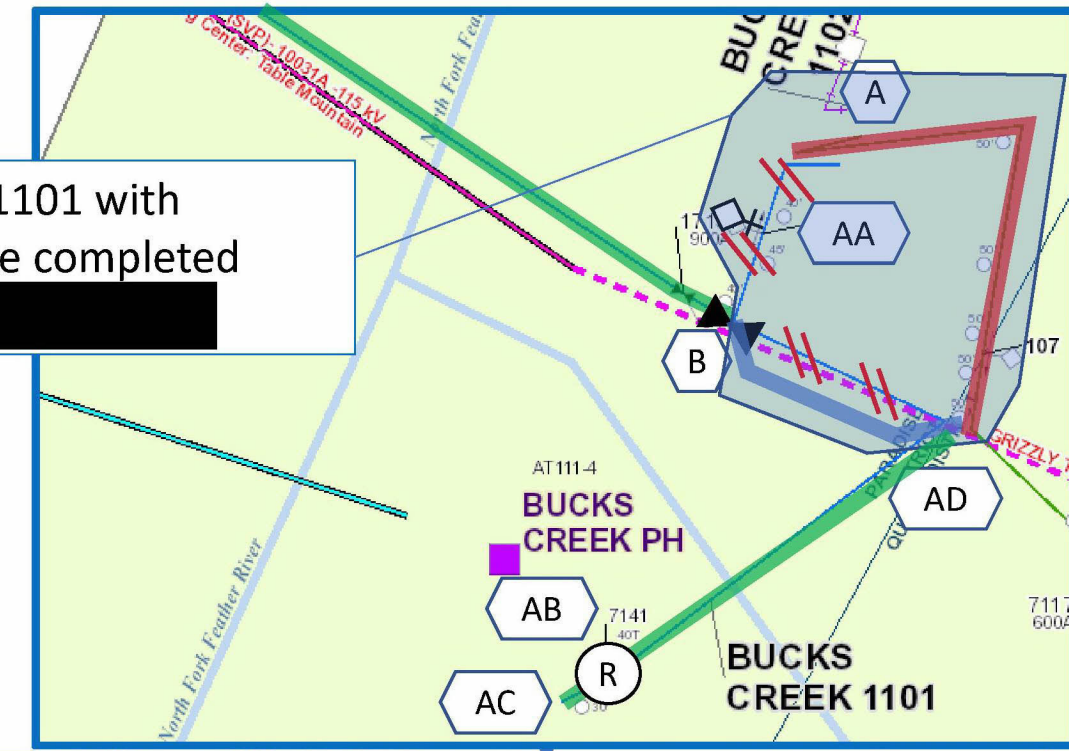
	remove
	3-715AI TW
	3-397AI TW
	3-1/0ACSR TW
	single $\Phi$ 1/0ACSR TW
	3-2Cu TW
	single $\Phi$ 2Cu TW
	3-1100 AI EPR + 6" spare
	3-600 AI EPR + 6" spare
	3-1/0 AI EPR
	single $\Phi$ 1/0 AI EPR

# Alternative 3 Scope – Key Sketch

TX has no loading information.  
Field verify if it can be removed and eliminate OH between Loc CA and Loc D.

TX has no loading information.  
Field verify if it can be removed and relocate the OH closer to CA 70.

Combine BC1101 with BC1103, to be completed under PM# [REDACTED]



**TX CGC# - 221768080980**  
NP rating: 10 kVA  
Peak loading: 5.3 kVA  
Install remote grid solution

**TX CGC# - 221757280532**  
NP rating: 15 kVA 3ph  
Peak loading: N/A

**TX CGC# - 221758680519**  
NP rating: 75 kVA  
Peak loading: 58 kVA

Install remote grid solution for Loc G & H

## LEGEND:

- remove
- 3-715AI TW
- 3-397AI TW
- 3-1/0ACSR TW
- single  $\Phi$  1/0ACSR TW
- 3-2Cu TW
- single  $\Phi$  2Cu TW
- 3-1100 AI EPR + 6" spare
- 3-600 AI EPR + 6" spare
- 3-1/0 AI EPR
- single  $\Phi$  1/0 AI EPR