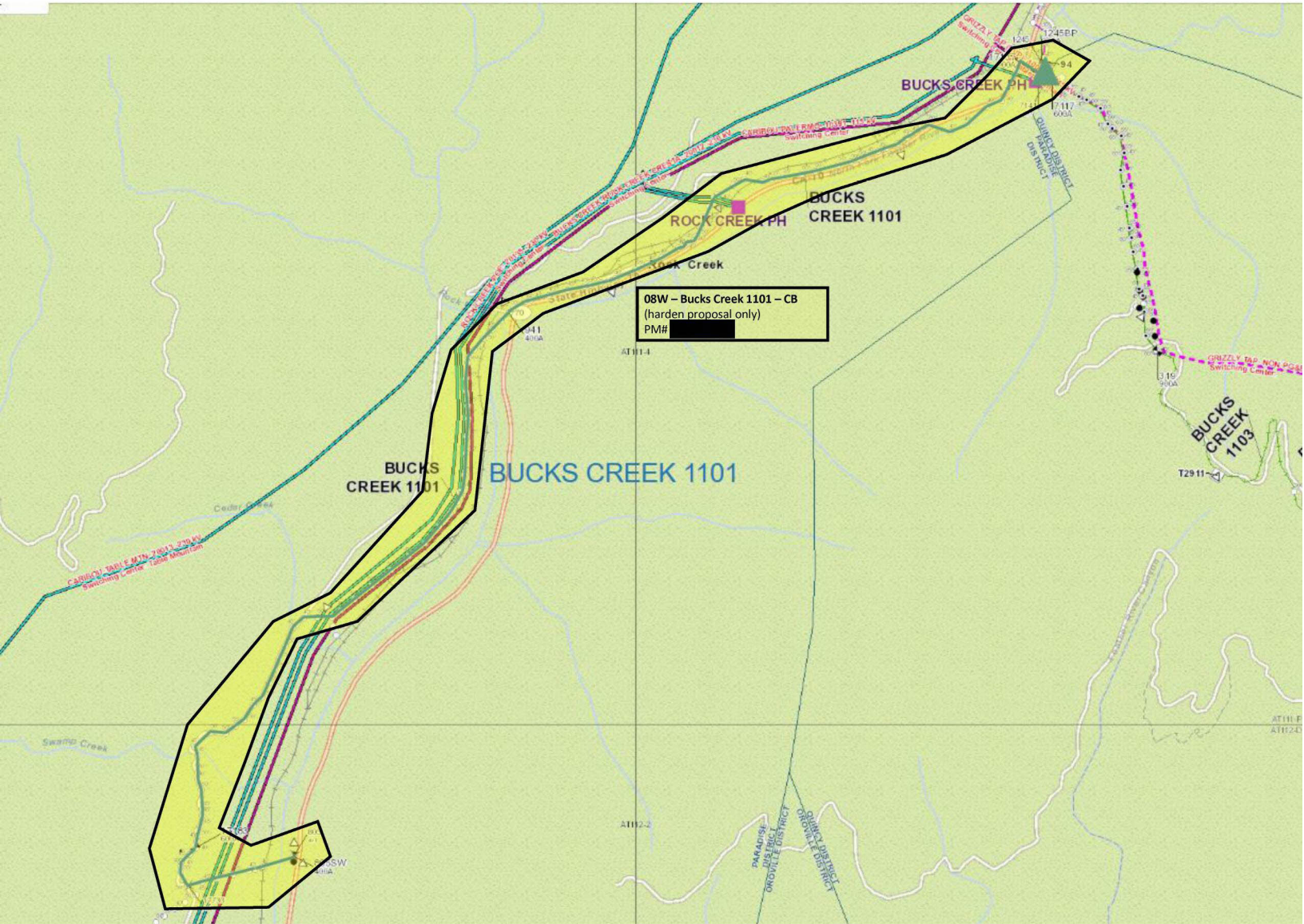
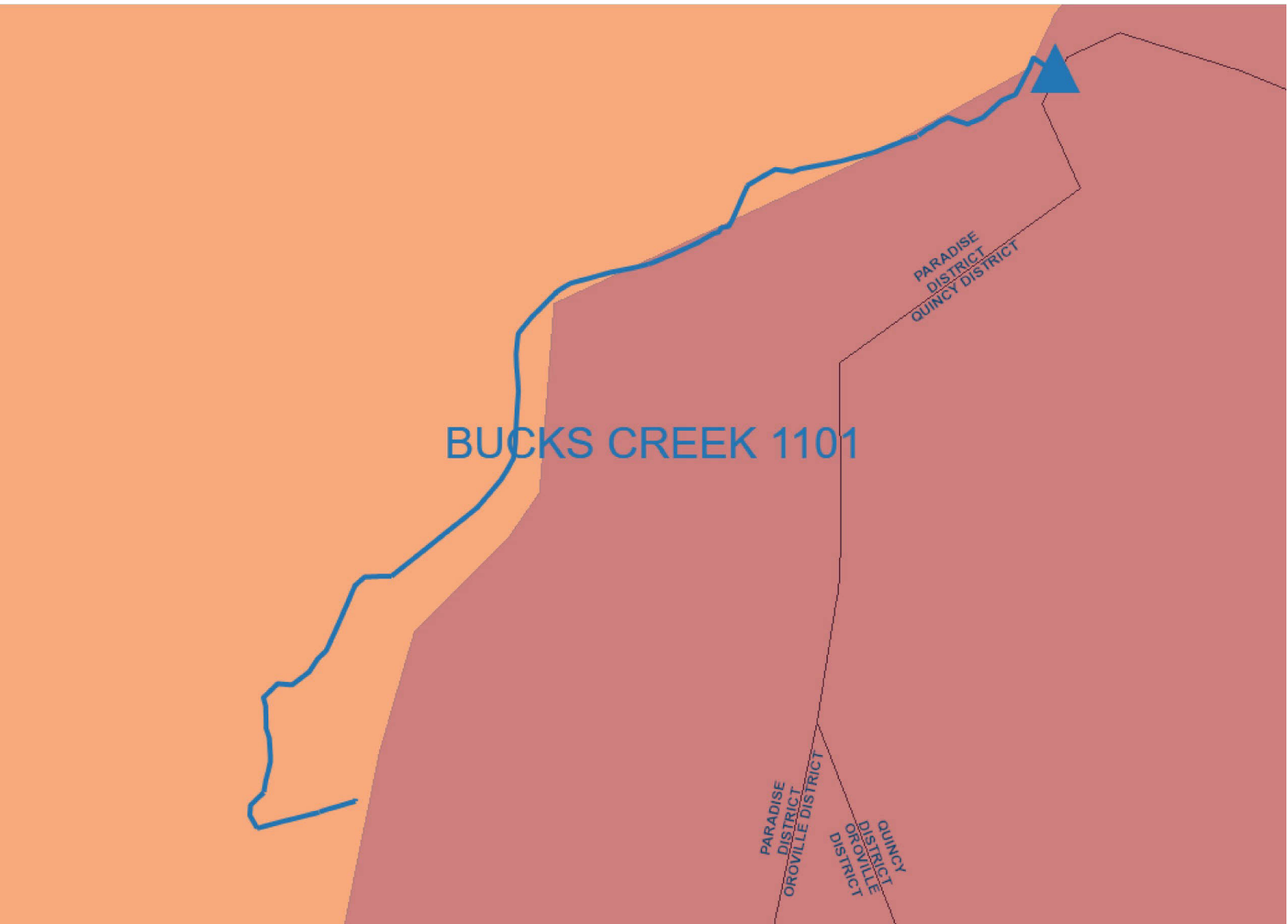


Bucks Creek 1101- PM# [REDACTED] Overview Map



Internal

Bucks Creek 1101 Fire Tier Map



Internal

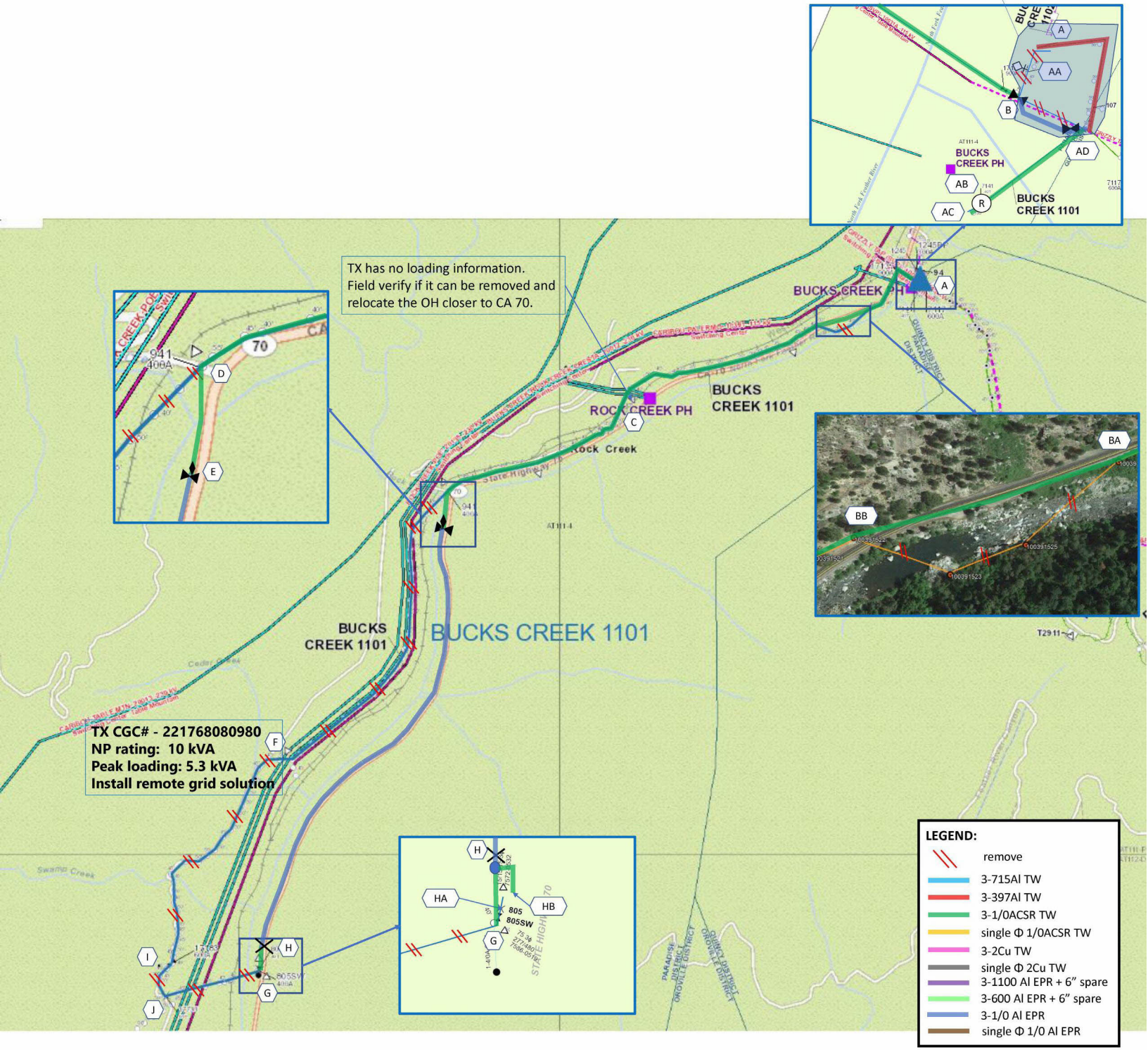
Satellite View



Internal

Preferred Scope – Key Sketch

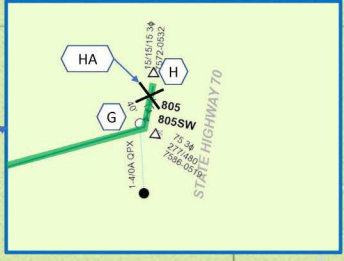
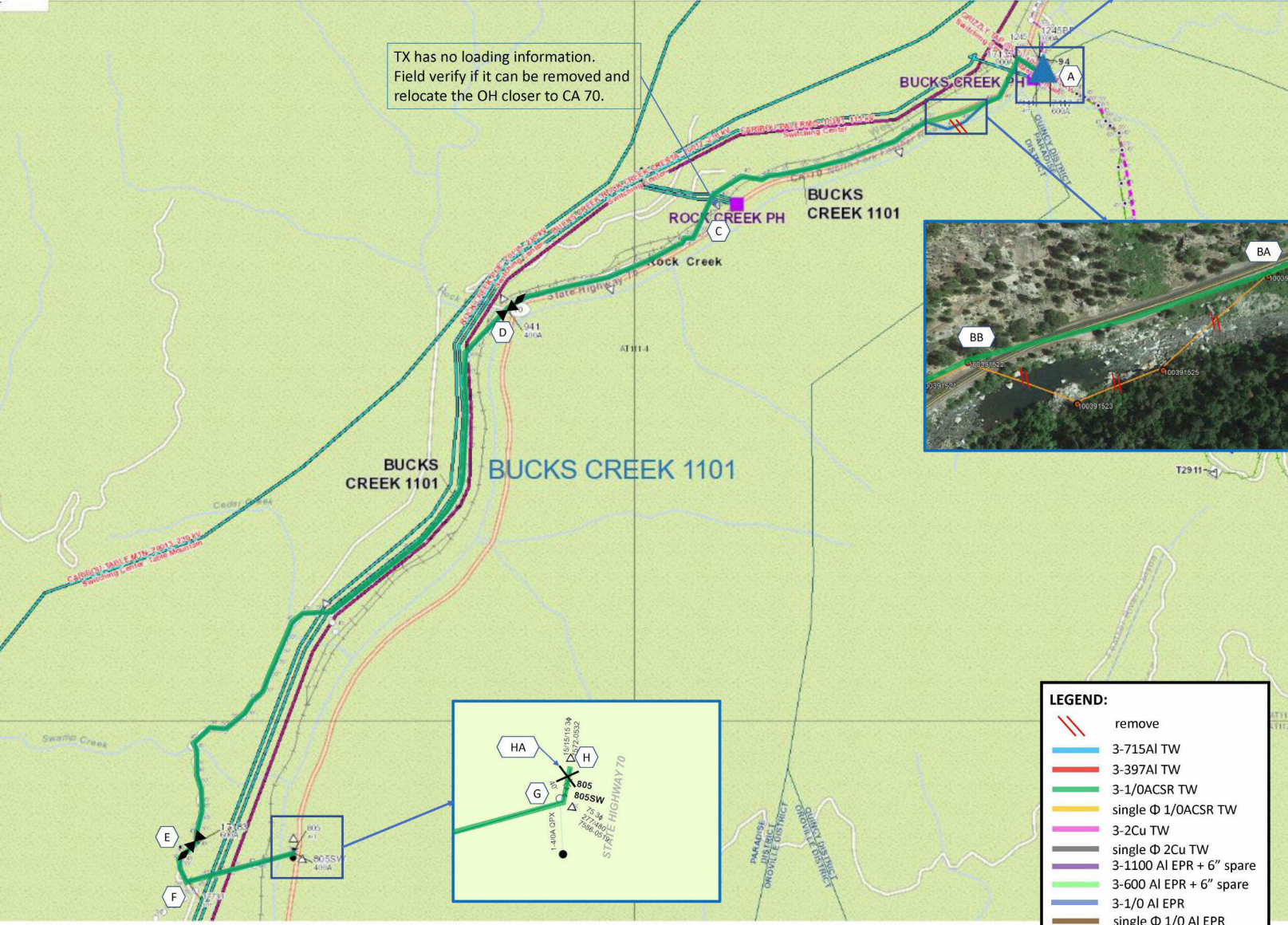
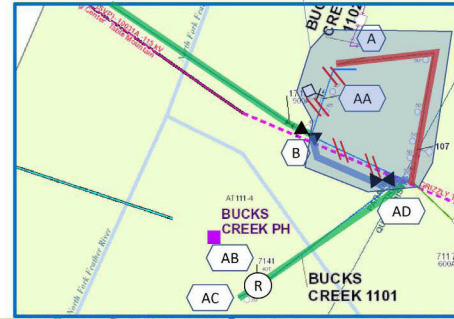
Combine BC1101 with BC1103, to be completed under PM# [REDACTED]



Internal

Alternative 1 Scope – Key Sketch

Combine BC1101 with BC1103, to be completed under PM# [REDACTED]



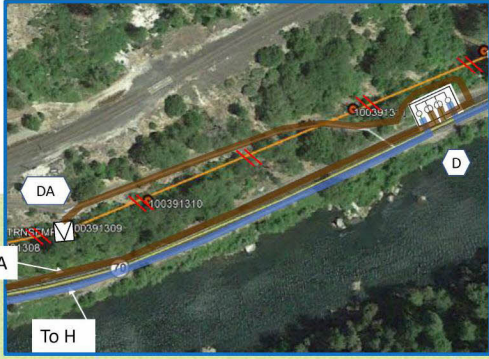
LEGEND:

- remove
- 3-715AI TW
- 3-397AI TW
- 3-1/0ACSR TW
- single Φ 1/0ACSR TW
- 3-2Cu TW
- single Φ 2Cu TW
- 3-1100 AI EPR + 6" spare
- 3-600 AI EPR + 6" spare
- 3-1/0 AI EPR
- single Φ 1/0 AI EPR

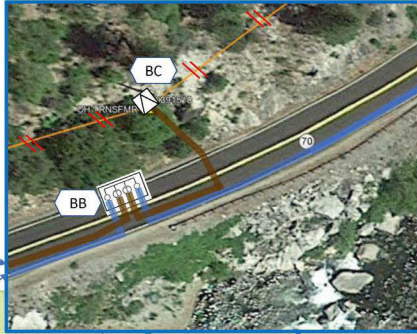
Internal

Alternative 2 Scope – Key Sketch

Combine BC1101 with BC1103, to be completed under PM# [REDACTED]

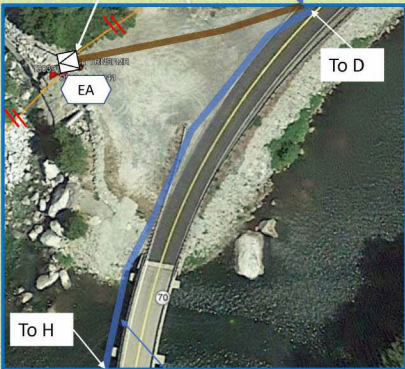


To BB
To CA
To D

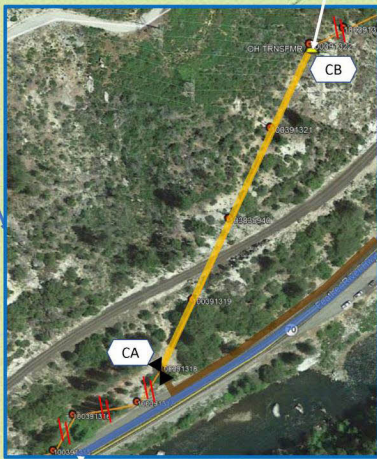


TX has no loading information. Field verify if it can be removed and eliminate the tap line from CA 70.

TX has no loading information. Field verify if it can be removed and eliminate the tap line from CA 70.



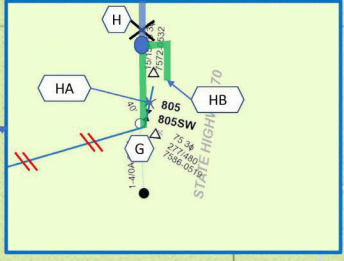
To D



To D

Submarine cable or OH for river crossing.

TX CGC# - 221768080980
NP rating: 10 kVA
Peak loading: 5.3 kVA
Install remote grid solution



LEGEND:

	remove
	3-715AI TW
	3-397AI TW
	3-1/0ACSR TW
	single Φ 1/0ACSR TW
	3-2Cu TW
	single Φ 2Cu TW
	3-1100 AI EPR + 6" spare
	3-600 AI EPR + 6" spare
	3-1/0 AI EPR
	single Φ 1/0 AI EPR

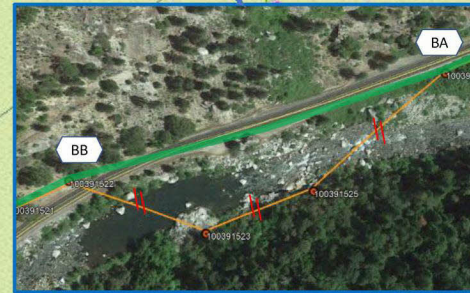
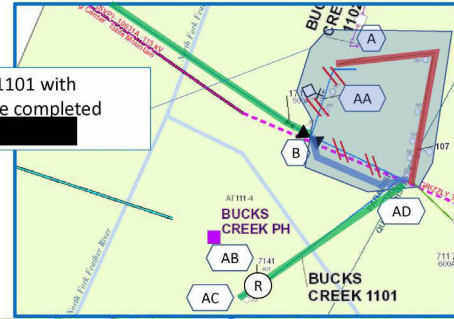
Internal

Alternative 3 Scope – Key Sketch

TX has no loading information.
Field verify if it can be removed and eliminate OH between Loc CA and Loc D.

TX has no loading information.
Field verify if it can be removed and relocate the OH closer to CA 70.

Combine BC1101 with BC1103, to be completed under PM# [REDACTED]



TX CGC# - 221768080980
NP rating: 10 kVA
Peak loading: 5.3 kVA
Install remote grid solution

TX CGC# - 221757280532
NP rating: 15 kVA 3ph
Peak loading: N/A

TX CGC# - 221758680519
NP rating: 75 kVA
Peak loading: 58 kVA

Install remote grid solution for Loc G & H

LEGEND:

	remove
	3-715AI TW
	3-397AI TW
	3-1/OACSR TW
	single Φ 1/OACSR TW
	3-2Cu TW
	single Φ 2Cu TW
	3-1100 AI EPR + 6" spare
	3-600 AI EPR + 6" spare
	3-1/O AI EPR
	single Φ 1/O AI EPR

Internal