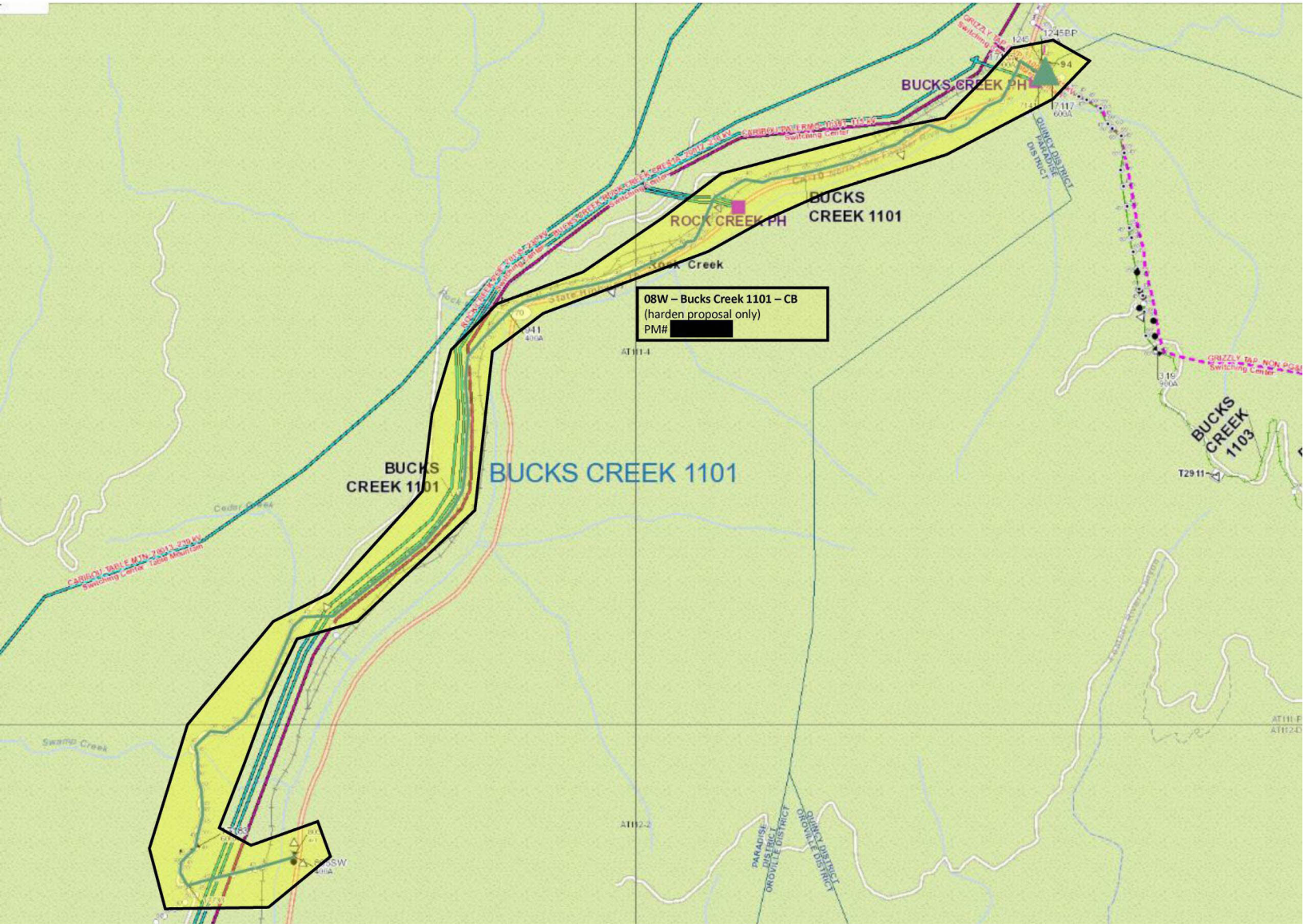
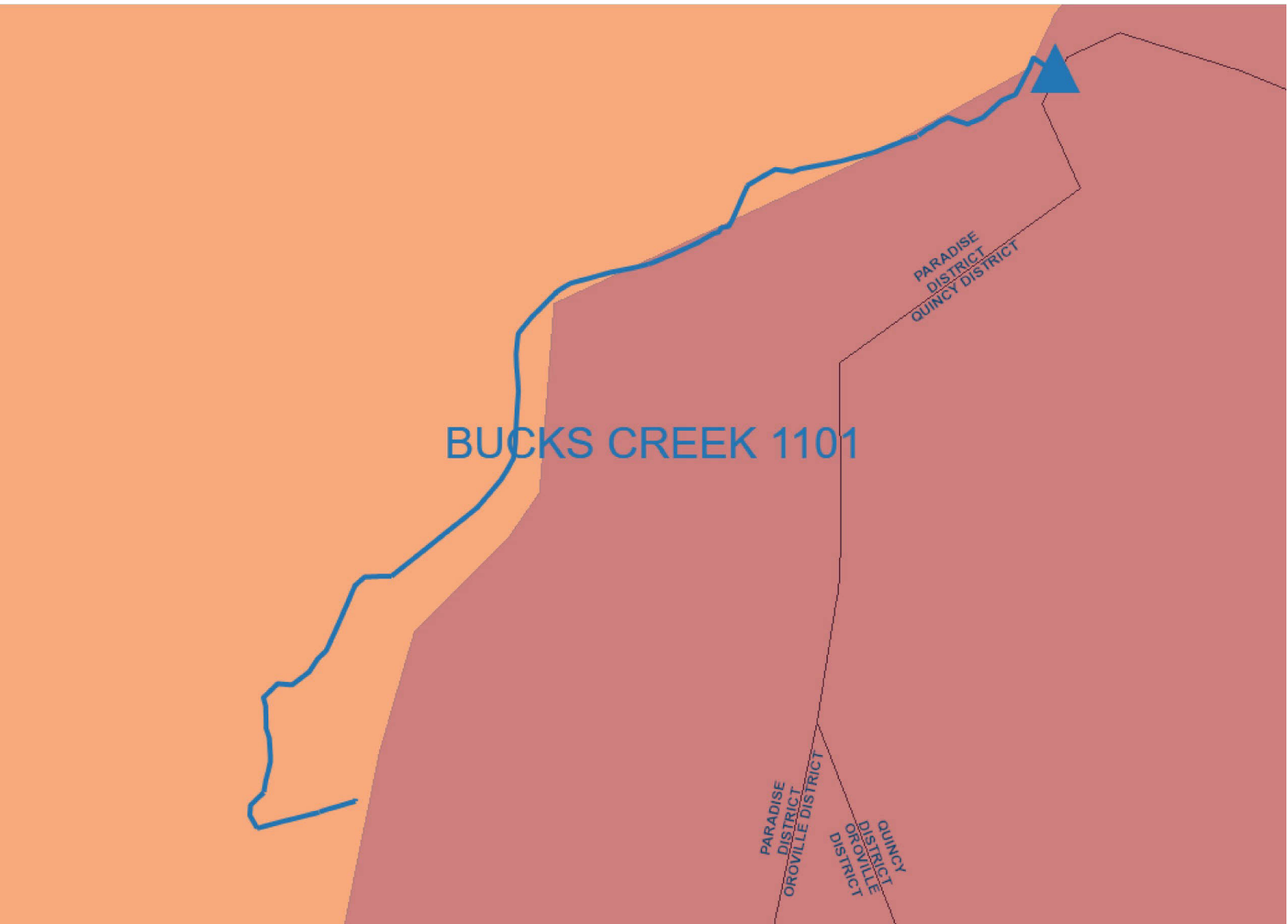


# Bucks Creek 1101- PM# [REDACTED] Overview Map



Internal

# Bucks Creek 1101 Fire Tier Map



Internal

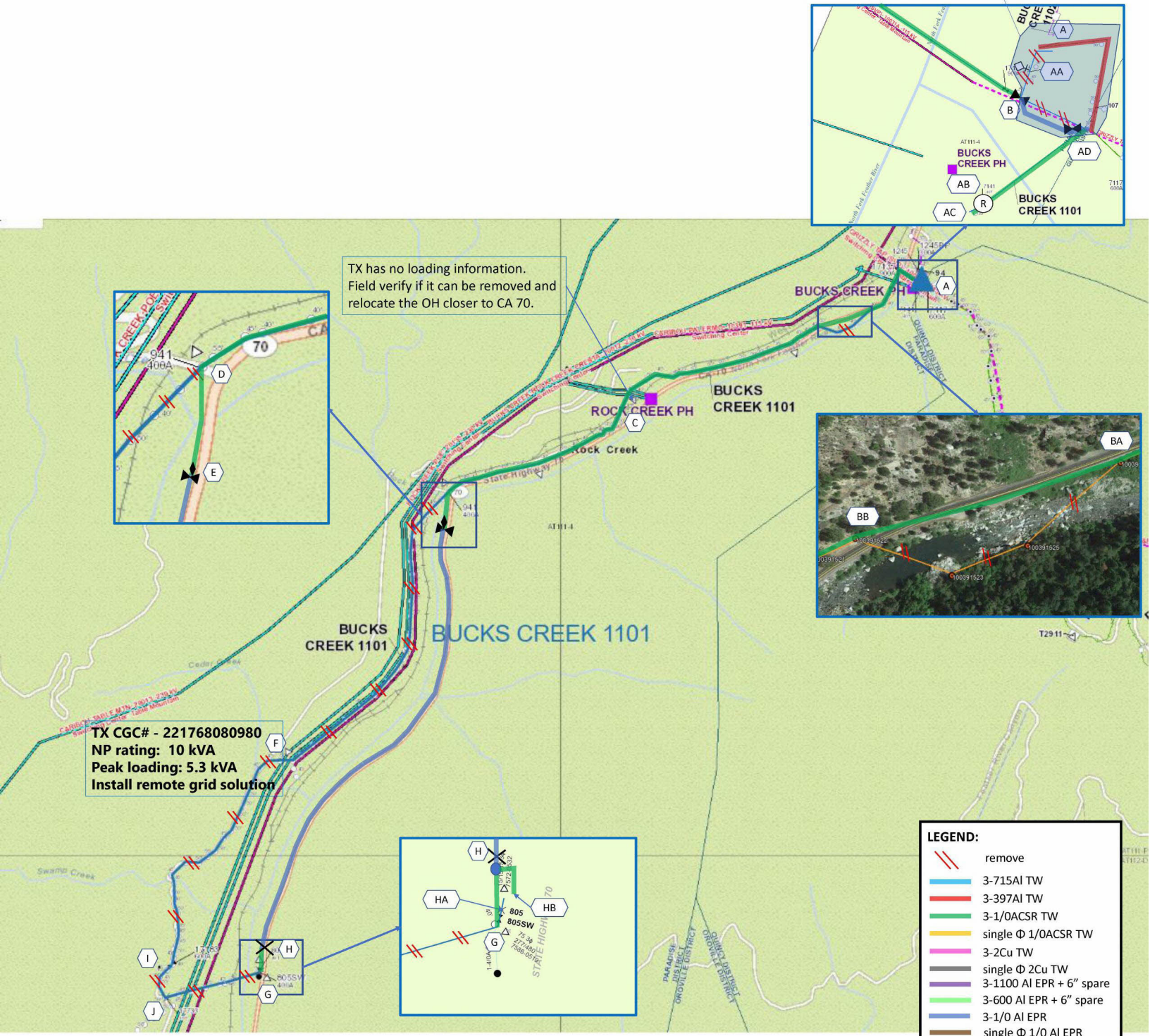
# Satellite View



Internal

# Preferred Scope – Key Sketch

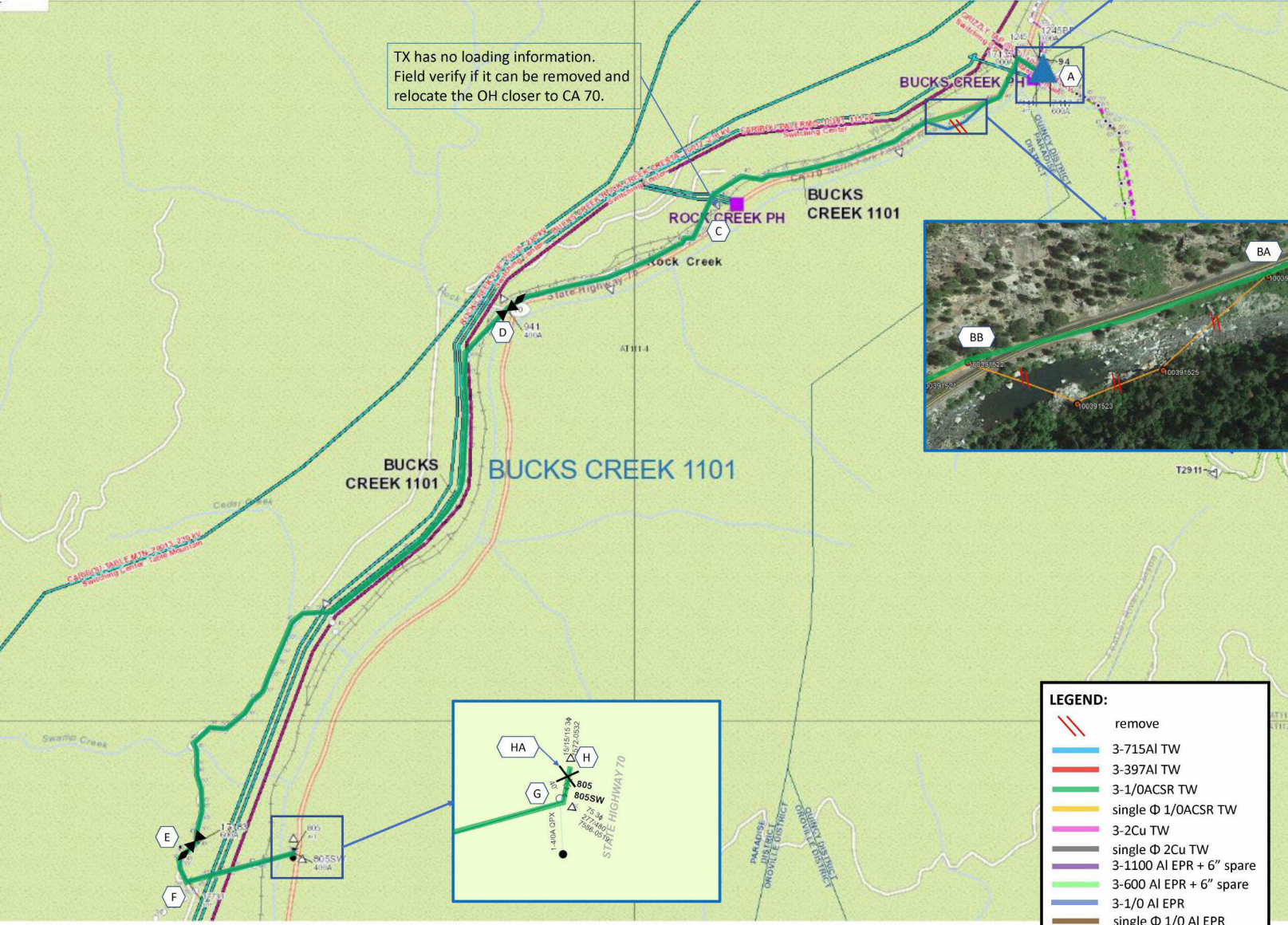
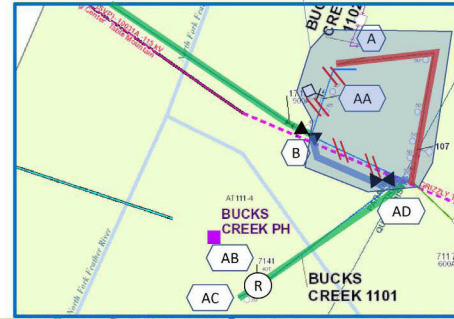
Combine BC1101 with BC1103, to be completed under PM# [REDACTED]



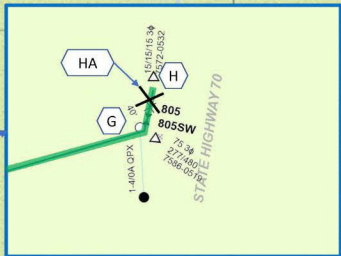
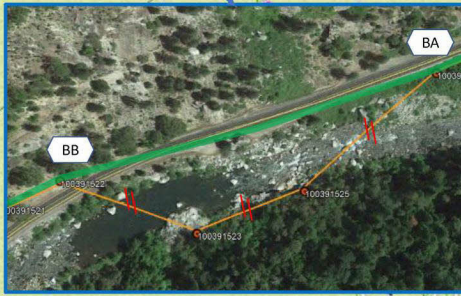
Internal

# Alternative 1 Scope – Key Sketch

Combine BC1101 with BC1103, to be completed under PM# [REDACTED]



TX has no loading information. Field verify if it can be removed and relocate the OH closer to CA 70.



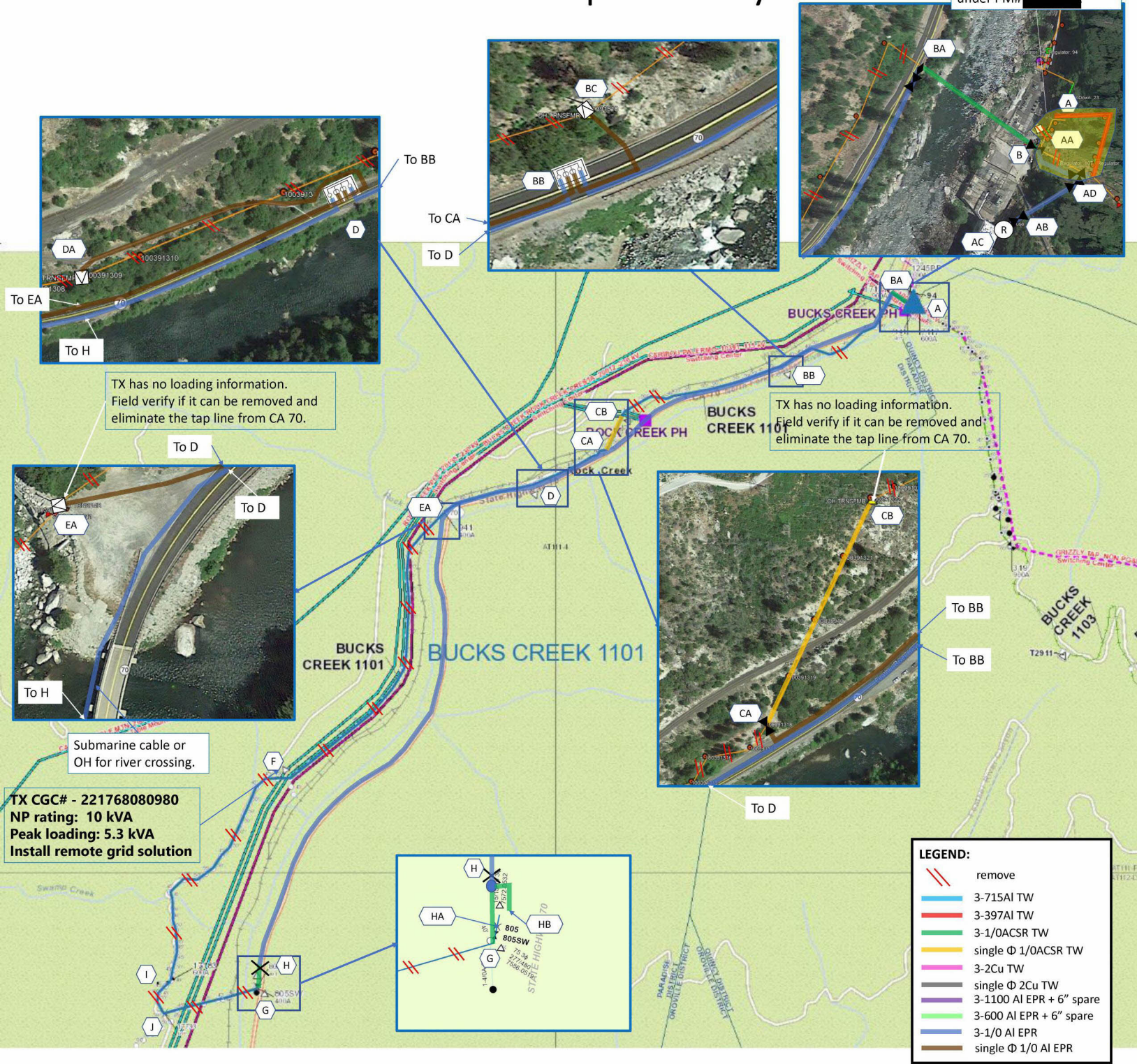
**LEGEND:**

- remove
- 3-715AI TW
- 3-397AI TW
- 3-1/0ACSR TW
- single  $\Phi$  1/0ACSR TW
- 3-2Cu TW
- single  $\Phi$  2Cu TW
- 3-1100 AI EPR + 6" spare
- 3-600 AI EPR + 6" spare
- 3-1/0 AI EPR
- single  $\Phi$  1/0 AI EPR

Internal

# Alternative 2 Scope – Key Sketch

Combine BC1101 with BC1103, to be completed under PM# [REDACTED]



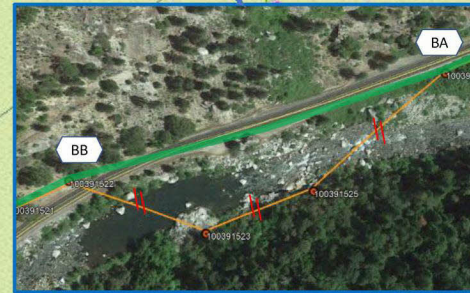
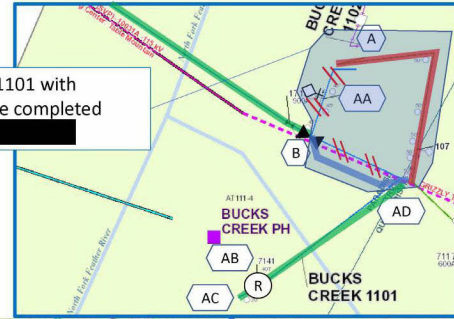
Internal

# Alternative 3 Scope – Key Sketch

TX has no loading information.  
Field verify if it can be removed and eliminate OH between Loc CA and Loc D.

TX has no loading information.  
Field verify if it can be removed and relocate the OH closer to CA 70.

Combine BC1101 with BC1103, to be completed under PM# [REDACTED]



**TX CGC# - 221768080980**  
NP rating: 10 kVA  
Peak loading: 5.3 kVA  
Install remote grid solution

**TX CGC# - 221757280532**  
NP rating: 15 kVA 3ph  
Peak loading: N/A

**TX CGC# - 221758680519**  
NP rating: 75 kVA  
Peak loading: 58 kVA

Install remote grid solution for Loc G & H

**LEGEND:**

	remove
	3-715AI TW
	3-397AI TW
	3-1/OACSR TW
	single $\Phi$ 1/OACSR TW
	3-2Cu TW
	single $\Phi$ 2Cu TW
	3-1100 AI EPR + 6" spare
	3-600 AI EPR + 6" spare
	3-1/O AI EPR
	single $\Phi$ 1/O AI EPR

Internal